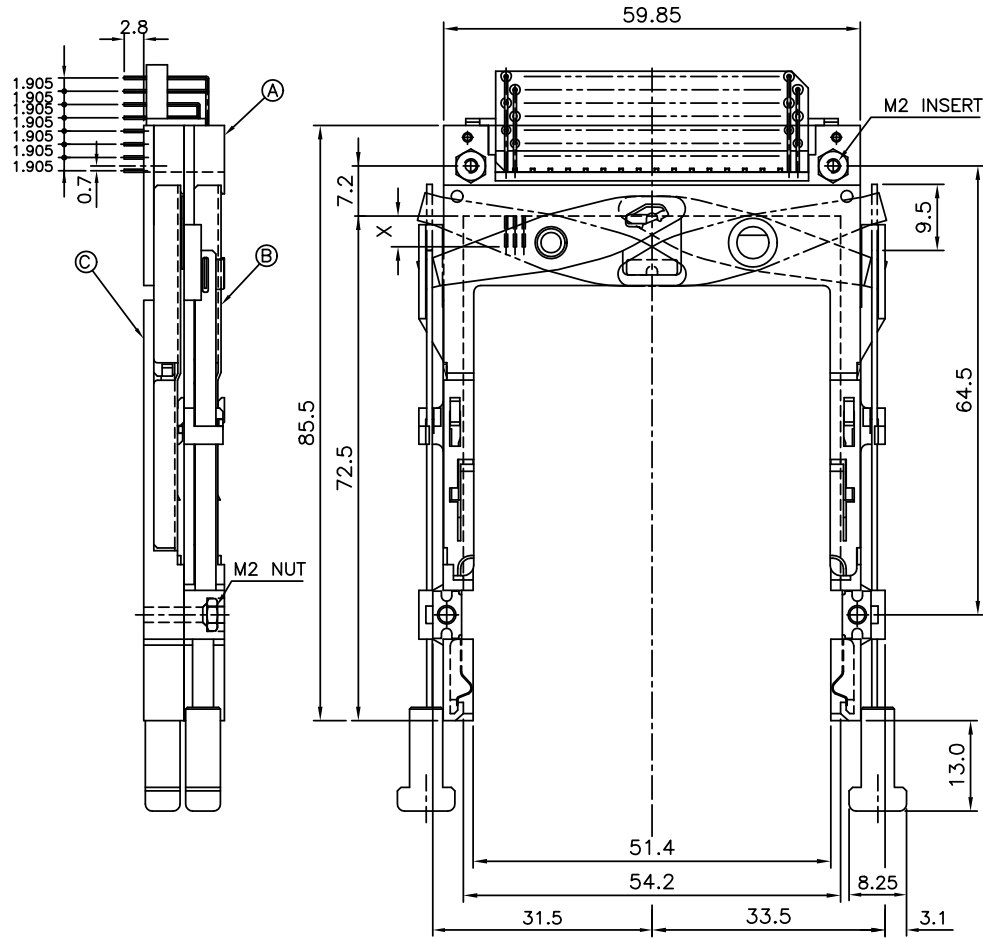


PRODUCT NO.
61572-100CA/100CALF

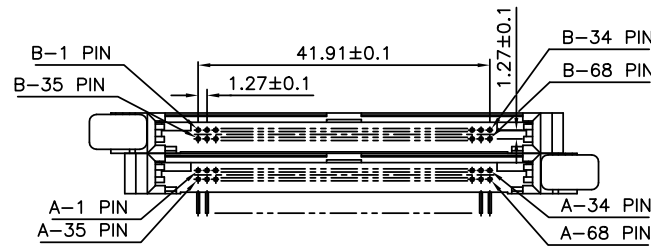
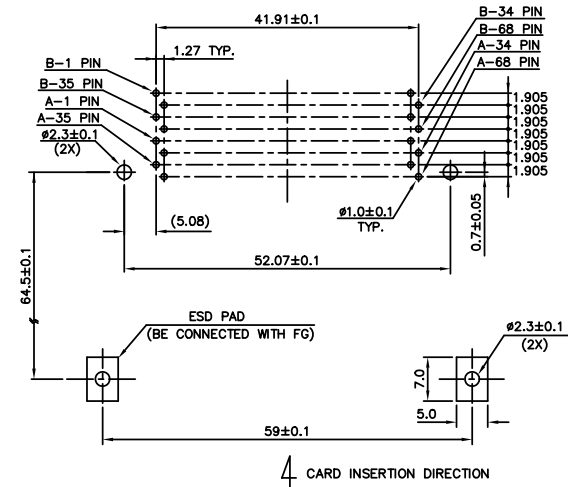


NOTES:

- EJECT FORCE : 3.5 Kg MAX.
- EJECT TRAVEL: 8.0mm
- MATERIAL
 - PART A (HEADER ASS'Y)
HOUSING :HIGH TEMPERATURE THERMOPLASTIC
PIN :COPPER ALLOY
 - PART B AND C (EJECT MECHANISM ASS'Y)
HOUSING : HIGH TEMPERATURE TERMOPLASTIC
PLATE :STAINLESS
EMI CONTACT:PHOSPHOR BRONZE
- FINISH (PIN)
 - UNDER PLATING :0.5µm MIN. Ni
 - CONTACT AREA :0.1µm MIN. GOLD OVER
 - SOLDER TAIL (TIN LEAD OPTION): 2.5µm MIN. Sn-Pb
 - SOLDER TAIL (LEAD FREE OPTION): 2.5µm MIN. PURE TIN

DIM"X"	4.25±0.1	3.5±0.1	5.0±0.1
PIN NUMBER	OTHERS	36,67	1,17,34,35,51,68

- IF LEAD FREE P/N.THE HOUSING WILL WITHSTAND EXPOSURE TO 260°C PEAK TEMPERATURE FOR 10 SECONDS IN A WAVE SOLDER APPLICATION WITH A 1.00MM MINIMUM THICK CIRCUIT BOARD.
- IF LEAD FREE P/N.THE PRODUCT MEETS EUROPEAN UNION DIRECTIVES AND OTHER COUNTRY REGULATIONS AS DISCRIBLED IN GS-22-008
- LEAD FREE P/N PACKAGING MEETS GS-14-920 SPECIFICATION



USE THE FOLLOWING P/N FOR OFFICIAL ORDERING

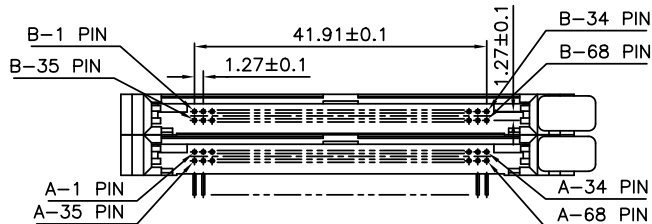
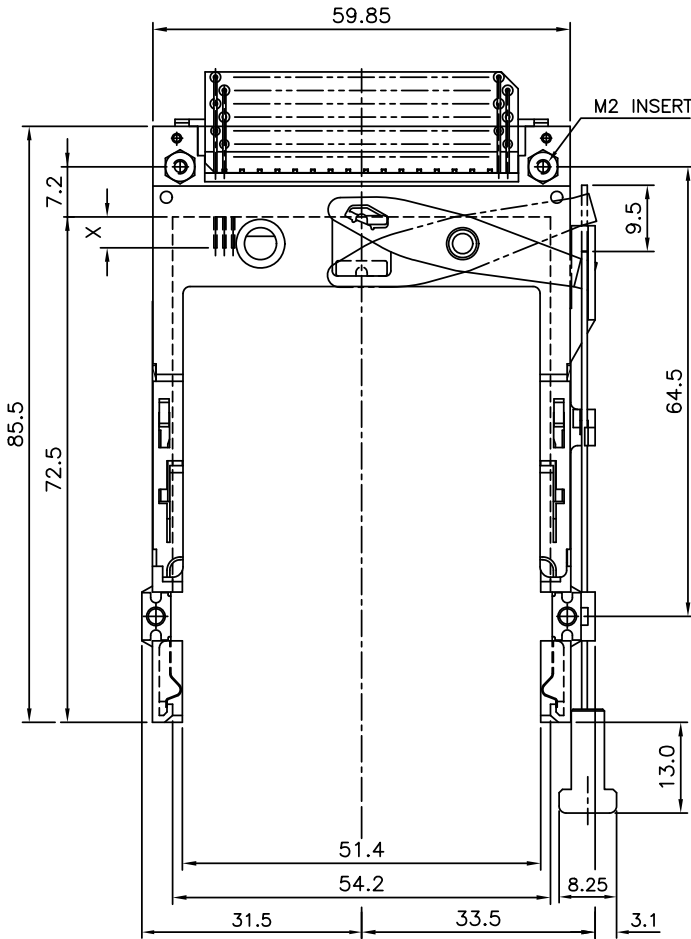
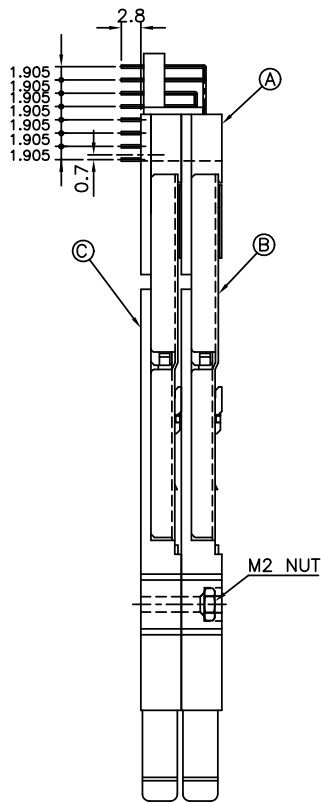
C	EJECT MECH ASS'Y	61571-00CA
B	EJECT MECH ASS'Y	95627-10CA
A	HDR ASS'Y	92821-000/000LF
	DESCRIPTION	P/N

mat'l. code		surface			tolerance			projection		product family		
		ISD1302			ISD 406 ISD1101			MM		PCMCIA		
l	tr	ec	n	odr	date	tolerances unless otherwise specified					title	
A	T60411	LS			08/30/96	angle	0.X±0.3			NARROW BODY FRONT EJECT		
B	T70019	WL			01/07/97	length	0.XX±0.15			TYPE 1/2/3 EJECTOR ASS'Y		
C	T90279	WL			07/23/99	σ±2'	0.XXX±0.05			scale	5:1	
D	N05-0059	WB			03/03/05	dr	SHIRLEY			08/30/96		
E	ELX-N-007943	ZK			11/01/11	engr	JOSEPH HSIA			08/30/96		
						chr	JOSEPH HSIA			08/30/96		
						appd	JENN TSAO			08/30/96		
sheet	revision	E	E	E								
index	sheet	1	2	3								



dwg no	sheet 1 of 3	size
61572		A4
type	Product Customer Drawing	

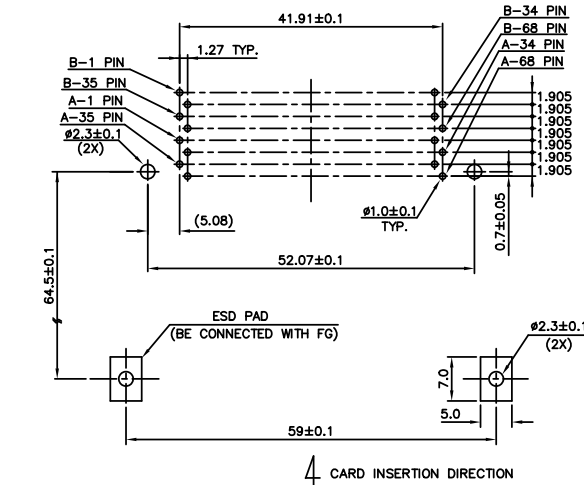
PRODUCT NO.
61572-200CA/200CALF



NOTES:

- EJECT FORCE : 3.5 Kg MAX.
- EJECT TRAVEL: 8.0mm
- MATERIAL
 - PART A (HEADER ASS'Y)
HOUSING : HIGH TEMPERATURE THERMOPLASTIC
PIN : COPPER ALLOY
 - PART B AND C (EJECT MECHANISM ASS'Y)
HOUSING : HIGH TEMPERATURE THERMOPLASTIC
PLATE : STAINLESS
EMI CONTACT: PHOSPHOR BRONZE
- FINISH (PIN)
UNDER PLATING : 0.5µm MIN. Ni
CONTACT AREA : 0.1µm MIN. GOLD OVER 0.5µm MIN. Pd-Ni
SOLDER TAIL (TIN LEAD OPTION): 2.5µm MIN. Sn-Pb
SOLDER TAIL (LEAD FREE OPTION): 2.5µm MIN. PURE TIN

DIM "X"	4.25±0.1	3.5±0.1	5.0±0.1
PIN NUMBER	OTHERS	36,67	1,17,34,35,51,68

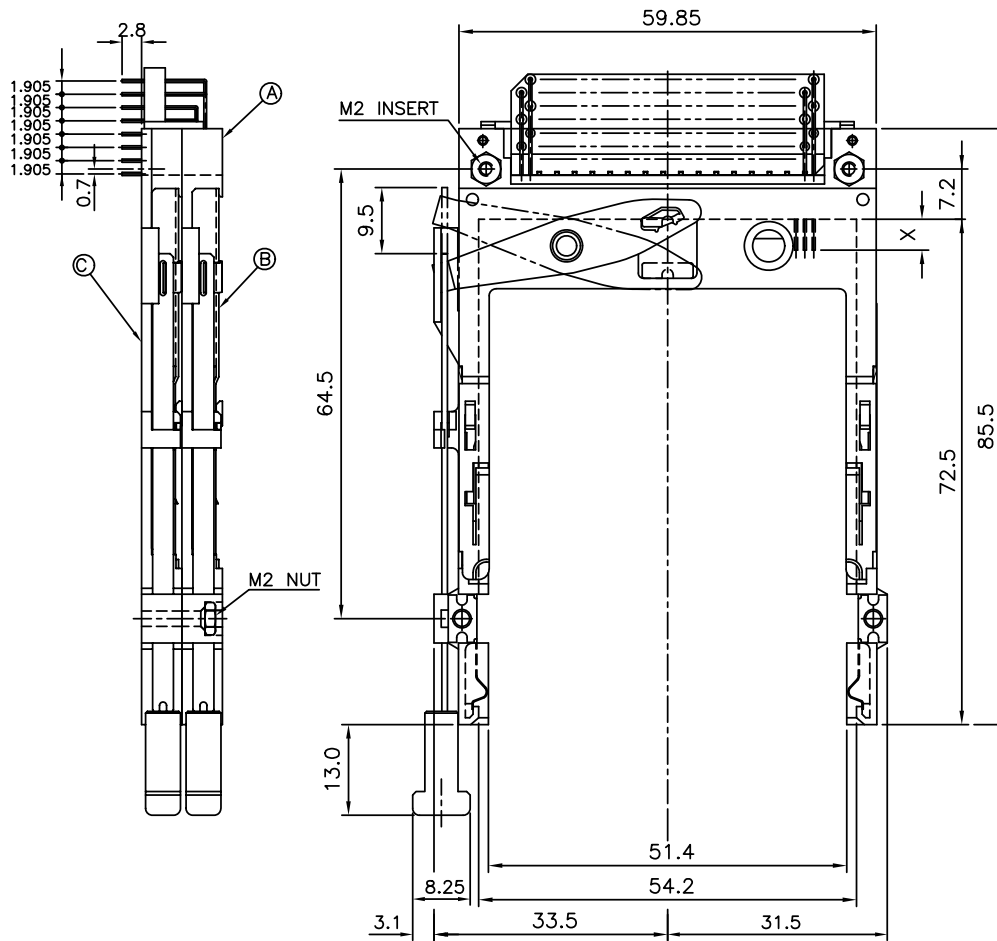


USE THE FOLLOWING P/N FOR OFFICIAL ORDERING

©	EJECT MECH ASS'Y	61571-00CA
ⓑ	EJECT MECH ASS'Y	95627-00CA
Ⓐ	HDR ASS'Y	92821-000/000LF
	DESCRIPTION	P/N

mat'l. code	surface ISO1302	tolerance ISO 406 ISO1101	projection MM	product family PCMCIA
ltr ecn nodr date	tolerances unless otherwise specified	angle 0°±2'	scale: 5:1	title NARROW BODY FRONT EJECT TYPE 1/2/3 EJECTOR ASS'Y
	dr SHIRLEY	08/30/96		dwg no 61572
	engr JOSEPH HSIA	08/30/96		sheet 2 of 3
	chr JOSEPH HSIA	08/30/96		size A4
	app JENN TSAO	08/30/96		type Product Customer Drawing
sheet index	revision sheet			

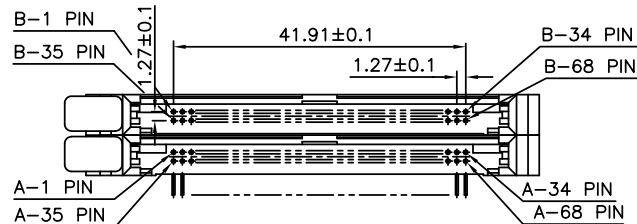
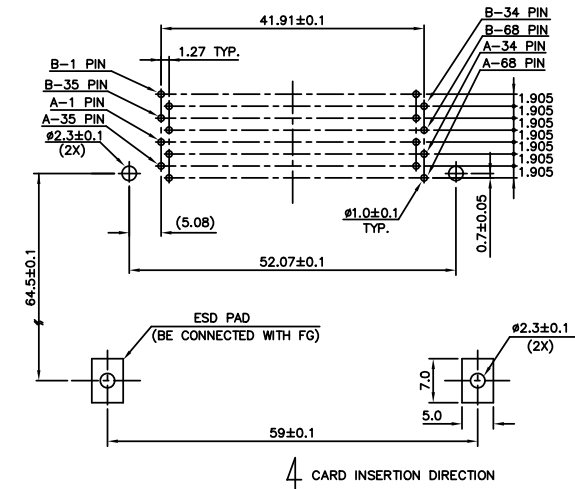
PRODUCT NO.
61572-300CA/300CALF



NOTES:

1. EJECT FORCE : 3.5 Kg MAX.
2. EJECT TRAVEL: 8.0mm
3. MATERIAL
 - 3.1 PART A (HEADER ASS'Y)
HOUSING: HIGH TEMPERATURE THERMOPLASTIC
PIN : COPPER ALLOY
 - 3.2 PART B AND C (EJECT MECHANISM ASS'Y)
HOUSING: HIGH TEMPERATURE THERMOPLASTIC
PLATE : STAINLESS
EMI CONTACT: PHOSPHOR BRONZE
4. FINISH (PIN)
UNDER PLATING : 0.5µm MIN. Ni
CONTACT AREA : 0.1µm MIN. GOLD OVER 0.5µm MIN. Pd-Ni
SOLDER TAIL (TIN LEAD OPTION): 2.5µm MIN. Sn-Pb
SOLDER TAIL (LEAD FREE OPTION): 2.5µm MIN. PURE TIN
5.

DIM"x"	4.25±0.1	3.5±0.1	5.0±0.1
PIN NUMBER	OTHERS	36,67	1,17,34,35,51,68
6. IF LEAD FREE P/N THE HOUSING WILL WITHSTAND EXPOSURE TO 260°C PEAK TEMPERATURE FOR 10 SECONDS IN A WAVE SOLDER APPLICATION WITH A 1.00MM MINIMUM THICK CIRCUIT BOARD.
7. IF LEAD FREE P/N THE PRODUCT MEETS EUROPEAN UNION DIRECTIVES AND OTHER COUNTRY REGULATIONS AS DISCRIBED IN GS-22-008
8. LEAD FREE P/N PACKAGING MEETS GS-14-920 SPECIFICATION



USE THE FOLLOWING P/N FOR OFFICIAL ORDERING

©	EJECT MECH ASS'Y	61571-10CA
ⓑ	EJECT MECH ASS'Y	95627-10CA
Ⓐ	HDR ASS'Y	92821-000/000LF
	DESCRIPTION	P/N

mat'l. code	surface ISO1302	tolerance ISO 406 ISO1101	projection MM	product family PCMCIA
ltr ecn nodr date	tolerances unless otherwise specified		scale: 5:1	
E	angle 0°±2'	0.X±0.3 0.XX±0.15 0.XXX±0.05		NARROW BODY FRONT EJECT TYPE 1/2/3 EJECTOR ASS'Y
	dr SHIRLEY	08/30/96		dwg no sheet 3 of 3 size
	engr JOSEPH HSIA	08/30/96		61572 A4
	chr JOSEPH HSIA	08/30/96		type Product Customer Drawing
	app'd JENN TSAO	08/30/96		
sheet index	revision sheet			