

DATA DISPLAY PRODUCTS (DDP) PROPRIETARY INFORMATION. DO NOT REPRODUCE, COPY, OR USE WITHOUT EXPRESS WRITTEN PERMISSION. COPYRIGHT DATA DISPLAY PRODUCTS.

REV.	DATE	BY	DESCRIPTION
A	011212	LC	INITIAL RELEASE

503255

## ELECTRO-OPTICAL CHARACTERISTICS

@ T<sub>a</sub> = 25°C

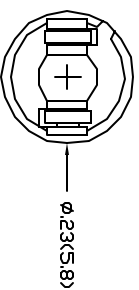
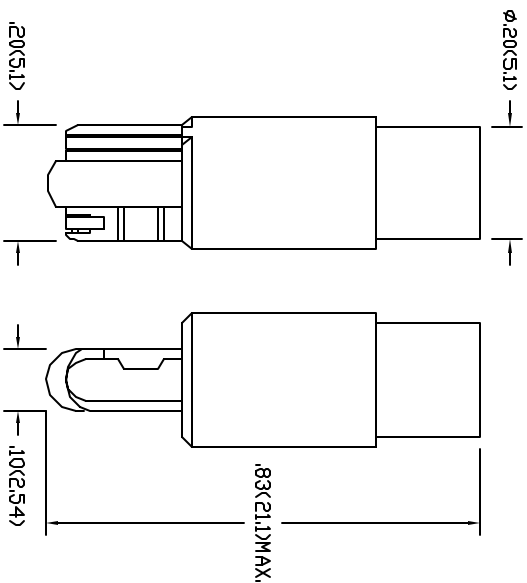
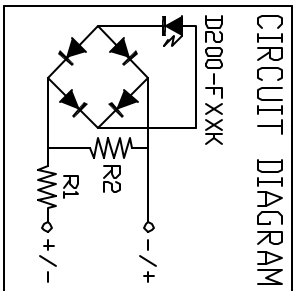
SYM	PARAMETER	X = LED COLOR					UNIT	
		RED	ORANGE	AMBER	GREEN	BLUE		WHITE
I <sub>v</sub>	TPP. LUMINOUS INTENSITY @ I <sub>f</sub> =20mA	300	450	325	300	125	270	mcd
V <sub>o</sub>	OPERATING VOLTAGE	28	28	28	28	28	28	V
I <sub>f</sub>	TPP. FORWARD CURRENT @ V <sub>f</sub> =2.8V	15.0~16.0					9.0~10.0	mA
I <sub>rx</sub>	MAX. FORWARD CURRENT @ V <sub>f</sub> =2.8V	17.5	17.5	17.5	11	11	11	mA
V <sub>br</sub>	REVERSE BREAKDOWN @ I <sub>r</sub> =100µA	-	-	-	-	-	-	V
λ <sub>pk</sub>	PEAK WAVELENGTH	635	609	592	520	465	-	nm
λ <sub>d</sub>	DOMINANT WAVELENGTH	625	605	590	525	470	-	nm

ABSOLUTE MAX. RATINGS T<sub>a</sub>=25°C

PARAMETER	VALUE			UNIT
	R, D & A	G, B & W	W	
POWER DISSIPATION	525	330		mW
DERATE/°C >T <sub>a</sub>	7.9	5		mW
OPERATING VOLTAGE	30	30		V
OPERATING TEMPERATURE	-40~+100	-30~+85		°C
STORAGE TEMPERATURE	-40~+120	-40~+100		°C

### REMARKS:

1. Dimensions are in inches(mm).
2. LED encapsulation is water-clear.
3. This device is immune to peak noise current of 3mA.
4. Caution: Gallium LEDs are class 1 ESD sensitive (MIL-STD-1686). Exceeding absolute maximum ratings may cause damage to, or possibly result in catastrophic failure of these devices. Use appropriate ESD precautions during handling and operation.
5. For 200-FW4K LED chromaticity coordinate range, see drawing #502590.



445 S. DOUGLAS ST., EL SEGUNDO, CA. 90245 (310)640-0442 FAX: (310)640-7639			
DATE:	011212	DWN BY:	LC
LAST REV. DATE:	-	REV LEVEL:	A
TITLE		MATERIAL:	
85LS-X1		-	
SCALE:	TOL:	ANG.	DWG NUMBER:
NONE	± .025(.63)	.010(.25)	503255