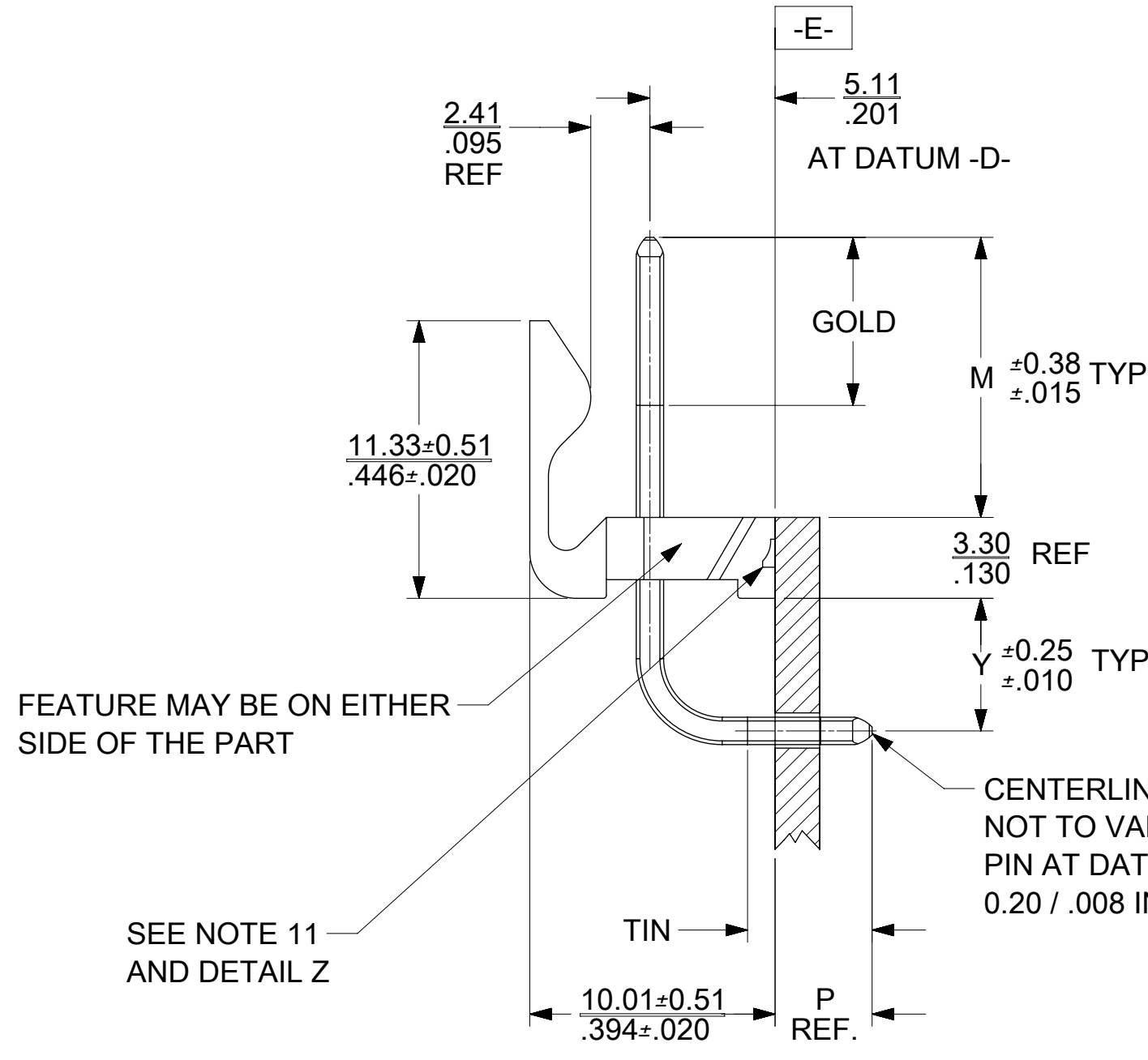


DETAIL Z
SCALE 8:1

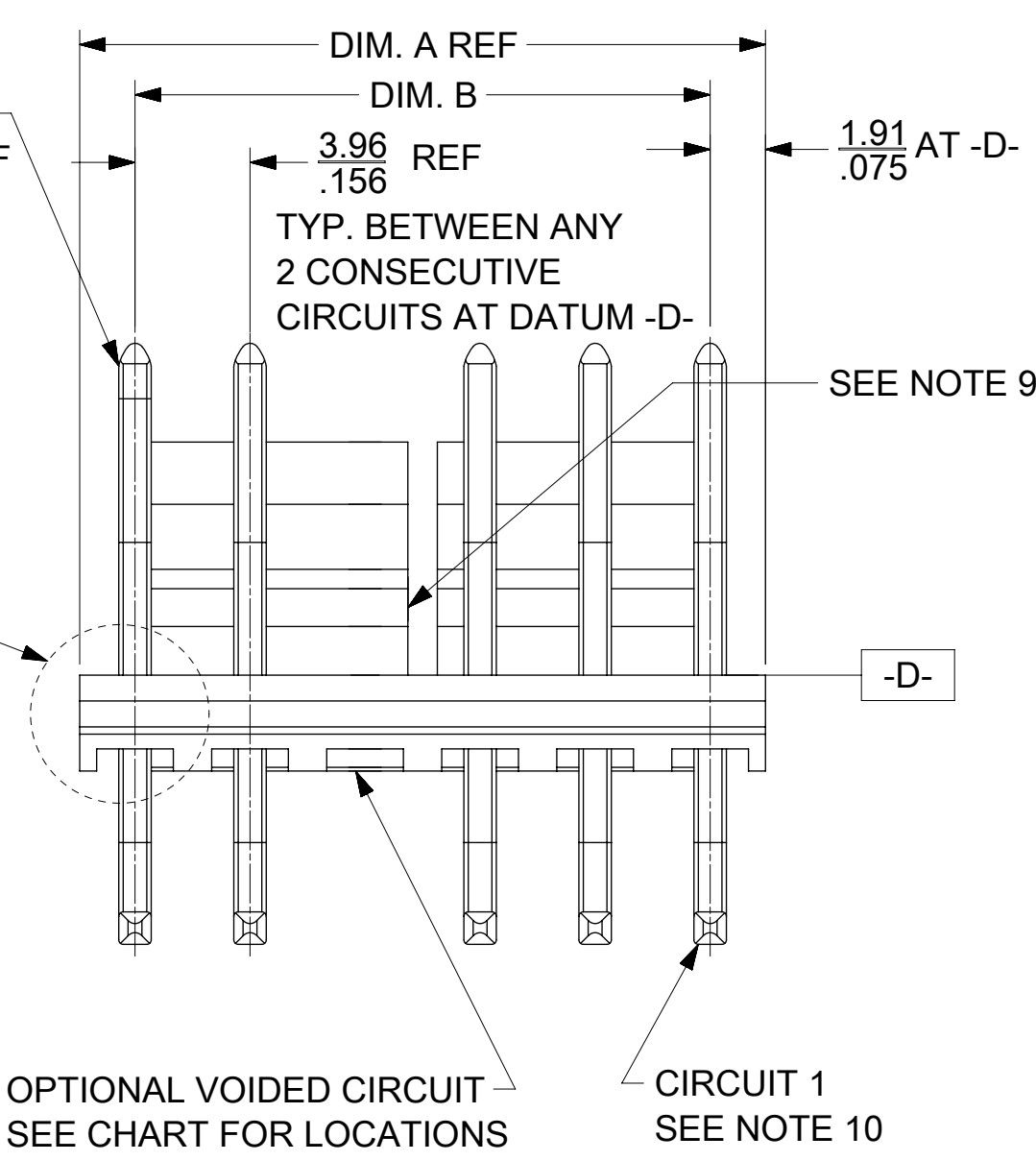


FEATURE MAY BE ON EITHER SIDE OF THE PART

SEE NOTE 11 AND DETAIL Z

CENTERLINE OF PIN AT TIP NOT TO VARY FROM CENTERLINE OF PIN AT DATUM -D- BY MORE THAN 0.20 / .008 IN ANY DIRECTION.

CENTERLINE OF PIN AT TIP NOT TO VARY FROM CENTERLINE OF PIN AT DATUM -E- BY MORE THAN 0.20 / .008 IN ANY DIRECTION.

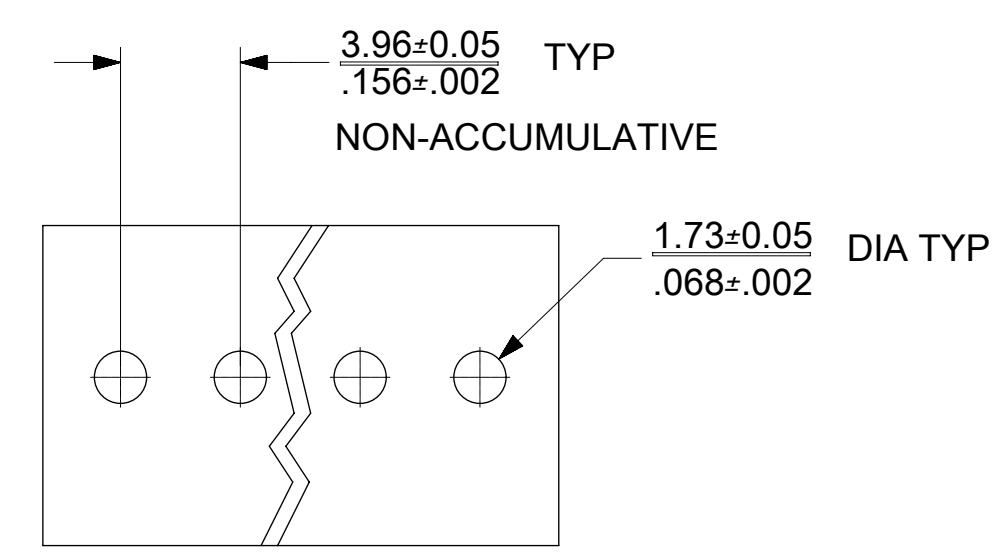


SEE DETAIL Z
SEE NOTE 11

OPTIONAL VOIDED CIRCUIT
SEE CHART FOR LOCATIONS

CIRCUIT 1
SEE NOTE 10

- NOTES:
- MATERIAL: HOUSING: NYLON, UL94V-1, COLOR: BLACK
PINS: BRASS
 - FINISH: (197) = OVERALL REFLOWED MATTE TIN: 0.00152/.000060 MIN. OVER 0.00127/.000050 MIN. NICKEL OVERALL.
(208) = SELECT GOLD: 0.00038/.000015 MIN, SELECT MATTE TIN: 0.00254/.000100 MIN, BOTH OVER 0.00127/.000050 MIN NICKEL.
(228) = SELECT GOLD: 0.00076/.000030 MIN, SELECT MATTE TIN: 0.00254/.000100 MIN, BOTH OVER 0.00127/.000050 MIN NICKEL.
 - PRODUCT SPECIFICATION: PS-171813-0001, PS-171813-0002
 - PACKAGING INFORMATION: SEE CHART
 - SOLDERABILITY: PER SMES-152.
 - PIN PUSH-OUT FORCE: PRIOR TO SOLDERING, A 3 LB. MINIMUM FORCE IN EITHER DIRECTION
 - PARTS ARE STACKABLE END TO END ON 3.96/.156 CENTERS.
 - THIS PART CONFORMS TO CLASS B REQUIREMENTS OF COSMETIC SPECIFICATION PS-45499-002.
 - SLOTS ON BACKWALL ARE BETWEEN CIRCUITS. SEE CHART FOR LOCATION.
 - CIRCUIT 1 DESIGNATION IS USED TO DEFINE VOID LOCATION. CIRCUIT 1 MAY OR MAY NOT LINE UP WITH CIRCUIT 1 ON THE MATING HOUSING.
 - FEATURE MAY OR MAY NOT EXTEND ACROSS THE ENTIRE FACE OF THE PART. SEE DETAIL Z.
 - THE PARTS LISTED ON THIS DRAWING ARE CONSTRUCTED TO MEET THE REQUIREMENT FOR DIRECT SUPPORT OF UNINSULATED LIVE PARTS AS DESCRIBED IN UL508C.



PCB LAYOUT: COMPONENT SIDE

CIRCUIT SIZE	DIM. A	DIM. B	SLOT LOCATION BETWEEN CIRCUITS
2	7.77 .306	3.96±0.05 .156±.002	NONE
3	11.73 .462	7.92±0.10 .312±.004	NONE
4	15.70 .618	11.89±0.15 .468±.006	NONE
5	19.66 .774	15.85±0.15 .624±.006	NONE
6	23.62 .930	19.81±0.18 .780±.007	3 & 4
7	27.58 1.086	23.77±0.18 .936±.007	4 & 5
8	31.55 1.242	27.74±0.20 1.092±.008	4 & 5
9	35.51 1.398	31.70±0.20 1.248±.008	5 & 6
10	39.47 1.554	35.66±0.23 1.404±.009	5 & 6
11	43.43 1.710	39.62±0.23 1.560±.009	6 & 7
12	47.40 1.866	43.59±0.25 1.716±.010	4 & 5 8 & 9

THIS DRAWING CONTAINS INFORMATION THAT IS PROPRIETARY TO MOLEX ELECTRONIC TECHNOLOGIES, LLC AND SHOULD NOT BE USED WITHOUT WRITTEN PERMISSION

QUALITY SYMBOLS ▽ = 0 ▽ = 0 ▽ = 0 ▽ = 0 ▽ = 0 ▽ = 0 ▽ = 0 ▽ = 0 ▽ = 0 ▽ = 0	ADD NOTE 12	EC NO: 113073 DRWN: BAPPELDORN CHKD: JBELL REV APPR: FSMITH	GENERAL TOLERANCES (UNLESS SPECIFIED)		DIMENSION UNITS	SCALE			
			MM	INCH	MM/IN	4:1			
			4 PLACES ± ±		DRWN BY	DATE			
			3 PLACES ± ± 0.01		MKIPPER	2012/09/14			
		2 PLACES ± 0.25 ± 0.015		CHK'D BY	DATE	KK RPC .156 HEADER ASS'Y FRICTION LOCK RIGHT ANGLE W/O PEGS			
		1 PLACES ± 0.38 ±		SSOUSEK	2012/09/14				
		0 PLACES ± ±		APPR BY	DATE				
				FSMITH	2013/06/11				
			ANGULAR TOL = 0.5	DRAWING SIZE	THIRD ANGLE PROJECTION	PRODUCT CUSTOMER DRAWING			
			DRAFT WHERE APPLICABLE MUST REMAIN WITHIN DIMENSIONS	C		SERIES	MATERIAL NUMBER	CUSTOMER	
						171814	SEE CHART	GENERAL MARKET	
						DOCUMENT NUMBER	DOC TYPE	DOC PART	SHEET NUMBER
						SD-171814-0001	PSD	000	1 OF *

OPTIONS	Group	171814-0002/0012	Group	171814-1002/1012	Group	171814-2002/2012
	Plating:	197 – TIN	Plating:	208 – 15 GOLD	Plating:	228 – 30 GOLD
	Mating M	11.33 / .446	Mating M	11.33 / .446	Mating M	11.33 / .446
	Gold Loc G	N/A	Gold Loc G	6.85 / .270	Gold Loc G	6.85 / .270
	Height Y	5.41 / .213	Height Y	5.41 / .213	Height Y	5.41 / .213
	PC Tail P	2.54/ .100	PC Tail P	2.54/ .100	PC Tail P	2.54/ .100
	Tin Loc T	OVERALL	Tin Loc T	5.08 / .200	Tin Loc T	5.08 / .200
	Voided Ckts	NONE	Voided Ckts	NONE	Voided Ckts	NONE
	Pack Per	PK-41792-002 BULK	Pack Per	PK-41792-002 BULK	Pack Per	PK-41792-002 BULK
Ckts	Material No		Material No		Material No	
2	171814-0002		171814-1002		171814-2002	
3	171814-0003		171814-1003		171814-2003	
4	171814-0004		171814-1004		171814-2004	
5	171814-0005		171814-1005		171814-2005	
6	171814-0006		171814-1006		171814-2006	
7	171814-0007		171814-1007		171814-2007	
8	171814-0008		171814-1008		171814-2008	
9	171814-0009		171814-1009		171814-2009	
10	171814-0010		171814-1010		171814-2010	
11	171814-0011		171814-1011		171814-2011	
12	171814-0012		171814-1012		171814-2012	

REV: A5	<u>ECR/ECN INFORMATION:</u> EC No.: DATE: 11/19/2020	<u>TITLE:</u> KK RPC 156 HEADER ASSEMBLY FRICTION LOCK RIGHT ANGLE W/O PEGS	<u>SHEET No.</u> - 2 -
<u>DOCUMENT NUMBER:</u> SD-171814-0001		<u>CREATED / REVISED BY:</u> SS06	<u>CHECKED BY:</u> YVENKATESWAR
		<u>APPROVED BY:</u> ISHWARG	

OPTIONS	Group	171814-0102/0112	Group	171814-1104	Group	
	Plating:	197 – TIN	Plating:	208 – 15 GOLD	Plating:	
	Mating M	11.43 / .450	Mating M	11.43 / .450	Mating M	
	Gold Loc G	N/A	Gold Loc G	6.85 / .270	Gold Loc G	
	Height Y	5.41 / .213	Height Y	5.41 / .213	Height Y	
	PC Tail P	3.96/ .156	PC Tail P	3.96/ .156	PC Tail P	
	Tin Loc T	OVERALL	Tin Loc T	5.08 / .200	Tin Loc T	
	Voided Ckts	NONE	Voided Ckts	NONE	Voided Ckts	
	Pack Per	PK-41792-002 BULK	Pack Per	PK-41792-002 BULK	Pack Per	
Ckts	Material No		Material No		Material No	
2	171814-0102					
3	171814-0103					
4	171814-0104		171814-1104			
5	171814-0105					
6	171814-0106					
7	171814-0107					
8	171814-0108					
9	171814-0109					
10	171814-0110					
11	171814-0111					
12	171814-0112					

REV: A5	<u>ECR/ECN INFORMATION:</u> EC No.: DATE: 11/19/2020	<u>TITLE:</u> KK RPC 156 HEADER ASSEMBLY FRICTION LOCK RIGHT ANGLE W/O PEGS	<u>SHEET No.</u> - 3 -
<u>DOCUMENT NUMBER:</u> SD-171814-0001	<u>CREATED / REVISED BY:</u> SS06	<u>CHECKED BY:</u> YVENKATESWAR	<u>APPROVED BY:</u> ISHWARG

OPTIONS	Group	171814-3002/3012	Group	171814-4002/4012	Group	
	Plating:	197 – TIN	Plating:	208 – 15 GOLD	Plating:	
	Mating M	11.33 / .446	Mating M	11.33 / .446	Mating M	
	Gold Loc G	N/A	Gold Loc G	6.85 / .270	Gold Loc G	
	Height Y	5.41 / .213	Height Y	5.41 / .213	Height Y	
	PC Tail P	2.54/ .100	PC Tail P	2.54/ .100	PC Tail P	
	Tin Loc T	OVERALL	Tin Loc T	5.08 / .200	Tin Loc T	
	Voided Ckts	NONE	Voided Ckts	NONE	Voided Ckts	
	Pack Per	PK-171814-0001 TAPE AND REEL	Pack Per	PK-171814-0001 TAPE AND REEL	Pack Per	
Ckts	Material No		Material No		Material No	
2	171814-3002		171814-4002			
3	171814-3003		171814-4003			
4	171814-3004		171814-4004			
5	171814-3005		171814-4005			
6	171814-3006		171814-4006			
7	171814-3007		171814-4007			
8	171814-3008		171814-4008			
9	171814-3009		171814-4009			
10	171814-3010		171814-4010			
11	171814-3011		171814-4011			
12	171814-3012		171814-4012			

REV: A5	<u>ECR/ECN INFORMATION:</u> EC No.: DATE: 11/19/2020	<u>TITLE:</u> KK RPC 156 HEADER ASSEMBLY FRICTION LOCK RIGHT ANGLE W/O PEGS	<u>SHEET No.</u> - 4 -
<u>DOCUMENT NUMBER:</u> SD-171814-0001		<u>CREATED / REVISED BY:</u> SS06	<u>CHECKED BY:</u> YVENKATESWAR
		<u>APPROVED BY:</u> ISHWARG	

OPTIONS	Group	171814-9999	Group	171814-7002/7012	Group	171814-7105
	Plating:	197 – TIN	Plating:	228 – 30 GOLD	Plating:	228 – 30 GOLD
	Mating M	11.43 / .450	Mating M	11.43 / .450	Mating M	11.43 / .450
	Gold Loc G	N/A	Gold Loc G	6.85 / .270	Gold Loc G	6.85 / .270
	Height Y	5.41 / .213	Height Y	5.41 / .213	Height Y	5.41 / .213
	PC Tail P	3.96/ .156	PC Tail P	3.96/ .156	PC Tail P	3.96/ .156
	Tin Loc T	OVERALL	Tin Loc T	5.08 / .200	Tin Loc T	5.08 / .200
	Voided Ckts	3, 5, 7	Voided Ckts	NONE	Voided Ckts	2,4
	Pack Per	PK-41792-002 BULK	Pack Per	PK-41792-002 BULK	Pack Per	PK-41792-002 BULK
Ckts	Material No		Material No		Material No	
2						
3						
4			171814-7004			
5					171814-7105	
6						
7	171814-9999					
8						
9			171814-7009			
10						
11						
12						

REV: A5	ECR/ECN INFORMATION: EC No.: DATE: 11/19/2020	TITLE: KK RPC 156 HEADER ASSEMBLY FRICTION LOCK RIGHT ANGLE W/O PEGS	SHEET No. - 5 -
DOCUMENT NUMBER: SD-171814-0001	CREATED / REVISED BY: SS06	CHECKED BY: YVENKATESWAR	APPROVED BY: ISHWARG

OPTIONS	Group	171814-9998
	Plating:	197 – TIN
	Mating M	11.33 / .446
	Gold Loc G	N/A
	Height Y	5.41 / .213
	PC Tail P	2.54/ .100
	Tin Loc T	OVERALL
	Voided Ckts	2
	Pack Per	PK-41792-002 BULK
Ckts	Material No	
2		
3	171814-9998	
4		
5		
6		
7		
8		
9		
10		
11		
12		

REV:	<u>ECR/ECN INFORMATION:</u>	<u>TITLE:</u>	<u>SHEET No.</u>
A5	EC No.:	KK RPC 156 HEADER ASSEMBLY FRICTION LOCK RIGHT ANGLE W/O PEGS	- 6 -
	DATE: 11/19/2020		
<u>DOCUMENT NUMBER:</u>	<u>CREATED / REVISED BY:</u>	<u>CHECKED BY:</u>	<u>APPROVED BY:</u>
SD-171814-0001	SS06	YVENKATESWAR	ISHWARG