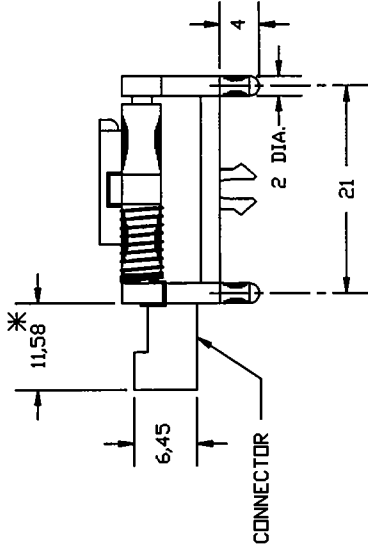
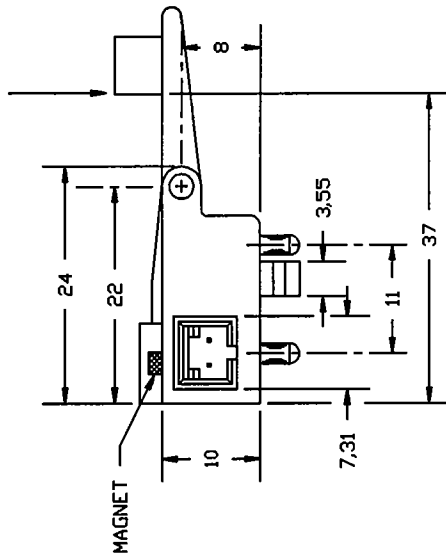


ACTUATION FORCE 4 GRAMS NOMINAL



MATERIAL BASE NYLON 6/6 W/15% GLASS FIBRE (BLACK)
 ARM NYLON 6/6 W/30% GLASS FIBRE (BLACK)
 CONNECTOR: 94V-0 POLYESTER W/30% GLASS FIBRE (BLACK)

OPERATING PARAMETERS

- 1.) OFF POINT: LESS THAN 15° ROTATION FROM REST POSITION
- 2.) ON POINT: GREATER THAN 2° ROTATION FROM REST POSITION

CONTACT RATINGS

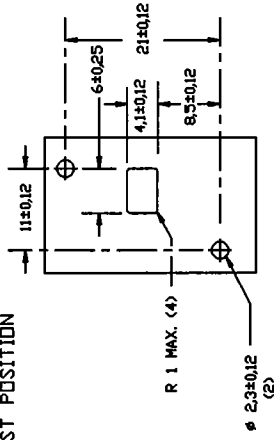
- CONTACT CAPACITY= 10 WATTS MAX.
- SWITCHING VOLTAGE= 200 Vdc MAX.
- SWITCHING CURRENT= .500 Adc MAX.
- CONTACT RESISTANCE= .200 OHM MAX.

CONNECTOR PINS .025 IN², GOLD PLATED PHOSPHOR BRONZE

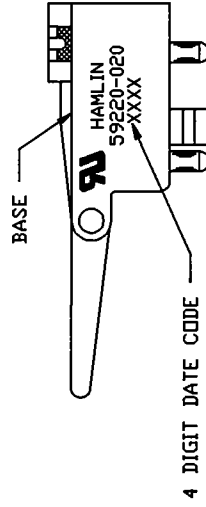
* KEY DIMENSIONS

ALL DIMENSIONS IN MM

TOLERANCES: ±0.25 UNLESS OTHERWISE SPECIFIED



MATERIAL TO BE 1.6±0.21 THICK
 SWITCH MOUNTING HOLE PATTERN



SWITCH ASSEMBLY

H A M L I N, I n c .

DCR No. 4008

AC	REVISE PACKAGING, REFORMAT	A3903	JC	7/30/96	JC	7/30/96	Dwn.	DATE	D10-59220-020
----	----------------------------	-------	----	---------	----	---------	------	------	---------------

REV.	DESCRIPTION OF REVISION	DCR No.	BY	DATE	APP.	DATE	App'd	RLB	DATE	Page 1 of 1
------	-------------------------	---------	----	------	------	------	-------	-----	------	-------------