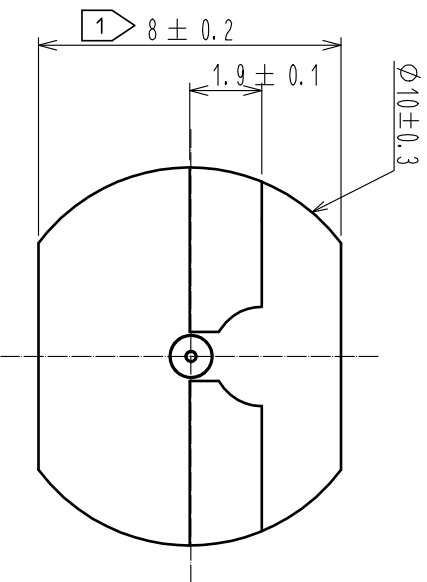
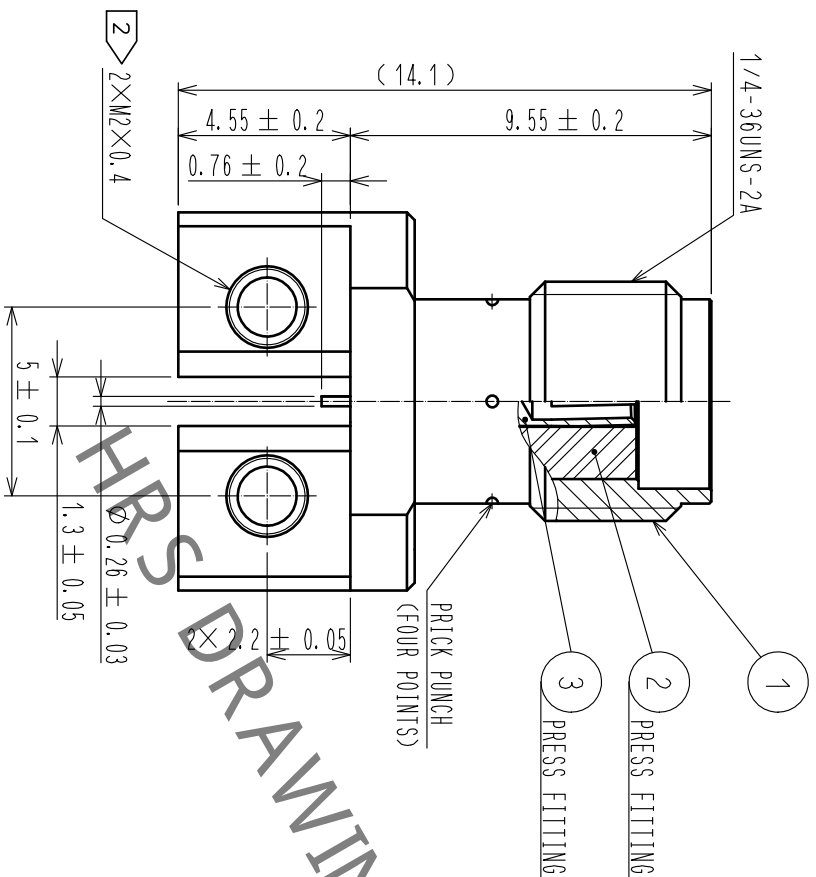
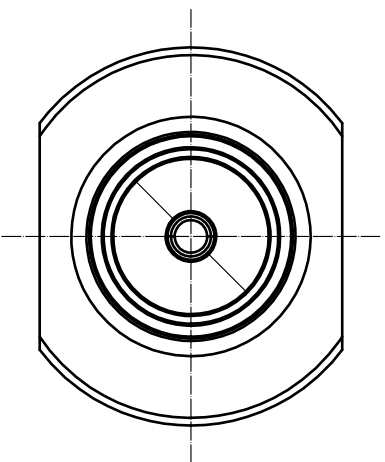


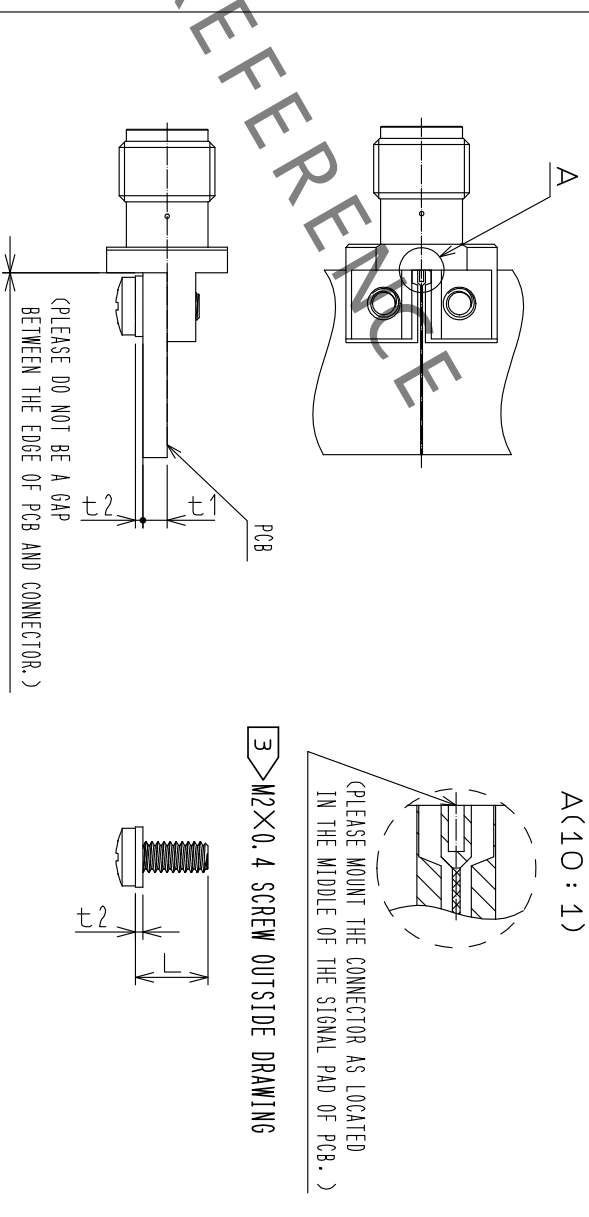
Metric screw thread type



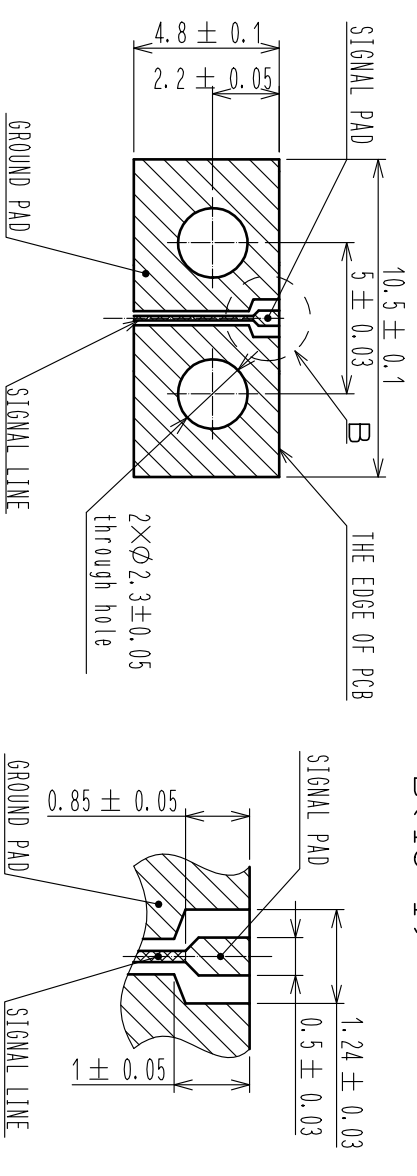
- NOTES
- 1 WHEN THE MATING CONNECTOR, PLEASE HOLD MILLING AREA OF  $8 \pm 0.2$  WITH A WRENCH.
  - 2  $M2 \times 0.4$  SCREW TIGHTENING TORQUE IS  $0.18 \text{ N} \cdot \text{m}$   
PLEASE TIGHTEN THE SCREWS EVENLY WHEN MOUNTING THE CONNECTORS TO ENSURE STABLE ELECTRICAL CONTACT.
  - 3 PLEASE USE A PCB MOUNTING SCREW OF THE LENGTH OF  $L(\text{mm})$ .  
THE LENGTH OF  $L(\text{mm})$  IS  $\text{PCB THICKNESS } t1(\text{mm}) + \text{SPRING WASHER THICKNESS } t2(\text{mm}) + 2(\text{mm})$ .  
PLEASE USE A SCREW WITH SPRING WASHER.
  - 4 THIS CONNECTOR SHOULD BE USE FOR TEST PORT ONLY.

MOUNTING OF CONNECTOR

- (1) WHEN THE CONNECTOR IS MOUNTED ON PCB, PLEASE DO NOT BE A GAP BETWEEN THE EDGE OF PCB AND CONNECTOR.
- (2) PLEASE MOUNT THE CONNECTOR AS LOCATED IN THE MIDDLE OF THE SIGNAL PAD OF PCB.
- (3) SOLDERING CONDITIONS:  
FOR THE MANUAL SOLDERING, SOLDERING IRON BIT TEMPERATURE IS  $380 \pm \text{C MAX.}$  FOR 5 SECONDS MAX.



RECOMMENDED PC BOARD PATTERN DRAWING(4 : 1)



ROHS COMPLIANT

2	PTFE	GOLD PLATING	3	BERYLLIUM COPPER	GOLD PLATING
1	BRASS				
NO.	MATERIAL	FINISH . REMARKS	NO.	MATERIAL	FINISH . REMARKS
UNITS	SCALE	COUNT	DESCRIPTION OF REVISIONS	DESIGNED	CHECKED
mm	5 : 1	2	DIS-D-00003461	RO. YOKOYAMA	TO. KATAYAMA
	APPROVED : KY. SHIMIZU		15.01.17	EDC-339102-00-00	
	CHECKED : KY. SHIMIZU		15.01.17	HRM(G)-300-467B-2	
	DESIGNED : RO. YOKOYAMA		15.01.17	CL323-0923-5-00	
	DRAWN : RO. YOKOYAMA		15.01.17		