

4

3

2

1

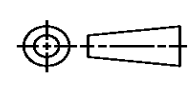
THIS DRAWING IS UNPUBLISHED. RELEASED FOR PUBLICATION
 © COPYRIGHT ALL RIGHTS RESERVED.

| LOC | DIST | REVISIONS | | | |
|-----|------|---------------|-----------|-----|------|
| P | LTR | DESCRIPTION | DATE | DWN | APVD |
| | B1 | ECR-16-009824 | 27JUL2016 | GK | SD |
| | | | | | |
| | | | | | |

REPLACED BY OCEAN STYLE APPLICATOR PART NUMBER 2150653-1

FOR REPLACEMENT PARTS FOR APPLICATOR 1385686
 REFER TO ADDITIONAL PAGE(S). SPARE PARTS KIT (IF LISTED)
 WILL REMAIN AVAILABLE.

THE REPLACEMENT OCEAN STYLE APPLICATOR HAS THE
 SAME TERMINATOR/PRESS INTERFACE AS APPLICATOR
 1385686

| | | | | | |
|---|--|---|------------------|-------------------------|---------------------|
| THIS DRAWING IS A CONTROLLED DOCUMENT. | | DWN | GOPALAKRISHNA HV | | |
| DIMENSIONS: | | CHK | GOPALAKRISHNA HV | | |
|  | | TOLERANCES UNLESS OTHERWISE SPECIFIED: | | APVD | |
| | | 0 PLC ± 1 PLC ± 2 PLC ± 3 PLC ± 4 PLC ± ANGLES ± | | STOUGH DALE | |
| MATERIAL | | PRODUCT SPEC | | NAME | |
| FINISH | | APPLICATION SPEC | | END FEED HDM APPLICATOR | |
| | | WEIGHT | SIZE | CAGE CODE | DRAWING NO |
| | | | A3 | | ©- 1385686 |
| | | CUSTOMER DRAWING | | SCALE | SHEET 1 OF 2 REV B1 |

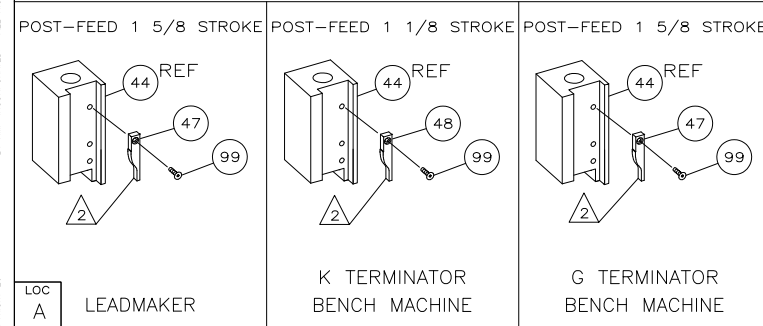
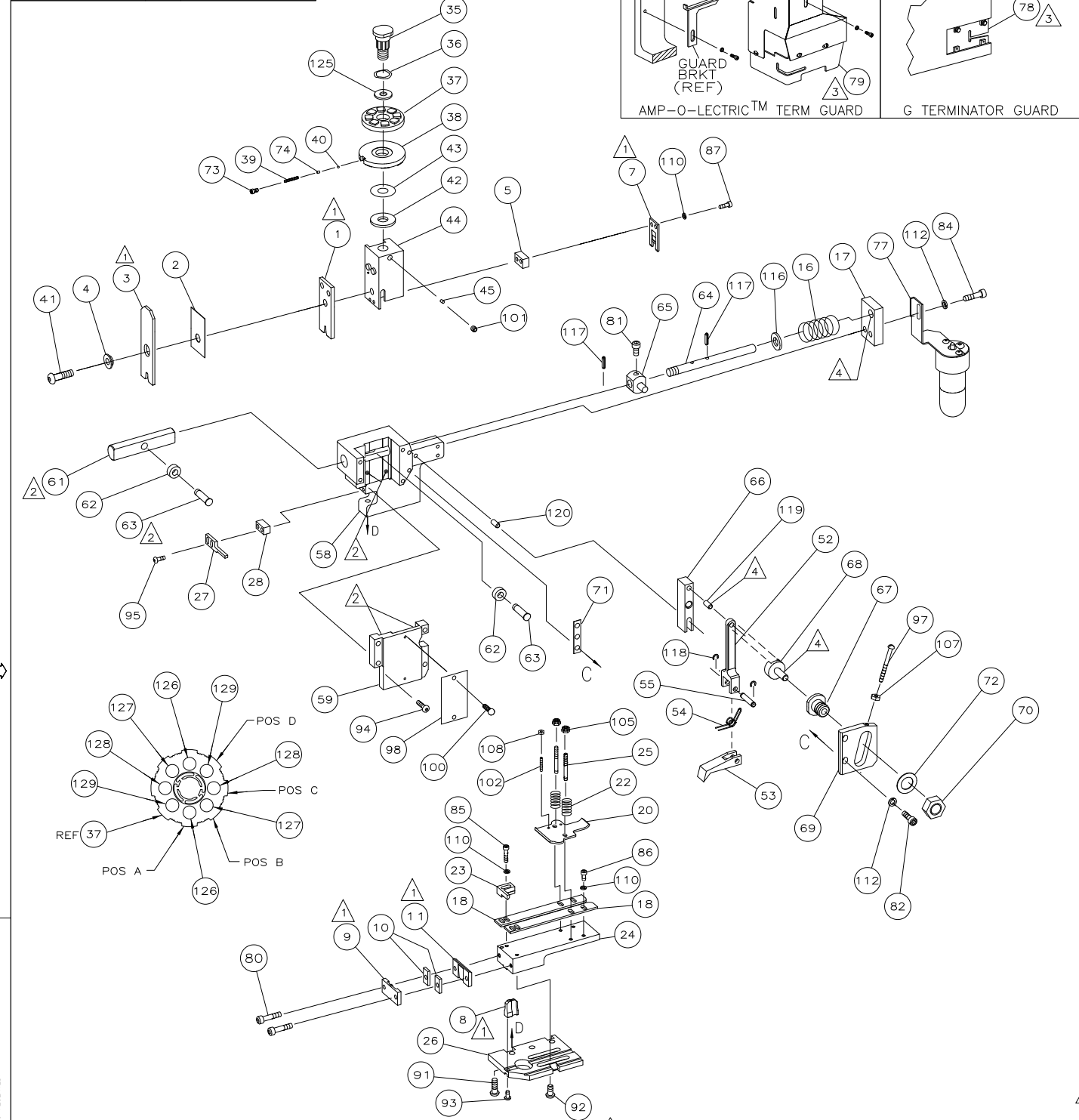


DRAWING MADE IN THIRD ANGLE PROJECTION

1385686 1385686

/home/us014442/dm.tcmold

| PART NUMBER | REV | FIRST USED |
|-------------|-----|------------|
| 1385686-1 | B | 122500-1 |
| 1385686-2 | B | 565435-5 |



- 1 RECOMMENDED SPARE PARTS.
- 2 GREASE LIGHTLY.
- 3 GUARD MUST BE IN PLACE WHEN OPERATING APPLICATOR IN A BENCH MACHINE.
- 4 LUBRICATE DAILY USING NO. 20 MACHINE OIL.
- 5. ITEMS WITH QTY OF REF SPECIFIED (EXCEPT ITEMS 78 AND 79) ARE USED ON ITEM 32.
- 6. ITEM 78 USED WITH G TERMINATOR ONLY.

LOC A LEADMAKER
 DIST 66
 K TERMINATOR BENCH MACHINE
 G TERMINATOR BENCH MACHINE

| TERMINAL NAME: RING TONGUE | | | |
|----------------------------|---------------------------|------------------|--------------------|
| 1217996 | | | |
| PAD LTR | CRIMP HEIGHT | WIRE SIZE | |
| A | .098 ±.002 [2.49 ±0.05mm] | 12 | |
| B | .093 ±.002 [2.36 ±0.05mm] | (2)16 | |
| C | .088 ±.002 [2.24 ±0.05mm] | 14 | |
| D | .081 ±.002 [2.06 ±0.05mm] | 16 | |
| CRIMP WIRE | SIZE | TYPE | RANGE |
| .140 | [3.56mm] | F | 16-12 |
| .220 | [5.59mm] | 0 | .130-.170 |
| INSUL | FEED | APPL INSTRUCTION | SET UP GAGE LAYOUT |
| .203-.234 | 114-2084 | 408-8039 | 458638-1 L2907 |

| QTY | REF | U/M | DWG SIZE | PART NO | DESCRIPTION | ITEM NO |
|-----|-----|-----|----------|------------|--------------------------------|---------|
| 2 | 2 | - | C | 6-354778-9 | PIN, WIRE DISC (.2840)D | 129 |
| 2 | 2 | - | C | 5-354778-3 | PIN, WIRE DISC (.2760)C | 128 |
| 2 | 2 | - | C | 4-354778-3 | PIN, WIRE DISC (.2710)B | 127 |
| 2 | 2 | - | C | 3-354778-1 | PIN, WIRE DISC (.2650)A | 126 |
| 1 | 1 | - | A | 986950-1 | WASHER, FLAT PRECISION | 125 |
| 1 | 1 | - | A | 217238-1 | GENERAL INSTRUCTION PACKAGE | 124 |
| 1 | 1 | - | - | 4088039 | EF APPL INST 408-8039 | 123 |
| | | | | | | 122 |
| | | | | | | 121 |
| REF | REF | - | A | 1-21030-7 | PIN,DOWEL(Ø.187x1.50)HSG | 120 |
| REF | REF | - | A | 1-21030-1 | PIN,DOWEL(Ø.187x.50)LEVER | 119 |
| REF | REF | - | A | 21045-3 | RING,RET"C"(Ø.187)FD PIN | 118 |
| REF | REF | - | A | 5-21028-1 | PIN,STD SPRING(Ø.12)FD ADJ ROD | 117 |
| REF | REF | - | A | 21899-4 | WASHER,FLAT(Ø5/16)SCR ADJ | 116 |
| | | | | | | 115 |
| | | | | | | 114 |
| | | | | | | 113 |
| REF | REF | - | A | 21024-5 | WASHER,LOCK(NO.10)FD ROD GDE | 112 |
| | | | | | | 111 |
| 6 | 6 | - | A | 21024-4 | WASHER,LOCK(NO.8)SHEAR BL | 110 |
| | | | | | | 109 |
| 2 | 2 | - | A | 21018-4 | NUT,HEX(4-40)DRAG | 108 |
| REF | REF | - | A | 21018-5 | NUT,HEX(6-32)FD ADJ PL | 107 |
| | | | | | | 106 |
| 2 | 2 | - | A | 21022-2 | NUT,HEX SL(8-32)DRAG STUD | 105 |
| | | | | | | 104 |
| | | | | | | 103 |
| 2 | 2 | - | A | 2-21006-6 | SCR,SKT SET(4-40x.62)DRAG | 102 |
| 1 | 1 | - | A | 21009-2 | SCR,SKT SET(1/4-20x.25)RAM | 101 |
| 2 | 2 | - | A | 21017-2 | SCR,DRIVE(#2x.19)ID PLATE | 100 |
| 1 | 1 | - | A | 1-21002-7 | SCR,BHC(6-32x.38)CAM | 99 |
| 1 | 1 | - | B | 461264-1 | PLATE, IDENTIFICATION | 98 |
| REF | REF | - | A | 6-23715-5 | SCR,PAN HD(6-32x1.50)FEED ADJ | 97 |
| | | | | | | 96 |
| 2 | 2 | - | A | 2-21002-2 | SCR,BHC(8-32x.50)STRIPPER | 95 |
| REF | REF | - | A | 2-21002-9 | SCR,BHC(10-32x.75)HSG CAP | 94 |
| 1 | 1 | - | A | 22733-8 | SCR,BHC(8-32x.38 LW)ANVIL | 93 |
| 4 | 4 | - | A | 3-21002-3 | SCR,BHC(1/4-20x.50)ST GD PL | 92 |
| REF | REF | - | A | 2-22733-8 | SCR,BHC(1/4-20x.62)BASE PL | 91 |
| | | | | | | 90 |
| | | | | | | 89 |
| | | | | | | 88 |
| 2 | 2 | - | A | 2-21000-7 | SCR,SHC(8-32x.50)SLUG BLADE | 87 |
| 2 | 2 | - | A | 2-21000-6 | SCR,SHC(8-32x.38)STRIP GUIDE | 86 |
| 2 | 2 | - | A | 2-21000-9 | SCR,SHC(8-32x.75)STRIP GUIDE | 85 |
| REF | REF | - | A | 3-21000-7 | SCR,SHC(10-32x.75)FEED ROD GDE | 84 |
| | | | | | | 83 |
| REF | REF | - | A | 3-21000-6 | SCR,SHC(10-32x.62)FEED ADJ PL | 82 |
| REF | REF | - | A | 3-21000-4 | SCR,SHC(10-32x.38)PIVOT BLOCK | 81 |
| 2 | 2 | - | A | 3-21000-7 | SCR,SHC(10-32x.75)SHEAR PL | 80 |
| REF | - | - | A | 455745-1 | GUARD, WINDOW | 79 |
| - | REF | - | A | 679532-1 | INSERT, GUARD | 78 |
| 1 | - | - | C | 465184-9 | LUBRICATOR ASSY | 77 |
| | | | | | | 76 |
| | | | | | | 75 |
| 1 | 1 | - | A | 690603-1 | SPRING, ASSIST | 74 |
| 1 | 1 | - | A | 23030-1 | SCR,SKT CAP(6-32x.25)CP DSC | 73 |
| REF | REF | - | A | 458109-1 | WASHER, FLAT (SPECIAL) | 72 |
| REF | REF | - | A | 690517-1 | SPACER | 71 |

| QTY | REF | U/M | DWG SIZE | PART NO | DESCRIPTION | ITEM NO |
|------------|-----|-----|----------|---------|-------------|---------|
| PARTS LIST | | | | | | |

| QTY | REF | U/M | DWG SIZE | PART NO | DESCRIPTION | ITEM NO |
|--|-----|-----|----------|------------|-----------------------|---------|
| REVISION OF EACH ASSY NO (WHEN BLANK, USE DWG REVISION) | | | | | | |
| PARTS LIST | | | | | | |
| 1 | 1 | - | B | 240644-9 | PLATE, REAR SHEAR | 11 |
| 2 | 2 | - | C | 1-240645-4 | SPACER, SHEAR PLATE | 10 |
| 1 | 1 | - | B | 240642-1 | PLATE, FRONT SHEAR | 9 |
| 1 | 1 | - | D | 8-240693-0 | ANVIL | 8 |
| 1 | 1 | - | B | 1-240651-8 | BLADE, SLUG | 7 |
| | | | | | | 6 |
| 1 | 1 | - | C | 240641-8 | SPACER, SLUG BLADE | 5 |
| 1 | 1 | - | B | 238009-1 | SPACER, BLOCK CRIMPER | 4 |
| 1 | 1 | - | C | 2-456135-1 | CRIMPER, INSULATION | 3 |
| 1 | 1 | - | B | 1-455888-0 | SPACER, CRIMPER | 2 |
| 1 | 1 | - | C | 1-456425-3 | CRIMPER, WIRE | 1 |
| QTY REQD PER ASSY | | | | | | |
| PARTS LIST | | | | | | |
| DIMENSIONS IN INCHES. DO NOT SCALE PRINT. TOLERANCES UNLESS OTHERWISE SPECIFIED: | | | | | | |
| 2 PLC DEC ± | | | | | | |
| 3 PLC DEC ± | | | | | | |
| 4 PLC DEC ± | | | | | | |
| ANGLES ± | | | | | | |
| SURF TEXTURE: ✓ REMOVE BURRS, BREAK SHARP EDGES R.015 MAX | | | | | | |
| SCALE: D DWG NO: 1385686 SHEET 1 of 1 REV B | | | | | | |
| CUSTOMER AND ASSEMBLY DRAWING | | | | | | |

THIS DRAWING IS A CONTROLLED DOCUMENT.

20

THIS DRAWING IS UNPUBLISHED. BY AMP INCORPORATED. ALL RIGHTS RESERVED. © COPYRIGHT 20