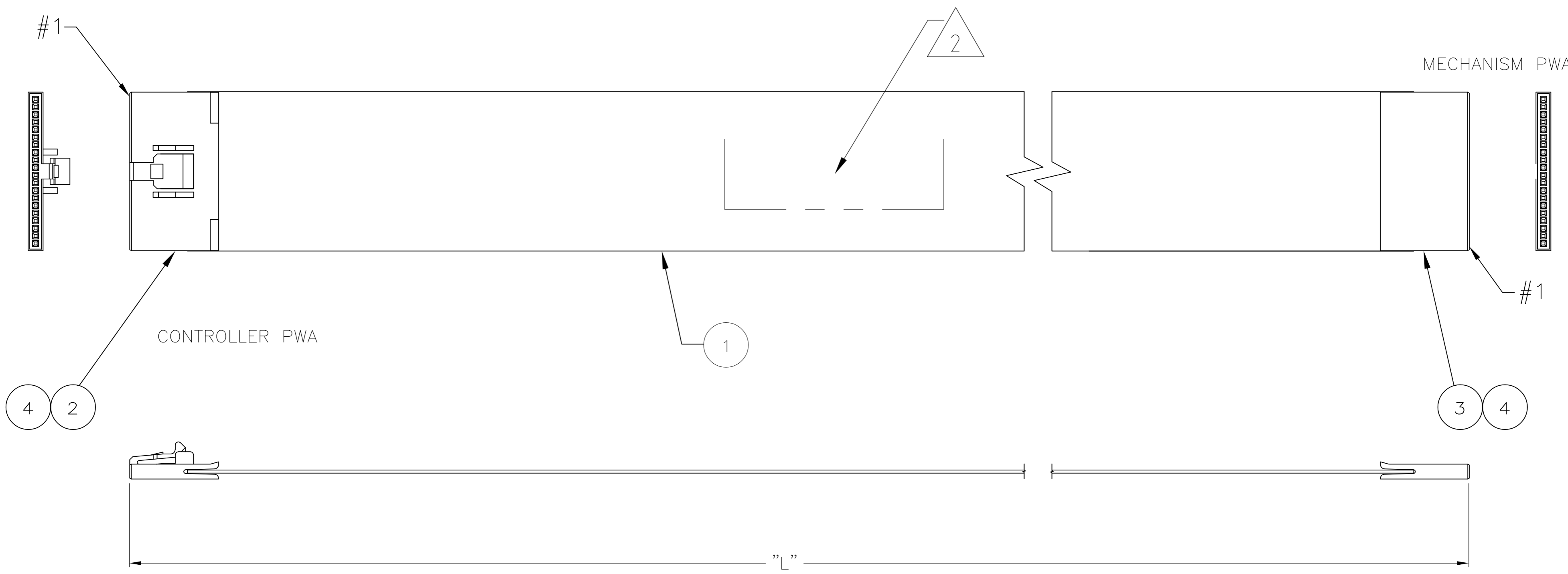


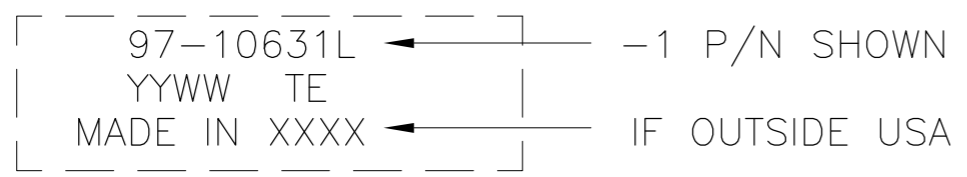
THIS DRAWING IS UNPUBLISHED. RELEASED FOR PUBLICATION
 © COPYRIGHT - By - ALL RIGHTS RESERVED.

LOC	DIST	REVISIONS					
GP	00	P	LTR	DESCRIPTION	DATE	DWN	APVD
		E		RELEASED PER ECO-13-012929	12/AUG/13	ECC	RB



1. PRODUCT AND PROCESSING MUST MEET REQUIREMENTS OF TE STANDARD TEC-138-702.

2. MARK .12" REF HIGH BLACK CHARACTERS IN APPROXIMATE AREA SHOWN.



3. 100% ELECTRICAL FOR CONTINIUTY, SHORTS AND OPENS.
 CONNECTION RES: 2 OHMS
 INSULATION RESISTANCE: 15 MEGAOHMS
 HI-POT: 630 VOLTS AT 10 MILLISECONDS

C	97-12240L	238.0±6.35 [9.37±.25]	2181889-2
C	97-10631L	356.0±6.35 [14.02±.25]	2181889-1
CUSTOMER REV	CUSTOMER P/N	"L" DIMENSION	TE P/N

40	40	PC	CONTACT, FFC, RECPT, .050 ϕ	4
1	1	PC	HOUSING, FFC, RECPT, W/O LOCKING TAB	3
1	1	PC	HOUSING, FFC, RECPT, .050 ϕ , 20P	2
0.780	1.624	FT	CABLE, FFC, UL 2690, 20C	1
-2	-1	U/M	DESCRIPTION	ITEM

THIS DRAWING IS A CONTROLLED DOCUMENT.

DIMENSIONS: mm [INCHES]	TOLERANCES UNLESS OTHERWISE SPECIFIED: 0 PLC ± - 1 PLC ± - 2 PLC ± - 3 PLC ± - 4 PLC ± - ANGLES ± -	FINISH	WEIGHT	SCALE	SHEET	REV
				A2	00779	E

TE Connectivity
 CABLE ASSY, FFC, 20P, RECPT, BOTH ENDS

CUSTOMER DRAWING

SCALE: N.T.S. SHEET 1 OF 1