

Description: 2520 LB & JB-MB Diplexer

PART NUMBER: DPX2520LWUDRWP31L

Features:

- Compact size : 2.50x2.00x0.8mm
- Low loss : Low insertion loss, high attenuation.

Applications:

- GSM/WCDMA/LTE mobile communication systems

ELECTRICAL SPECIFICATIONS

| DESCRIPTION | VALUE | |
|------------------------------|---|--|
| | Low Band | High Band |
| Pass Band | 699~960MHz 960~1427MHz 1427~1710MHz 1710~1990MHz 1990~2110MHz 2110~2170MHz | 2300~2350MHz 2350~2500MHz 2500~2690MHz 3300~3600MHz |
| Insertion loss | 0.39dB (typ.) /0.7dB (Min) 0.52dB (typ.) /0.85dB (Min) 0.52dB (typ.) /0.95dB (Min) 0.67dB (typ.) /1.15dB (Min) 1.28dB (typ.) /1.65dB (Min) 2.07dB (typ.) /2.7dB (Min) | 1.8dB (typ.) /2.85dB (Min) 1.09dB (typ.) /1.65dB (Min) 0.58dB (typ.) /0.85dB (Min) 0.40dB (typ.) /0.85dB (Min) |
| Return Loss(Min) | 15.7dB (typ.) /10dB (Min) | 12.8dB (typ.) /10dB (Min) |
| Attenuation (Min) | 10.1dB(typ.)/5dB@2300~2350MHz 15.5dB(typ.)/10dB@2350~2500MHz 22.4dB(typ.)/15dB@2500~2690MHz | 14.8dB(typ.)/12dB@699~960MHz 13.7dB(typ.)/12dB@960~1427MHz 13.7dB(typ.)/12dB@1427~1710MHz 14.2dB(typ.)/10dB@1710~1990MHz 17.6dB(typ.)/12dB@1990~2110MHz 10.7dB(typ.)/5dB@2110~2170MHz |
| Isolation (Min) | 13.6dB(typ.)/12dB@699~960MHz 12.6dB(typ.)/11dB@960~1427MHz 12.6dB(typ.)/11dB@1427~1710MHz 14dB(typ.)/10dB@1710~1990MHz 16.9dB(typ.)/12dB@1990~2110MHz 11.6dB(typ.)/5dB@2110~2170MHz 11.3dB(typ.)/5dB@2300~2350MHz 14.9dB(typ.)/10dB@2350~2500MHz 23.2dB(typ.)/15dB@2500~2690MHz | |
| Operating Temperature | -40 ~ 85°C | |

In the effort to improve our products, we reserve the right to make changes judged to be necessary.

CONFIDENTIAL AND PROPRIETARY INFORMATION

This document contains confidential and proprietary information of Pulse Electronics, Inc. (Pulse) and is protected by copyright, trade secret and other state and federal laws. Its receipt or possession does not convey any rights to reproduce, disclose its contents, or to manufacture, use or sell anything it may describe. Reproduction, disclosure or use without specific written authorization of Pulse is strictly forbidden.

For more information:



Pulse Worldwide Headquarters
15255 Innovation Drive #100
San Diego, CA 92128
USA
Tel:1-858-674-8100

Pulse/Larsen Antennas
18110 SE 34th St Bldg 2 Suite 250
Vancouver, WA 98683
USA
Tel: 1-360-944-7551

Europe Headquarters
Pulse GmbH & Do, KG
Zeppelinstrasse 15
Herrenberg, Germany
Tel: 49 7032 7806 0

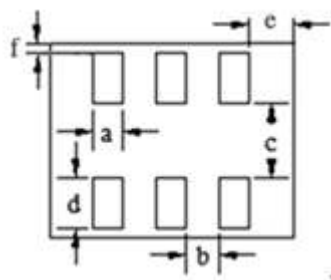
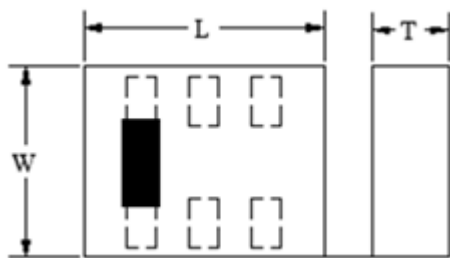
Pulse (Suzhou) Wireless Products Co, Inc.
99 Huo Ju Road(#29 Bldg,4th Phase
Suzhou New District
Jiangsu Province, Suzhou 215009 PR China
Tel: 86 512 6807 9998

Description: 2520 LB & JB-MB Diplexer

PART NUMBER: DPX2520LWUDRWP31L

MECHANICAL DIMENSION

Outline



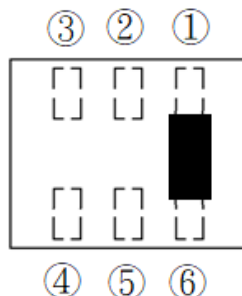
Termination

| Terminal name | Function |
|---------------|-----------|
| P1 | High band |
| P2 | GND |
| P3 | Low band |
| P4 | GND |
| P5 | Common |
| P6 | GND |

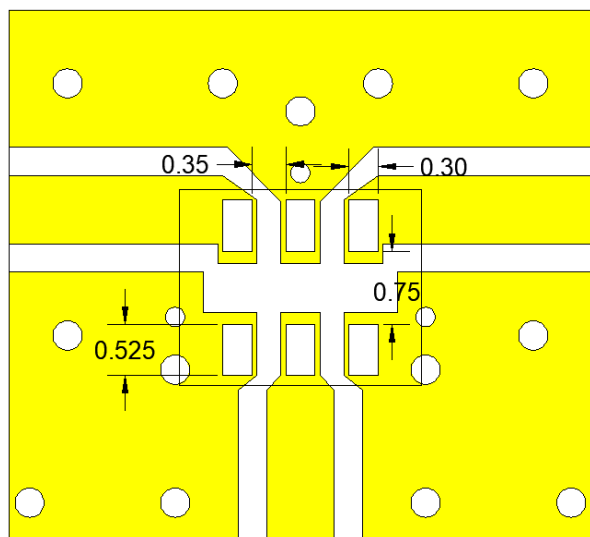
Mechanical

| | Dimension |
|--------|------------|
| L (mm) | 2.50±0.10 |
| W (mm) | 2.00±0.10 |
| W (mm) | 0.80±0.10 |
| a (mm) | 0.30±0.10 |
| b (mm) | 0.35±0.10 |
| c (mm) | 0.75±0.10 |
| d (mm) | 0.525±0.10 |
| e (mm) | 0.45±0.10 |
| f (mm) | 0.10±0.10 |

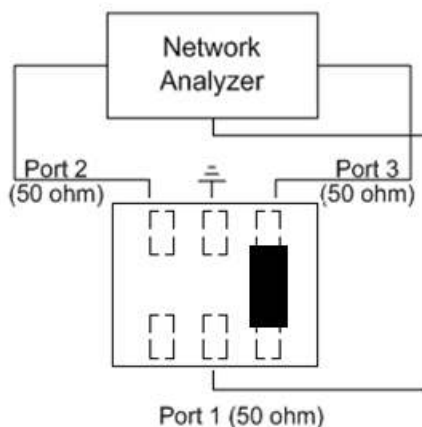
Top View



Recommended Land Pattern



Unit : mm



Line width should be designed to match 50Ω characteristic impedance, depending on PCB material and thickness.

In the effort to improve our products, we reserve the right to make changes judged to be necessary.

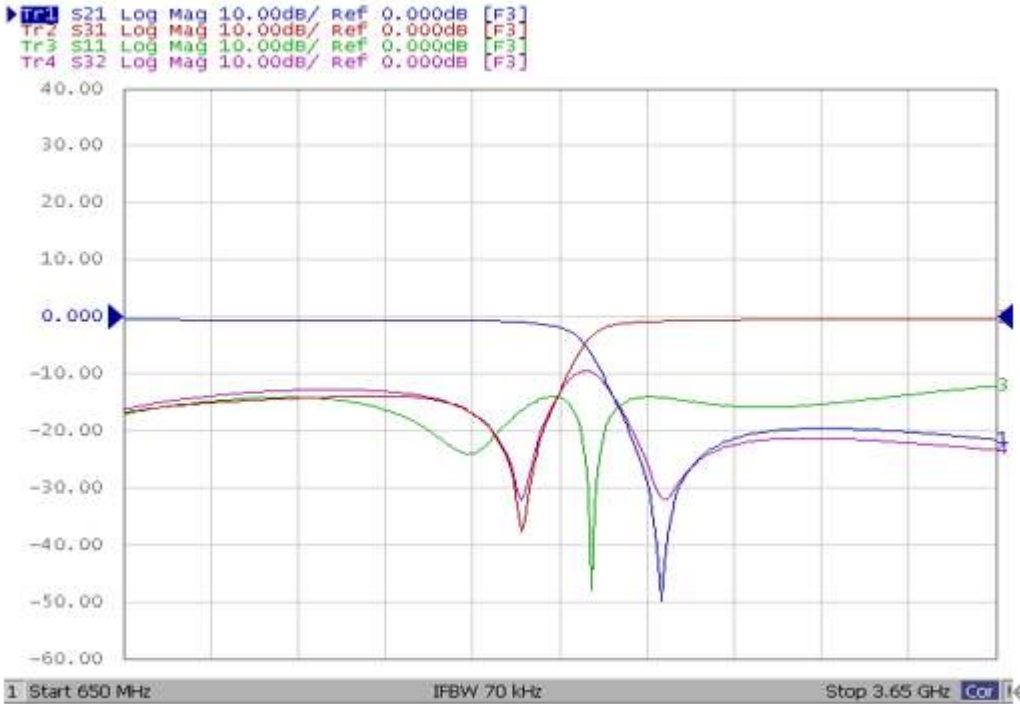
CONFIDENTIAL AND PROPRIETARY INFORMATION

This document contains confidential and proprietary information of Pulse Electronics, Inc. (Pulse) and is protected by copyright, trade secret and other state and federal laws. Its receipt or possession does not convey any rights to reproduce, disclose its contents, or to manufacture, use or sell anything it may describe. Reproduction, disclosure or use without specific written authorization of Pulse is strictly forbidden.

Description: 2520 LB & JB-MB Diplexer

PART NUMBER: DPX2520LWUDRWP31L

ELECTRICAL PERFORMANCES



- Measured on Agilent E5071C Network Analyzer

Frequency Characteristics

Description: 2520 LB & JB-MB Diplexer

PART NUMBER: DPX2520LWUDRWP31L

REVISION HISTORY

| Revision | Date | Description |
|-----------|---------------|-------------|
| Version 1 | Jan. 21, 2022 | - New issue |