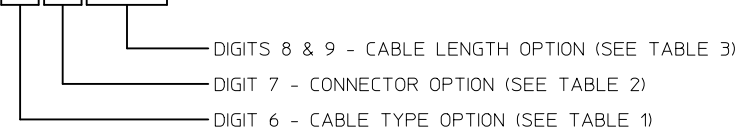


|   |                                           |
|---|-------------------------------------------|
| 1 | LEONI STÜDER BETAFLAM (TÜV - 224803)      |
| 2 | LEONI STÜDER BETAFLAM (TÜV & UL - 224780) |

|   |                                 |
|---|---------------------------------|
| 1 | SINGLE ENDED, NEGATIVE (MALE)   |
| 2 | SINGLE ENDED, POSITIVE (FEMALE) |

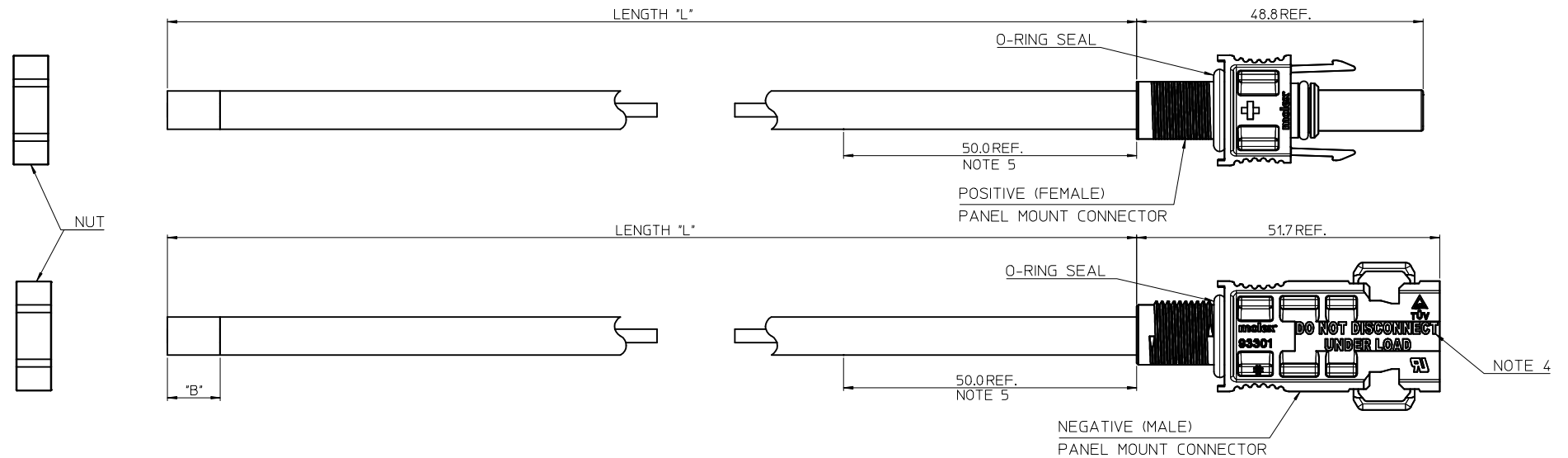
|    |                          |          |
|----|--------------------------|----------|
| 01 | 0.025m (25mm) +15mm/-0mm | 6mm ±1mm |
|----|--------------------------|----------|

93457-XXXX



### HOW TO SELECT CABLE ASSEMBLY

1. CHOOSE YOUR PREFERRED CABLE TYPE FROM TABLE 1
2. CHOOSE EITHER POSITIVE OR NEGATIVE PANEL MOUNT DC CONNECTORS FROM TABLE 2
3. CHOOSE YOUR CABLE LENGTH FROM TABLE 3
4. CREATE YOUR PART NUMBER BY SUBSTITUTING THE APPROPRIATE NUMBERS FOR XXXX



- NOTES:
1. SEE TABLE 1 FOR AVAILABLE CABLE TYPES.
  2. CABLE ENDS WILL BE SUPPLIED PARTIALLY PRE-STRIPPED.
  3. ALL CONNECTORS ARE MOLEX DC PANEL MOUNT CONNECTORS (INDUSTRY STANDARD COMPATIBLE). SEE SD-93301-001 FOR CONNECTOR DETAILS.
  4. DISCONNECTION WARNING EMBOSSED ONTO PLASTIC HOUSING OF NEGATIVE (MALE) CONNECTOR.
  5. TO PREVENT DAMAGE TO THE ELECTRICAL CONNECTION AVOID BENDING OF THE CABLE WITHIN THIS DIMENSION OF THE CONNECTOR.
  6. PRODUCT SPECIFICATION: TBC
  7. PACKAGING SPECIFICATION: TBC
  8. MODEL: EM-93457-010

|                                                                                                                                         |                               |                                                                                                                               |         |                                                      |                    |                                                                   |                                     |                            |  |
|-----------------------------------------------------------------------------------------------------------------------------------------|-------------------------------|-------------------------------------------------------------------------------------------------------------------------------|---------|------------------------------------------------------|--------------------|-------------------------------------------------------------------|-------------------------------------|----------------------------|--|
| <b>ORIGINAL RELEASE</b><br>EC NO: IPG2013-1727<br>DRWN: SMCREEVY 2013/04/19<br>CHKD: MSHANAHAN 2013/05/09<br>APPR: STGRIFFIN 2013/05/22 | QUALITY SYMBOLS<br>▽=0<br>▽=0 | GENERAL TOLERANCES (UNLESS SPECIFIED)                                                                                         |         | DIMENSION STYLE<br><b>MM ONLY</b>                    |                    | SCALE<br><b>2:1</b>                                               | DESIGN UNITS<br><b>METRIC</b>       | THIRD ANGLE PROJECTION     |  |
|                                                                                                                                         |                               | 4 PLACES ± --- ± ---                                                                                                          | mm INCH | DRAWN BY<br>SMCREEVY                                 | DATE<br>2013/04/19 | TITLE<br><b>4MMSQ SOLAR DC CABLE ASSEMBLY W/ MX PANEL MT CONN</b> |                                     |                            |  |
|                                                                                                                                         |                               | 3 PLACES ± --- ± ---                                                                                                          |         | CHECKED BY<br>MSHANAHAN                              | DATE<br>2013/04/22 | <b>molex</b>                                                      |                                     |                            |  |
|                                                                                                                                         |                               | 2 PLACES ± 0.05 ± ---                                                                                                         |         | APPROVED BY<br>STGRIFFIN                             | DATE<br>2013/05/22 | MATERIAL NO.<br><b>SEE CHARTS</b>                                 | DOCUMENT NO.<br><b>SD-93457-001</b> | SHEET NO.<br><b>1 OF 1</b> |  |
|                                                                                                                                         |                               | 1 PLACE ± 0.10 ± ---                                                                                                          |         | DRAFT WHERE APPLICABLE MUST REMAIN WITHIN DIMENSIONS |                    |                                                                   |                                     |                            |  |
| 0 PLACE ± --- ± ---                                                                                                                     |                               | THIS DRAWING CONTAINS INFORMATION THAT IS PROPRIETARY TO MOLEX INCORPORATED AND SHOULD NOT BE USED WITHOUT WRITTEN PERMISSION |         |                                                      |                    |                                                                   |                                     |                            |  |