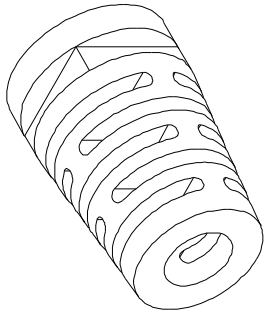
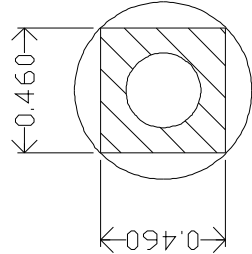
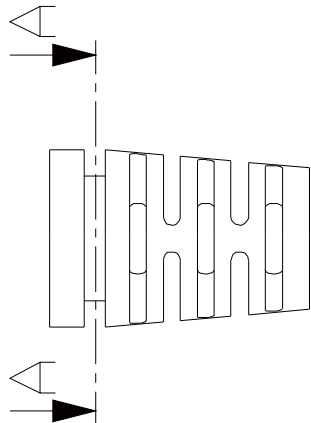
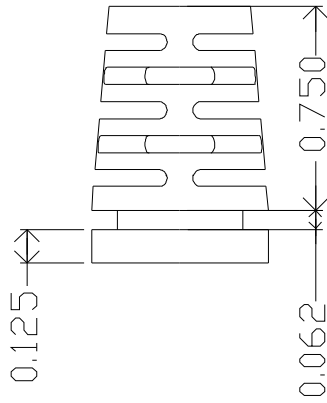
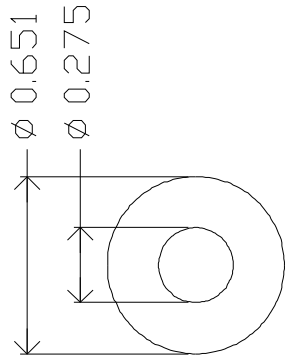


ZONE	REV.	DESCRIPTION	DATE	APPROVED



MOLD MATERIAL: ISC P/N: 5000214, PVC, M1472. Black, RoHS

DIMENSIONS ARE IN INCHES	NAME	DATE	ISC Engineering
TOLERANCES:	R FIERRO	01/18/05	4351 Schaefer Ave, Chino, CA 91710
FRACTIONAL ±	CHECKED		Ph: 909-596-3315 Fax: 909-596-3335
ANGULAR: MACH ± BEND ±	ENG APPR		www.iscengineering.com
TWO PLACE DECIMAL ±	MFG APPR		www.overnatooling.com
THREE PLACE DECIMAL ±	Q.A.		
MATERIAL	COMMENTS:		
FINISH	ROUND, MULTIFLEX		
NEXT ASSY USED ON	1461080-275-B-460X460-651-0		
APPLICATION	DO	NOT	SCALE
			DRAWING

Dimensions are subject to change.
 PROPRIETARY AND CONFIDENTIAL
 THE INFORMATION CONTAINED IN THIS
 DRAWING IS THE SOLE PROPERTY OF
 ISC ENGINEERING. ANY REPRODUCTION IN
 PART OR AS A WHOLE WITHOUT THE WRITTEN
 PERMISSION OF ISC ENGINEERING IS
 PROHIBITED.



SIZE/DWG. NO. 1467296
 REV. A
 SCALE: 1:1 WEIGHT: SHEET 1 OF 1