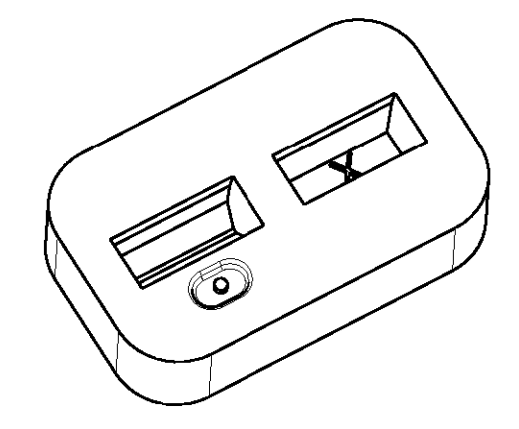
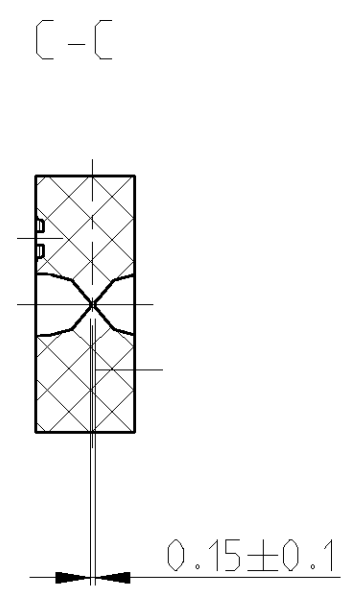
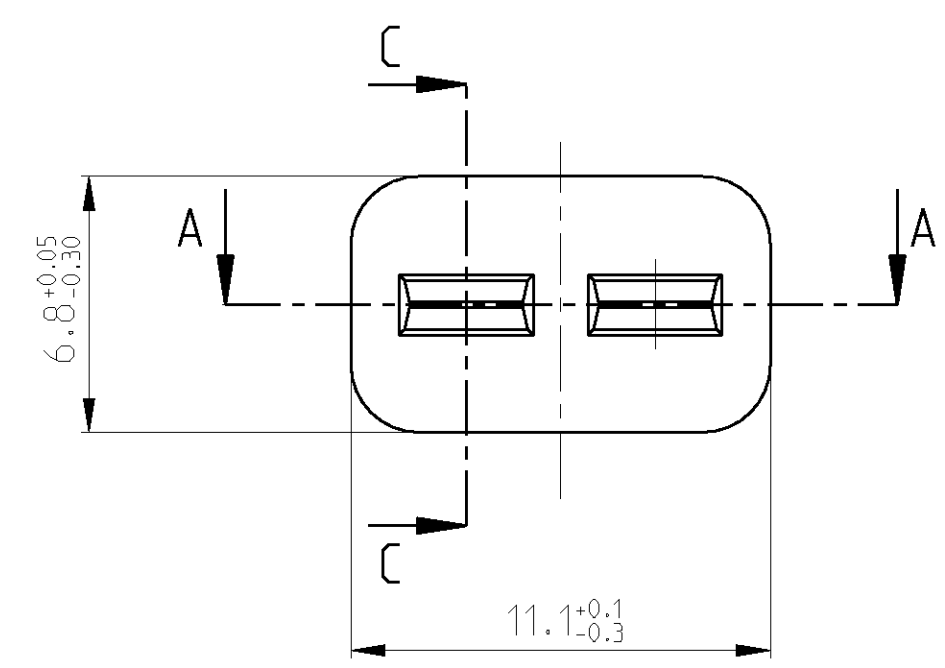
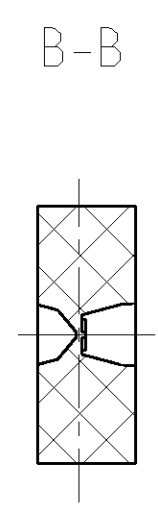
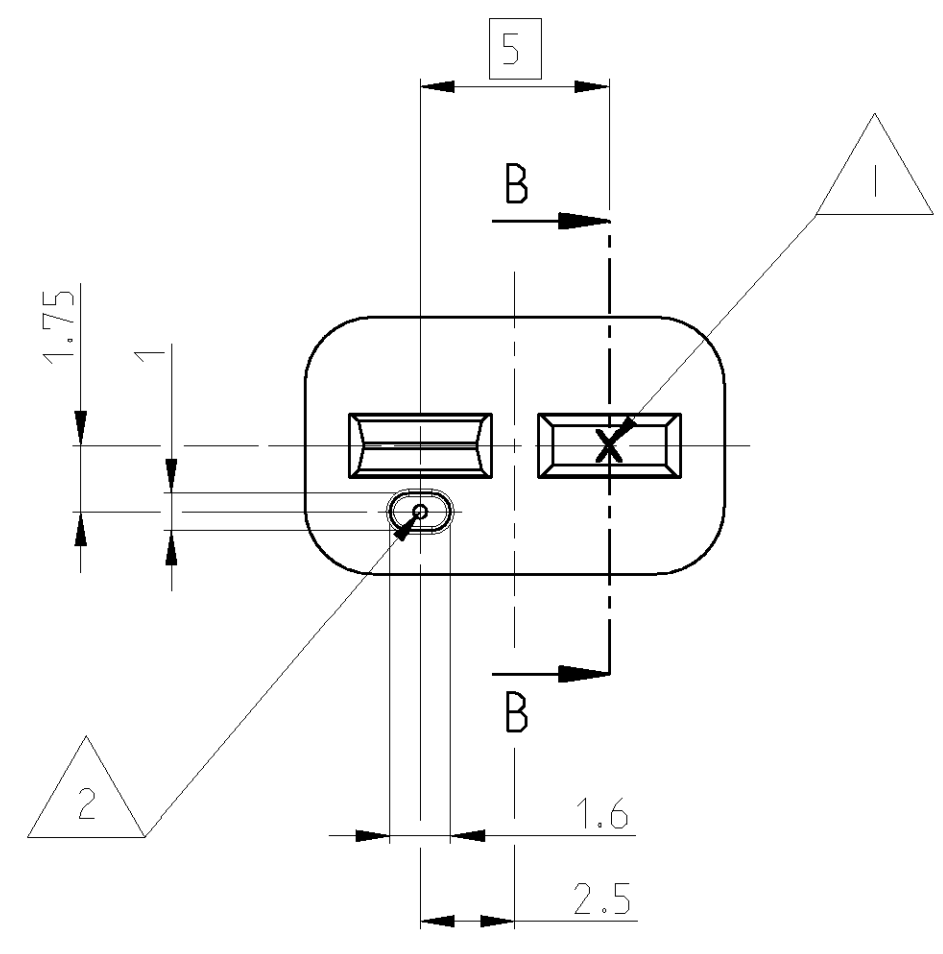
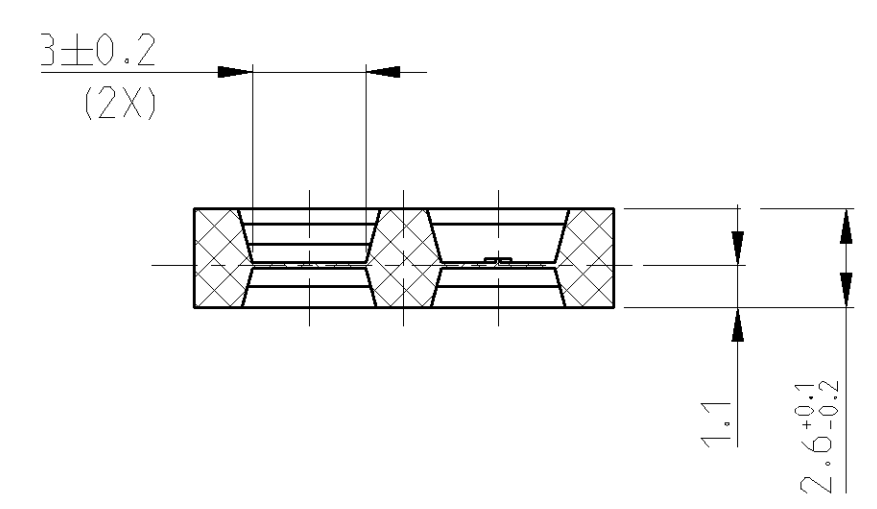


THIS DRAWING IS UNPUBLISHED. RELEASED FOR PUBLICATION 2006  
 © COPYRIGHT 2006 BY TYCO ELECTRONICS CORPORATION. ALL RIGHTS RESERVED.

| LOC | DIST | REVISIONS       |           |     |      |
|-----|------|-----------------|-----------|-----|------|
| P   | LTR  | DESCRIPTION     | DATE      | DWN | APVD |
| A1  | -    |                 |           |     |      |
|     | D    | SEE E-06-017312 | 04JUL2006 | LN  | TK   |
|     | D1   | SEE E-06-022754 | 25SEP2006 | LN  | VB   |



SECTION A-A  
Schnitt



NOTES  
Bemerkungen

- 1 CAVITY MARKING RAISED, OPTIONAL  
IN ONE OF THE WINDOWS  
Nestmarkierung erhaben, wahlweise  
in einem der Fenster
- 2 GATE AREA SUNK  
GATEMARK MUST NOT GET THROUGH OUTER GEOMETRY  
Angussbereich vertieft  
Anguss darf nicht aus der aeusseren  
Geometrie ueberstehen

|          |     |             |        |            |      |
|----------|-----|-------------|--------|------------|------|
| 963209-1 | D   | SEALING     | NATURE | 0.18       | 1    |
| PART NO  | REV | DESCRIPTION | COLOUR | WEIGHT [g] | ITEM |

|  |  |                                |   |  |  |
|--|--|--------------------------------|---|--|--|
| THIS DRAWING IS A CONTROLLED DOCUMENT FOR TYCO ELECTRONICS CORPORATION<br>IT IS SUBJECT TO CHANGE AND THE CONTROLLING ENGINEERING ORGANIZATION<br>SHOULD BE CONTACTED FOR THE LATEST REVISION. |  | DWN<br>L. Nguyen 04 JUL 2006   | tyco Electronics AMP GmbH<br>64625 Bensheim (Germany)                 |  |  |
| DIMENSIONS:<br>mm  |  | CHK<br>T. Kilian 18 JUL 2006   |   |  |  |
| TOLERANCES UNLESS OTHERWISE SPECIFIED:   |  | APVD<br>D. Duenkel 18 JUL 2006 | NAME<br>SEALING FOR 2POS. JPT HOUSING<br>Dichtung fuer 2pol. Gehaeuse |  |  |
| 0 PLC ±0.3   |  | PRODUCT SPEC                   | SIZE  |  |  |
| 1 PLC ±0.3   |  | 108-18102                      | CAGE CODE   |  |  |
| 2 PLC ±0.3   |  | APPLICATION SPEC               | DRAWING NO  |  |  |
| 3 PLC ±  |  | 114-18175                      | RESTRICTED TO   |  |  |
| 4 PLC ±  |  | WEIGHT                         | A2 00779 C=963209   |  |  |
| ANGLES ±°  |  | CUSTOMER DRAWING               | SCALE 5:1 SHEET 1 OF 1 REV 01   |  |  |
| FINISH   |  | MATERIAL<br>Silicone           |   |  |  |