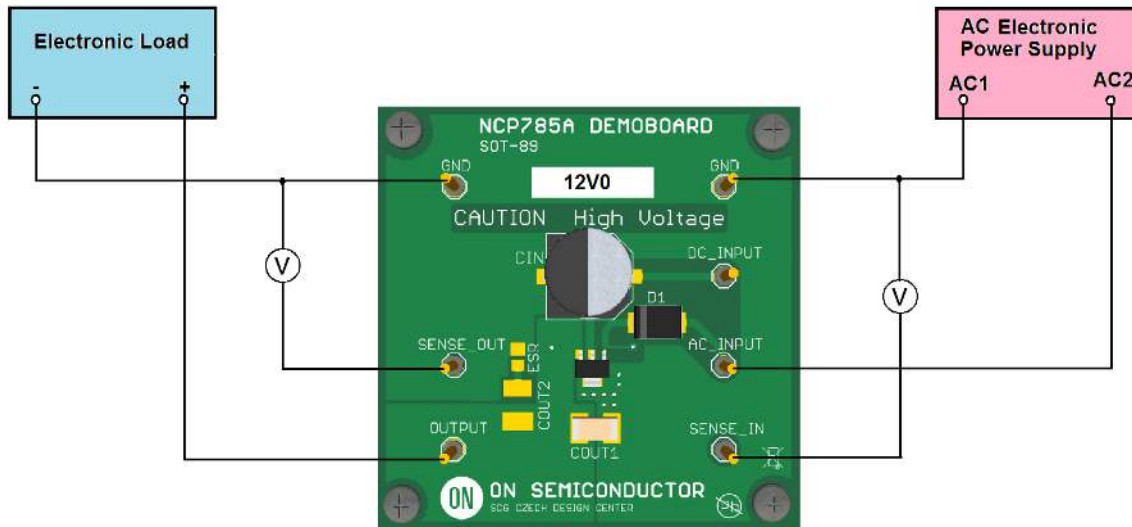




## Test Procedure for NCP785AH120GEVB



### Test procedure:

1. Connect the test setup as shown Figure above
2. Apply an input AC voltage  $V_{in} = 85 \text{ Vac}$
4. Apply  $I_{out} = 0 \text{ mA}$  load.
5. Check that  $V_{out}$  is  $12.0 \text{ V} \pm 5\%$ .
6. Increase  $I_{out}$  up to  $10 \text{ mA}$
7. Check that  $V_{out}$  is  $12.0 \text{ V} \pm 5\%$ .
7. Increase  $V_{in}$  up to  $235 \text{ Vac}$  and decrease the load in accordance with SOA
8. Power down the Load
9. Power down the Input Voltage
10. End of test