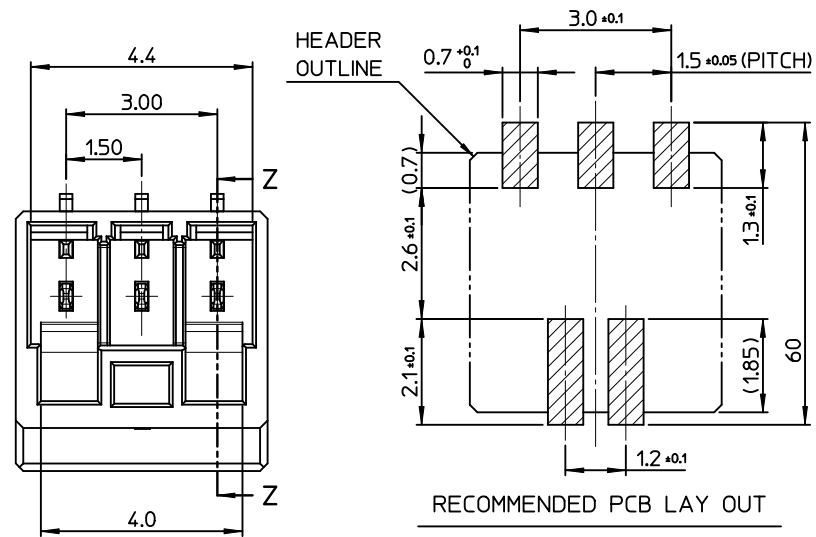
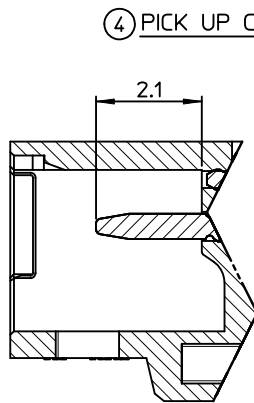


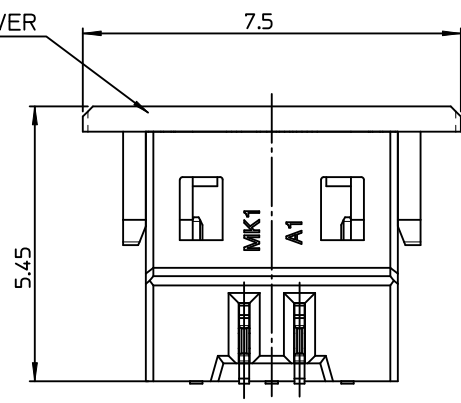
10 9 8 7 6 5 4 3 2 1



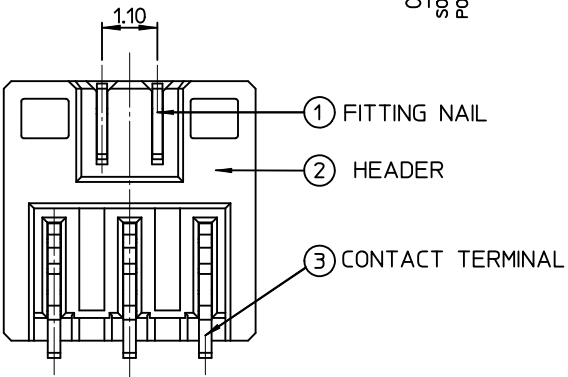
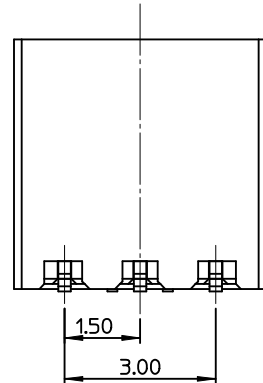
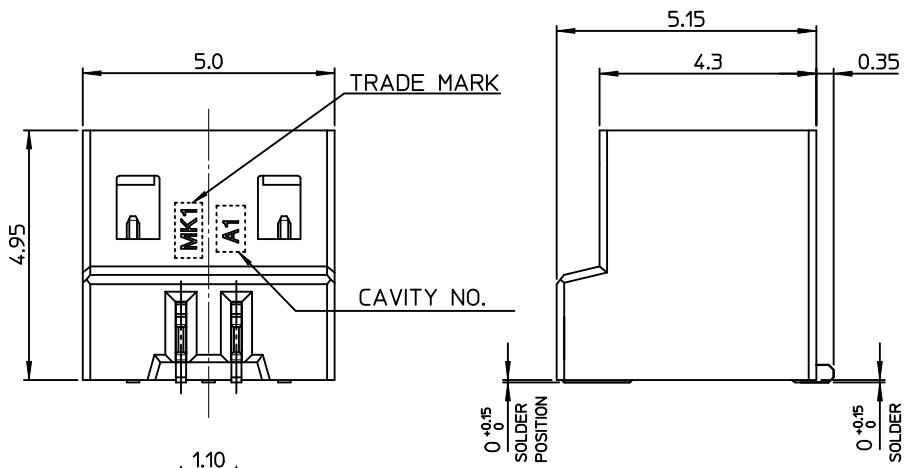
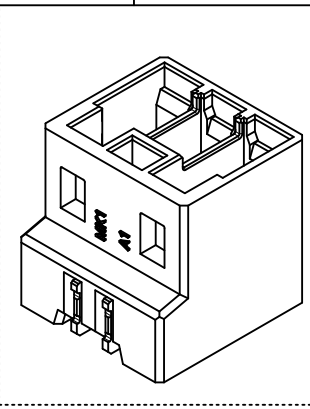
RECOMMENDED PCB LAY OUT



SECTION Z-Z



MATED WITH PICK UP COVER

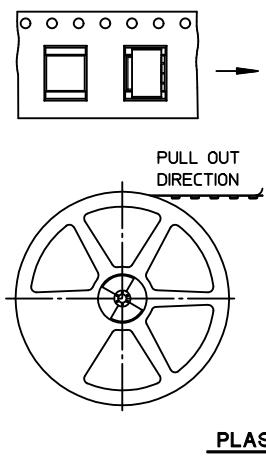
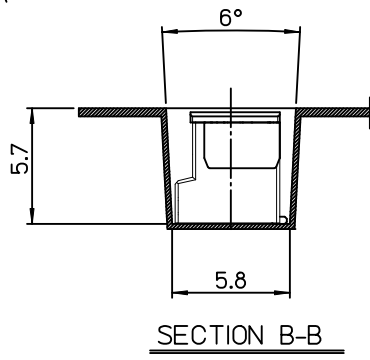
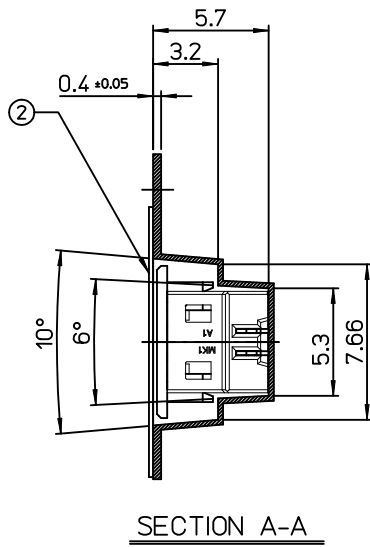
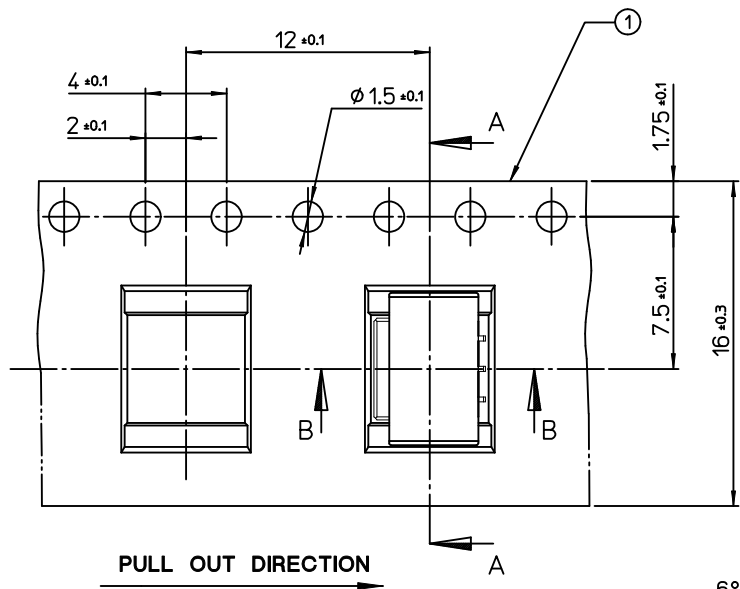


NOTE

1. MATED WITH : 104079-0300
2. MATERIALS
 - HEADER : LCP, GLASS FILLED, UL94V-0, HALOGEN FREE COLOR OF NATURAL
 - CONTACT TERMINAL : POSPHOR BRONZE
 - FITTING NAIL : PHOSPHOR-BRONZE
 - PICK UP COVER : PA46, GLASS FILLED, UL94V-0 COLOR OF NATURAL
3. FINISHES
 - CONTACT TERMINAL : PURE-TIN PLATING ON OVERALL. THICKNESS 3.0μm~5.0μm UNDER PLATING Ni OVERALL. THICKNESS 1.25μm~3.75μm
 - FITTING NAIL : PURE-TIN PLATING ON OVERALL. THICKNESS 3.0μm~5.0μm UNDER PLATING Ni OVERALL. THICKNESS 1.25μm~3.75μm
4. COPLANALITY OF SOLDER TAILS (PEAK TEMP. : 260°C), BEFORE & AFTER REFLOW : 0.08MAX
5. PRODUCT SPECIFICATION : PS-104080-001
6. PACKING SPECIFICATION : PK-104080-001

NEW RELEASED EC NO: KOR2010-0199 DRWN:CBCHIN 2010/06/09 CHKD:SH.CHU 2010/06/09 APPR:YUNSIKIM 2010/06/09	QUALITY SYMBOLS	GENERAL TOLERANCES (UNLESS SPECIFIED)	DIMENSION STYLE	SCALE	DESIGN UNITS	THIRD ANGLE PROJECTION
	▼=0 ▽=0	mm INCH 4 PLACES ± --- ± --- 3 PLACES ± --- ± --- 2 PLACES ± --- ± --- 1 PLACE ± 0.15 ± --- ANGULAR ± 3 °	MM ONLY	10:1	METRIC	
	DESCRIPTION		DRAWN BY	DATE	TITLE	
			JB. JIN	2010/01/21	1.5 WIRE TO BOARD CONN. HEADER ASS'Y-3P	
		CHECKED BY	DATE			
		SH. CHU	2010/01/21			
		APPROVED BY	DATE			
		YS. KIM	2010/01/21			
		MATERIAL NO.				
		1040800310				
		DRAFT WHERE APPLICABLE MUST REMAIN WITHIN DIMENSIONS				
			SIZE			
			A3			
			THIS DRAWING CONTAINS INFORMATION THAT IS PROPRIETARY TO MOLEX INCORPORATED AND SHOULD NOT BE USED WITHOUT WRITTEN PERMISSION			

9 8 7 6 5 4 3 2 1



NOTES

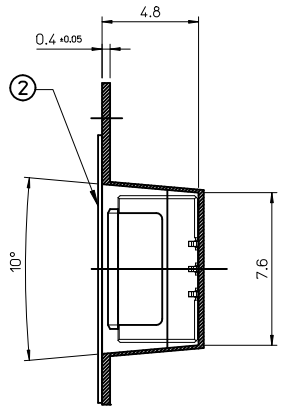
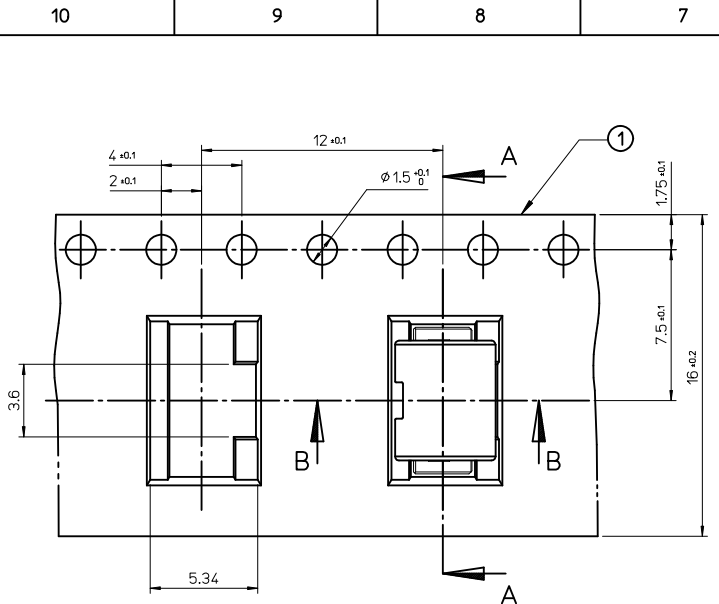
1. QUANTITY OF CONNECTORS : 1,200 PCS/REEL
2. LEAD LENGTH
3. PEELING OFF FORCE OF COVER TAPE : 0.1N~0.59N(10.2GF~60GF)
 (PEELING DIRECTION AS SHOW IN FOLLOW FIG.)
 PEELING OFF SPEED : 300mm/Min.(Ref.)
4. FLASH IN ANY PORTION SHOULD BE LESS THAN 0.20mm MAX.
5. UNLESS OTHERWISE SPECIFIED INNER R0.2 MAX
6. DRAFT ANGLE 3°MAX

[TABLE]

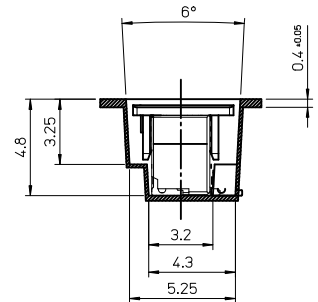
1040800317	104080-0310	16.0mm	104080-9901
MATERIAL NO.	CONNECTOR	TAPE WIDTH	EMBOSS TAPE

3	PLASTIC BOBBIN	HI P.S	WHITE
2	COVER TAPE	PET ANTISTATIC	13.3m
1	CARRIER (EMBOSS) TAPE	PET ANTISTATIC	
NO.	DESCRIPTION	MATERIAL	REMARK

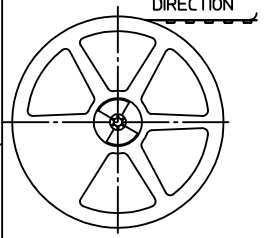
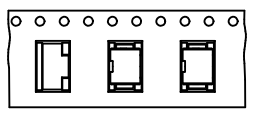
NEW RELEASED EC NO: KOR2010-0199 DRWN:CBCHN 2010/06/09 CHKD:SH.CHU 2010/06/09 APPR:YUNSIKIM 2010/06/09	QUALITY SYMBOLS	GENERAL TOLERANCES (UNLESS SPECIFIED)	DIMENSION STYLE	SCALE	DESIGN UNITS	THIRD ANGLE PROJECTION
	▽=0 ▽=0	mm INCH 4 PLACES ± --- ± --- 3 PLACES ± --- ± --- 2 PLACES ± --- ± --- 1 PLACE ± 0.25 ± --- ANGULAR ± 3 °	MM ONLY	4:1	METRIC	DRAWN BY: JB. JIN DATE: 2010/01/21 CHECKED BY: DATE: 2010/01/21 APPROVED BY: YS. KIM DATE: 2010/01/21
	DESCRIPTION	DRAFT WHERE APPLICABLE MUST REMAIN WITHIN DIMENSIONS	MATERIAL NO.	TITLE		
	A	SEE TABLE	SD-104080-002	EMBOSS PACKAGE 1.5 WIRE TO BOARD CONN. HEADER ASS'Y-3P		
			MATERIAL NO.		DOCUMENT NO.	SHEET NO.
			SD-104080-002			1 OF 01
THIS DRAWING CONTAINS INFORMATION THAT IS PROPRIETARY TO MOLEX INCORPORATED AND SHOULD NOT BE USED WITHOUT WRITTEN PERMISSION						



SECTION A-A



SECTION B-B



PLASTIC BOBBIN

NOTES

1. QUANTITY OF CONNECTORS : 1,500 PCS/REEL
2. LEAD LENGTH
3. PEELING OFF FORCE OF COVER TAPE : 0.1N~0.59N(10.2GF~60GF)
 (PEELING DIRECTION AS SHOW IN FOLLOW FIG.)
 PEELING OFF SPEED : 300mm/Min.(Ref.)
4. FLASH IN ANY PORTION SHOULD BE LESS THAN 0.20mm MAX.
5. UNLESS OTHERWISE SPECIFIED INNER R0.2 MAX
6. DRAFT ANGLE 3°MAX

[TABLE]

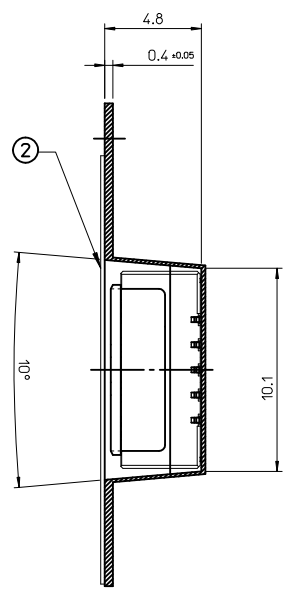
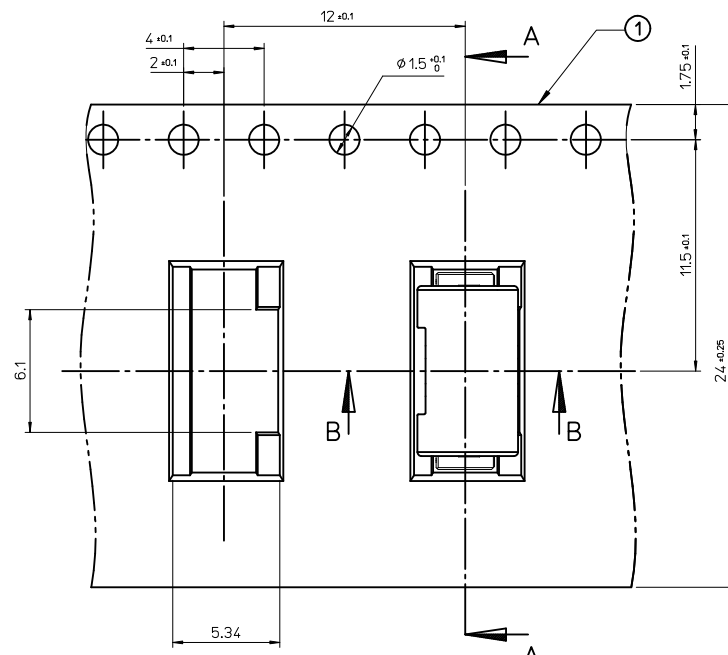
1041300310	104130-0310	16.0mm	104130-9901
MATERIAL NO.	CONNECTOR	TAPE WIDTH	EMBOSS TAPE

3	PLASTIC BOBBIN	HI P.S	WHITE
2	COVER TAPE	PET ANTISTATIC	13.3m
1	CARRIER (EMBOSS) TAPE	PET ANTISTATIC	
NO.	DESCRIPTION	MATERIAL	REMARK

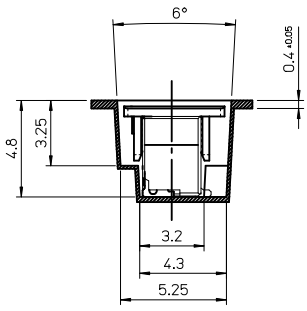
ORDER NO 104130-0310

RELEASED EC NO: KOR2012-0059 DRWN: JHPARK01 2011/12/19 CHKD: SHCHU 2011/12/19 APPR: YUNSIKKIM 2011/12/29	QUALITY SYMBOLS ▽=0 ▽=0	GENERAL TOLERANCES (UNLESS SPECIFIED) mm INCH 4 PLACES ± --- ± --- 3 PLACES ± --- ± --- 2 PLACES ± --- ± --- 1 PLACE ± 0.25 ± --- ANGULAR ± 3 °	DIMENSION STYLE MM ONLY DRAWN BY: JB. JIN DATE: 2010/01/21 CHECKED BY: SH. CHU DATE: 2010/01/21 APPROVED BY: YUNSIKKIM DATE: 2011/12/29	SCALE: DESIGN UNITS: METRIC THIRD ANGLE PROJECTION	TITLE: EMBOSSED PACKAGE 1.25 WIRE TO BOARD CONN. HEADER ASS'Y-3P
	DRAFT WHERE APPLICABLE MUST REMAIN WITHIN DIMENSIONS	MATERIAL NO.: 1041300310 SIZE: A3	MOLEX INCORPORATED DOCUMENT NO.: SD-104130-002	SHEET NO.: 1 OF 1	
	THIS DRAWING CONTAINS INFORMATION THAT IS PROPRIETARY TO MOLEX INCORPORATED AND SHOULD NOT BE USED WITHOUT WRITTEN PERMISSION				

10 9 8 7 6 5 4 3 2 1

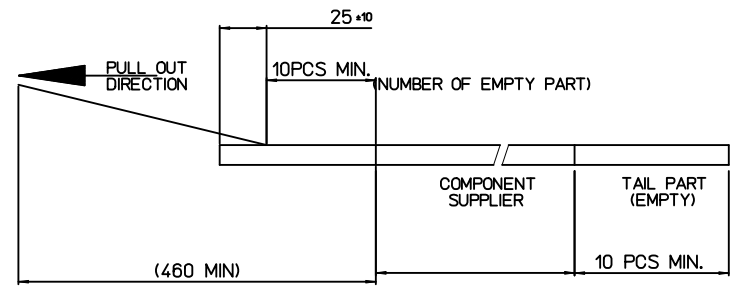


SECTION A-A

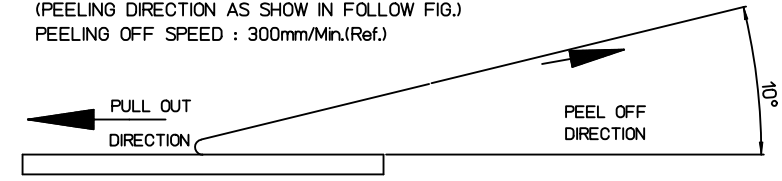


SECTION B-B

- NOTES
 1. QUANTITY OF CONNECTORS : 1,500 PCS/REEL
 2. LEAD LENGTH



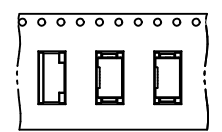
3. PEELING OFF FORCE OF COVER TAPE : 0.1N~0.59N(10.2GF~60GF)
 (PEELING DIRECTION AS SHOW IN FOLLOW FIG.)
 PEELING OFF SPEED : 300mm/Min.(Ref.)



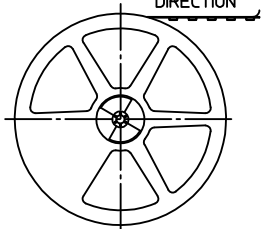
4. FLASH IN ANY PORTION SHOULD BE LESS THAN 0.20mm MAX.
 5. UNLESS OTHERWISE SPECIFIED INNER R0.2 MAX
 6. DRAFT ANGLE 3°MAX

3	PLASTIC BOBBIN	HI P.S	WHITE
2	COVER TAPE	PET ANTISTATIC	21.3m
1	CARRIER (EMBOSSED) TAPE	PET ANTISTATIC	
NO.	DESCRIPTION	MATERIAL	REMARK

PULL OUT DIRECTION



PULL OUT DIRECTION



PLASTIC BOBBIN

RELEASED
 EC NO: KOR2012-0059
 DRWN: JHPARK01 2011/12/20
 CHKD:
 APPR: YUNSIKKIM 2011/12/29

QUALITY SYMBOLS
 ▽=0
 ∇=0

GENERAL TOLERANCES (UNLESS SPECIFIED)

	mm	INCH
4 PLACES	± ---	± ---
3 PLACES	± ---	± ---
2 PLACES	± ---	± ---
1 PLACE	± 0.25	± ---
ANGULAR ± 3 °		

DRAFT WHERE APPLICABLE
 MUST REMAIN
 WITHIN DIMENSIONS

DIMENSION STYLE
 MM ONLY

DRAWN BY	DATE
DATE	DATE
DATE	DATE
DATE	DATE

APPROVED BY
 YUNSIKKIM 2011/12/29

MATERIAL NO.
 1041300510

SCALE
 DESIGN UNITS
 METRIC

THIRD ANGLE PROJECTION

EMBOSSED PACKAGE
 1.25 WIRE TO BOARD CONN.
 HEADER ASS'Y-5P

MOLEX INCORPORATED

DOCUMENT NO.
 SD-104130-004

SHEET NO.
 1 OF 1

THIS DRAWING CONTAINS INFORMATION THAT IS PROPRIETARY TO MOLEX INCORPORATED AND SHOULD NOT BE USED WITHOUT WRITTEN PERMISSION

9 8 7 6 5 4 3 2 1