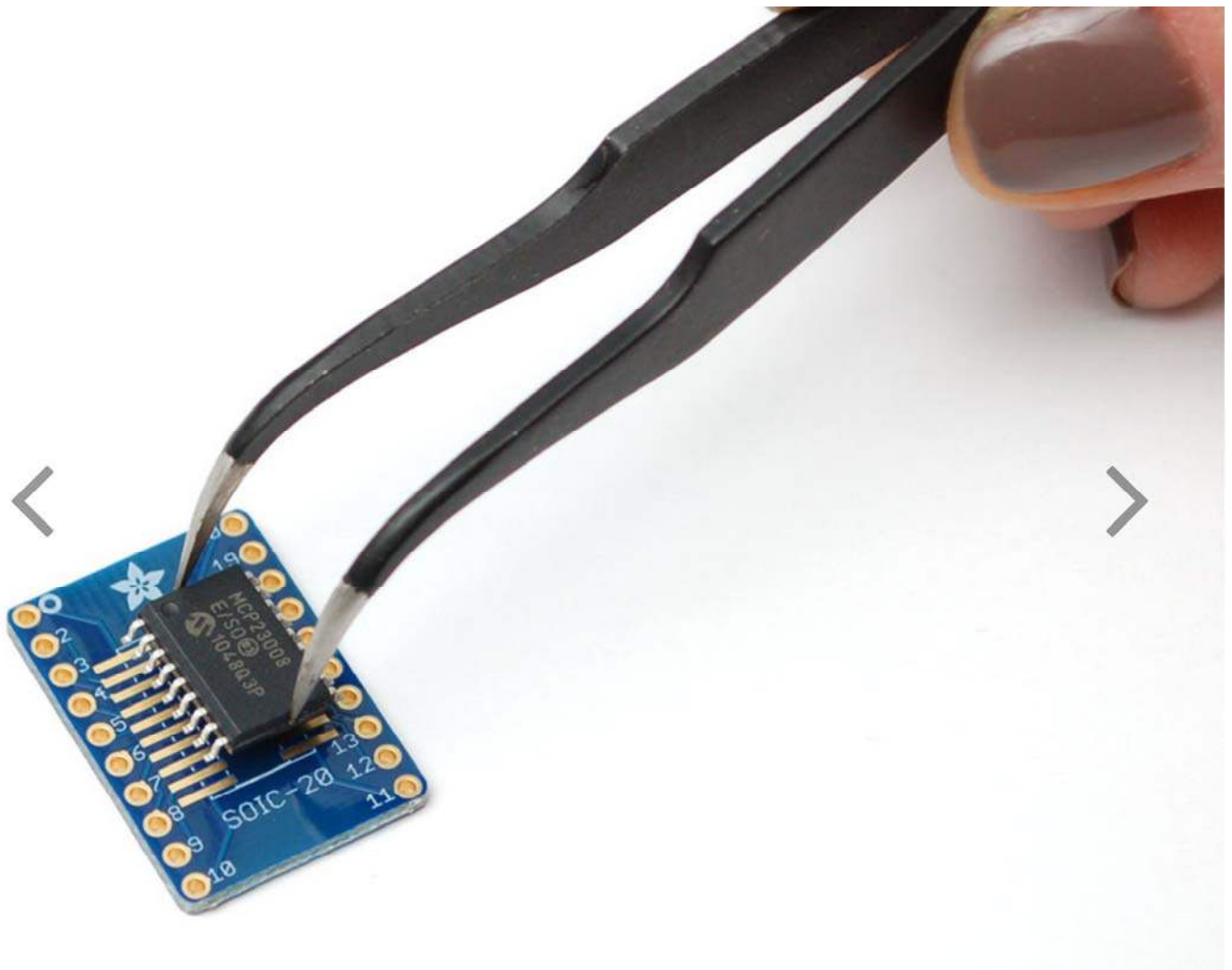


# SMT Breakout PCB for SOIC-20 or TSSOP-20 – 3 Pack!

PRODUCT ID: 1206



---

## DESCRIPTION

Beguiled by a fancy new chip that is only available in a SOIC or (T)SSOP pinout? This breakout PCB set will make your life much much easier and get you prototyping faster than ever. One side has a 20-TSSOP pin out with traces going to two rows of 0.1" spaced holes, the other has 20-SOIC. Solder your chip to either side and you're ready to rock on any solderless breadboard.

Each item comes with three PCBs, each PCB is identical and can support either a SOIC (narrow, medium or wide variety) or TSSOP. Standard thickness PCBs, with 0.6" spacing between the two rows. You can of course use a smaller chip but the pin numbering wont be right so use care.



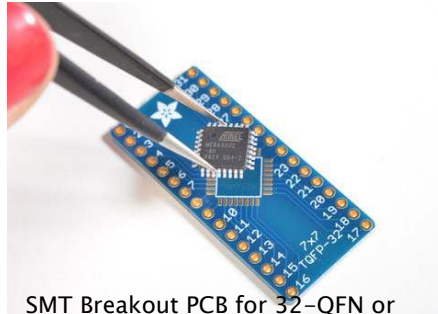
SMT Breakout PCBs for SOIC or TSSOP chips (9:17 ([https://www.youtube.com/watch?feature=player\\_detailpage&v=XNyl7mZ3V1g#t=557](https://www.youtube.com/watch?feature=player_detailpage&v=XNyl7mZ3V1g#t=557)))

---

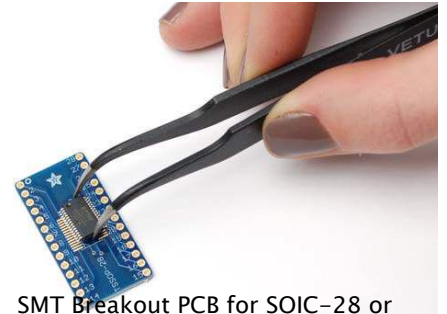
## MAY WE ALSO SUGGEST...



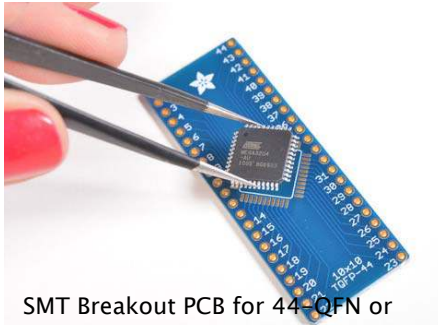
SMT Breakout PCB for SOIC-16 or  
(/products/1207)



SMT Breakout PCB for 32-QFN or  
(/products/1163)



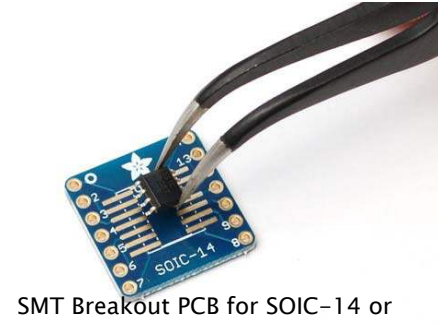
SMT Breakout PCB for SOIC-28 or  
(/products/1208)



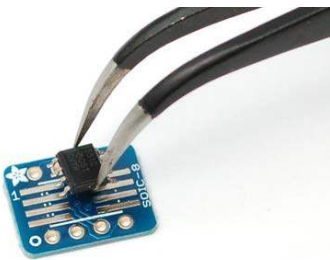
SMT Breakout PCB for 44-QFN or  
(/products/1162)



SMT Breakout PCB for 48-QFN or  
(/products/1377)



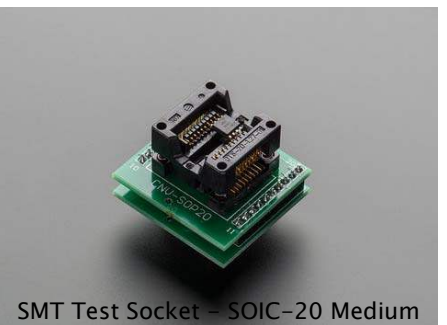
SMT Breakout PCB for SOIC-14 or  
(/products/1210)



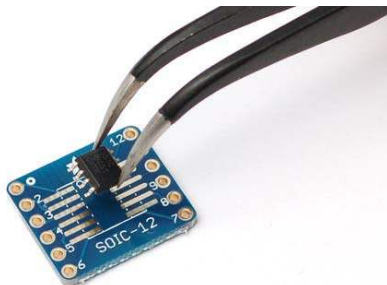
SMT Breakout PCB for SOIC-8,  
(/products/1212)



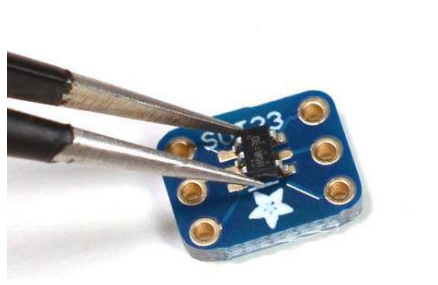
SMT Test Socket - TSSOP-28  
(/products/1280)



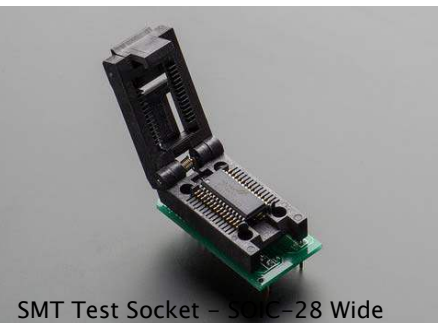
SMT Test Socket - SOIC-20 Medium  
(/products/1282)



SMT Breakout PCB for SOIC-12 or  
(/products/1211)



SMT Breakout PCB Set For SOT-23,  
(/products/1230)



SMT Test Socket - SOIC-28 Wide  
(/products/1281)

+

*"It is the fate of manufactured goods to slowly and gently depreciate as they get old... but it is the fate of operating systems to become free"*

– Neal Stephenson (<http://www.nealstephenson.com/>)



(<https://verify.authorize.net/anetsepid=1de2c247-f7e6-492b-99d8-fb648be79ff1&rurl=http%3A/www.adafruit.com/product/1206>)  
Online Payments  
(<http://www.authorize.net/>)

ENGINEERED IN NYC  
([HTTP://NYTM.ORG/MADE-IN-NYC/](http://nytm.org/made-in-nyc/)) Adafruit ®