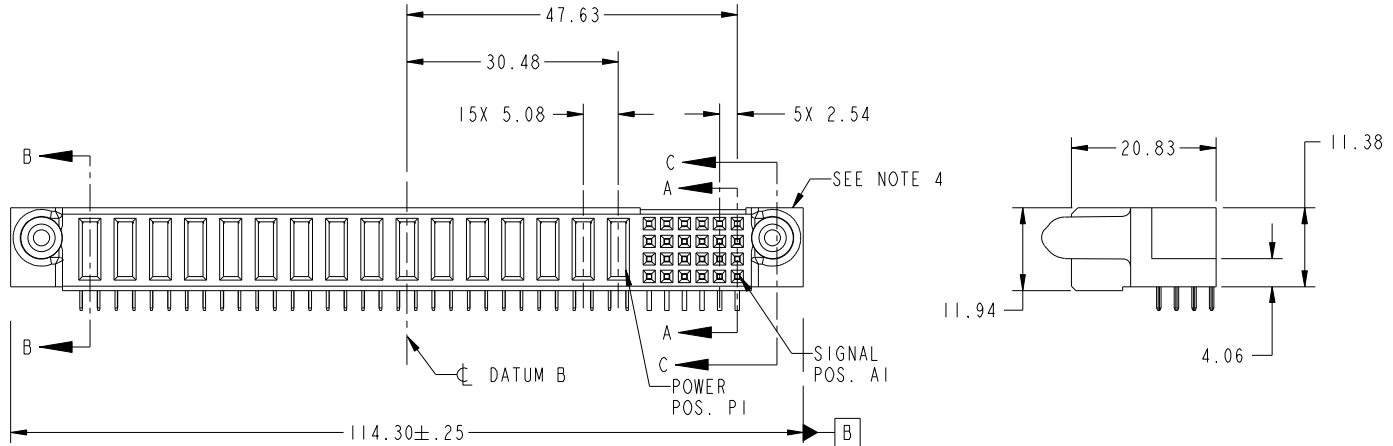
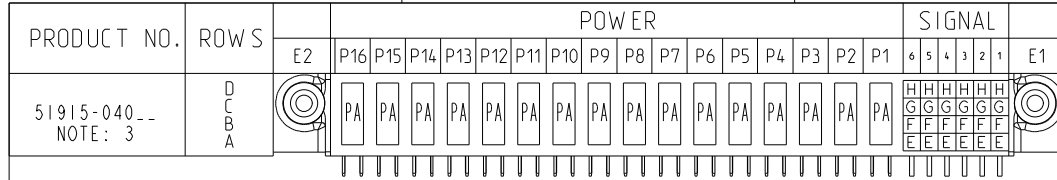


Tous droits strictement réservés. Reproduction ou communication a des tiers interdite sous quelque forme que ce soit sans autorisation écrite du propriétaire. Propriété de c FCI. Droits de reproduction FCI.



All rights strictly reserved. Reproduction or issue to third parties in any form whatever is not permitted without written authority from the proprietor. Property of FCI. Copyright FCI.



| CODE | DIM "M" MATING LENGTH | CONTACT TYPE |
|------|-----------------------|--------------|
| E    | [N/A]                 | SIGNAL       |
| F    | [N/A]                 | SIGNAL       |
| G    | [N/A]                 | SIGNAL       |
| H    | [N/A]                 | SIGNAL       |
| PA   | [1.07]                | POWER        |

|             |                |     |          |            |                      |                                       |  |                       |  |
|-------------|----------------|-----|----------|------------|----------------------|---------------------------------------|--|-----------------------|--|
| mat'l code  |                |     |          | SEE NOTE 2 |                      | tolerances unless otherwise specified |  | CUSTOMER              |  |
| ltr         | ecn no.        | dr  | date     | linear     | 0.X ± 0.5            | COPY                                  |  | FCI                   |  |
| A           | V03-1370       | TAB | 01/07/04 |            | 0.XX ± 0.25          | projection                            |  | www.fciconnect.com    |  |
| B           | DG05-0308      | CS  | 09/01/05 |            | 0.XXX ± 0.10         | MIM                                   |  | title                 |  |
| C           | DG07-0498      | JW  | 09/15/08 | angles     | 0° ± 2°              | scale                                 |  | 24S + 16P             |  |
|             |                |     |          | dr         | T. BRUNGARD 01/07/04 | 1:1                                   |  | R/A SOLDER RECEPTACLE |  |
|             |                |     |          | enr        | M. GRAY 01/07/04     |                                       |  | product family        |  |
|             |                |     |          | chr        | M. GRAY 01/07/04     |                                       |  | PwrBlade              |  |
|             |                |     |          | appd       | M. GRAY 01/07/04     |                                       |  | code                  |  |
| sheet index | revision sheet | C   | C        | C          | C                    |                                       |  | size                  |  |
|             |                | 1   | 2        | 3          | 4                    |                                       |  | dwg no                |  |
|             |                |     |          |            |                      |                                       |  | A                     |  |
|             |                |     |          |            |                      |                                       |  | 51915-040             |  |
|             |                |     |          |            |                      |                                       |  | sheet                 |  |
|             |                |     |          |            |                      |                                       |  | 1 of 4                |  |

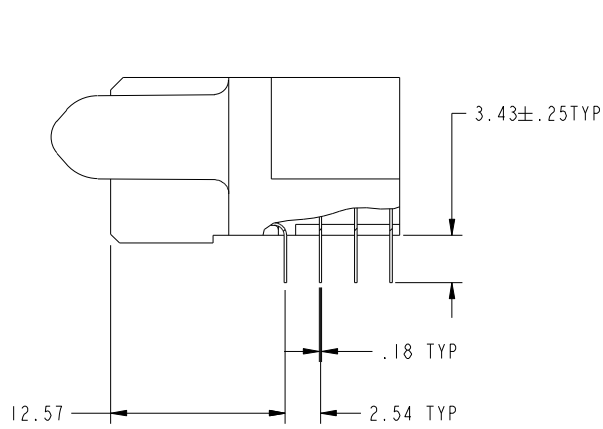
[www.fciconnect.com](http://www.fciconnect.com)  
**24S + 16P**  
**R/A SOLDER RECEPTACLE**  
 product family: PwrBlade code: 213  
 size: A dwg no: 51915-040 sheet: 1 of 4  
 cage code: 22526

Tous droits strictement reserves. Reproduction ou communication a des tiers interdite sous quelque forme que ce soit sans autorisation ecrite du proprietaire. Propriete de c FCI. Droits de reproduction FCI.

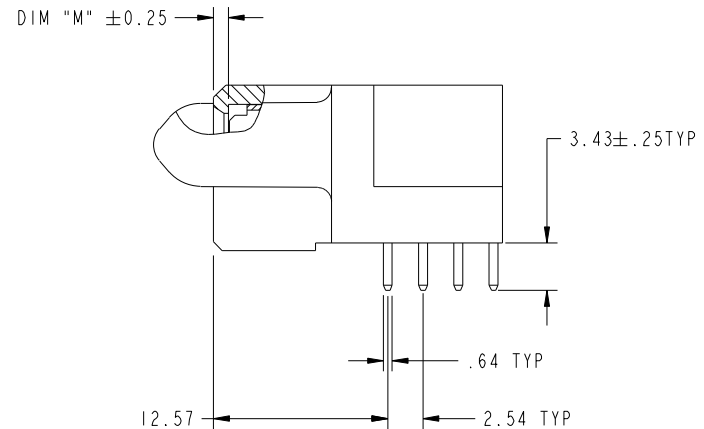


All rights strictly reserved. Reproduction or issue to third parties in any form whatever is not permitted without written authority from the proprietor. Property of FCI. Copyright FCI.

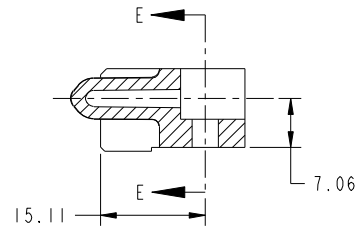
PRODUCT NUMBER  
51915-040--  
NOTE: 3



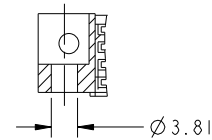
BROKEN-OUT SECTION A-A  
SCALE 2:1



BROKEN-OUT SECTION B-B  
SCALE 2:1



SECTION C-C



PARTIAL SECTION E-E

|             |                |    |      |            |              |                                       |            |          |   |                    |                    |                                     |
|-------------|----------------|----|------|------------|--------------|---------------------------------------|------------|----------|---|--------------------|--------------------|-------------------------------------|
| mat'l code  |                |    |      | SEE NOTE 2 |              | tolerances unless otherwise specified |            | CUSTOMER |   | www.fciconnect.com |                    |                                     |
| ltr         | ecn no.        | dr | date | linear     | 0.X ± 0.5    |                                       | COPY       |          | title<br>24S + 16P<br>R/A SOLDER RECEPTACLE |                    |                    |                                     |
| C           |                |    |      |            | 0.XX ± 0.25  |                                       | projection |          |   |                    |                    | product family PwrBlade code<br>213 |
|             |                |    |      |            | 0.XXX ± 0.10 |                                       |            |          | size<br>A                                   |                    | sheet<br>2         |                                     |
|             |                |    |      | angles     | 0° ± 2°      |                                       |            |          | scale<br>1:1                                |                    | cage code<br>22526 |                                     |
|             |                |    |      | dr         | T. BRUNGARD  | 01/07/04                              |            |          |   |                    |                    |                                     |
|             |                |    |      | enr        | M. GRAY      | 01/07/04                              |            |          |   |                    |                    |                                     |
|             |                |    |      | chr        | M. GRAY      | 01/07/04                              |            |          |   |                    |                    |                                     |
|             |                |    |      | appd       | M. GRAY      | 01/07/04                              |            |          |   |                    |                    |                                     |
| sheet index | revision sheet |    |      |            |              |                                       |            |          |   |                    |                    |                                     |

Pro/E

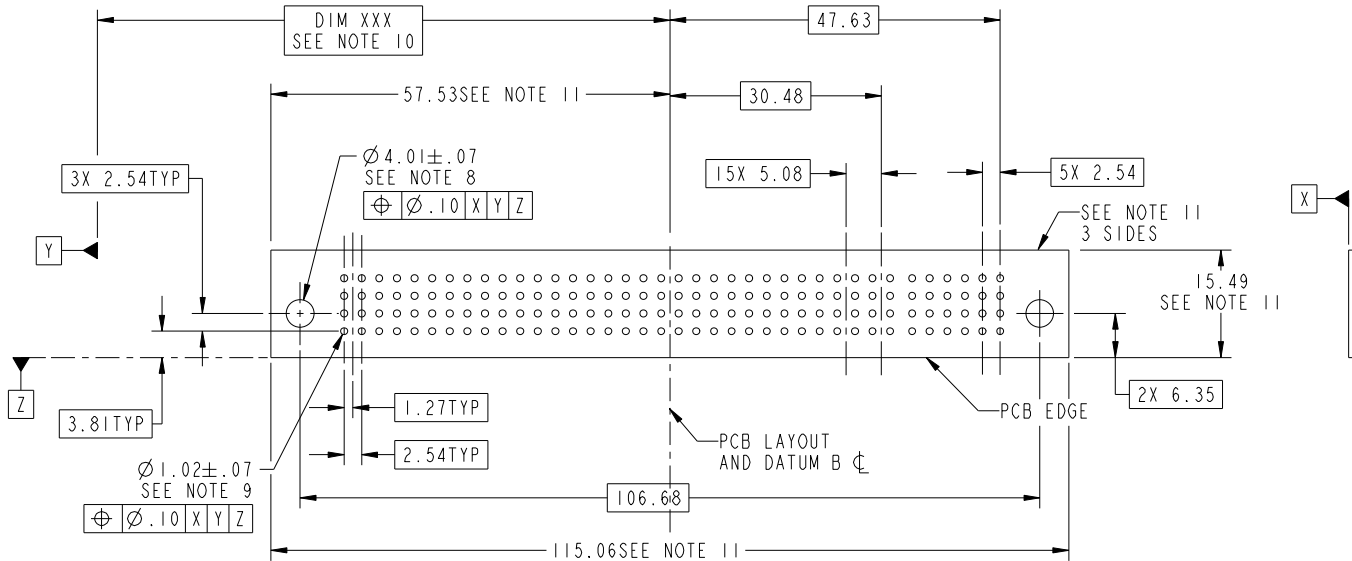
cage code  
22526

Tous droits strictement reserves. Reproduction ou communication a des tiers interdite sous quelque forme que ce soit sans autorisation écrite du propriétaire. Propriete de c FCI. Droits de reproduction FCI.



All rights strictly reserved. Reproduction or issue to third parties in any form whatever is not permitted without written authority from the proprietor. Property of FCI. Copyright FCI.

PRODUCT NUMBER  
51915-040--  
NOTE: 3



|             |                |            |      |                                       |                      |            |  |                |  |                       |       |  |
|-------------|----------------|------------|------|---------------------------------------|----------------------|------------|--|----------------|--|-----------------------|-------|--|
| mat'l code  |                | SEE NOTE 2 |      | tolerances unless otherwise specified |                      | CUSTOMER   |  | FCI            |  | www.fciconnect.com    |       |  |
| ltr         | ecr no.        | dr         | date | linear                                | 0.X ± 0.5            | COPY       |  |                |  | title                 |       |  |
| c           |                |            |      |                                       | 0.XX ± 0.25          | projection |  |                |  | 24S + 16P             |       |  |
|             |                |            |      | angles                                | 0.XXX ± 0.10         |            |  |                |  | R/A SOLDER RECEPTACLE |       |  |
|             |                |            |      | dr                                    | 0° ± 2°              | scale      |  | product family |  | PwrBlade              | code  |  |
|             |                |            |      | enr                                   | T. BRUNGARD 01/07/04 | 1:1        |  | size           |  | A                     | 213   |  |
|             |                |            |      | chr                                   | M. GRAY 01/07/04     |            |  | dwg no         |  | 51915-040             | sheet |  |
|             |                |            |      | appd                                  | M. GRAY 01/07/04     |            |  | sheet          |  | 3                     |       |  |
| sheet index | revision sheet |            |      |                                       |                      |            |  |                |  |                       |       |  |

Pro/E

cage code 22526

Tous droits strictement reserves. Reproduction ou communication a des tiers interdite sous quelque forme que ce soit sans autorisation écrite du propriétaire. Propriete de c FCI. Droits de reproduction FCI.



All rights strictly reserved. Reproduction or issue to third parties in any form whatever is not permitted without written authority from the proprietor. Property of FCI. Copyright FCI.

PRODUCT NUMBER  
51915-040\_-  
NOTE: 3

NOTES:

1. DIMENSIONS AND TOLERANCES ARE IN ACCORDANCE WITH ASME Y14.5M, 1994 UNLESS OTHERWISE SPECIFIED.

CONNECTOR NOTES:

2. HOUSING MATERIAL: UL 94 V-0 GLASS FILLED HIGH-TEMP THERMOPLASTIC  
POWER CONTACT MATERIAL: COPPER ALLOY  
SIGNAL PIN MATERIAL: COPPER ALLOY

3. PLATING:  
SEE ITEM 5 & 6 IN PRINT 10064183 FOR PLATING SPEC OF 51915-040; 51915-040LF PRESPECTIVELY

4. MANUFACTURER'S NAME, P/N, AND DATE CODE TO APPEAR ON THIS SURFACE.

5. PRODUCT SPECIFICATION GS-12-149.  
APPLICATION SPECIFICATION BUS-20-067.

6. PACKAGED IN TRAYS.

PCB NOTES:

7. ALL HOLE DIAMETERS ARE FINISHED HOLE SIZE.

8. MOUNTING HOLES, WHERE APPLICABLE, ARE UNPLATED.

9.  $\varnothing 1.151 \pm 0.025$  DRILLED HOLES PLATED WITH 0.008 MIN SnPb OR Sn OVER 0.03 TO 0.08 Cu PLATING TO ACHIEVE  $\varnothing 1.02 \pm 0.07$  HOLE.

10. "DIM XXX" TO BE DETERMINED BY THE CUSTOMER.

11. CONNECTOR KEEP-OUT ZONE.

12. A  $\triangle$  SYMBOL WILL BE NEXT TO ANY DIMENSION, VIEW, OR NOTE WHICH HAS BEEN MODIFIED WITH THE CURRENT DRAWING REVISION.

|             |         |                |      |            |              |                                       |         |          |            |                                    |  |
|-------------|---------|----------------|------|------------|--------------|---------------------------------------|---------|----------|------------|------------------------------------|--|
| mat'l code  |         |                |      | SEE NOTE 2 |              | tolerances unless otherwise specified |         | CUSTOMER |            | FCI<br>www.fciconnect.com          |  |
| ltr         | ecr no. | dr             | date | linear     | 0.X ± 0.5    |                                       | COPY    |          | projection | title                              |  |
| C           |         |                |      |            | 0.XX ± 0.25  |                                       | MIM     |          |            | 24S + 16P<br>R/A SOLDER RECEPTACLE |  |
|             |         |                |      |            | 0.XXX ± 0.10 |                                       | ← MIM → |          |            | product family PwrBlade code       |  |
|             |         |                |      | angles     | 0° + 2°      |                                       | scale   |          | size       |                                    |  |
|             |         |                |      | dr         | T. BRUNGARD  | 01/07/04                              | 1:1     |          | dwg no     |                                    |  |
|             |         |                |      | enrg       | M. GRAY      | 01/07/04                              | A       |          | 51915-040  |                                    |  |
|             |         |                |      | chr        | M. GRAY      | 01/07/04                              |         |          | sheet      |                                    |  |
|             |         |                |      | appd       | M. GRAY      | 01/07/04                              |         |          | 4          |                                    |  |
| sheet index |         | revision sheet |      |            |              |                                       |         |          |            |                                    |  |

cage code 22526

Pro/E