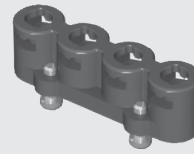




CCH-J-01



CCH-J-04



CCH-J-02

**CCH SERIES**

# HIGH-PERFORMANCE TEST POINTS

**SPECIFICATIONS**

For complete specifications and recommended PCB layouts see [www.samtec.com?CCH](http://www.samtec.com?CCH)

**Insulator Material:**

Black LCP

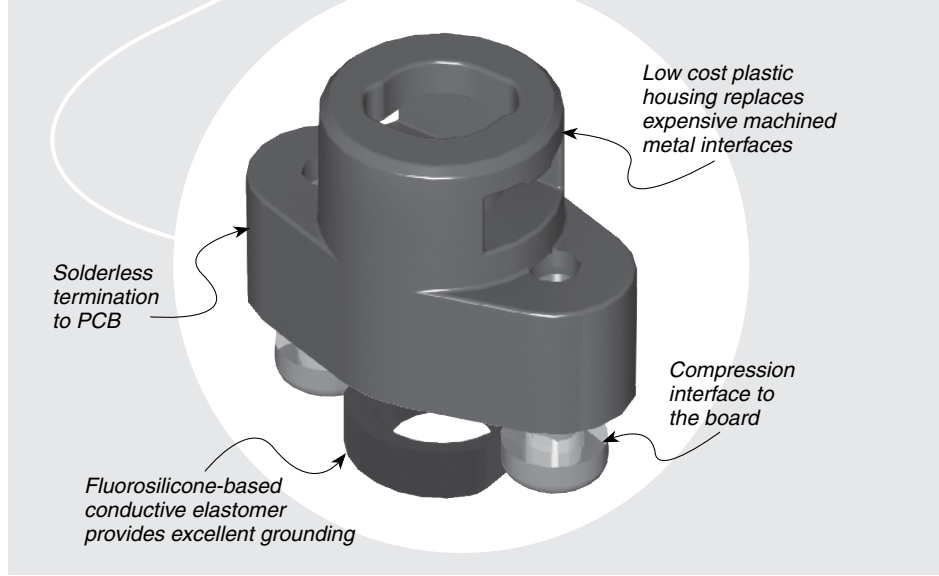
**Gasket Material:**

MIL-DTL-83528C, Type D

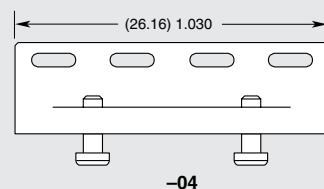
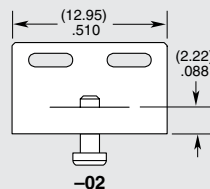
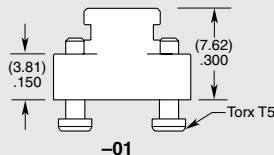
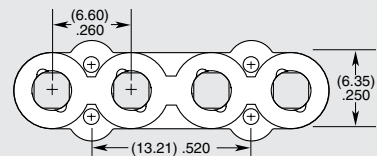
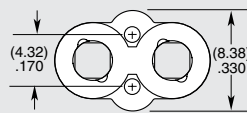
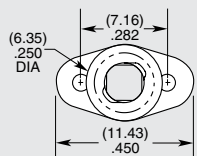
**Mates with:**  
RF25S

**OTHER SOLUTIONS**

- Replacement elastomer gaskets available



TYPE	J	NUMBER OF POSITIONS
<b>CCH</b>		<b>-01</b> = 1 Position
= Single position test point		<b>-02</b> = 2 Positions
		<b>-04</b> = 4 Positions



**Note:**  
Some lengths, styles and options are non-standard, non-returnable.