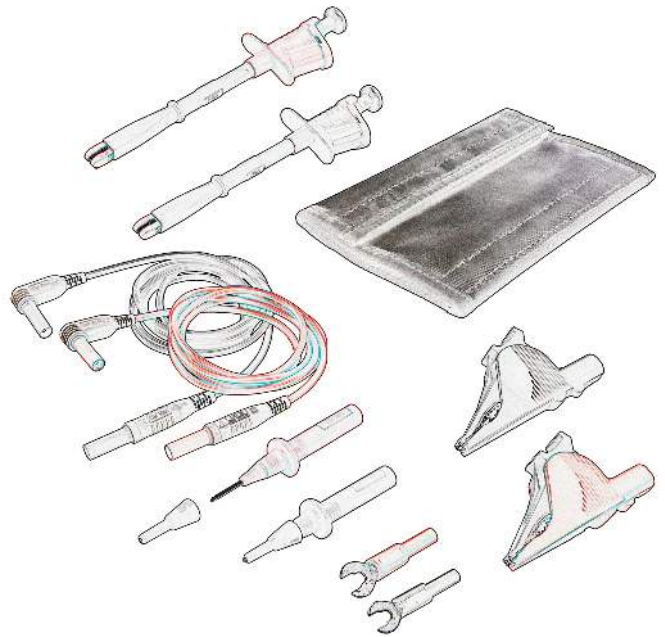


## Cleaning

Use the following guidelines:

- Clean only the exteriors of any probe, cable or adapter. Use a soft cotton cloth moistened with a mild detergent and water solution. Do not allow any portion of the part to be submerged at any time.
- Dry the probe, cable or adapter thoroughly before attempting to make any voltage measurement.
- Do not subject the products to solvents or solvent fumes as these can cause deterioration of the body, cables and/or dielectrics.



Cal Test Electronics, Inc.  
22820 Savi Ranch Pkwy.  
Yorba Linda, CA 92887-4610  
USA  
Tel : 714-221-9330  
Fax : 714-921-9849

E-mail : [info@caltestelectronics.com](mailto:info@caltestelectronics.com)  
Web : [www.caltestelectronics.com](http://www.caltestelectronics.com)

CT2621C\_UserManual\_r01

# CT2621C

Electrical DMM Kit

© 2016 Cal Test Electronics. All rights reserved.

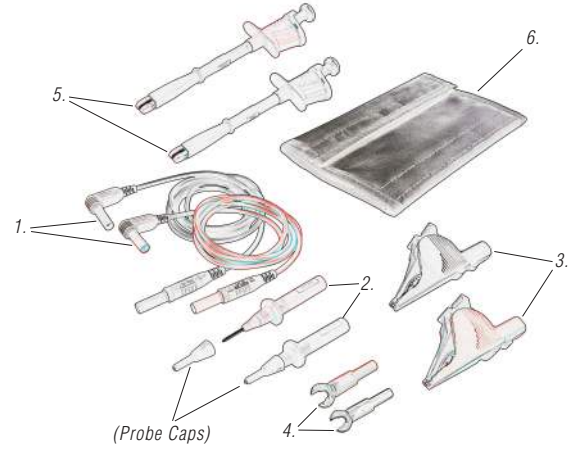
Cal Test Electronics products are covered by US and foreign patents, issued and pending. Information in this publication supersedes all earlier versions. Specification subject to change without notice.

22820 Savi Ranch Pkwy.  
Yorba Linda, California 92887

For product information, sales, service and technical support:

- Call: 714-221-9330
- Email: [info@caltestelectronics.com](mailto:info@caltestelectronics.com)
- Worldwide: <http://www.caltestelectronics.com>

## Kit Components



Item.	Description	Model	Quantity
1.	Silicone Leads, 150cm (60"), B&R	CT3754-150	1
2.	Probes, Fix Tip, 3900 Series, B&R	CT3975	1
3.	Ex-Lg Alligator Clips, B&R	CT3286	1
4.	Adapter, 6mm Spade, B&R	CT2661	1
5.	Rigid Alligator Clips, B&R	CT2966	1
6.	Tri-Fold Nylon Pouch, Black	CT3041	1

## Specifications [EC Declaration of Conformity]

<b>EN 61010-031:2015</b>	Low Voltage Directive (LVD) 2014/35/EU	<b>CE</b>
--------------------------	--	-----------

Max. Operating Temp ..... -20° to +80° C  
 Humidity ..... 85% RH or less (at 35° C)

Item	Description	Voltage Range	Current Max.
1.	Silicone Leads	1000 V CAT III	10 A
2.	Probe Bodies	*1000 V CAT III / 600 V CAT IV	10 A
3.	Ex-Lg Alligator Clips	1000 V CAT III / 600 V CAT IV	36 A
4.	Adapter, 6mm Spade	<30 VAC / <60 VDC	36 A
5.	Rigid Alligator Clips	1000 V CAT III	20 A

\*Rating applies with Cap. Without Cap, 1000 V CAT II



**WARNING.** The measurement category of a combination probe and clip is the lower of the two.

### Definitions:

**Measurement Category 0 (CAT 0) :** circuits that are not directly connected to mains. Examples are automobiles or other battery operated circuits or devices.

**Measurement Category II (CAT II) :** applicable to circuits connected directly to socket outlets of the low-voltage mains. Examples are consumer appliances, power tools, or the consumer side of socket outlets.

Typical short circuit currents: <10 kA

**Measurement Category III (CAT III) :** applicable to circuits connected to the distribution part of a building's low-voltage mains. Examples are power distribution boards, solar cell power assemblies, circuit boxes, circuit breakers, switches and industrial equipment.

Typical short circuit currents: >10 kA

**Measurement Category IV (CAT IV) :** applicable to circuits connected at the source of the building's low-voltage mains. Examples are measurements on devices installed before the main fuse or circuit breaker in a building.

Typical short circuit currents: >50 kA

**Pollution Degree 2** refers to an operation environment where normally only dry non-conductive pollution occurs. Temporary conductivity caused by condensation must be expected.

## Warranty

Cal Test Electronics warrants this product for normal use and operation within specification for a period of one (1) year from the date of shipment (accessories and manual not included).

In exercising its warranty, Cal Test Electronics, at its option, will either repair or replace any assembly returned within the warranty period. However, this will be done only if the product is determined by Cal Test Electronics' examination to be defective because of workmanship or materials, and the defect is not caused by misuse, neglect, accident, abnormal conditions of operation, or damaged by attempted repair or modifications by non-authorized facility.

The customer will be responsible for the transportation and insurance charges for the return of products. Cal Test Electronics will return all products under warranty with transportation charges prepaid. (Continental U.S. only.)

This warranty replaces all other warranties, expressed or implied, including, but not limited to, any implied warranty of merchantability, fitness, or adequacy for any particular purpose or use. Cal Test Electronics shall not be liable for any special, incidental or consequential damages, whether in contract or otherwise.



This electronic product is subject to disposal and recycling regulations that vary by country and region. Many countries prohibit the disposal of waste electronics equipment in standard waste receptacles.

Made in Taiwan

## General Safety Information

To avoid personal injury and to prevent fire or damage to the cables or adapter or any product connected to them, review and comply with the following safety precautions.

Use of these cables or adapters or test instrument they are connected to in a manner not specified by the manufacturers may impair protection mechanisms.

### To avoid Personal Injury and Product Damage:

**Connect to properly grounded instruments.** Use only with test instruments having their input connected to earth ground. Do not connect the cables or adapter's ground shells to any point which is at a potential other than earth ground.

**Do not disconnect the cable or adapters from instrument during measurement.** Connect the cable or adapters to the measurement instrument before connecting to the test circuit.

**Do not apply to their inputs any potential that exceeds the maximum rating of the lead or adapters.**

**Do not use if any part is damaged.** All maintenance should be referred to a qualified service personnel only.

**Do not use in wet or explosive atmospheres.**

**For indoor use only.**

## Basic Operation

Model CT2621C is a general purpose accessory kit for electrical work with a digital multimeter.

## Symbols and Terms

These terms may appear in this manual:



**WARNING.** Warning statements identify conditions or practices that could result in injury or loss of life.



**CAUTION.** Caution statements identify conditions or practices that could result in damage to this product or other property.

The following symbols may appear on the product:



**DANGER**  
High Voltage



**ATTENTION**  
Refer to Manual



**DOUBLE**  
**INSULATION**



**Protective**  
**(EARTH) TERMINAL**