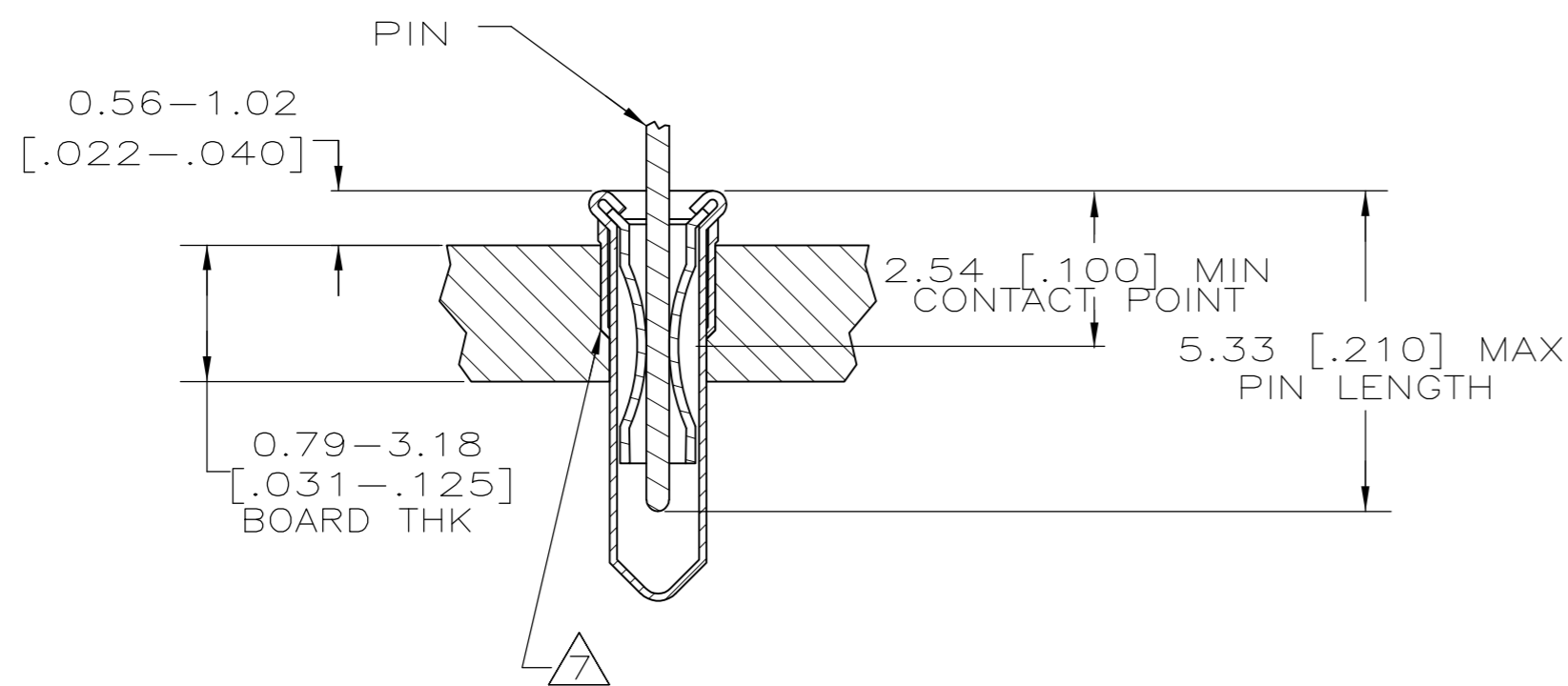
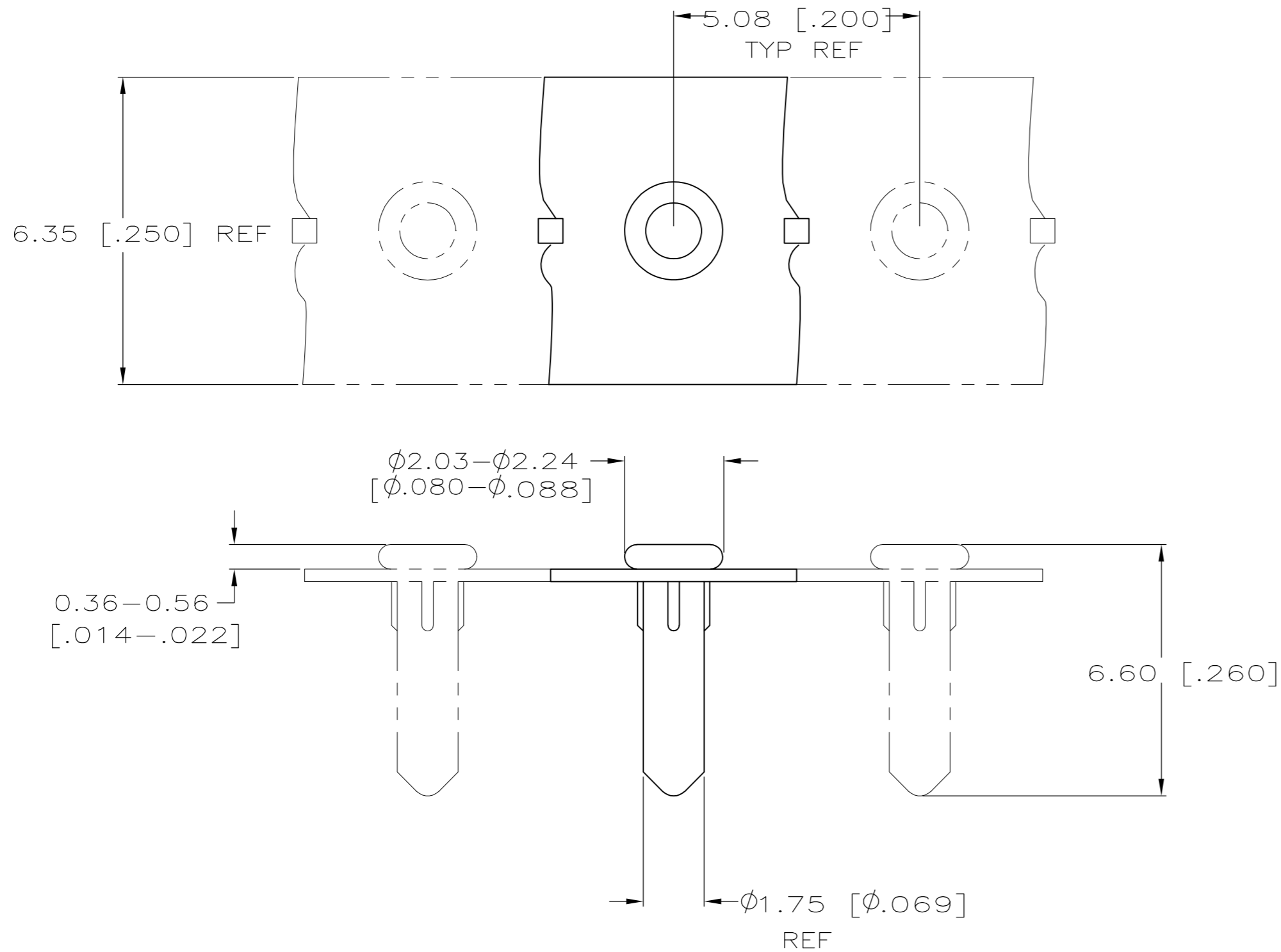


THIS DRAWING IS UNPUBLISHED. RELEASED FOR PUBLICATION
 © COPYRIGHT - By - ALL RIGHTS RESERVED.

LOC		DIST		REVISIONS			
P	LTR	DESCRIPTION		DATE	DWN	APVD	
AG	53	B1	REV PER ECO-14-003120	07MAR2014	AP	AS	



- 1 MATERIAL:
EYELET- COPPER PER ASTM B 152.
SPRING- BERYLLIUM-COPPER PER ASTM B 194.
- 2 TIN PLATE PER ASTM B 545, 0.00254 [.000100]
MINIMUM THICKNESS.
- 3 NICKEL UNDERPLATE ALL OVER, MATING SURFACE PLATED
TO MEET PERFORMANCE REQUIREMENTS OF TYCO PRODUCT
SPECIFICATION 108-14008.
- 4 PACKAGE 50,000 PER REEL.
- 5 PACKAGE 10,000 PER REEL.
- 6 TO ENSURE 1/2 OZ MIN RETENTION, DO NOT
NOT EXCEED 0.50 [.002] DIFFERENCE IN PIN DIA
WHEN CHANGING TO A SMALLER DIA PIN.
- 7 SHOULDER ON SOCKET PROVIDES RETENTION IN THE
P.C. BOARD. THE RECOMMENDED HOLE DIAMETER IS
1.75 [0.069] MINIMUM, + 0.08 [.003] MAXIMUM
PRIOR TO SOLDERING.

5	0.94-1.04 [0.037-0.041]	TIN 2	TIN 2	1-5645502-2
5	0.94-1.04 [0.037-0.041]	GOLD 3	TIN 2	1-5645502-1
4	0.94-1.04 [0.037-0.041]	GOLD 3	TIN 2	5645502-1
PACKAGING	PIN DIA 6	SPRING EYELET FINISH		PART NO

THIS DRAWING IS A CONTROLLED DOCUMENT.		DWN	J. POLIGNONE	26JAN06			TE Connectivity			
DIMENSIONS: mm [INCHES]		CHK	J. HAVENER	26JAN06			NAME		MINIATURE SPRING SOCKET ASSY SERIES 4	
TOLERANCES UNLESS OTHERWISE SPECIFIED:		APVD	J. HAVENER	26JAN06			PRODUCT SPEC		108-14008	
0 PLC ± - 1 PLC ± - 2 PLC ± - 3 PLC ± 0.20[.008] 4 PLC ± - ANGLES ± - FINISH		APPLICATION SPEC		114-26004			SIZE		CAGE CODE	
MATERIAL		SEE TABLE		WEIGHT		A2 00779		DRAWING NO		
1		CUSTOMER DRAWING		SCALE		10:1		SHEET		
						C=5645502		RESTRICTED TO		
						1 OF 1		REV		
						B1				