

SAFETY ORGANIZATION(S)

THIS FILTER HAS BEEN FORMALLY RECOGNIZED, CERTIFIED OR APPROVED BY THE LISTED AGENCY. THEREFORE, ALL TEST/REQUIREMENTS SPECIFIED IN THE LATEST REVISION OF THE FOLLOWING AGENCY STANDARDS HAVE BEEN MET.

UL RECOGNIZED  
 CSA CERTIFIED  
 TUV LICENSED AT 19.5 AMPS

UL 1283  
 CSA 22.2 NO. 0, 0.4, 8  
 VDE 0565-3 (20AYT6C ONLY)

OPERATING SPECIFICATIONS

LINE VOLTAGE/CURRENT:  
 20 OR 30 AMP., 250VAC PHASE/NEUTRAL-GND  
 20 OR 30 AMP., 440VAC PHASE/PHASE  
 50-60HZ

LINE FREQUENCY:  
 MAX. CASE RISE  $\theta$  RATED CURRENT, 40°C  
 MAX. LEAKAGE CURRENT, EACH  
 LINE TO GROUND  
 1.4mA @ 120V 60HZ  
 3.4mA @ 250V 50HZ

OPERATING AMBIENT TEMP. RANGE:  
 -10°C TO +40°C @ RATED CURRENT,  $I_r$

IN AN AMBIENT,  $T_a$ , HIGHER THAN 40°C, THE MAXIMUM OPERATING CURRENT,  $I_o$ , IS AS FOLLOWS:  
 $I_o = I_r \sqrt{\frac{95-T_a}{45}}$

RELIABILITY SPECIFICATIONS

STORAGE TEMPERATURE:  
 -25°C TO +85°C  
 HUMIDITY:  
 21 DAYS @ 40°C 95% RH

TEST SPECIFICATIONS

INDUCTANCE:  
 20A = 7.0mH NOMINAL  
 30A = 3.32mH NOMINAL  
 GROUND CHOKE, .261mH NOMINAL

CAPACITANCE, (MEASURED @ 1 KHZ, 0.25 VAC MAX., 25°C ±1°C)  
 PHASE/NEUTRAL TO GROUND,  
 .026 $\mu$ F ±20%  
 PHASE TO NEUTRAL,  
 4.47 $\mu$ F ±20%  
 DISCHARGE RESISTOR,  
 73.3K OHMS

INSULATION RESISTANCE  
 LINE/GROUND AND LINE/LINE  
 6000 M $\Omega$  (MIN) AT 100 VDC  
 (W/O DISCHARGE RESISTOR)  
 20°C AND 50% RH

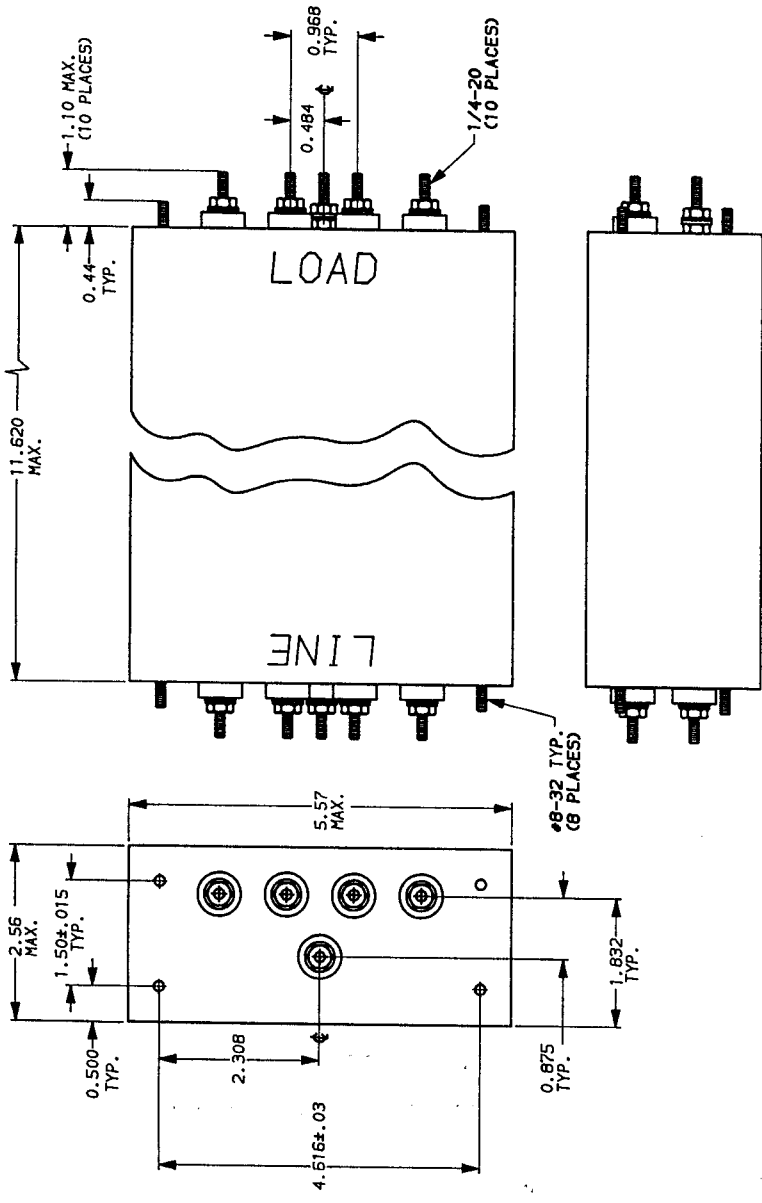
RECOMMENDED RECEIVING INSPECTION HIPOI.  
 PHASE/NEUTRAL TO GROUND,  
 1500 VAC FOR 1 MINUTE  
 PHASE TO NEUTRAL,  
 1450 VDC FOR 1 MINUTE

FILTER APPROVAL  
 THE BEST WAY TO SELECT AND QUALIFY A FILTER IS FOR YOUR ENGINEERING TO TEST THE UNIT IN YOUR EQUIPMENT.



POWER LINE FILTER

SCALE	DATE	DRG. NO.	RE.
NTS	4-25-89	20AYT6C & 30AYT6C	4
DRW. BY	LJD	CFW	

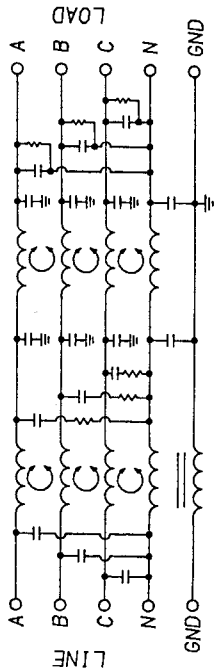


- NOTES:  
 1.) UNLESS OTHERWISE SPECIFIED, TOLERANCE TO BE ±.030  
 2.) LINE SIDE HAS INSULATED GROUND TERMINAL.

NOTE: COMMON MODE A-B-C & N SHORTED TOGETHER.  
 DIFF. MODE MEASURED N TO A-B-C SHORTED TOGETHER.

50 $\Omega$ - 50 $\Omega$ (MINIMUM) INSERTION LOSS	
FREQUENCY MHZ	COMMON
10	0.05
15	0.15
20	0.45
25	0.70
30	0.85
35	1.00
40	1.15
45	1.30
50	1.45
55	1.60
60	1.75
65	1.90
70	2.05
75	2.20
80	2.35
85	2.50
90	2.65
95	2.80
100	2.95

This document is proprietary to CORCOM INC. and is not to be reproduced nor used for manufacturing purposes except on CORCOM's order or prior written consent.



TOLERANCE EXCEPT AS NOTED  
 DECIMAL: .XXX .XX .X ANGLES  
 ENGLISH: ±.025  
 METRIC: ±

MATERIAL: AS SUPPLIED

FINISH: