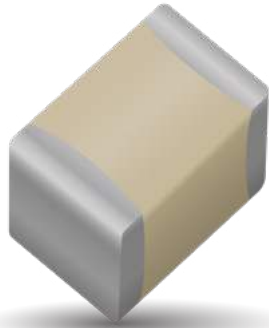


RF/Microwave Capacitors

RF/Microwave Multilayer Capacitors (MLC)

100B Series Porcelain Superchip® Multilayer Capacitors



FEATURES

- Case B Size (.110" x .110")
- Capacitance Range 0.1pF to 1000pF
- Extended WVDC up to 1500 VDC
- Low ESR/ESL
- High Q
- Low Noise
- Ultra-Stable Performance
- High Self-Resonance
- Established Reliability (QPL)

GENERAL DESCRIPTION

KYOCERA AVX, the industry leader, offers new improved ESR/ESL performance for the 100 B Series RF/Microwave Capacitors. This Series is now available with extended operating temperatures up to 175°C. High Density porcelain construction provides a rugged, hermetic package.

FUNCTIONAL APPLICATIONS

- Bypass
- Coupling
- Tuning
- Impedance Matching
- DC Blocking

CIRCUIT APPLICATIONS

- UHF/Microwave RF Power Amplifiers
- Oscillators
- Low Noise Amplifiers
- Filter Networks
- Timing Circuits

ENVIRONMENTAL CHARACTERISTICS

Thermal Shock	Mil-STD-202, Method 107, Condition A
Moisture Resistance	Mil-STD-202, Method 106
Low Voltage Humidity	Mil-STD-202, Method 103, condition A, with 1.5 VDC applied while subjected to an environment of 85°C with 85% relative humidity for 240 hours
Life Test	MIL-STD-202, Method 108, for 2000 hours, at 125°C. Voltage applied. 200% of WVDC for capacitors rated at 500 volts DC or less. 120% of WVDC for capacitors rated at 1250 volts DC or less. 100% of WVDC for capacitors rated above 1250 volts DC
Termination Styles	Available in various surface mount and leaded styles. See Mechanical Configurations
Terminal Strength	Terminations for chips and pellets withstand a pull of 5 lbs. min., 15 lbs. typical, for 5 seconds in direction perpendicular to the termination surface of the capacitor.

PACKAGING OPTIONS



Tape & Reel



Vertical Orientation Tape & Reel



Cap Pac® (100 pcs)



ELECTRICAL SPECIFICATIONS

Temperature Coefficient (TCC)	+90 ±20 PPM/°C (-55°C to +125°C) +90 ±30 PPM/°C (+125°C to +175°C)
Capacitance Range	0.1pF to 1000pF
Operating Temperature	-55°C to +125°C*
Quality Factor	greater than 10,000 at 1 MHz
Insulation Resistance (IR)	0.1 pF to 470 pF: 10 ⁶ Megohms min. @ +25°C at rated WVDC. 10 ⁵ Megohms min. @ +125°C at rated WVDC. 510 pF to 1000 pF: 10 ⁵ Megohms min. @ +25°C at rated WVDC. 10 ⁴ Megohms min. @ +125°C at rated WVDC.
Working Voltage (WVDC)	See Capacitance Values table
Dielectric Withstanding Voltage (DWV)	250% of WVDC for capacitors rated at 500 volts DC or less for 5 seconds. 150% of WVDC for capacitors rated at 1250 volts DC or less for 5 seconds. 120% of WVDC for capacitors rated above 1250 Volts DC for 5 seconds
Aging Effects	None
Piezoelectric Effects	None
Capacitance Drift	± (0.02% or 0.02 pF), whichever is greater
Retrace	Less than ±(0.02% or 0.02 pF), whichever is greater.

RF/Microwave Capacitors

RF/Microwave Multilayer Capacitors (MLC)

100B Series Porcelain Superchip® Multilayer Capacitors



CAPACITANCE VALUES

Cap. Code	Cap. (pF)	Tol.	Rated WVDC		Cap. Code	Cap. (pF)	Tol.	Rated WVDC		Cap. Code	Cap. (pF)	Tol.	Rated WVDC		CAP. CODE	CAP. (pF)	TOL.	RATED WVDC				
			STD.	EXT.				STD.	EXT.				STD.	EXT.				STD.	EXT.	STD.	EXT.	
0R1	0.1	B	500	1500	2R4	2.4	B, C, D	500	1500	200	20	F, G, J, K, M	500	1500	151	150	F, G, J, K, M	300	EXT.			
0R2	0.2				2R7	2.7				220	22				161	160						
0R3	0.3	B, C			EXTENDED VOLTAGE	3R0				3.0	240				24	181				180	VOLT.	
0R4	0.4					3R3				3.3	270				27	201				200		
0R5	0.5	B, C, D				EXTENDED VOLTAGE				3R6	3.6				300	30				221		220
0R6	0.6									3R9	3.9				330	33				241		240
0R7	0.7									4R3	4.3				360	36		271	270			
0R8	0.8									4R7	4.7				390	39		301	300			
0R9	0.9				5R1					5.1	430				43	331		330				
1R0	1.0				5R6					5.6	470				47	361		360				
1R1	1.1	B, C, D			EXTENDED VOLTAGE					6R2	6.2				510	51		391	390	VOLT.		
1R2	1.2									6R8	6.8				560	56		431	430			
1R3	1.3		B, C, J, K, M	EXTENDED VOLTAGE			7R5	7.5	620	62	471	470										
1R4	1.4						8R2	8.2	680	68	511	510										
1R5	1.5						9R1	9.1	750	75	561	560										
1R6	1.6						100	10	820	82	621	620										
1R7	1.7	110				11	910	91	681	680												
1R8	1.8	120				12	101	100	751	750												
1R9	1.9	F, G, J, K, M	EXTENDED VOLTAGE			130	13	111	110	821	820	300										
2R0	2.0					150	15	121	120	911	910											
2R1	2.1					160	16	131	130	102	1000											
2R2	2.2					180	18															

VRMS = 0.707 X WVDC

• SPECIAL VALUES, TOLERANCES, DIFFERENT WVDC AND MATCHING AVAILABLE. • ENCAPSULATION OPTION AVAILABLE. PLEASE CONSULT FACTORY. NOTE: EXTENDED WVDC DOES NOT APPLY TO CDR PRODUCTS.

HOW TO ORDER

Series 100 **Case Size** B **Capacitance** 910 **Termination Style Code** J **Voltage Rating** W **Rated WVDC** 500 **Termination Style Code** X **Packaging** T

See mechanical dimensions below

EIA Capacitance Code in pF.
First two digits = significant figures or "R" for decimal place.
Third digit = number of zeros or after "R" significant figures

Capacitance Tolerance Code

Code	B	C	D	F	G	J	K	M
Tol.	±1 pF	±25 pF	±5 pF	±1%	±2%	±5%	±10%	±20%

Packaging
T = Tape and Reel, 500 pc qty
TV = Vertical Tape and Reel, 500 pc qty
Please see last column of mechanical configuration table for other options.

Laser Marking (Optional)

Voltage Rating

Termination Style Code
Please see 2nd Column Mechanical Configuration Table

The above part number refers to a 100 B Series (case size B) 91 pF capacitor, J tolerance (±5%), 500 WVDC, with W termination (Tin /Lead, Solder Plated over Nickel Barrier), laser marking and Tape and Reel packaging.

RF/Microwave Capacitors

RF/Microwave Multilayer Capacitors (MLC)

100B Series Porcelain Superchip® Multilayer Capacitors



MECHANICAL CONFIGURATION

Series & Case Size	Term. Code	MIL-PRF-55681	Case Size & Type	Outline W/T is a Termination Surface	Body Dimensions inches (mm)			Lead and Termination Dimensions and Material			Pkg Type	Pkg Code			
					Length (L)	Width (W)	Thickness (T)	Overlap (Y)	Materials						
100B	W	CDR14BG	Solder Plate		.110+ .020 - .01 (2.79 + 0.51-0.25)	.110 ±.015 (2.79 ±0.38)	.102 (2.59) max.	.015 (0.38) ±.010 (0.25)	Tin / Lead, Solder Plated over Nickel Barrier Termination		T&R, 1000 or 500 pcs Vertical T&R, 1000 or 500 pcs Cap Pac, 100 pcs	T1K or T TV1K or TV C100			
100B	P	CDR14BG	Pellet		.110+ .035 - .01 (2.79 + 0.89-0.25)	.110 ±.015 (2.79 ±0.38)			Heavy Tin/Lead Coated, over Nickel Barrier Termination		T&R, 1000 or 500 pcs Vertical T&R, 1000 or 500 pcs Cap Pac, 100 pcs	T1K or T TV1K or TV C100			
100B	T	N/A	Solderable Nickel		.110+ .035 - .01 (2.79 + 0.51-0.25)	.110 ±.015 (2.79 ±0.38)			RoHS Compliant Tin Plated over Nickel Barrier Termination		T&R, 1000 or 500 pcs Vertical T&R, 1000 or 500 pcs Cap Pac, 100 pcs	T1K or T TV1K or TV C100			
100B	CA	CDR13BG	Gold Chip		.110+.020 - .010 (2.79 + 0.51-0.25)	.110 ±.015 (2.79 ±0.38)			RoHS Compliant Gold Plated over Nickel Barrier Termination		T&R, 1000 or 500 pcs Vertical T&R, 1000 or 500 pcs Cap Pac, 100 pcs	T1K or T TV1K or TV C100			
100B	MS	CDR21BG	Microstrip		.135 ±.015 (3.43 ±0.38)	.110 ±.015 (2.79 ±0.38)	.120 (3.05) max.	N/A	Length (L _L)	Width (W _L)	Thickness (T _L)	Cap Pac, 20 pcs	C20		
100B	AR	CDR22BG	Axial Ribbon				.250 (6.35) min.		.093±.005 (2.36 ±0.13)	.004 ± .001 (.102±.025)	Box, 20 or 100 pcs		B20 or B100		
100B	RR	CDR24BG	Radial Ribbon				.145 ±.020 (3.68 ±0.51)		.102 (2.59) max.	.500 (12.7)	#26 AWG, .016 (.406) dia. nominal		Box, 20 or 100 pcs		B20 or B100
100B	RW	CDR23BG	Radial Wire								Box, 20 or 100 pcs		B20 or B100		
100B	AW	CDR25BG	Axial Wire		Box, 20 or 100 pcs		B20 or B100								

Additional lead styles available: Narrow Microstrip (NM), Narrow Axial Ribbon (NA) and Vertical Narrow Microstrip (H). Other lead lengths are available; consult factory. All leads are high purity silver attached with high temperature solder and are **RoHS** compliant.

RF/Microwave Capacitors

RF/Microwave Multilayer Capacitors (MLC)

100B Series Porcelain Superchip® Multilayer Capacitors



NON-MAGNETIC MECHANICAL CONFIGURATION

Series & Case Size	Term. Code	MIL-PRF-55681	Case Size & Type	Outline W/T is a Termination Surface	Body Dimensions inches (mm)			Lead and Termination Dimensions and Material			Pkg Type	Pkg Code	
					Length (L)	Width (W)	Thickness (T)	Overlap (Y)	Materials				
100B	WN	Meets Requirements	Non-Mag		.110+ .020 - .01 (2.79 + 0.51-0.25)	.110 ±.015 (2.79 ±0.38)	.102 (2.59) max.	.015 (0.38) ±.010 (0.25)	Tin / Lead, Solder Plated over Nickel Barrier Termination		T&R, 1000 or 500 pcs Vertical T&R, 1000 or 500 pcs Cap Pac, 100 pcs	T1K or T TV1K or TV C100	
100B	PN	Meets Requirements	Solderable Nickel		.110+ .035 - .01 (2.79 + 0.51-0.25)	.110 ±.015 (2.79 ±0.38)			Heavy Tin / Lead, Coated over Non-Magnetic Barrier Termination		T&R, 1000 or 500 pcs Vertical T&R, 1000 or 500 pcs Cap Pac, 100 pcs	T1K or T TV1K or TV C100	
100B	TN	Meets Requirements	Non-Mag Solderable Barrier		.110+.020 - .010 (2.79 + 0.51-0.25)	.110 ±.015 (2.79 ±0.38)			RoHS Compliant Tin Plated over Non-Magnetic Barrier Termination		T&R, 1000 or 500 pcs Vertical T&R, 1000 or 500 pcs Cap Pac, 100 pcs	T1K or T TV1K or TV C100	
100B	MN	Meets Requirements	Microstrip		.135 ±.015 (3.43 ±0.38)	.110 ±.015 (2.79 ±0.38)	.120 (3.05) max.	N/A	Length (L _L)	Width (W _L)	Thickness (T _L)	Cap Pac, 20 pcs	C20
100B	AN	Meets Requirements	Axial Ribbon						.250 (6.35) (6.35) min.	.093±.005 (2.36 ±0.13)	.004 ± .001 (.102±.025)	Box, 20 or 100 pcs	B20 or B100
100B	FN	Meets Requirements	Radial Ribbon						.145 ±.020 (3.68 ±0.51)	.102 (2.59) max.	N/A	.500 (12.7)	#26 AWG., .016 (.406) dia. nominal
100B	RN	Meets Requirements	Radial Wire		Box, 20 or 100 pcs	B20 or B100							
100B	BN	Meets Requirements	Axial Wire							Box, 20 or 100 pcs	B20 or B100		

Additional lead styles available: Narrow Microstrip (NM), Narrow Axial Ribbon (NA) and Vertical Narrow Microstrip (H). Other lead lengths are available; consult factory. All leads are high purity silver attached with high temperature solder and are **RoHS** compliant.

RF/Microwave Capacitors

RF/Microwave Multilayer Capacitors (MLC)

100B Series Porcelain Superchip® Multilayer Capacitors



SUGGESTED MOUNTING PAD DIMENSIONS

Horizontal
Electrode Orientation

Vertical
Electrode Orientation

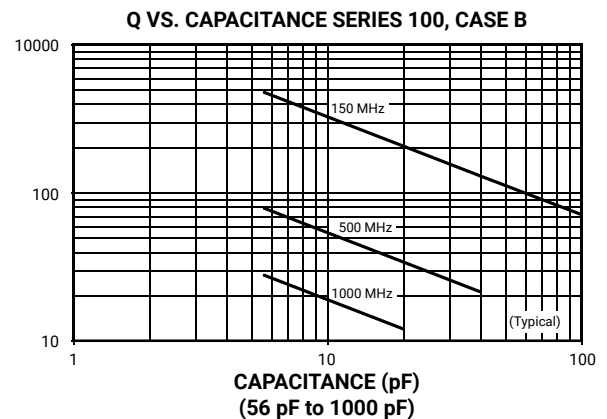
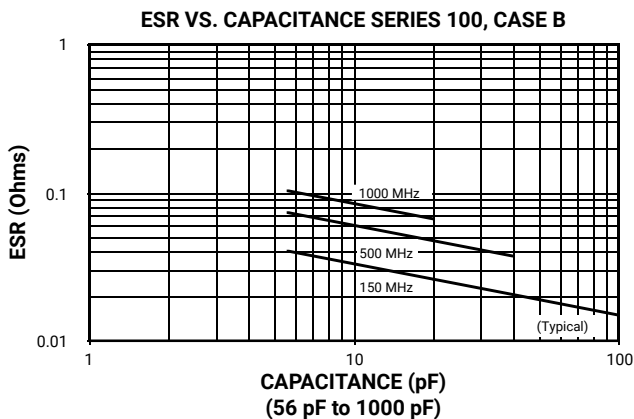
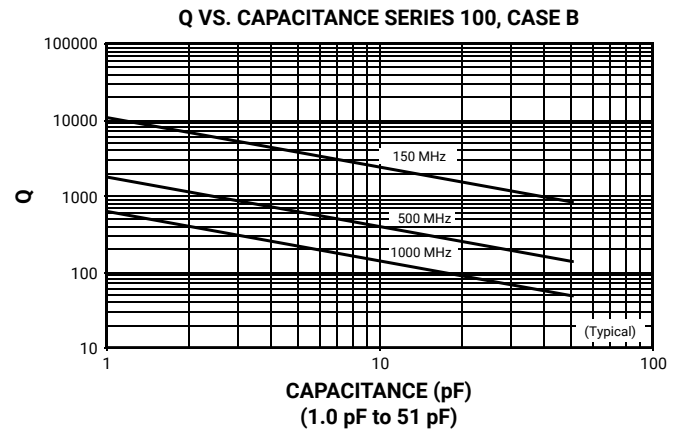
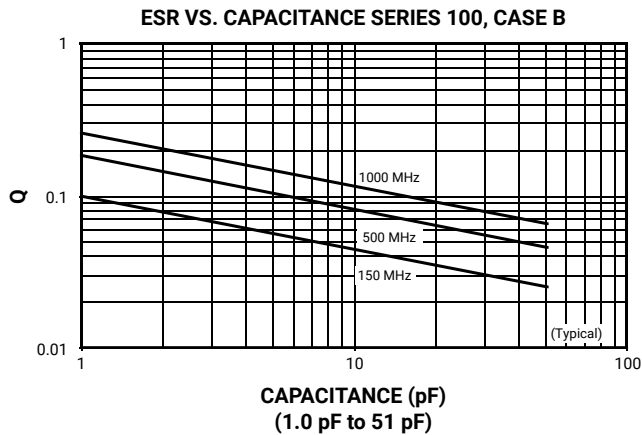
Case B Vertical Mount

Cap Value	Pad Size	A Min.	B Min.	C Min.	D Min.
0.1 pF	Normal	.065	.050	.075	.175
	High Density	.045	.030	.075	.135
0.2 pF	Normal	.090	.050	.075	.175
	High Density	.070	.030	.075	.135
0.3 to 510 pF	Normal	.110	.050	.075	.175
	High Density	.090	.030	.075	.135
> 510 pF	Normal	.120	.050	.075	.175
	High Density	.100	.030	.075	.135

Horizontal Mount

All Values	Normal	.130	.050	.075	.175
	High Density	.110	.030	.075	.135

PERFORMANCE DATA



RF/Microwave Capacitors

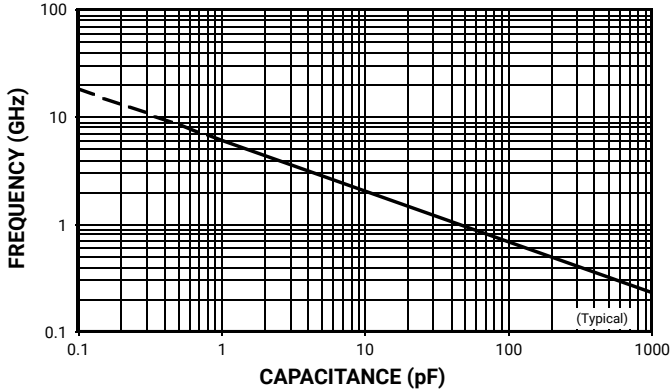
RF/Microwave Multilayer Capacitors (MLC)

100B Series Porcelain Superchip® Multilayer Capacitors

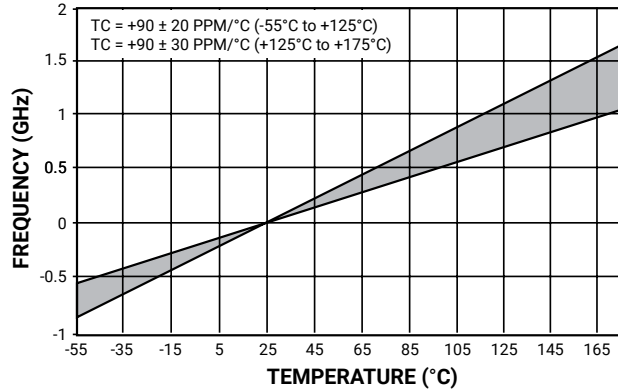


PERFORMANCE DATA

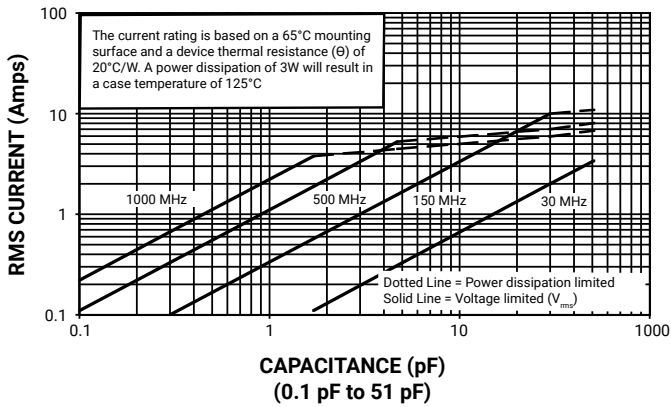
SERIES RESONANCE VS. CAPACITANCE
SERIES 100, CASE B



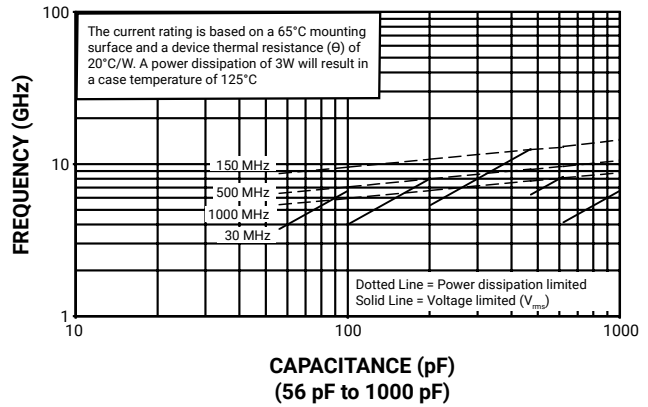
CAPACITANCE CHANGE VS. TEMPERATURE
SERIES 100, CASE B



CURRENT RATING VS. CAPACITANCE
SERIES 100, CASE B



CURRENT RATING VS. CAPACITANCE
SERIES 100, CASE B



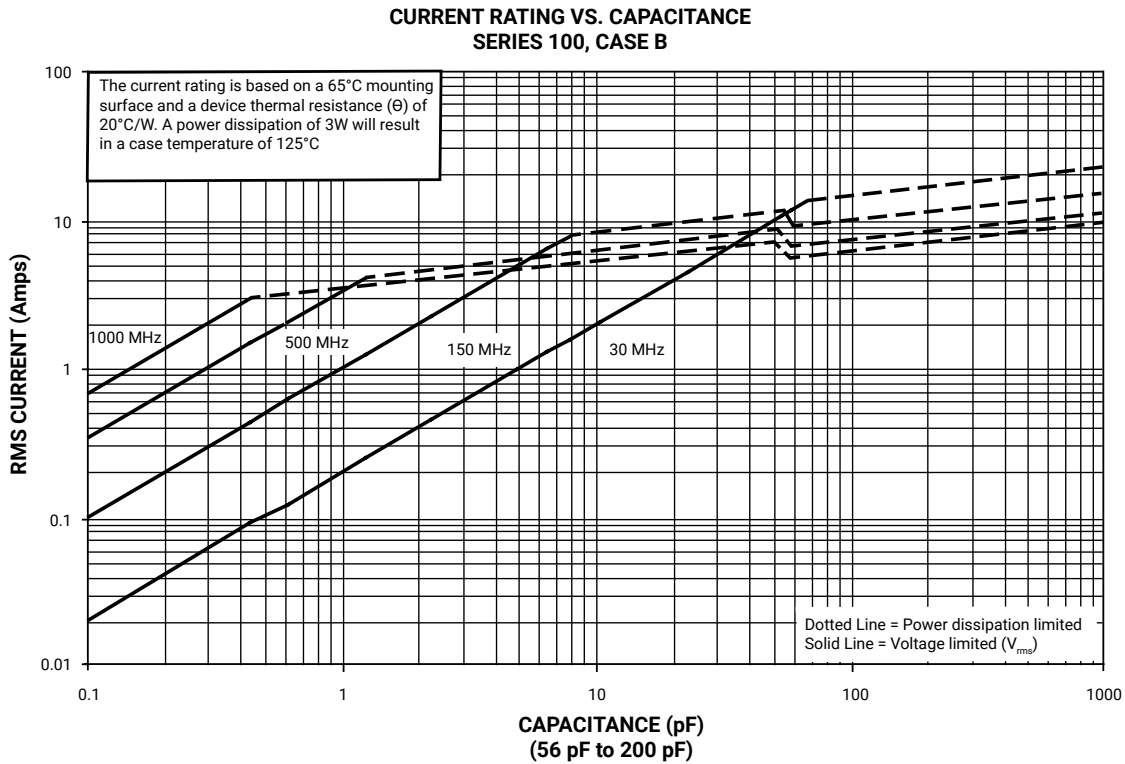
RF/Microwave Capacitors

RF/Microwave Multilayer Capacitors (MLC)

100B Series Porcelain Superchip® Multilayer Capacitors



PERFORMANCE DATA



DESIGN KITS

Kit #	RoHS Compliant	Item #	Description	Cap. Value Range (pF)	Cap. Value (pF)	Tol. (pF)	Price
Kit 9		DK0009	100B Porcelain Superchip®, 16 different values, 15 pcs. min. per value	0.1 to 2.0	10, 12, 15, 18, 20, 22, 24, 27, 30, 33, 39, 47, 56, 68, 82, 100	±5%	\$180.00
Kit 9T		DK0009T					
Kit 10		DK0010	100B Porcelain Superchip®, 16 different values, 15 pcs. min. per value	10 to 27	100, 120, 150, 180, 200, 220, 240, 270, 300, 330, 390, 470	±5%	\$180.00
Kit 10T		DK0010T					

For Online Kit Orders, Catalog & Application Notes, Visit: www.avx.com



The Important Information/Disclaimer is incorporated in the catalog where these specifications came from or available online at www.kyocera-avx.com/disclaimer/ by reference and should be reviewed in full before placing any order.