


WT-RJ 12-S/FM A/K AP

Order No.: 2809186



<http://eshop.phoenixcontact.de/phoenix/treeViewClick.do?UID=2809186>

RJ12 outlet box, surface-mounted, with surge protection for analog telecommunications interfaces

Commercial data	
GTIN (EAN)	 4 017918 076269
sales group	J413
Pack	1 pcs.
Customs tariff	85363010
Catalog page information	Page 155 (TT-2009)

Product notes

WEEE/RoHS-compliant since:
06/29/2006



<http://www.download.phoenixcontact.com>
Please note that the data given here has been taken from the online catalog. For comprehensive information and data, please refer to the user documentation. The General Terms and Conditions of Use apply to Internet downloads.

Technical data

General	
Housing material	ABS
Color	cream white
Standards for air and creepage distances	VDE 0110-1
	IEC 60664-1: 1992-10
Total surge current (8/20) μ s	10 kA

Ambient temperature (operation)	-40 °C ... 80 °C
Mounting type	Surface/Wall mounting
Design	Socket for surface mounting
Degree of protection	IP20
Direction of action	Line-Line & Line-Earth Ground
Width	65.00 mm
Height	80.00 mm
Length	39.00 mm
Protective circuit	
IEC category	C1
	C2
	C3
	D1
VDE requirement class	C1
	C2
	C3
	D1
Maximum continuous voltage U_C (wire-wire)	185 V DC
Nominal current I_N	150 mA (25°C)
Operating effective current I_C at U_C	$\leq 10 \mu\text{A}$
Ground conductor current I_{PE}	$\leq 6 \mu\text{A}$
Nominal discharge surge current I_n (8/20) μs (Core-Core)	2.5 kA
Nominal discharge surge current I_n (8/20) μs (Core-Earth)	2.5 kA
Total surge current (8/20) μs	10 kA
Max. discharge surge current I_{max} (8/20) μs maximum (Core-Earth)	2.5 kA
Output voltage limitation at 1 kV/ μs (Core-Core) spike	$\leq 240 \text{ V}$
Output voltage limitation at 1 kV/ μs (Core-Earth) spike	$\leq 700 \text{ V}$
Output voltage limitation at 1 kV/ μs (Core-Core) static	$\leq 220 \text{ V}$
Output voltage limitation at 1 kV/ μs (Core-Earth) static	$\leq 700 \text{ V}$
Residual voltage at I_n , (conductor-conductor)	$\leq 60 \text{ V}$

Residual voltage at I_n , (conductor-ground)	≤ 60 V
Protection level U_p (Core-Core)	≤ 240 V
Protection level U_p (Core-Earth)	≤ 700 V
Response time t_A (Core-Core)	≤ 10 ns
Response time t_A (Core-Earth)	≤ 100 ns
Input attenuation aE, sym.	0.1 dB (≤ 400 kHz)
Cut-off frequency f_g (3 dB), sym. in 600 Ohm system	Typ. 1.7 MHz
Inductivity in series	39 μ H ± 10 %
Resistance in series	1 Ω
Short-circuit current self-quenching	150 mA
Surge carrying capacity in acc. with IEC 61643-21 (Core-Core)	C1 (1 kV / 500 A)
	C2 (4 kV/2 kA)
	C3 (25 A)
Surge carrying capacity in acc. with IEC 61643-21 (Core-Earth)	C1 (1 kV / 500 A)
	C2 (4 kV / 2 kA)
	C3 (100 A)
	D1 (500 A)

Connection data

Type of connection	Screw connection & RJ12
Connection type IN	Screw terminal blocks
Connection type OUT	RJ12 female connector
Screw thread	M2/M3
Stripping length	5 mm
	6 mm
Conductor cross section stranded min.	0.1 mm ²
Conductor cross section stranded max.	1 mm ²
Conductor cross section solid min.	0.14 mm ²
Conductor cross section solid max.	1.5 mm ²
Conductor cross section AWG/kcmil min.	26
Conductor cross section AWG/kcmil max	16

Connection, equipotential bonding

Conductor cross section stranded min.	0.15 mm ²
---------------------------------------	----------------------

Conductor cross section stranded max.	1.5 mm ²
Conductor cross section solid min.	0.14 mm ²
Conductor cross section solid max.	1.5 mm ²
Conductor cross section AWG/kcmil min.	26
Conductor cross section AWG/kcmil max	16

Connection, protective circuit

Standards/regulations	IEC 61643-21
-----------------------	--------------

Certificates / Approvals

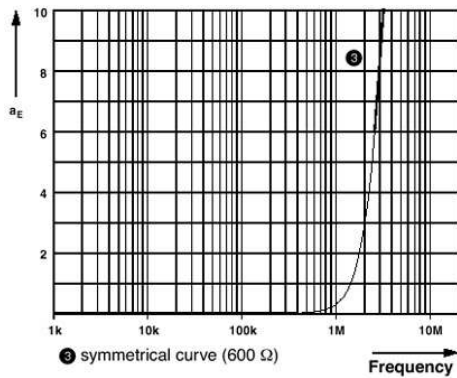


Certification

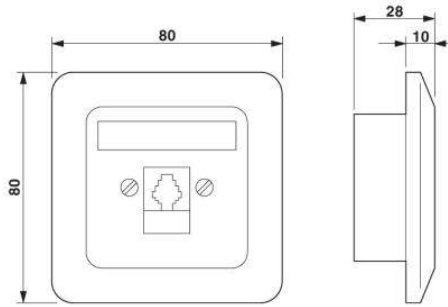
BZT, GOST

Diagrams/Drawings

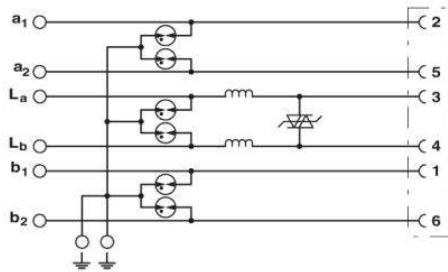
Diagram



Dimensioned drawing



Circuit diagram



Address

PHOENIX CONTACT Deutschland GmbH
Flachmarktstr. 8
32825 Blomberg, Germany
Phone +49 5235 3 12000
Fax +49 5235 3 41200
<http://www.phoenixcontact.de>



© 2011 Phoenix Contact
Technical modifications reserved;