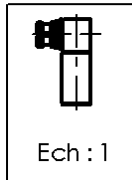
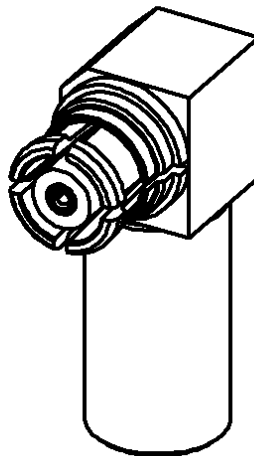
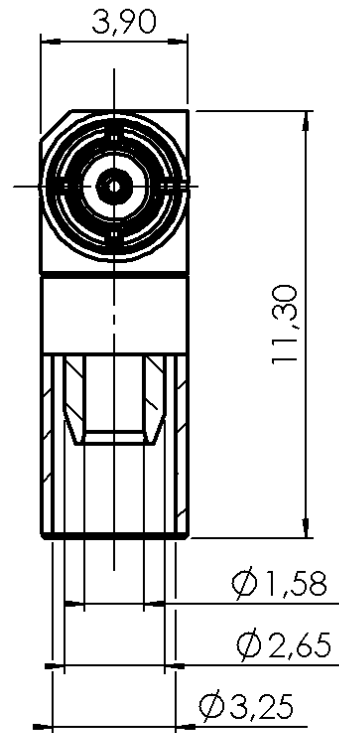
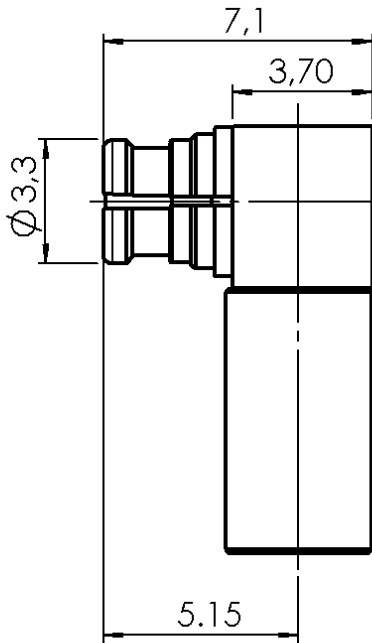


**RIGHT ANGLE PLUG CRIMP TYPE**

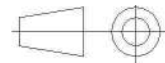
**R222.900.320**

**CABLE 2.6/50 S**

Series : SMP-COM



All dimensions are in mm.



COMPONENTS	MATERIALS	PLATING (µm)
BODY	BRASS	NPGR
CENTER CONTACT	BERYLLIUM COPPER	NPGR
OUTER CONTACT	BERYLLIUM COPPER	NPGR
INSULATOR	PTFE	
GASKET	-	
OTHERS PARTS	BRASS	GOLD 0.2 OVER NICKEL 2
-	-	-
-	-	-

Issue : 0934 A

In the effort to improve our products, we reserve the right to make changes judged to be necessary.



**RIGHT ANGLE PLUG CRIMP TYPE**

**R222.900.320**

**CABLE 2.6/50 S**

Series : SMP-COM

**PACKAGING**

**SPECIFICATION**

Standard	Unit	Other
<b>100</b>	<b>'W' option</b>	<b>Contact us</b>

**ELECTRICAL CHARACTERISTICS**

**ENVIRONMENTAL**

Impedance **50** Ω  
 Frequency **0-12.4\*** GHz  
 VSWR **1.25\*\* + 0,0000** x F(GHz) Maxi  
 Insertion loss **0.12** √F(GHz) dB Maxi  
 RF leakage - ( **55\*\*\*** - F(GHz)) dB Maxi  
 Voltage rating **250** Veff Maxi  
 Dielectric withstanding voltage **750** Veff mini  
 Insulation resistance **5000** MΩ mini

Operating temperature **-55/+125** ° C  
 Hermetic seal **Atm.cm3/s**  
 Panel leakage

**OTHER CHARACTERISTICS**

Assembly instruction **Crimp 05**

Others :  
 \*ROS 1.7 at 12.4GHz  
 \*\*ROS at 6GHz  
 \*\*\*RF Leakage : -40dB min 3<F<6GHz

**MECHANICAL CHARACTERISTICS**

Center contact retention  
 Axial force – Mating end **6.8** N mini  
 Axial force – Opposite end **6.8** N mini  
 Torque **NA** N.cm mini

Recommended torque  
 Mating **N.cm**  
 Panel nut **N.cm**

Mating life **100** Cycles mini  
 Weight **0,8432** g

Issue : 0934 A

In the effort to improve our products, we reserve the right to make changes judged to be necessary.

