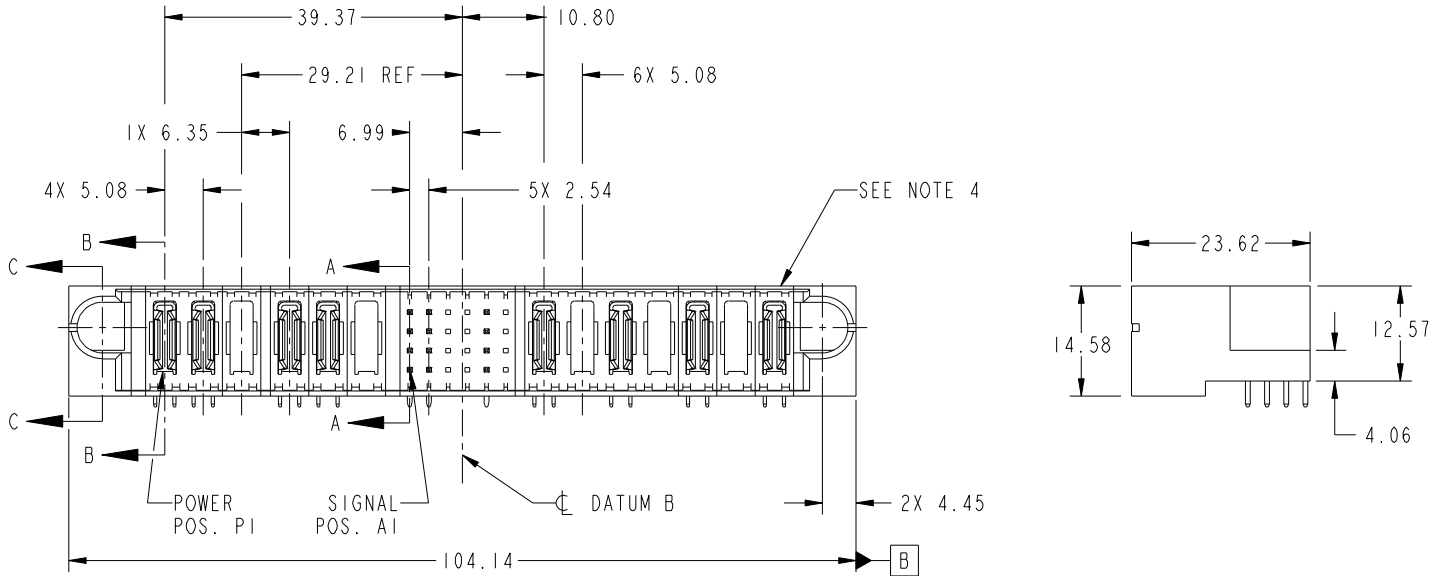


Tous droits strictement réservés. Reproduction ou communication a des tiers interdite sous quelque forme que ce soit sans autorisation écrite du propriétaire. Propriété de c.FCI. Droits de reproduction FCI.

All rights strictly reserved. Reproduction or issue to third parties in any form whatever is not permitted without written authority from the proprietor. Property of FCI. Copyright FCI.



PRODUCT NO. 51939-371-- NOTE 3	ROWS D C B A	POWER						SIGNAL						POWER						E2				
		E1	P1	P2	P3	P4	P5	P6	1	2	3	4	5	6	P7	P8	P9	P10	P11		P12	P13		
			PA	PA	X	PA	PA	X	UU	XX	XX	XX	TT	XX	TT	XX	PA	X	PA	X	PA	X	PA	
			U	U	U	U	U	U	U	U	U	U	U	U	U	U	U	U	U	U	U	U	U	



CODE	DIM "M" MATING LENGTH	CONTACT TYPE
U	[6.86]	SIGNAL
T	[6.86]	SIGNAL
S	[6.86]	SIGNAL
R	[6.86]	SIGNAL
PA	[N/A]	POWER
X	OMITTED	

mat'l code				SEE NOTE		tolerances unless otherwise specified		CUSTOMER		 www.fciconnect.com	
lir	ecn no.	dr	date	linear	0.X ±0.5		COPY		title		
A	DG08-0212	W D	08/08/08		0.XX ±0.25		projection		6P + 24S + 7P		
					0.XXX ±0.10				RIGHT ANGLE SOLDER HEADER		
				angles	0° ±2°		 MM		product family		code
					dr Warren Du 07/09/08		scale		PwrBlade		213
					enr Warren Du 07/09/08		1:1		size dwg no		sheet
					chr Gary Hsieh 07/09/08				A 51939-371		1 of 4
				appd Joseph Hsia 07/09/08							
sheet index	revision sheet	A 1	A 2	A 3	A 4						

B

B

1 | 2

Pro/E

PDM: Rev: A

STATUS: Released

Printed: Dec 20, 2010

cage code 2856

4

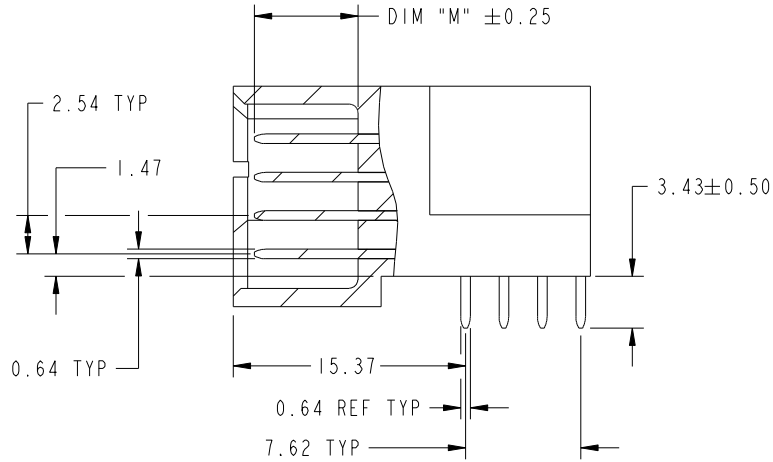
Tous droits strictement réservés. Reproduction ou communication a des tiers interdite sous quelque forme que ce soit sans autorisation écrite du propriétaire. Propriété de c.FCI. Droits de reproduction FCI.

All rights strictly reserved. Reproduction or issue to third parties in any form whatever is not permitted without written authority from the proprietor. Property of FCI. Copyright FCI.

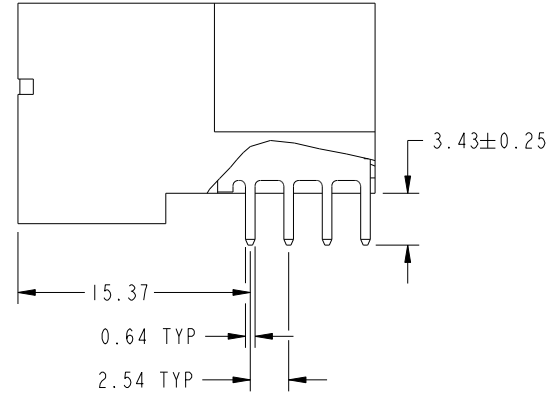


PRODUCT NUMBER

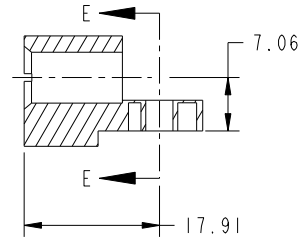
51939-371...  
NOTE: 3



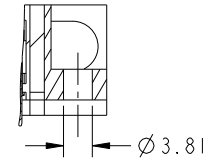
BROKEN-OUT SECTION A-A  
SCALE 2:1



BROKEN-OUT SECTION B-B  
SCALE 2:1



SECTION C-C



PARTIAL SECTION E-E

mat'l code				SEE NOTE		tolerances unless otherwise specified		CUSTOMER		 www.fciconnect.com	
lfr	ecn no.	dr	date	linear	0.X ±0.5	COPY		projection		title	
A					0.XX ±0.25					6P + 24S + 7P RIGHT ANGLE SOLDER HEADER	
				angles	0.XXX ±0.10					product family	
				dr	0° ±2°			MM		PwrBlade	
				enr	Warren Du 07/09/08			scale		code	
				chr	Warren Du 07/09/08			1:1		213	
				appd	Gary Hsieh 07/09/08			A		sheet	
					Joseph Hsia 07/09/08			51939-371		2 of 4	
sheet index	revision sheet										

cage code 2856

Pro/E

PDM: Rev: A

STATUS: Released

Printed: Dec 20, 2010

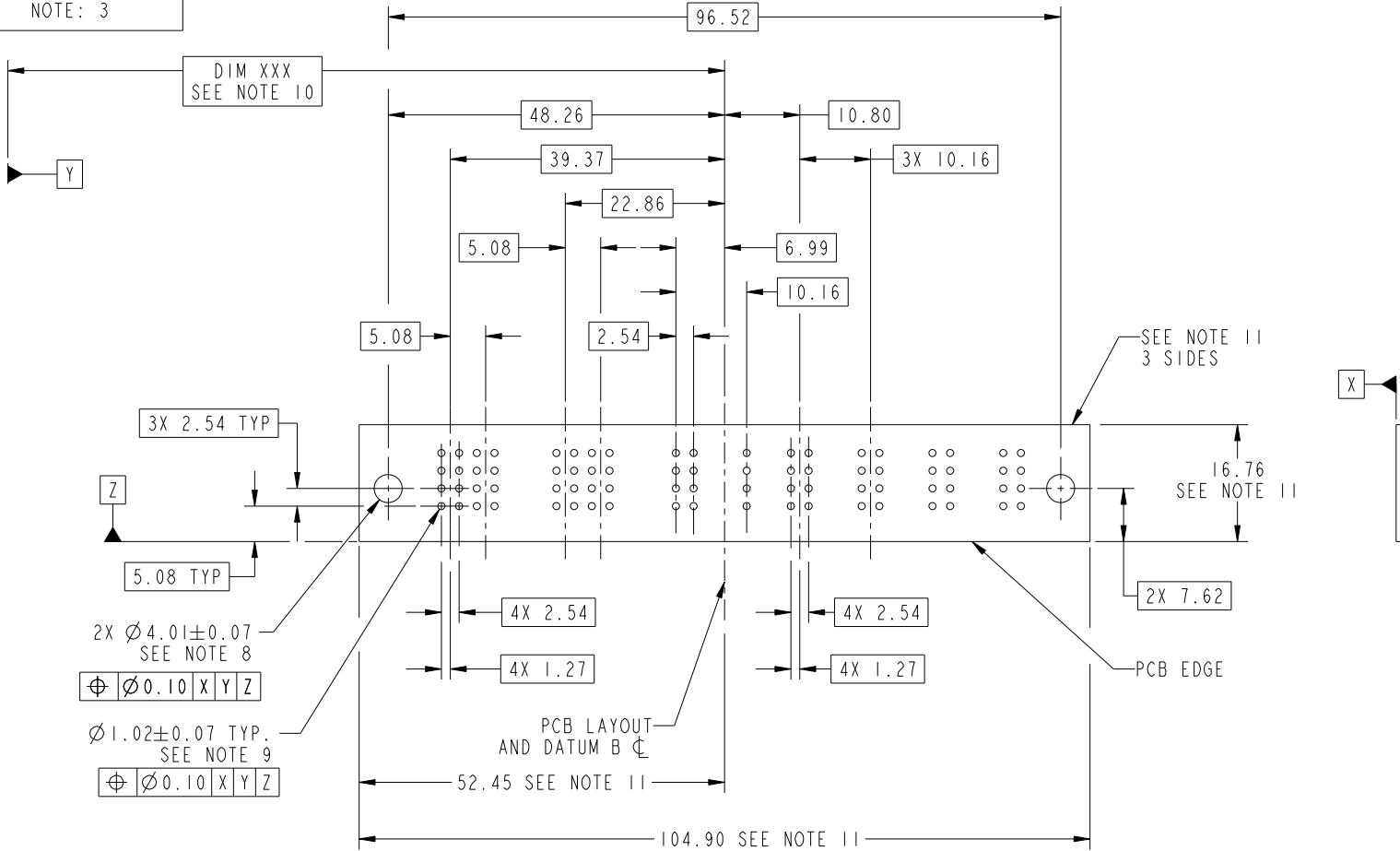
Tous droits strictement réservés. Reproduction ou communication a des tiers interdite sous quelque forme que ce soit sans autorisation écrite du propriétaire. Propriété de c.FCI. Droits de reproduction FCI.

All rights strictly reserved. Reproduction or issue to third parties in any form whatever is not permitted without written authority from the proprietor. Property of FCI. Copyright FCI.



PRODUCT NUMBER

51939-371...  
NOTE: 3



RECOMMENDED PCB LAYOUT

mat'l code		SEE NOTE		tolerances unless otherwise specified		CUSTOMER		 www.fciconnect.com	
ltr	ecn no.	dr	date	linear	0.X ±0.5	COPY		title	
A					0.XX ±0.25	projection		6P + 24S + 7P	
				angles	0.XXX ±0.10			RIGHT ANGLE SOLDER HEADER	
				dr	0° ±2°	MM		product family PwrBlade	
				enrg	Warren Du 07/09/08	scale		code	
				enrg	Warren Du 07/09/08	1:1		213	
				chr	Gary Hsieh 07/09/08			sheet	
				appd	Joseph Hsia 07/09/08			3 of 4	
sheet index	revision sheet							cage code 22526	

A

A

B

B

1 | 2

3 |

4

1 | 2

Pro/E

PDM: Rev: A

STATUS: Released

Printed: Dec 20, 2010

Tous droits strictement reserves. Reproduction ou communication a des tiers interdite sous quelque forme que ce soit sans autorisation ecrite du proprietaire. Propriete de c FCI. Droits de reproduction FCI.

All rights strictly reserved. Reproduction or issue to third parties in any form whatever is not permitted without written authority from the proprietor. Property of FCI. Copyright FCI.



1 | 2

3

4

PRODUCT NUMBER

51939-371\_\_  
NOTE: 3

NOTES:

1. DIMENSIONS AND TOLERANCES ARE IN ACCORDANCE WITH ASME Y14.5M, 1994 UNLESS OTHERWISE SPECIFIED.

CONNECTOR NOTES:

- 2. HOUSING MATERIAL: UL 94 V-0 GLASS FILLED HIGH-TEMP THERMOPLASTIC  
POWER CONTACT MATERIAL: COPPER ALLOY  
SIGNAL PIN MATERIAL: COPPER ALLOY
  - 3. 51939-371; 51939-371LF PLATING SPEC. SEE PRINT:10064183
  - 4. MANUFACTURER'S NAME, P/N, AND DATE CODE TO APPEAR ON THIS SURFACE.
  - 5. PRODUCT SPECIFICATION GS-12-149.  
APPLICATION SPECIFICATION BUS-20-067.
  - 6. PACKAGED IN TRAYS.
- PCB NOTES:
- 7. ALL HOLE DIAMETERS ARE FINISHED HOLE SIZE.
  - 8. MOUNTING HOLES, WHERE APPLICABLE, ARE UNPLATED.
  - 9.  $\varnothing 1.151 \pm 0.025$  DRILLED HOLES PLATED WITH  
0.008 MIN SnPb OR Sn OVER 0.03  
TO 0.08 Cu PLATING TO ACHIEVE  
 $\varnothing 1.02 \pm 0.07$  HOLE.
  - 10. "DIM XXX" TO BE DETERMINED BY THE CUSTOMER.
  - 11. CONNECTOR KEEP-OUT ZONE.

A

A

B

B

mat'l code		SEE NOTE		tolerances unless otherwise specified		CUSTOMER		 www.fciconnect.com	
ltr	ecn no.	dr	date	linear	0.X $\pm 0.5$		COPY		title 6P + 24S + 7P RIGHT ANGLE SOLDER HEADER
A					0.XX $\pm 0.25$		projection		
					0.XXX $\pm 0.10$				
				angles	0° $\pm 2^\circ$				product family PwrBlade code 213 sheet 4 of 4
				dr	Warren Du	07/09/08	scale		
				enrg	Warren Du	07/09/08	1:1		
				chr	Gary Hsieh	07/09/08	A		51939-371
				appd	Joseph Hsia	07/09/08			
sheet index	revision sheet								

1 | 2

Pro/E

PDM: Rev: A

STATUS: Released

Printed: Dec 20, 2010

cage code 2856

4