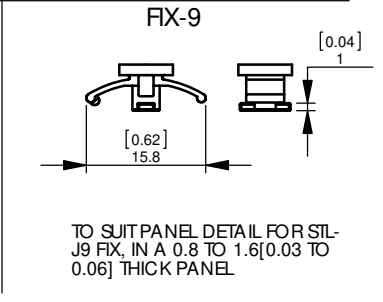
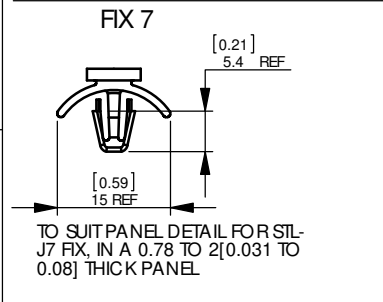
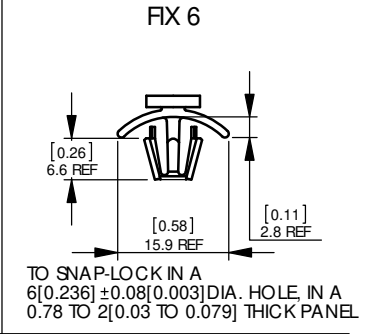
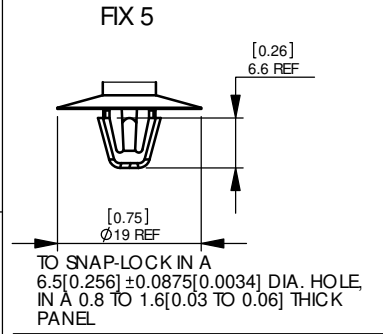
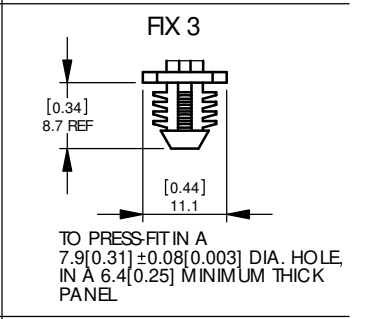
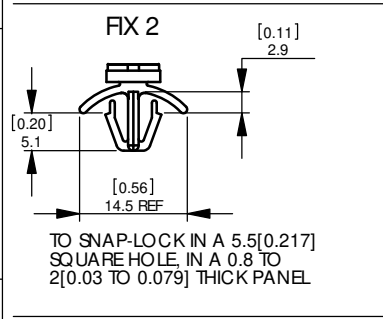
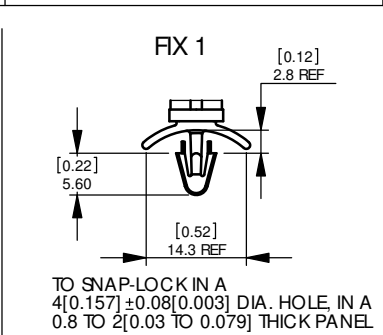
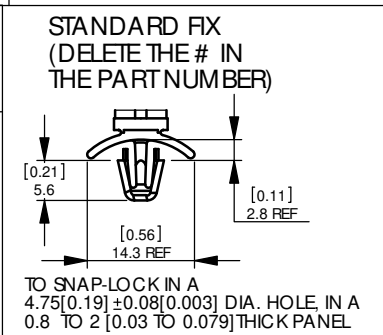
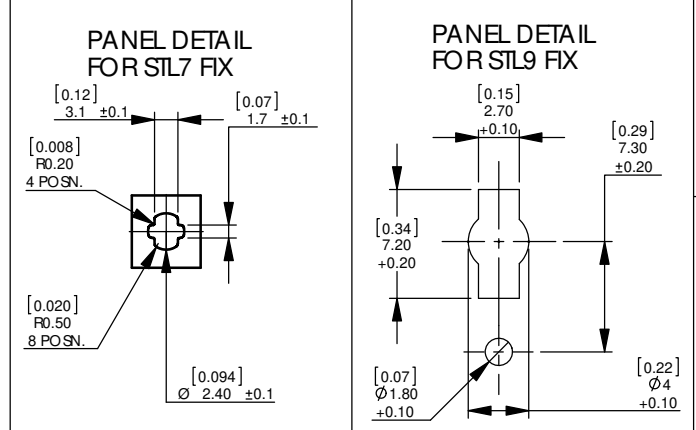
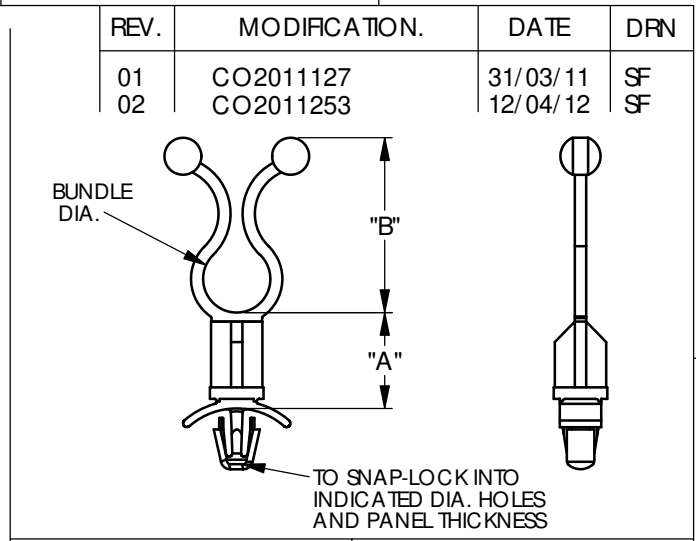


A	B	C	D	E	F
MATERIAL: NYLON 6/6 UL-94 V-2, RMS-01 COLOUR:NATURAL	MATERIAL: NYLON 6/6 UL-94 V-0, RMS- 19 COLOUR:NATURAL	"A"	"B" REF.	BUNDLE Ø	
STL# -250-4M-01	STL# -250-4M-19	4[0.157]			
STL# -250-3-01	STL# -250-3-19	4.8[0.189]			
STL# -250-6M-01	STL# -250-6M-19	6[0.236]			
STL# -250-8M-01	STL# -250-8M-19	8[0.315]			
STL# -250-10M-01	STL# -250-10M-19	10[0.394]			
STL# -250-12M-01	STL# -250-12M-19	12[0.472]			
STL# -250-8-01	STL# -250-8-19	12.7[0.500]			
STL# -250-12-01	STL# -250-12-19	19.1[0.752]			
STL# -250-16-01	STL# -250-16-19	25.4[1]			
STL# -250-20-01	STL# -250-20-19	31.8[1.252]			
STL# -350-4M-01	STL# -350-4M-19	4[0.157]			
STL# -350-3-01	STL# -350-3-19	4.8[0.189]			
STL# -350-6M-01	STL# -350-6M-19	6[0.236]			
STL# -350-8M-01	STL# -350-8M-19	8[0.315]			
STL# -350-10M-01	STL# -350-10M-19	10[0.394]			
STL# -350-12M-01	STL# -350-12M-19	12[0.472]			
STL# -350-8-01	STL# -350-8-19	12.7[0.500]			
STL# -350-12-01	STL# -350-12-19	19.1[0.752]			
STL# -350-16-01	STL# -350-16-19	25.4[1]			
STL# -350-20-01	STL# -350-20-19	31.8[1.252]			
STL# -450-4M-01	STL# -450-4M-19	4[0.157]			
STL# -450-3-01	STL# -450-3-19	4.8[0.189]			
STL# -450-6M-01	STL# -450-6M-19	6[0.236]			
STL# -450-8M-01	STL# -450-8M-19	8[0.315]			
STL# -450-10M-01	STL# -450-10M-19	10[0.394]			
STL# -450-12M-01	STL# -450-12M-19	12[0.472]			
STL# -450-8-01	STL# -450-8-19	12.7[0.500]			
STL# -450-12-01	STL# -450-12-19	19.1[0.752]			
STL# -450-16-01	STL# -450-16-19	25.4[1]			
STL# -450-20-01	STL# -450-20-19	31.8[1.252]			
STL# -600-4M-01	STL# -600-4M-19	4[0.157]			
STL# -600-3-01	STL# -600-3-19	4.8[0.189]			
STL# -600-6M-01	STL# -600-6M-19	6[0.236]			
STL# -600-8M-01	STL# -600-8M-19	8[0.315]			
STL# -600-10M-01	STL# -600-10M-19	10[0.394]			
STL# -600-12M-01	STL# -600-12M-19	12[0.472]			
STL# -600-8-01	STL# -600-8-19	12.7[0.500]			
STL# -600-12-01	STL# -600-12-19	19.1[0.752]			
STL# -600-16-01	STL# -600-16-19	25.4[1]			
STL# -600-20-01	STL# -600-20-19	31.8[1.252]			
STL# -750-4M-01	STL# -750-4M-19	4[0.157]			
STL# -750-3-01	STL# -750-3-19	4.8[0.189]			
STL# -750-6M-01	STL# -750-6M-19	6[0.236]			
STL# -750-8M-01	STL# -750-8M-19	8[0.315]			
STL# -750-10M-01	STL# -750-10M-19	10[0.394]			
STL# -750-12M-01	STL# -750-12M-19	12[0.472]			
STL# -750-8-01	STL# -750-8-19	12.7[0.500]			
STL# -750-12-01	STL# -750-12-19	19.1[0.752]			
STL# -750-16-01	STL# -750-16-19	25.4[1]			
STL# -750-20-01	STL# -750-20-19	31.8[1.252]			
OTHER COLOURS AVAILABLE BY SPECIAL ORDER					



NOTE:
ALTERNATE DIMENSIONS FOR REFERENCE ONLY

REPLACE # WITH FIX STYLE REQUIRED.
EXAMPLE:
"STL1-250-4M-01"



INFORMATION CONTAINED IN THIS DOCUMENT IS CONFIDENTIAL TO RICHCO INTERNATIONAL Co. Ltd. AND MAY NOT BE DISCLOSED OR REPRODUCED IN WHOLE OR PART WITHOUT THEIR WRITTEN CONSENT.

RICHCO, INC.
WWW.RICHCO-INC.COM

ALL DIMENSIONS IN mm [inches]
GENERAL TOLERANCES ±0.25
UNLESS OTHERWISE STATED
1 DECIMAL PLACE ±
2 DECIMAL PLACES ±
ANGULAR ±1°

THIRD ANGLE

MATERIAL: See table COLOUR: See table

DESCRIPTION: STAND-OFF TWIST LOCK PART No: See Table

DRG No: 011-014 NPR No: RR10-0002 SHEET SIZE A4

DRN	DATE	CHKD	DATE	SCALE	SHEET No.
SF	14/02/11	TC	14/02/11	NTS	1 OF 1