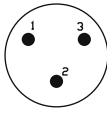
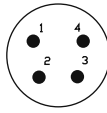
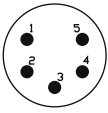
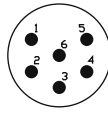
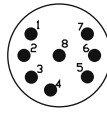


STANDARD DATA EP/AP

| | | VALUE | | | | |
|-----------------------------------|--|---|---|---|---|---|
| GENERAL CHARACTERISTICS | Number of contacts | 3 | 4 | 5 | 6 | 8 |
| | Contact Arrangements (Front view of pin insert) |  |  |  |  |  |
| | Termination | SOLDER | | | | |
| | Wire Gauge - Stranded wire: | 12AWG | 12AWG | 12AWG | 12AWG | 14AWG |
| | Flammability | UL94V-0 | | | | |
| | Environmental | Complies with EU RoHS 2 Directive 2011/65/EU | | | | |
| ELECTRICAL CHARACTERISTICS | Service Voltage RMS ¹⁾ | 460V | 660V | 200V | 200V | 100V |
| | Test Voltage AC RMS | 2400V | 3000V | 1600V | 1600V | 1300V |
| | Current carrying capacity | 20A | 20A | 20A | 20A | 15A |
| | Typical Contact Resistance | ≤3mΩ | | | | |
| | Insulation Resistance | ≥1000MΩ | | | | |
| CLIMATIC CHARACTERISTICS | Protection Class | IP40 | | | | |
| | Operating Temperature | -25 °C to +75 °C (-13°F to +167°F) | | | | |
| MECHANICAL CHARACTERISTICS | Weight - EP 11 & 12 ²⁾ | 80g (0.176lb) | 84g (0.185lb) | 86g (0.189lb) | 86g (0.189lb) | 86g (0.189lb) |
| | Weight - EP 13 & 14 ²⁾ | 48g (0.105lb) | 50g (0.110lb) | 54g (0.119lb) | 54g (0.119lb) | 54g (0.119lb) |
| | Weight - AP 11 & 12 ²⁾ | N/A | 42g (0.092lb) | 44g (0.097lb) | 44g (0.097lb) | 44g (0.097lb) |
| | Weight - AP 13, 14, 21 & 22 ²⁾ | N/A | 26g (0.057lb) | 30g (0.066lb) | 30g (0.066lb) | 28g (0.061lb) |
| | Typical Cable retention force | 22Kg to 44Kg (50lb to 100lb) - Dependant on cable material and diameter | | | | |
| | Mechanical operations | 1000 mating cycles | | | | |

¹⁾ Not suitable for domestic applications above 50V

²⁾ Approximate weight only, does not include packaging. Please contact us for exact weight for shipping purposes.



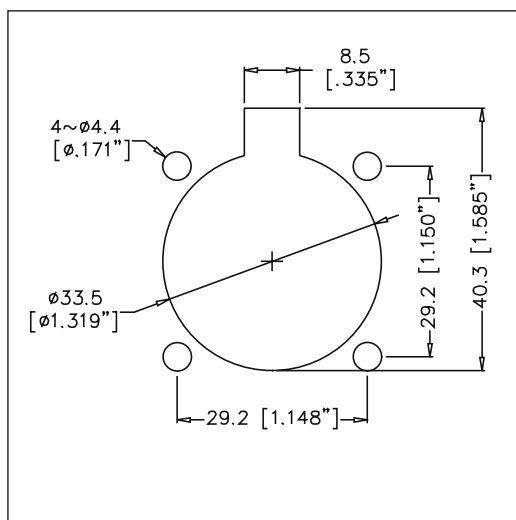
STANDARD DATA EP/AP (CONT'D)

| MATERIALS | | DETAILS | |
|----------------------------------|------------------|----------------------------------|---------------------------------|
| | | AP | EP |
| Connector shell | | Modified PPE Resin | Diecast Zinc Alloy |
| Shell finish | | Black | Satin Nickel or Black |
| Insulators | | UL94V-0 PBT Resin | |
| Cable Bushing | | Silicon Rubber | UL94 HB Thermoplastic Elastomer |
| Male contact Machined - Solder | | Brass / Bright Tin | |
| Material / Plating | | | |
| Female contact Machined - Solder | | Brass / Bright Tin | |
| Material / Plating | | | |
| CLAMPING CHARACTERISTICS | Cable OD Range | 11mm to 17mm (0.43" to 0.67") | 9mm to 16mm (0.35" to 0.63") |
| | Retention Method | Two opposing plastic screws | Metal saddle clamp |

Rev 3 - 03/2013

EP/AP SERIES PANEL CUTOUT DATA - FRONT VIEW

EP 13/AP 13/AP 21



EP 14/AP 14/AP 22

