

Description: 2012 1.57G&2.4G&5GHz Triplexer

PART NUMBER: TPX2012LL94R1525A

Features:

- Compact size : 2.0x1.2x0.9mm
- RoHS compliant

Applications:

- WLAN, 802.11a/b/g/n
- ISM Band
- GPS

ELECTRICAL SPECIFICATIONS

DESCRIPTION	VALUE		
	Low Band	Middle Band	High Band
Pass Band	1560~1610MHz	2400~2500MHz	4900~5950MHz
Insertion loss	0.6dB (Max) at 25°C	0.7dB (Max) at 25°C	0.8dB (Max) at 25°C
V.S.W.R /Return-Loss	2.0(Max)/10.0dB(Min)	2.0(Max) /10.0dB(Min)	2.0(Max) /10.0dB(Min)
Attenuation	16dB(Min).@2.4~2.5GHz 14dB(Min).@4.8~6.0GHz	17dB(Min).@1.56~1.605GHz 17.5dB(Min).@4.8~5.0GHz 10dB(Min).@7.2~7.5GHz	30dB(Min).@0.86~0.96GHz 25dB(Min).@1.545~1.605GHz 25dB(Min).@1.71~1.99GHz 28dB(Min).@2.17GHz 28dB(Min).@2.4~2.5GHz 15dB(Min).@9.8~11.8GHz
Isolation	Low to Middle 18dB(Min).@2.4~2.5GHz 9dB(Min).@4.8~6.0GHz	Middle to High 17dB(Min).@1.56~1.605GHz 15dB(Min).@4.8~5.95GHz	Low to High 25dB(Min).@1.560~1.605GHz 25dB(Min).@2.4~2.5GHz
Operating Temperature	-40 ~ 85°C		
Dimension	2.0 x 1.2 x 0.9mm		

In the effort to improve our products, we reserve the right to make changes judged to be necessary.

CONFIDENTIAL AND PROPRIETARY INFORMATION

This document contains confidential and proprietary information of Pulse Electronics, Inc. (Pulse) and is protected by copyright, trade secret and other state and federal laws. Its receipt or possession does not convey any rights to reproduce, disclose its contents, or to manufacture, use or sell anything it may describe. Reproduction, disclosure or use without specific written authorization of Pulse is strictly forbidden.

For more information:



Pulse Worldwide Headquarters
15255 Innovation Drive #100
San Diego, CA 92128
USA
Tel:1-858-674-8100

Pulse/Larsen Antennas
18110 SE 34th St Bldg 2 Suite 250
Vancouver, WA 98683
USA
Tel: 1-360-944-7551

Europe Headquarters
Pulse GmbH & Do, KG
Zeppelinstrasse 15
Herrenberg, Germany
Tel: 49 7032 7806 0

Pulse (Suzhou) Wireless Products Co, Inc.
99 Huo Ju Road(#29 Bldg,4th Phase
Suzhou New District
Jiangsu Province, Suzhou 215009 PR China
Tel: 86 512 6807 9998

Description: 2012 1.57G&2.4G&5GHz Triplexer

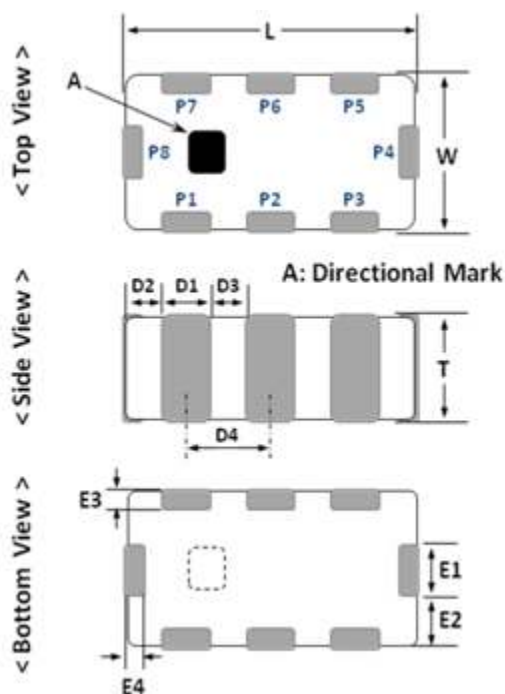
PART NUMBER: TPX2012LL94R1525A

MECHANICAL DIMENSION

Outline

Termination

Mechanical

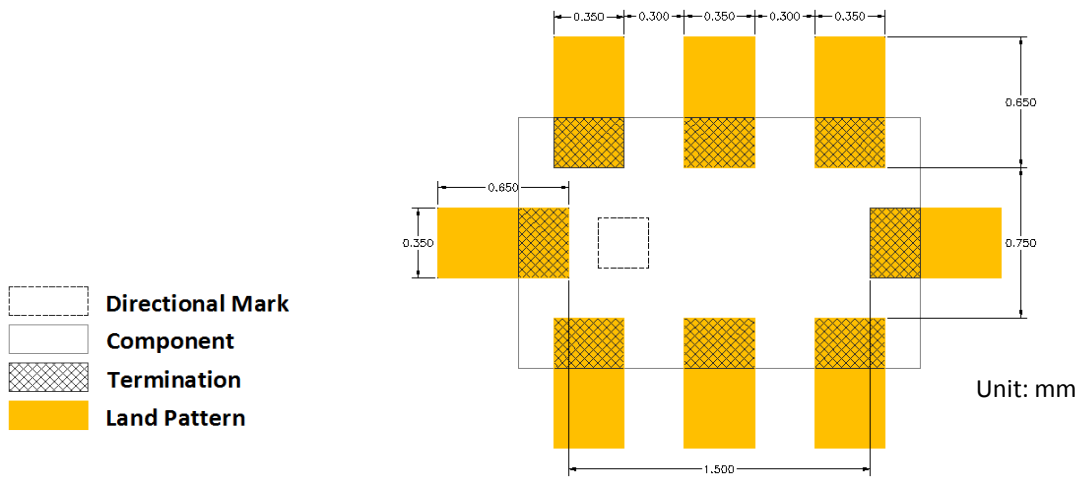


Terminal name	Dimension		Dimension
P1	GND	L (mm)	2.00 ± 0.15
P2	Common	W (mm)	1.25 ± 0.15
P3	GND	T (mm)	0.90 ± 0.15
P4	Low band	D1 (mm)	0.35 ± 0.15
P5	GND	D2 (mm)	0.175 ± 0.15
P6	Middle band	D3 (mm)	0.30 ± 0.15
P7	GND	D4 (mm)	0.65 ± 0.15
P8	High band	E1 (mm)	0.35 ± 0.15
		E2 (mm)	0.45 ± 0.15
		E3 (mm)	0.25 ± 0.15
		E4 (mm)	0.25 ± 0.15

Description: 2012 1.57G&2.4G&5GHz Triplexer

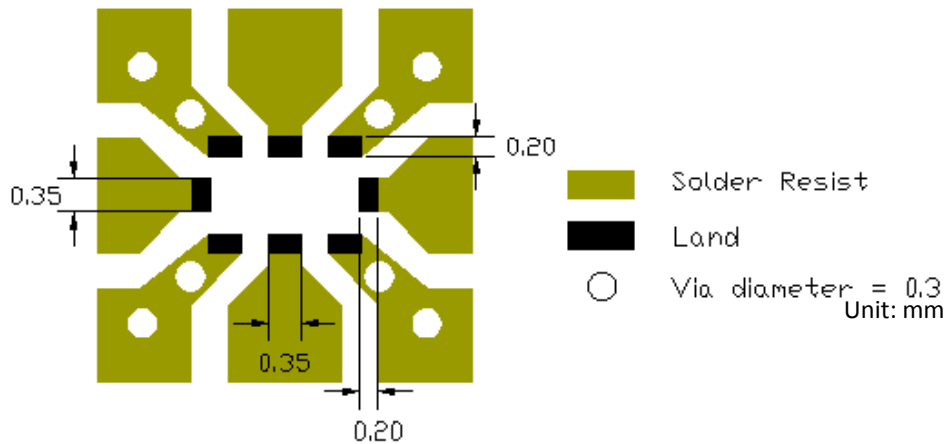
PART NUMBER: TPX2012LL94R1525A

Recommend Land Pattern



Reference design of evaluation board

Reference design of EVB



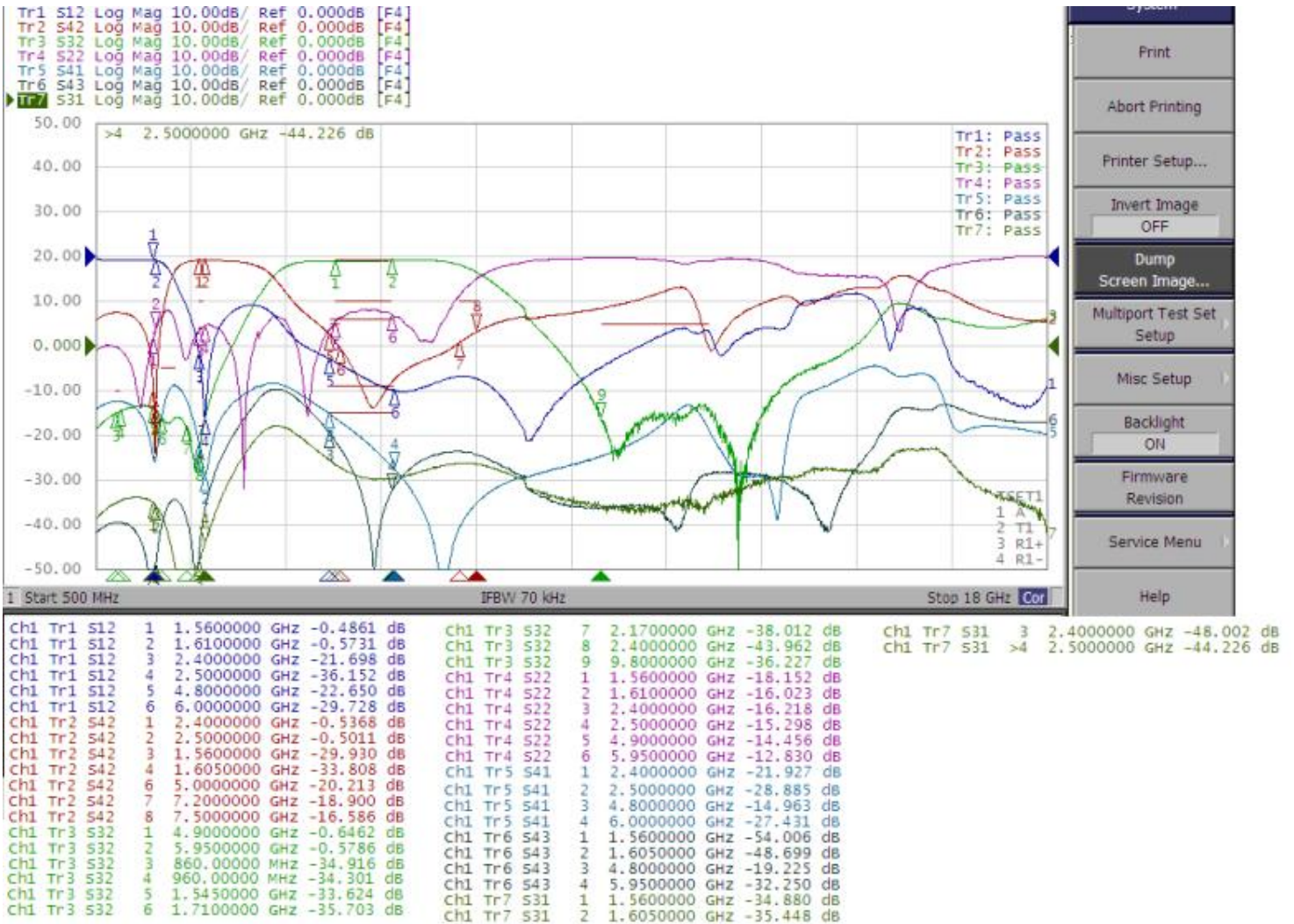
Line width should be designed to match 50Ω characteristic impedance, depending on PCB material and thickness.

Reference design of evaluation board

Description: 2012 1.57G&2.4G&5GHz Triplexer

PART NUMBER: TPX2012LL94R1525A

ELECTRICAL PERFORMANCES



- Measured on Agilent E5071C Network Analyzer
- Common port: Port 2 (Return loss S22)
- Low band port: Port 1 (Low band insertion loss S12)
- Middle band port Port4(Middle band insertion loss S42)
- High band port: Port 3 (High band insertion loss S32)

Frequency Characteristics

In the effort to improve our products, we reserve the right to make changes judged to be necessary.

CONFIDENTIAL AND PROPRIETARY INFORMATION

This document contains confidential and proprietary information of Pulse Electronics, Inc. (Pulse) and is protected by copyright, trade secret and other state and federal laws. Its receipt or possession does not convey any rights to reproduce, disclose its contents, or to manufacture, use or sell anything it may describe. Reproduction, disclosure or use without specific written authorization of Pulse is strictly forbidden.



Description: 2012 1.57G&2.4G&5GHz Triplexer

PART NUMBER: TPX2012LL94R1525A

REVISION HISTORY

Revision	Date	Description
Version 1	Mar. 11, 2021	- New issue