

MATERIALS AND FINISHES

BODY BRASS  
PLATED SEE TABLE

CRIMP TUBE BRASS  
PLATED NICKEL

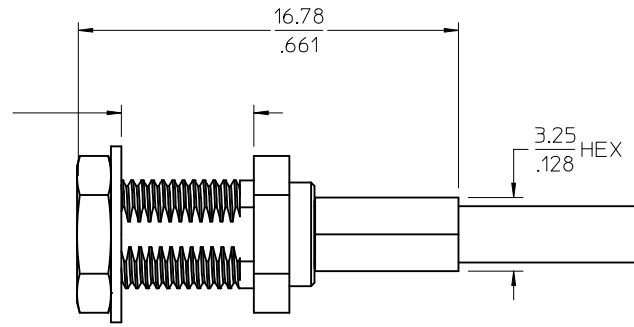
CENTER CONTACT BERYLLIUM COPPER  
PLATED GOLD (SEE TABLE)

INSULATOR TEFLON

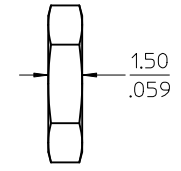
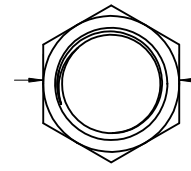
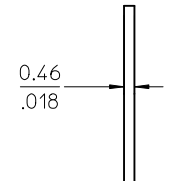
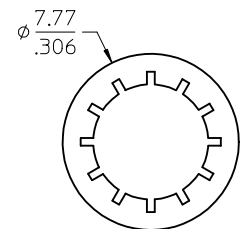
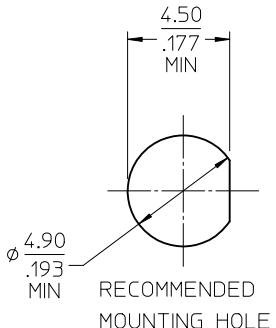
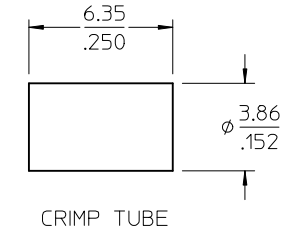
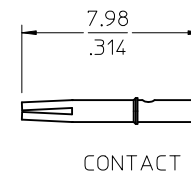
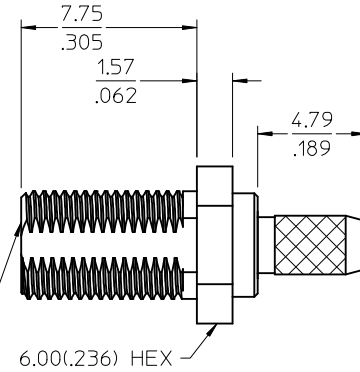
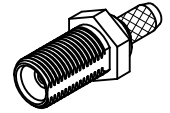
LOCKWASHER PHOSPHOR BRONZE  
PLATED NICKEL

JAMNUT BRASS  
PLATED NICKEL

5.84  
.230  
MAX PANEL  
THICKNESS



RECOMMENDED  
STRIP DIMENSIONS



LOCKWASHER

JAMNUT

CECC-22-220	INTERFACE
SPECIFICATION	DESCRIPTION

73415-5233	INCLUDED	GENERAL	10 MICROINCHES	PLATED GOLD
73415-5232	NOT INCLUDED	GENERAL	30 MICROINCHES	PLATED NICKEL
73415-5231	INCLUDED	SMALL TRAY	10 MICROINCHES	PLATED NICKEL
73415-5230	INCLUDED	GENERAL	10 MICROINCHES	PLATED NICKEL
PART NO.	HARDWARE	PACKAGING	FINISH CONTACT	FINISH BODY

CHG: ADD PART NO. 73415-5233 PER PDR0912475	EC NO: URF2011-0031	DRWN: YCHENG	CHKD: TEF	APPR: M HUANG
2010/07/19	2010/07/19	2004/12/13	2010/07/22	
DESCRIPTION				
REV B5				

QUALITY SYMBOLS	GENERAL TOLERANCES (UNLESS SPECIFIED)
▽=0	mm INCH
▽=0	4 PLACES ± --- ± ---
	3 PLACES ± --- ± ---
	2 PLACES ± --- ± ---
	1 PLACE ± --- ± ---
	ANGULAR ± 2 °
	DRAFT WHERE APPLICABLE MUST REMAIN WITHIN DIMENSIONS

DIMENSION STYLE	SCALE	DESIGN UNITS	THIRD ANGLE PROJECTION
MM/IN		METRIC	
DRAWN BY	DATE	TITLE	
SSS	2004/12/10	MCX JACK STR, RG316 BULKHEAD MOUNT 50 OHM MCX-JC	
CHECKED BY	DATE		
TEF	2004/12/13		
APPROVED BY	DATE		
JDW	2004/12/13		
MATERIAL NO.	DOCUMENT NO.		
SEE TABLE	SD-73415-523		
SIZE			
C			

MATERIAL NO. SEE TABLE		DOCUMENT NO. SD-73415-523		SHEET NO. 1 OF 1	
THIS DRAWING CONTAINS INFORMATION THAT IS PROPRIETARY TO MOLEX INCORPORATED AND SHOULD NOT BE USED WITHOUT WRITTEN PERMISSION					