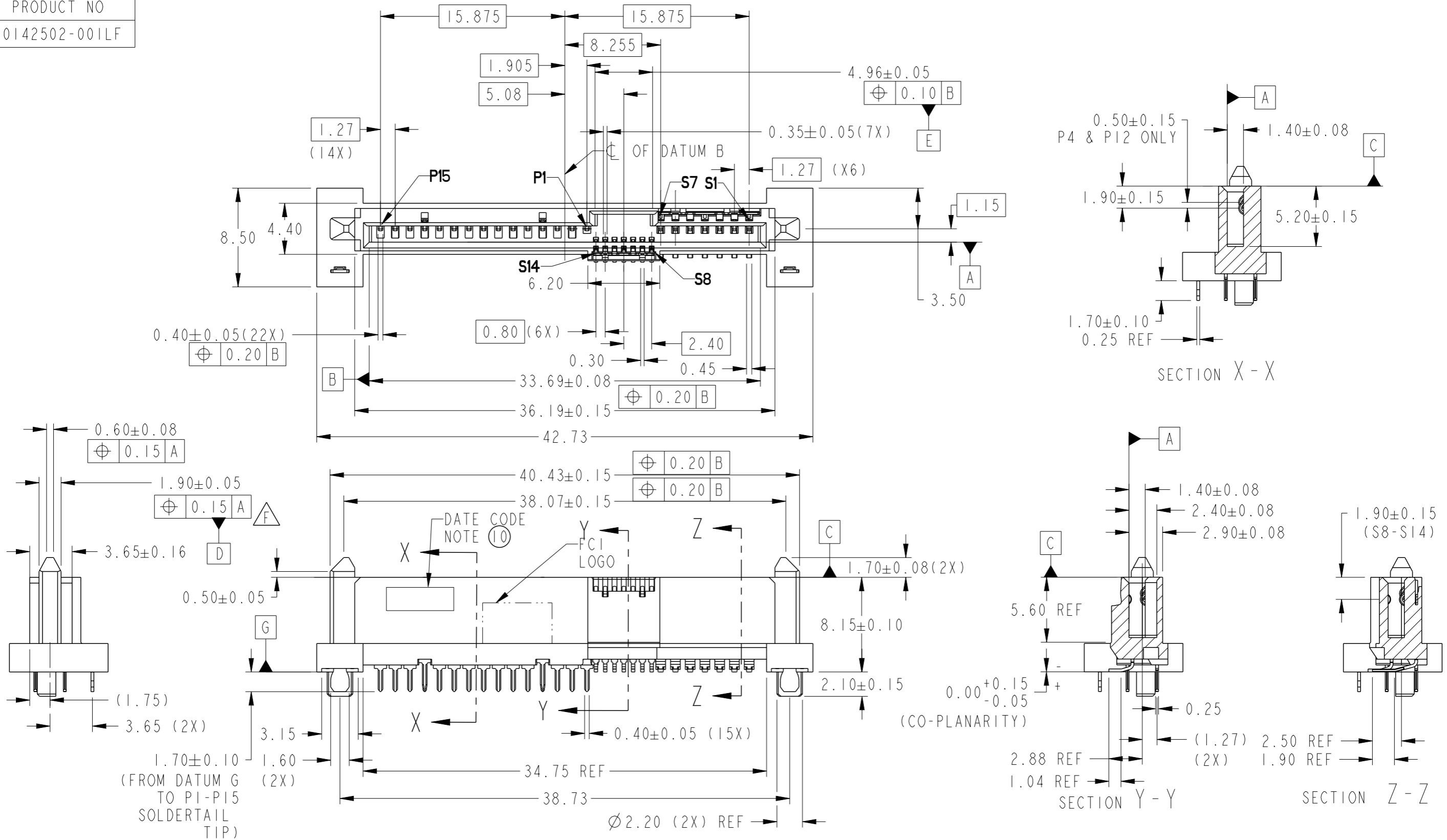


PRODUCT NO
10142502-001LF



Amphenol
FCi

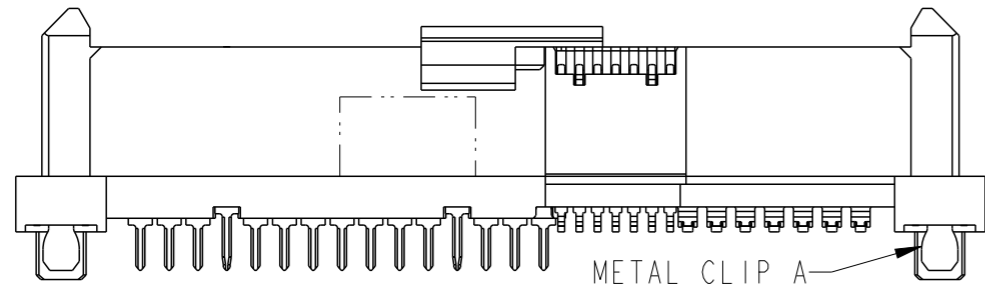
© 2016 AFCI

spec ref	-	dr	Noorhazlinda,	2017/08/23	projection	MM	size	A3	scale	3:1
tolerance std	ISO 1101	eng	Wai-Bin Cho	2019/06/13			ecn no	ELX-M-33877-1	rel level	Released
TOLERANCES UNLESS OTHERWISE SPECIFIED		chr	-	app						
surface	linear	0.X	±	Amphenol FCi	24G SAS RECEPTACLE WIDE BASE HYBRID TYPE ASSY		dwg no	10142502	rev	F
	angular	0°	±2°	cat. no.	-	Product - Customer Drw	sheet 1 of 4			

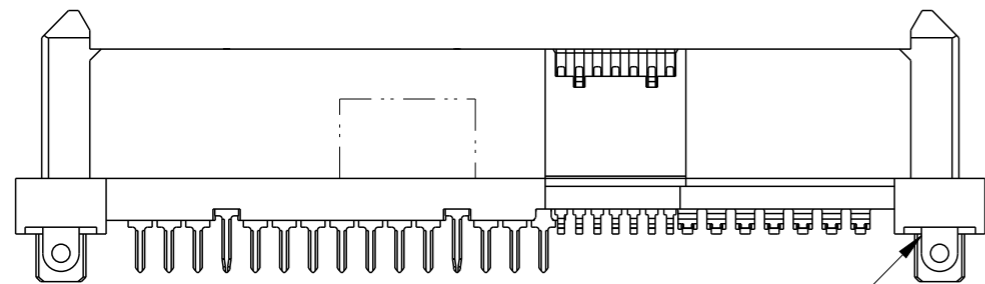
PRODUCT NO.
SEE TABLE

H

TOP VIEW

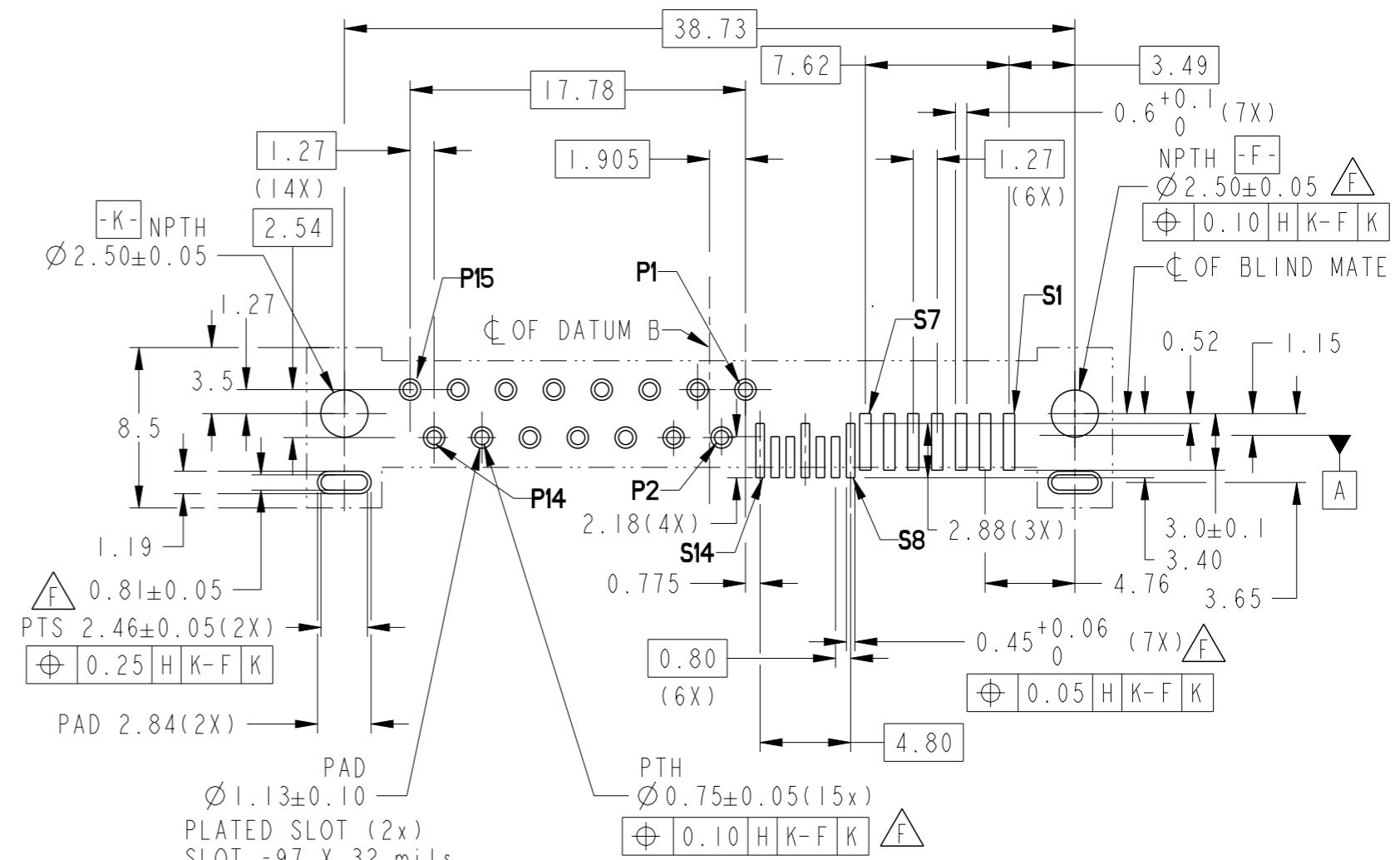


10142502-001CLF $\triangle F$



10142502-002CLF $\triangle F$

METAL CLIP B

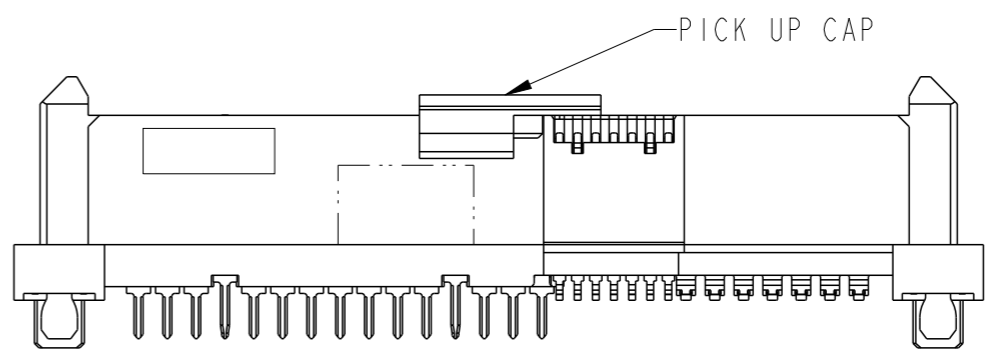
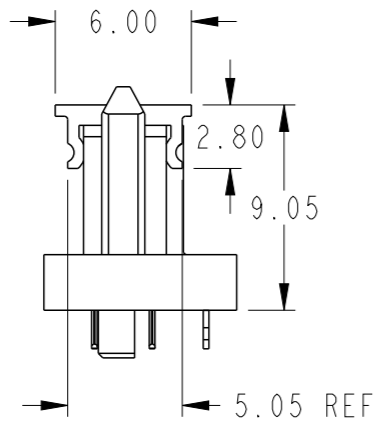
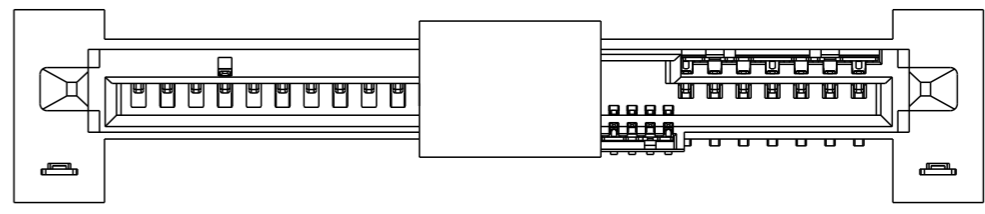


RECOMMENDED PCB LAYOUT
FRONT VIEW

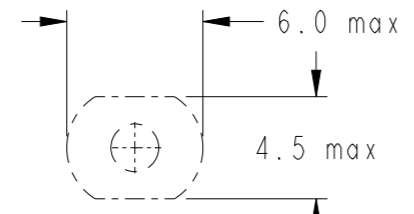
PLATED HOLES (15X)
FHS - 29.5 mils
Pad - 44.5 mils

spec ref	-			dr	Noorhazlinda,	2017/08/23	projection	MM	size	A3	scale	3:1	
tolerance std	ISO 1101			eng	Wai-Bin Cho	2019/06/13		← →	ecn no	ELX-M-33877-1			
TOLERANCES UNLESS OTHERWISE SPECIFIED				chr	-	-			product family	-	rel level	Released	
surface	linear	0.X	± -	Amphenol FCI	24G SAS RECEPTACLE			dwg no	10142502			rev	F
		0.XX	±.20		WIDE BASE HYBRID TYPE ASSY								
	angular	0°	±2°		cat. no.	-	Product - Customer Drw		sheet 2 of 4				

PRODUCT NO	PICK-UP CAP	RECOMMENDED P.C. BOARD THICKNESS	TYPE OF CLIP	PACKAGING
10142502-001LF	NO	1.57mm (0.062") / 2.36mm (0.093") / 3.43mm (0.135")	METAL CLIP A △ F	TRAY
10142502-001CLF	YES			TAPE & REEL
10142502-001C-TRLF	YES		METAL CLIP B △ F	TRAY
10142502-002LF	NO			TAPE & REEL
10142502-002CLF	YES			
10142502-002C-TRLF	YES			



PART WITH PICK-UP CAP, SEE NOTE ③



RECOMMENDED SUCTION HEAD SIZE

spec ref	-	dr	Noorhazelinda,	2017/08/23
tolerance std	ISO 1101	eng	Wai-Bin Cho	2019/06/13
TOLERANCES UNLESS OTHERWISE SPECIFIED		chr	-	-
		appr	Koon-Poh Tay	2019/06/21
surface	linear	0.X	±-	
		0.XX	±.20	
		0.XXX	±-	
ISO 1302	angular	0°	±2°	


projection	MM	size	A3	scale	3:1
product family	-	ecn no	ELX-M-33877-1	rel level	Released
Amphenol FCI	24G SAS RECEPTACLE	dwg no	10142502	rev	F
cat. no.	-	Product - Customer Drw	sheet 3 of 4		

Amphenol FCI

© 2016 AFCI

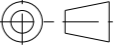
PRODUCT NO
SEE TABLE

NOTES:

- 1 MATERIAL:
 - 1)HOUSING: HIGH TEMP TERMOPLASTIC, UL 94V-0
COLOR: BLACK
 - 2)TERMINAL: COPPER ALLOY
 - 3)HOLD DOWN: COPPER ALLOY
- 2 FINISH
 - 1)TERMINAL: 30μ" MIN Au PLATING (CONTACT POINT) OVER
50μ" MIN Ni
 - 2)SOLDER TAIL: 75μ" MIN Sn OVER 50μ" Ni
 - 3)HOLD DOWN: 75μ" MIN Sn OVER 50μ" Ni
- ③ PART WITH PICK-UP CAP, P/N XXXXXXXX-XXXC LF
- 4 THE STD PACKAGING IS IN TRAY
- 5 FOR TAPE & REEL PACKAGING, SUFFIX "-TR" ADDED AFTER
PRODUCT NUMBER (E.G. XXXXXXXX-XXXC-TRLF)
- 6 THE HOUSING WILL WITHSTAND EXPOSURE TO 260°C PEAK
TEMPERATURE FOR 10 SECONDS IN A CONVECTION, INFRA-RED
OR VAPOUR PHASE REFLOW OVEN.
- 7 THIS PRODUCT MEETS EUROPEAN UNION DIRECTIVES AND
OTHER COUNTRY REGULATIONS AS DESCRIBED IN GS-47-0004
- 8 PART NUMBERS ENDING IN "LF" MEANS FOR NOTE 8 LEAD FREE
IDENTIFICATION
- 9 A  SYMBOL WILL BE NEXT TO ANY DIMENSION, VIEW OR NOTE
WHICH HAS BEEN MODIFIED WITH THE CURRENT DRAWING REVISION
- ⑩ DATE CODE LOCATION. DATE CODE NO. YYWW (E.G. 14225)
- 11 CORING AT NON FUNCTIONAL AREAS ARE SUBJECT TO CHANGE
WITHOUT NOTICES.

Amphenol
FCi

© 2016 AFCI

spec ref -		dr	Noorhazlinda,	2017/08/23	projection	MM	size	A3	scale	3:1	
tolerance std		eng	Wai-Bin Cho	2019/06/13		← →	ecn no		ELX-M-33877-1		
ISO 1101	TOLERANCES UNLESS OTHERWISE SPECIFIED	chr	-	-			rel level		Released		
surface	linear	appr	Koon-Poh Tay	2019/06/21	product family		-		rel level	Released	
ISO 1302	linear	0.X	± -	Amphenol FCi	24G SAS RECEPTACLE		dwg no	10142502		rev	F
	linear	0.XX	±.20		WIDE BASE HYBRID TYPE ASSY						
	linear	0.XXX	± -		cat. no. -			Product - Customer Drw			
angular	0°	±2°									