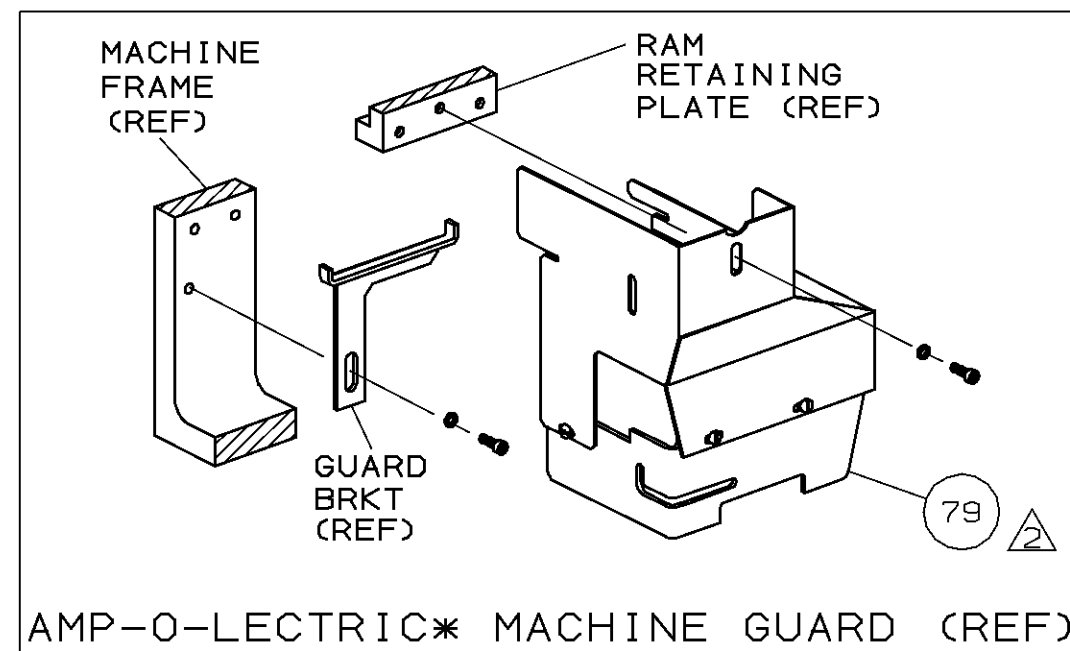
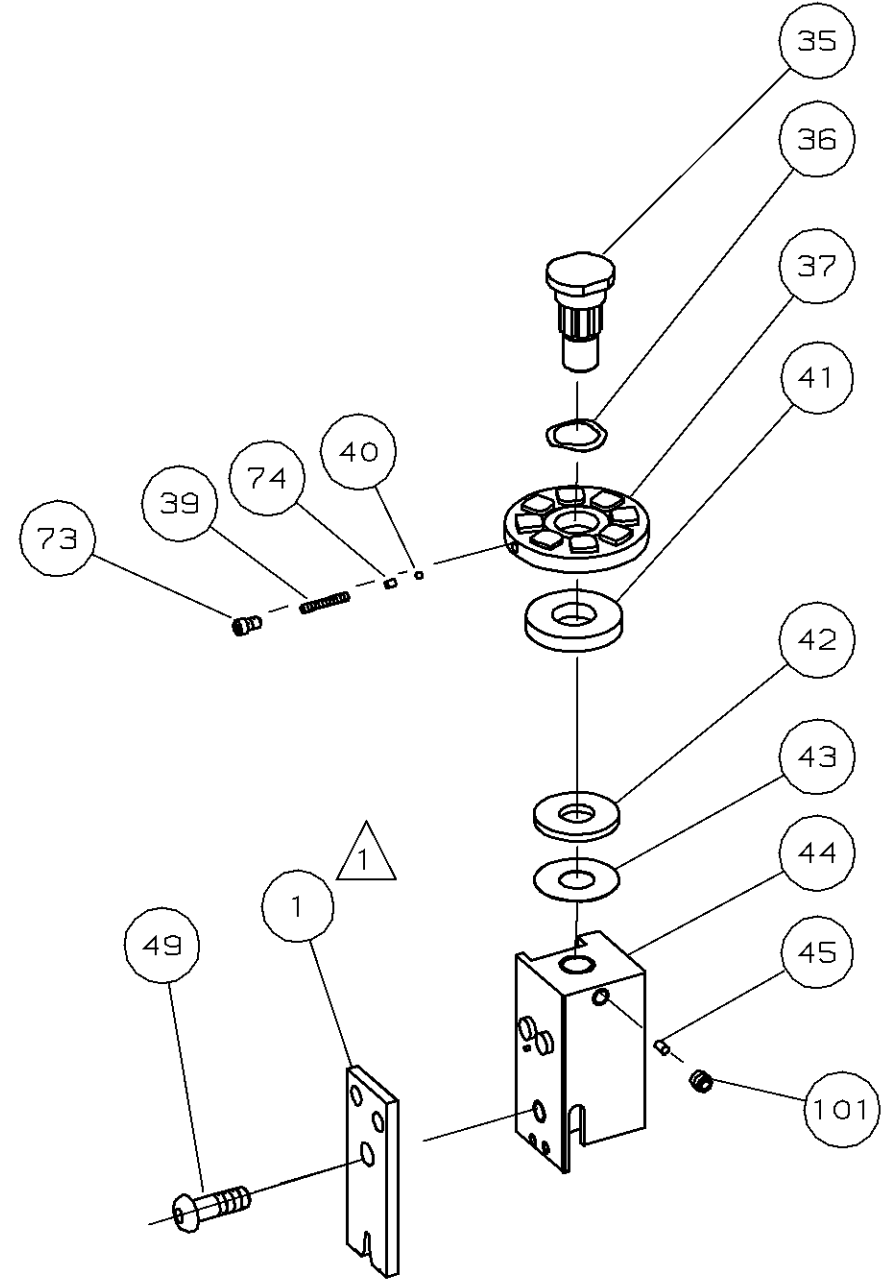
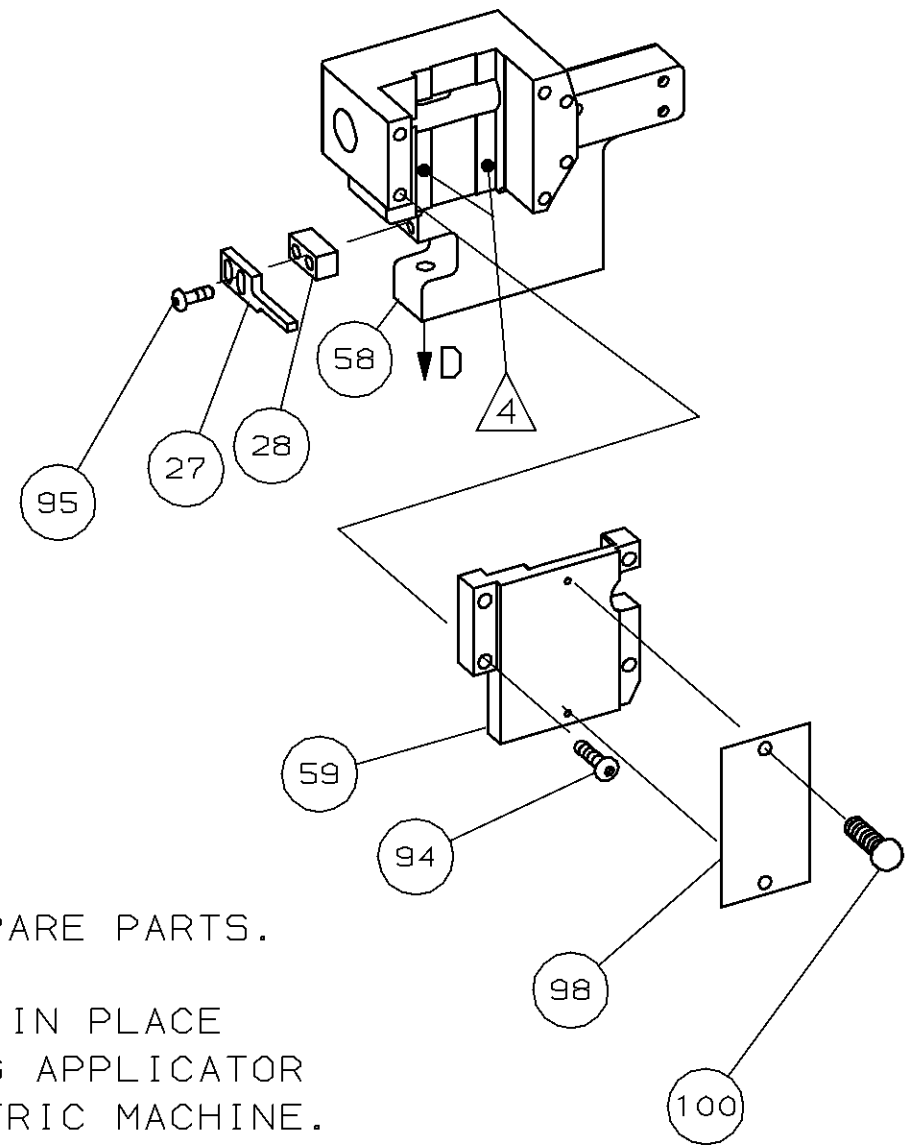


THIS DRAWING IS A CONTROLLED DOCUMENT FOR AMP INCORPORATED. IT IS SUBJECT TO CHANGE AND THE CONTROLLING ENGINEERING ORGANIZATION SHOULD BE CONTACTED FOR THE LATEST REVISION.

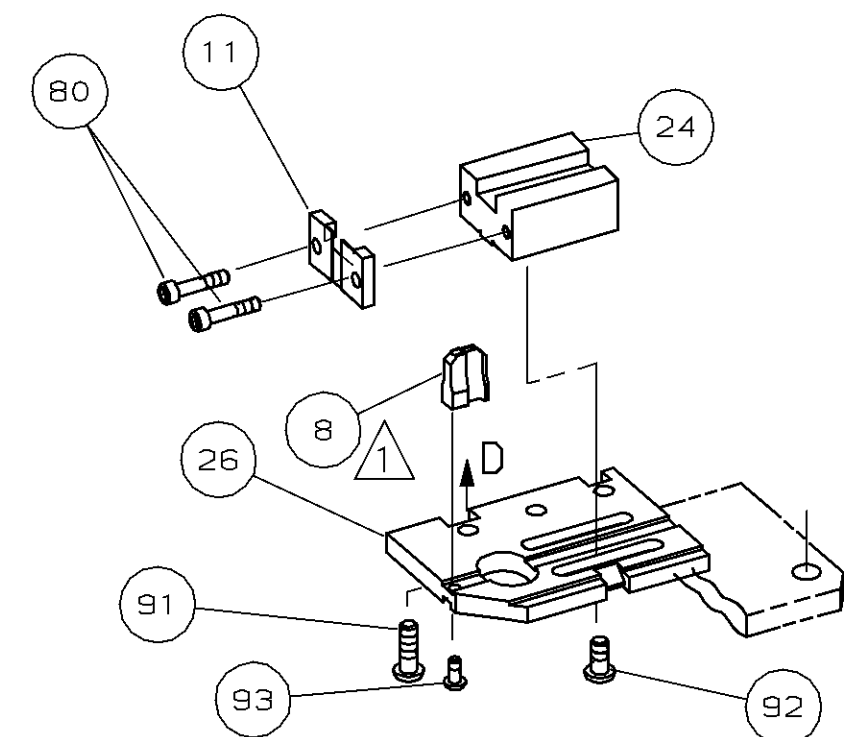
THIS INFORMATION IS CONFIDENTIAL AND IS DISCLOSED TO YOU ON CONDITION THAT NO FURTHER DISCLOSURE IS MADE BY YOU TO OTHER THAN AMP PERSONNEL WITHOUT WRITTEN AUTHORIZATION FROM AMP INCORPORATED, HARRISBURG, PA.



AMP-O-ELECTRIC\* MACHINE GUARD (REF)



- NOTES:
- 1 RECOMMENDED SPARE PARTS.
  - 2 GUARD MUST BE IN PLACE WHEN OPERATING APPLICATOR IN AMP-O-ELECTRIC MACHINE.
  - 3 LUBRICATE DAILY USING NO. 20 MACHINE OIL.
  - 4 GREASE LIGHTLY.



			124	1	454220-1	CAP, RAM	59
			123	1	453736-1	HOUSING	58
			122				57
			121				56
			120				55
			119				54
			118				53
			117				52
			116				51
			115				50
			114	1	7-21002-9	BOLT, CRIMPER (5/16-24x1.00)	49
			113				48
			112				47
			111				46
			110	1	690191-1	PLUG, NYLON	45
			109	1	455674-1	RAM	44
			108	1	690125-1	WASHER, LAMINATED	43
			107	1	690124-1	WASHER, RAM	42
			106	1	690223-1	DISC, SPACER	41
			105	1	23241-6	BALL, STEEL	40
			104	1	690170-1	SPRING, COMPRESSION	39
			103				38
			102	1	1-690141-7	DISC, WIRE	37
1	21009-2	SCR,SKT SET (1/4-20x.25 LOC-WEL)RAM	101	1	22480-5	WASHER, SPRING	36
2	21017-2	SCR,DRIVE (#2x.19) IDENT PLATE	100	1	690212-1	POST, RAM	35
			99				34
1	461264-1	PLATE, IDENTIFICATION	98				33
			97				32
			96				31
2	2-21002-2	SCR,BHC (8-32x.50) STRIPPER	95				30
4	2-21002-9	SCR,BHC (10-32x.75) HSG CAP	94				29
1	22733-8	SCR,BHC (8-32x.38 LOC-WEL) ANVIL	93	1	3-690451-2	SPACER, STRIPPER	28
4	3-21002-3	SCR,BHC (1/4-20x.50) LOC BLOCK	92	1	240639-1	STRIPPER	27
3	2-22733-8	SCR,BHC (1/4-20x.62) BASE PL	91	1	455676-1	PLATE, BASE	26
			90				25
			89	1	852604-1	BLOCK, LOCATOR	24
			88				23
			87				22
			86				21
			85				20
			84				19
			83				18
			82				17
			81				16
2	3-21000-7	SCR,SKT CAP (10-32x.75) LOC PLATE	80				15
1	455750-7	GUARD, ASSY	79				14
			78				13
			77				12
			76	1	852605-1	PLATE, LOCATOR	11
			75				10
1	690603-1	SPRING, ASSIST	74				9
1	23030-1	SCR,SKT CAP (6-32x.25) CP DISC	73	1	6-240654-6	ANVIL	8
			72				7
			71				6
			70				5
			69				4
			68				3
			67				2
			66	1	456413-2	CRIMPER, INSULATION	1
			65				
			64				
			63				
			62				
			61				
			60				

QTY	PART NO	DESCRIPTION	ITEM NO
-----	---------	-------------	---------

CRIMPING DATA				APPLICATOR WILL APPLY	
PAD LTR	CRIMP HEIGHT	INS SIZE	WIRE STRIP LENGTH		
A	NOT	USED			943072-1
B	.184	.200 DIA			943072-2
C	.180	.200 DIA			
D	.176	.200 DIA			

REMARKS	NO	REV
	TO APPLY TERMINAL	
APPL USED ON MACHINE PART NO	MACH SERIAL NO	DISTRIBUTION
CUSTOMER NAME	APPL SERIAL NO	ORIGINAL
ADDRESS	PURCHASE ORDER	CUSTOMER COPY
CITY	ENG APP	FIELD ENG COPY

CRIMP	SIZE	TYPE	FEED	APPL INST
WIRE	-	-	-	A1 8039
INSUL	.220	F		
WIRE RANGE	-	INSULATION RANGE	MACHINE NO	
		.200 DIA	565435-5	
REMARKS				
AMP-O-ELECTRIC LOOSE PIECE				

BI	REACT,0150-7199-96	CE	9-96	CHK 10-17-89	REL 10/19/89	LOC A	D NO 567347-1	REV B1
B	OBS,0150-6782-96	CE	4-96	P.MATHIAS	B. WOLFE			
A1	ECN 0150-4559-93	CE	6/93	C. ERISMAN	BEITRICH			
A	ECN A-350492	LK	1-92					