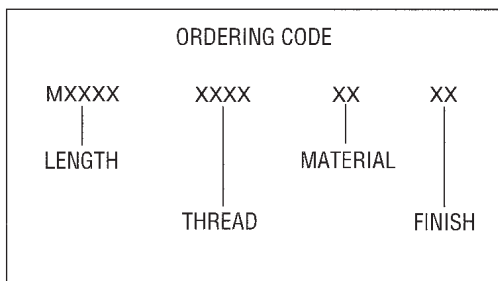
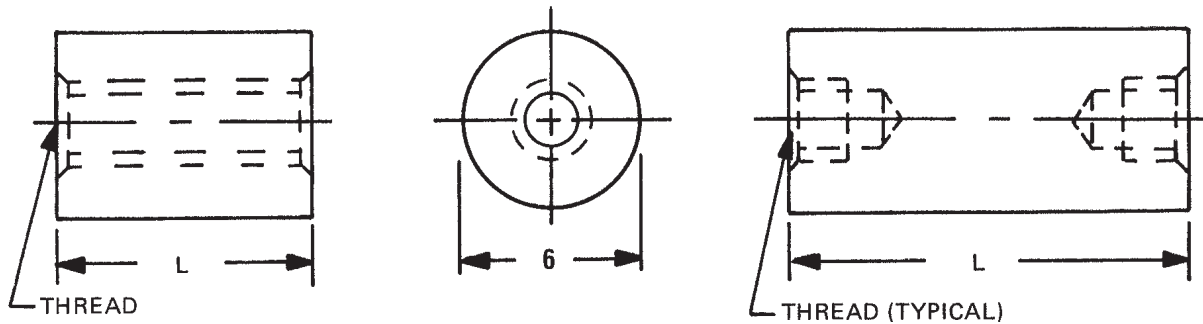


# 6mm ROUND FEMALE STANDOFFS



See page 7M for thread depth chart  
 See page 6M for finish codes  
 For non-standard parts contact Sales Office

LENGTH	PART NO.
3	<b>M1050</b>
4	<b>M1051</b>
5	<b>M1052</b>
6	<b>M1053</b>
7	<b>M1054</b>
8	<b>M1055</b>
9	<b>M1056</b>
10	<b>M1057</b>
11	<b>M1058</b>
12	<b>M1059</b>
13	<b>M1060</b>
14	<b>M1061</b>
15	<b>M1062</b>
16	<b>M1063</b>
17	<b>M1064</b>
18	<b>M1065</b>

LENGTH	PART NO.
19	<b>M1066</b>
20	<b>M1067</b>
21	<b>M1068</b>
22	<b>M1069</b>
23	<b>M1070</b>
24	<b>M1071</b>
25	<b>M1072</b>
28	<b>M1073</b>
31	<b>M1074</b>
34	<b>M1075</b>
37	<b>M1076</b>
40	<b>M1077</b>
43	<b>M1078</b>
46	<b>M1079</b>
49	<b>M1080</b>
52	<b>M1081</b>

THREAD	CODE
M3x0.5	3005
M3.5x0.6	3506
M4x0.7	4007

MATERIAL	CODE	RoHS
Aluminum	AL	YES
Brass	B	YES
Stainless Steel	SS	YES
Steel	S	YES
Nylon	N	YES