

NOTES:

- MATERIAL: RoHS COMPLIANT PER EU DIRECTIVE 2011/65/EU AND AMENDMENTS.
 - BULKHEAD: ENGINEERING THERMOPLASTIC, COLOUR: BLACK
 - HOOD COVERS, BODY, SLIDE & END CAP : PBT GLASS REINFORCED, COLOUR: BLACK
 - HOOD LOCK: PBT GLASS REINFORCED, COLOUR: RED
 - GASKETS & GROMMET: SILICONE RUBBER, COLOUR: BLACK
 - PLUG SHIELD: COPPER ALLOY, NICKEL PLATED
 - PLUG INSERTS: CLEAR POLYCARBONATE, UL94V-2
 - PLUG CONTACTS: COPPER ALLOY PLATED WITH GOLD (SEE ORDERING CODE) OVER 1.27µm (50µ") MINIMUM NICKEL ON THE MATING AREA
 - CABLE: HDPE INSULATED, 4X2 TWISTED PAIR AWG 24/7 COPPER, WITH PVC JACKET
- CURRENT RATING: 1.5 AMPERES PER CONTACT
- OPERATING TEMPERATURE -40° TO +80°C.
- DIELECTRIC WITHSTANDING VOLTAGE: 1000V AC rms
- INSULATION RESISTANCE: 500 MEGOHMS MINIMUM.
- NDH-R5AX-AXXA PARTS WILL PROVIDE AN IP67 SEALED SOLUTION WITH PUSH/PULL MATING FOR MODULAR JACK ETHERNET APPLICATIONS. THE IP67 RATING APPLIES IN THE MATED CONDITION FOR BOTH THE ENCLOSURE AND THE MATING INTERFACE.
- FOR THE PCB MOUNTED MODULAR JACK, SEE AMPHENOL DRAWING P-RJULE-4X183-01. THE JACK IS AN 8 CONTACT, SHIELDED, TAB DOWN, ULTRA LOW PROFILE RIGHT ANGLE DESIGN CONNECTOR.
- CABLE ASSEMBLIES ARE INDIVIDUALLY PACKED WITH AN EQUAL NUMBER OF BULKHEADS PER CARTON. QUANTITY PER CARTON VARIES WITH CABLE LENGTH.
- TO ORDER PARTS SEPARATELY, REFER TO AMPHENOL DRAWINGS P-NDH-N200 FOR THE BULKHEAD, P-NDH-R100 FOR THE HOOD AND P-NDH-R4XX-AXXA FOR THE HOOD & CABLE ASSEMBLY.

ORDERING CODE: NDH - R 5 A X - A X X A

SERIES, INDUSTRIAL SQUARE
PUSH/PULL DESIGN

RJ45, TAB DOWN

KIT CONFIGURATION:
5 = BULKHEAD, HOOD + CABLE ASSY

PLUG STYLE
A = 8 CONTACTS, CAT 5e, UN-SHIELDED

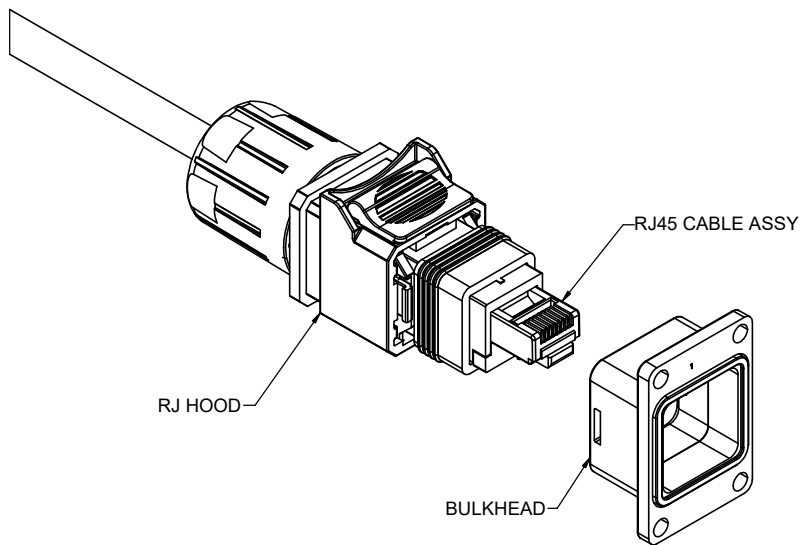
PLATING FOR RJ PLUG MATING AREA
4 = 1.27µm (50µ") GOLD
6 = 0.38µm (15µ") GOLD

OPPOSITE END CABLE PIGTAIL

8 WIRE CABLE, CAT 5e

CABLE LENGTH (DIMENSION 'A')	
	LENGTH IN CM
20 TO 99	
A0 TO A9	1 METER + 0 TO 9 DECIMETERS
B0 TO B9	2 METERS + 0 TO 9 DECIMETERS
C0 TO C9	3 METERS + 0 TO 9 DECIMETERS
D0 TO D9	4 METERS + 0 TO 9 DECIMETERS
E0 TO E9	5 METERS + 0 TO 9 DECIMETERS
F0 TO F9	6 METERS + 0 TO 9 DECIMETERS
G0 TO G9	7 METERS + 0 TO 9 DECIMETERS
H0 TO H9	8 METERS + 0 TO 9 DECIMETERS
J0 TO J9	9 METERS + 0 TO 9 DECIMETERS
K0 TO K9	10 METERS + 0 TO 9 METERS
L0 TO L9	20 METERS + 0 TO 9 METERS
M0 TO M9	30 METERS + 0 TO 9 DECAMETERS

CABLE LENGTH ORDERING CODE EXAMPLES:
75cm = 75 6.3m = F3 25m = L5 80m = M5



UNLESS SPECIFIED OTHERWISE	DRAWN	P. GOBUI	JAN12/22
PRIMARY UNITS MILLIMETRES	CHECKED	K. LAMBIE	JAN14/22
SECONDARY INCHES	M.E. APP'D		
REFERENCE IN PARENTHESES	Q.A. APP'D		
GENERAL TOLERANCES	DWG APPR.		
1 DECIMAL PLACE	ENG. REL. NO.	EAR 14988	
2 DECIMAL PLACES	REF.		
3 DECIMAL PLACES	THIRD ANGLE PROJECTION		
ANGULAR DEGREES	DO NOT SCALE DRAWING		

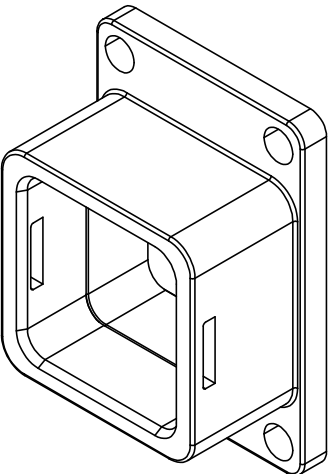
Amphenol Canada Corp.
Commercial Products

NDH SERIES RJ HOOD WITH BULKHEAD & PIGTAIL CABLE ASS'Y, IP67 RATING, CAT 5e PERFORMANCE, PLUG TAB DOWN, RoHS COMPLIANT

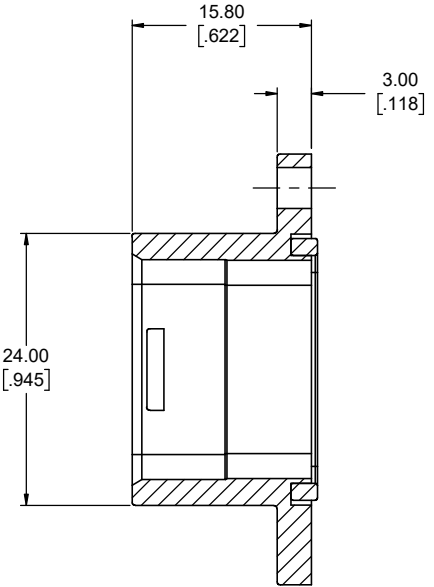
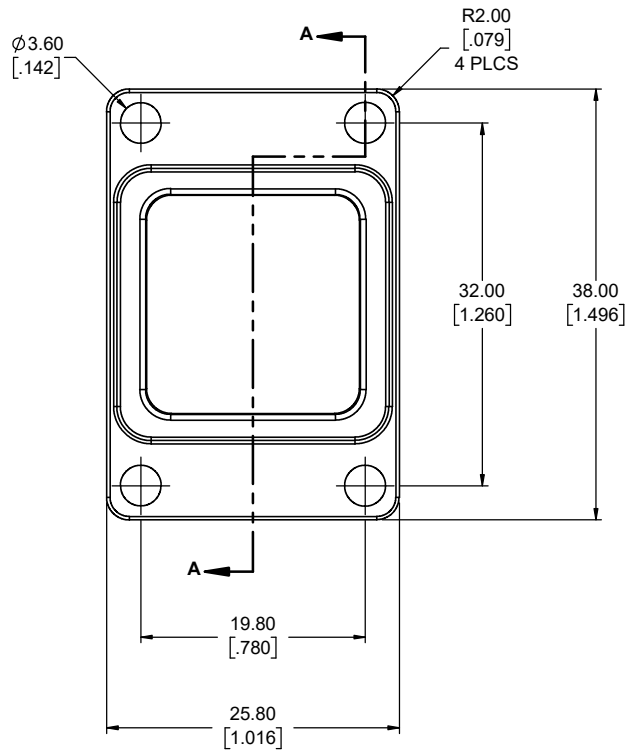
DWG. NO. **P-NDH-R5AX-AXXA** REV **C**

CODE ID NO. 03554 DWG SIZE: X SCALE: 2:1 SHEET 1 OF 4

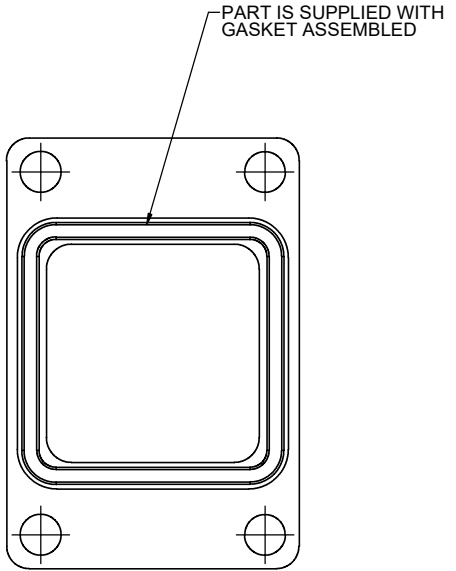
REVISIONS			
REV	DESCRIPTION, ECN, EAR NO.	DATE	APP'D
B	PRODUCT DRAWING (EAR 14988)	JAN14/22	K.L.
C	PRODUCT DRAWING (EAR 14988)	NOV10/22	K.L.



BULKHEAD



SECTION A-A



UNLESS SPECIFIED OTHERWISE	DRAWN	P. GOBUI	JAN12/22
PRIMARY UNITS MILLIMETRES	CHECKED	K. LAMBIE	JAN14/22
SECONDARY INCHES	M.E. APP'D		
REFERENCE IN PARENTHESES	Q.A. APP'D		
GENERAL TOLERANCES	DWG APPR.		
1 DECIMAL PLACE	ENG. REL. NO.	EAR 14988	
2 DECIMAL PLACES	REF.		
3 DECIMAL PLACES	THIRD ANGLE PROJECTION		
ANGULAR DEGREES	DO NOT SCALE DRAWING		

Amphenol Canada Corp.
Commercial Products

NDH SERIES RJ HOOD WITH BULKHEAD & PIGTAIL CABLE ASS'Y, IP67 RATING, CAT 5e PERFORMANCE, PLUG TAB DOWN, RoHS COMPLIANT

DWG. NO. **P-NDH-R5AX-AXXA** REV **C**

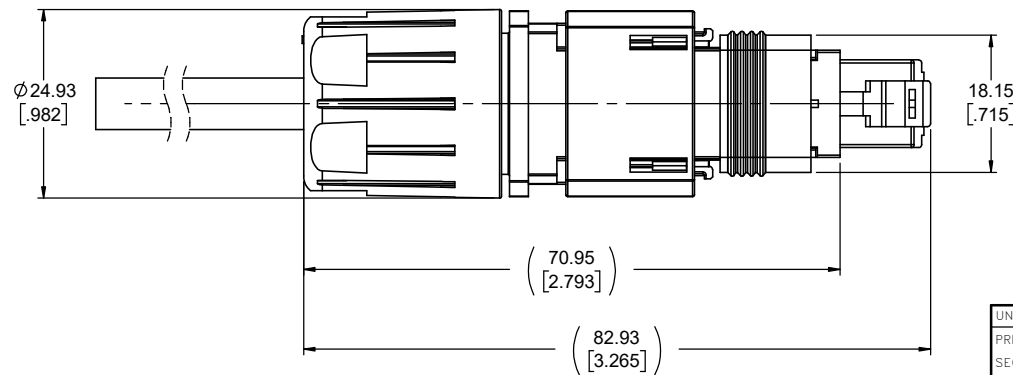
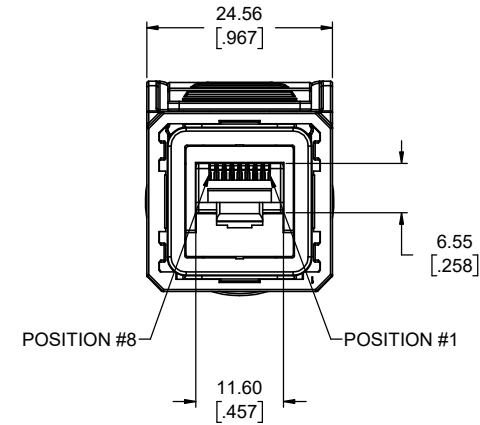
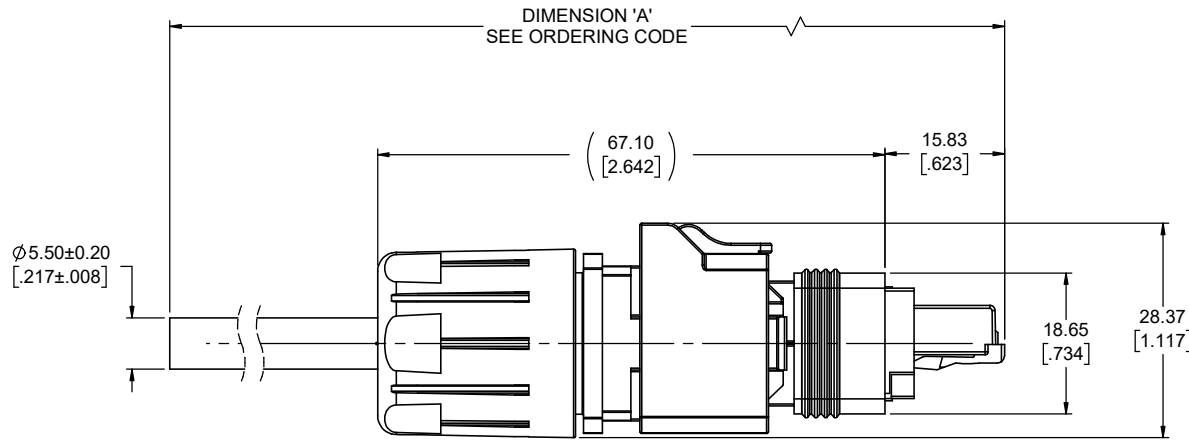
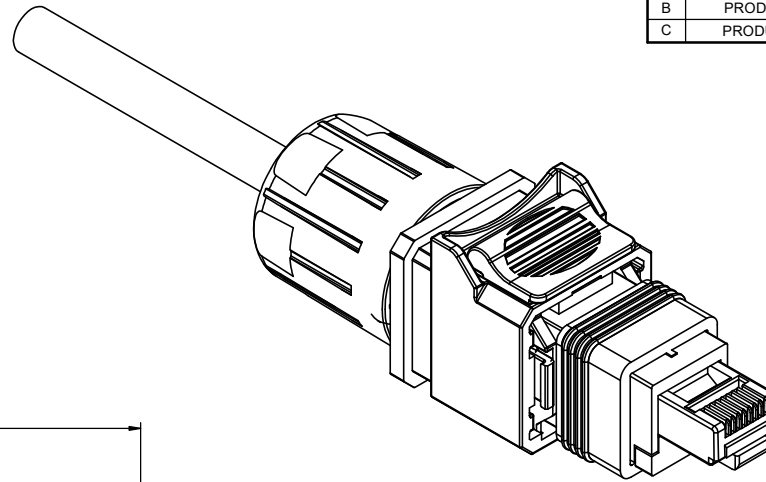
CODE ID NO. 03554 | DWG SIZE: X | SCALE: 3:1 | SHEET 2 OF 4

THIS DOCUMENT CONTAINS PROPRIETARY INFORMATION AND SUCH INFORMATION MAY NOT BE DISCLOSED TO OTHERS FOR ANY PURPOSE OR USED FOR MANUFACTURING PURPOSES WITHOUT WRITTEN PERMISSION FROM AMPHENOL CANADA CORP.



HOOD & CABLE ASSEMBLY

REVISIONS			
REV	DESCRIPTION, ECN, EAR NO.	DATE	APP'D
B	PRODUCT DRAWING (EAR 14988)	JAN14/22	K.L.
C	PRODUCT DRAWING (EAR 14988)	NOV10/22	K.L.



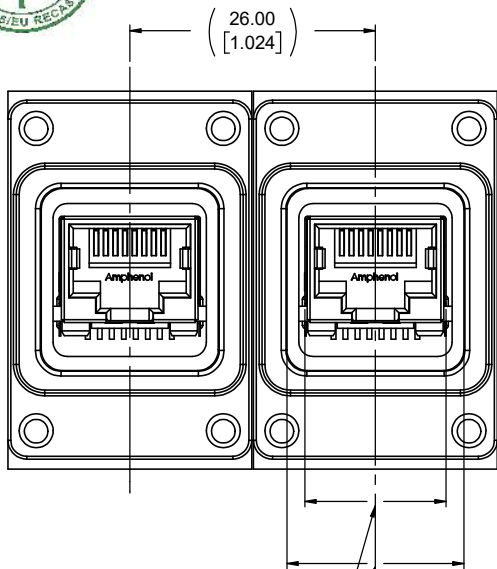
UNLESS SPECIFIED OTHERWISE	DRAWN	P. GOBUI	JAN12/22
PRIMARY UNITS MILLIMETRES	CHECKED	K. LAMBIE	JAN14/22
SECONDARY INCHES	M.E. APP'D		
REFERENCE IN PARENTHESES	Q.A. APP'D		
GENERAL TOLERANCES	DWG APPR.		
1 DECIMAL PLACE	ENG. REL. NO.	EAR 14988	
2 DECIMAL PLACES	REF.		
3 DECIMAL PLACES	THIRD ANGLE PROJECTION		
ANGULAR DEGREES	DO NOT SCALE DRAWING		

Amphenol Canada Corp. Commercial Products	
NDH SERIES RJ HOOD WITH BULKHEAD & PIGTAIL CABLE ASS'Y, IP67 RATING, CAT 5e PERFORMANCE, PLUG TAB DOWN, RoHS COMPLIANT	
DWG. NO.	REV
P-NDH-R5AX-AXXA	C
CODE ID NO. 03554	DWG SIZE: X
SCALE: 2:1	SHEET 3 OF 4

THIS DOCUMENT CONTAINS PROPRIETARY INFORMATION AND SUCH INFORMATION MAY NOT BE DISCLOSED TO OTHERS FOR ANY PURPOSE OR USED FOR MANUFACTURING PURPOSES WITHOUT WRITTEN PERMISSION FROM AMPHENOL CANADA CORP.



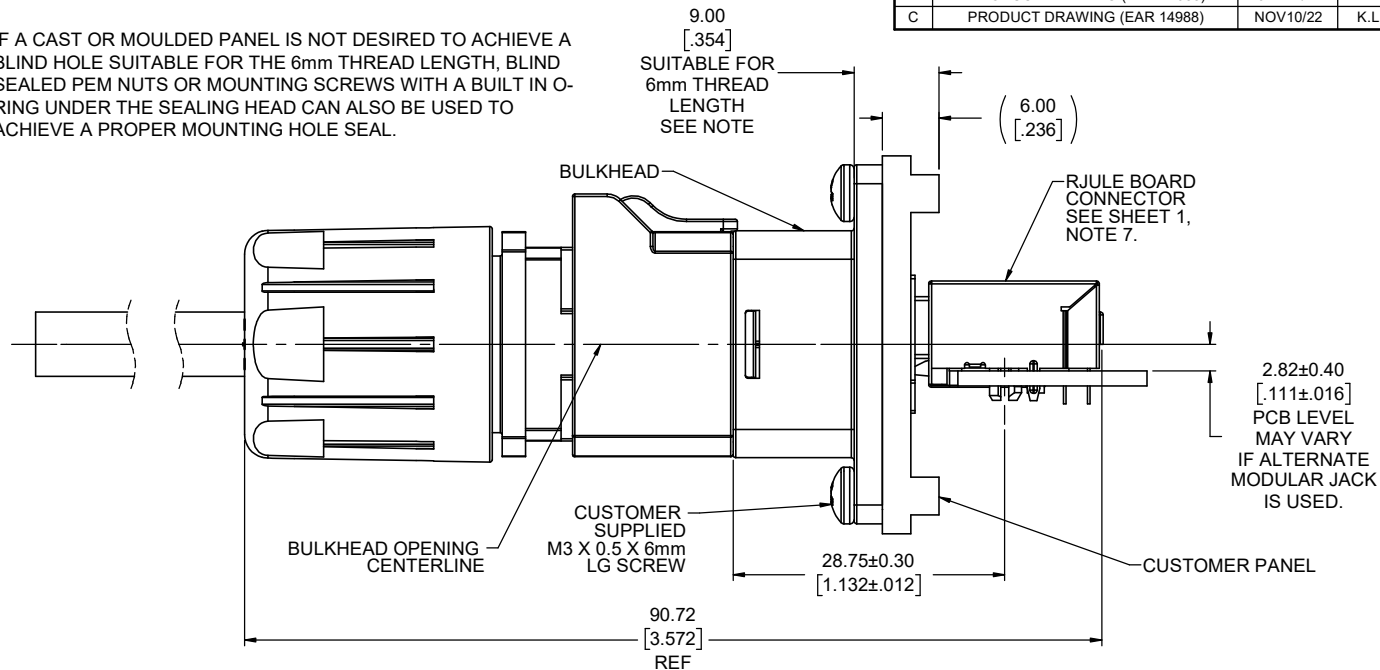
BULKHEAD PORT SPACING



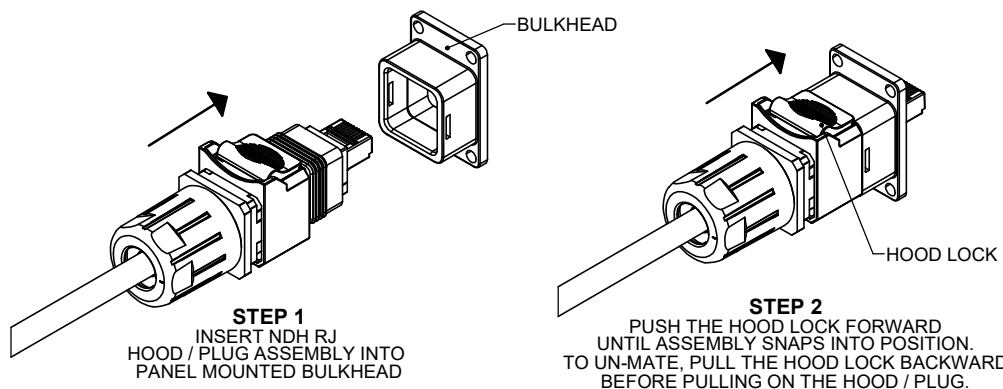
±0.6mm CENTERING OF THE BOARD CONNECTOR WITH BULKHEAD CAVITY

APPLICATION NOTE:

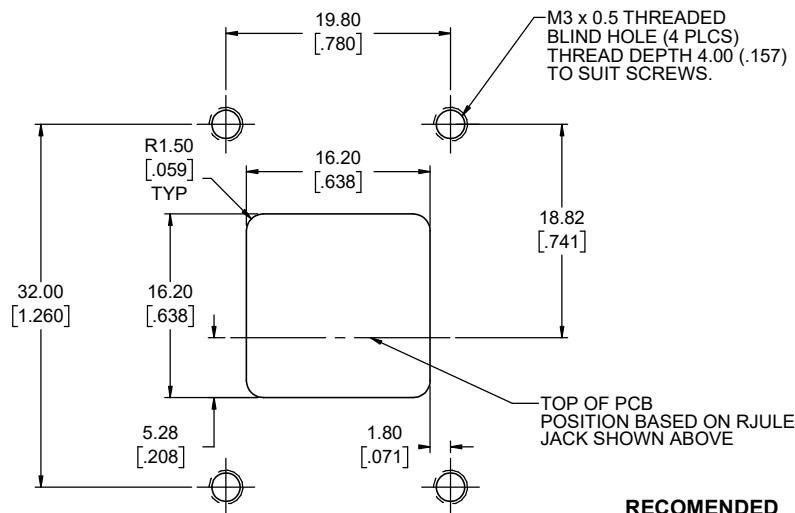
IF A CAST OR MOULDED PANEL IS NOT DESIRED TO ACHIEVE A BLIND HOLE SUITABLE FOR THE 6mm THREAD LENGTH, BLIND SEALED PEM NUTS OR MOUNTING SCREWS WITH A BUILT IN O-RING UNDER THE SEALING HEAD CAN ALSO BE USED TO ACHIEVE A PROPER MOUNTING HOLE SEAL.



APPLICATION VIEWS



MATING PROCEDURE



RECOMENDED PANEL LAYOUT
OUTSIDE PANEL VIEW

REVISIONS			
REV	DESCRIPTION, ECN, EAR NO.	DATE	APP'D
B	PRODUCT DRAWING (EAR 14988)	JAN14/22	K.L.
C	PRODUCT DRAWING (EAR 14988)	NOV10/22	K.L.

UNLESS SPECIFIED OTHERWISE	DRAWN	P. GOBUI	JAN12/22
PRIMARY UNITS MILLIMETRES	CHECKED	K. LAMBIE	JAN14/22
SECONDARY UNITS INCHES	M.E. APP'D		
REFERENCE IN PARENTHESES	Q.A. APP'D		
GENERAL TOLERANCES	DWG APPR.		
1 DECIMAL PLACE	ENG. REL. NO.	EAR 14988	
2 DECIMAL PLACES	REF.		
3 DECIMAL PLACES	THIRD ANGLE PROJECTION		
ANGULAR DEGREES	DO NOT SCALE DRAWING		

Amphenol Canada Corp. Commercial Products	
NDH SERIES RJ HOOD WITH BULKHEAD & PIGTAIL CABLE ASS'Y, IP67 RATING, CAT 5e PERFORMANCE, PLUG TAB DOWN, RoHS COMPLIANT	
DWG. NO.	REV
P-NDH-R5AX-AXXA	C
CODE ID NO. 03554	DWG SIZE: X SCALE: X SHEET 4 OF 4