

**NOTES:**

1. METALSHELLS: STEEL; min. 315µin TIN over 40-80µin NICKEL
2. INSULATORS: PBT GF UL 94 V-0; BLACK
3. CONTACTS: COPPER ALLOY  
PLATING: GOLD FLASH over NICKEL
4. THREADED REAR SPACERS / FRONT THREADED LOCKS:  
COPPER ALLOY; min. 200µin TIN over 80µin NICKEL
5. SLEEVES: COPPER ALLOY; min. 200µin TIN over 80µin NICKEL
6. MAXIMUM TORQUE VALUE FOR THREAD: 6 in.LB
7. P.C.B. HOLE DRILLINGS ON SHEET 2
8. CONNECTOR IS PART MARKED: 164A12199X CONEC ABC

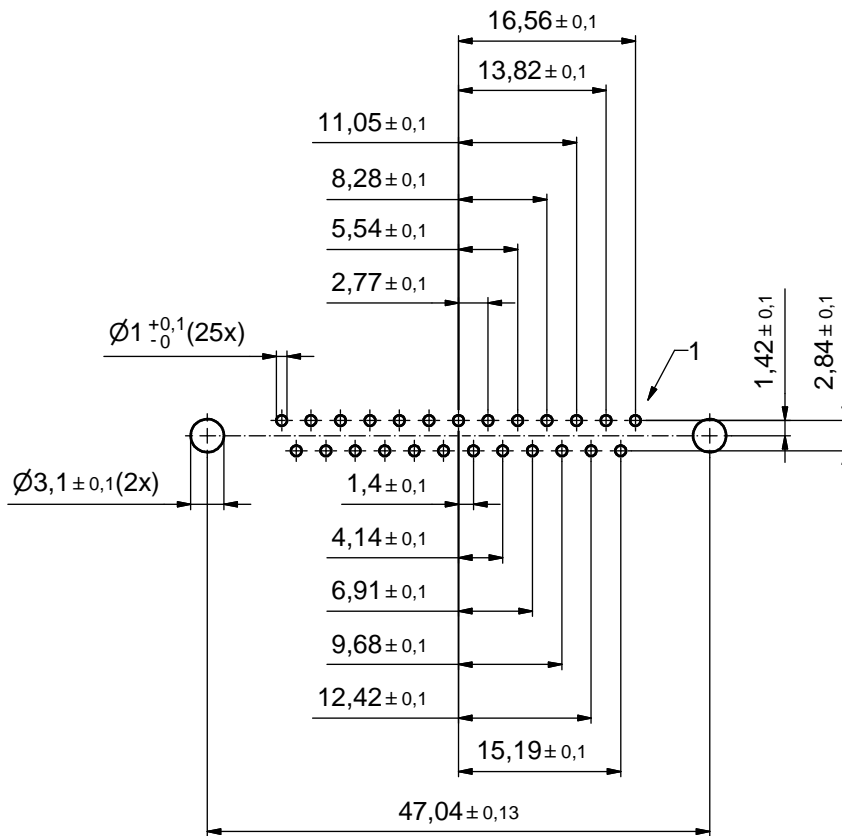
Directive 2002/95/EC RoHS compliant

THIS DRAWING MAY NOT BE COPIED OR REPRODUCED IN ANY WAY, AND MAY NOT BE PASSED ON TO A THIRD PARTY WITHOUT WRITTEN PERMISSION. OWNERSHIP AND COPYRIGHT OF CONEC GmbH

DO NOT ALTER CAD DRAWING BY HAND

tolerance		dim. in mm	scale: 2:1 (5:1)	
			material: see notes	
date	name		title: <b>D-SUB FEMALE</b> 25pos. SOLDER PIN STRAIGHT with threaded rear spacer and front threaded lock	
drawn	16.03.11	Schmidt		
appd.	16.03.11	Fischer		
norm				
d-old			dwg no: Inventor 10	DIN-A3
a	Origin	<b>CONEC</b>		sh: 1
rev.	description	date	name	part no: 164A12199X

title: <b>D-SUB FEMALE</b> 25pos. SOLDER PIN STRAIGHT with threaded rear spacer and front threaded lock	
dwg no: Inventor 10	DIN-A3
sh: 1	
part no: 164A12199X	



**P.C.B. HOLE DRILLINGS**  
(P.C.B. TOP SIDE)

THIS DRAWING MAY NOT BE COPIED OR REPRODUCED IN ANY WAY, AND MAY NOT BE PASSED ON TO A THIRD PARTY WITHOUT WRITTEN PERMISSION. OWNERSHIP AND COPYRIGHT OF CONEC GmbH DO NOT ALTER CAD DRAWING BY HAND				tolerance		scale: 2:1	
				dim. in mm		material: see sheet 1	
				date	name	title: <b>P.C.B. HOLE DRILLINGS</b> D-SUB FEMALE 25pos. SOLDER PIN STRAIGHT with threaded rear spacer and front threaded lock	
				drawn 16.03.11	Schmidt		
				appd. 16.03.11	Fischer		
				norm			
				d-old		dwg no: Inventor 10	DIN-A3
	a	Origin		<b>CONEC</b> <sup>®</sup>		16K1A2800	sh: 2
	rev.	description	date			name	part no: see sheet 1