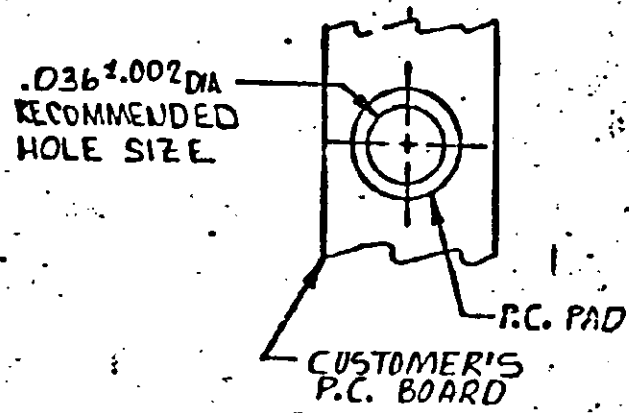
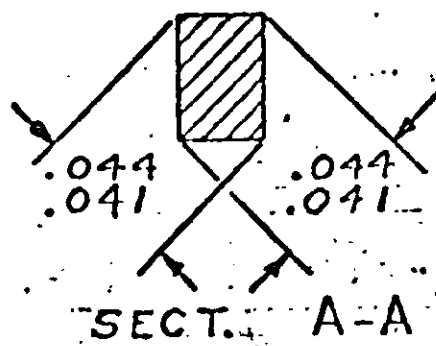
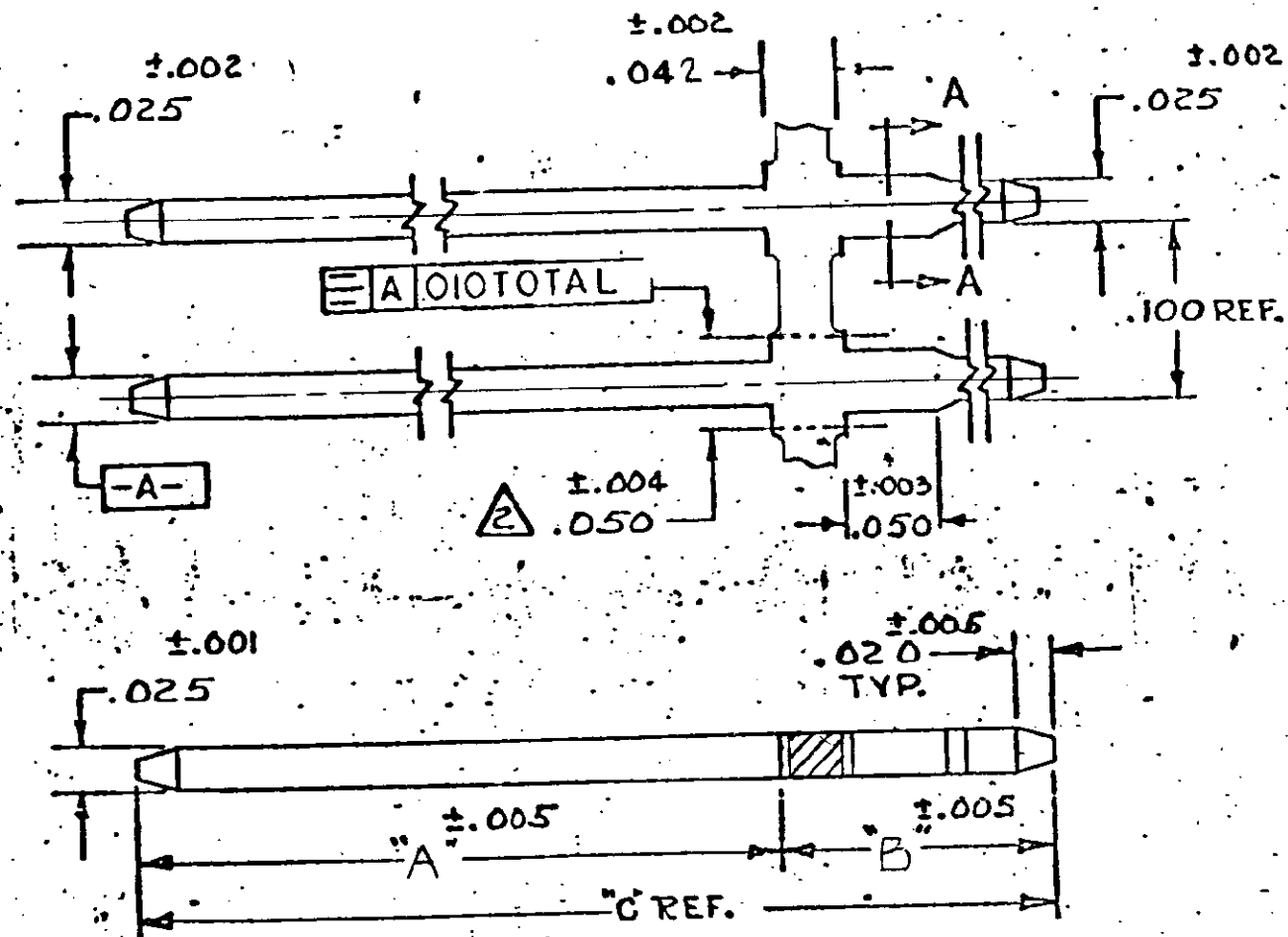


DRAWING MADE IN AMERICAN PROJECTION

© 1974 BY AMP INCORPORATED. ALL RIGHTS RESERVED. AMP PRODUCTS COVERED BY PATENTS AND/OR PATENTS PENDING.

REVISIONS

ZONE	LTR	DESCRIPTION	DATE	APPROVED
0		RELEASED WAS 5166-333-70	BAW 3-15-74	
✓	D	ADDED -I PER ECN 617	DM 7-12-74	BAW
	O2	ATTN: -3-A PER ECN 637	DM 7-30-74	BAW
	A	ADDED 1-0 & .042 ±.002 WAS .040 ±.002 ECN-841 & 835	BAW 2-4-75	DM
	A1	REVERSED A & B CALLOUTS ECN-1047	BAW 9-17-75	DM
	A2	ADDED 1--1 thru 1--5 ECN 1559 & 1561	8-25-76	DM
	A3	ADDED 1--B ECN 3748	12-8-80	DM
	A4	ADDED 2--D ECN 3774	DF 1-22-81	DM
	B	REV ECN 229	DM 5-10-84	DM
✓	C	REV ECN 2515	DM 7-10-87	RF
✓	D	REV LOC & DIST AD-4171	11-28-89	BF



- ▲ .000160 BRIGHT TIN OVER .000030 NICKEL.
- ▲ APPLICATOR CUT-OFF DIMENSION.
- ▲ .000015 GOLD OVER .000050 NICKEL
- ▲ .000030 GOLD OVER .000050 NICKEL
- ▲ .000050 GOLD OVER .000050 NICKEL
- ▲ OBSOLETE PART NO

▲	.560	.395	.165	▲	Z-87307-0
▲	.443	.278	.165	▲	1-87307-8
▲	.645	.480	.165	▲	1-87307-5
▲	.505	.340	.165	▲	1-87307-3
▲	.508	.278	.230	▲	1-87307-1
▲	.835	.670	.165	▲	1-87307-0
▲	.533	.278	.255	▲	87307-4
▲	.628	.278	.350	▲	87307-3
▲	.443	.278	.165	▲	87307-2
▲	.615	.450	.165	▲	87307-1
	C	A	B		FINISH PART NO.

UNLESS OTHERWISE SPECIFIED, DIMENSIONS ARE IN INCHES TOLERANCES ON : DECIMALS ±.005 ANGLES ±	CONTRACT NO.	AMP INCORPORATED HARRISBURG, PENNSYLVANIA	
	DR <i>B. Wolfe</i> 2-4-74	NAME	
MATERIAL BRASS	CHK <i>S Baker</i> 3-18-74	POST, .025 SQ., MDD II, UNINSULATED, BRASS.	
	APPD <i>S Baker</i> 3-18-74	SIZE	CODE IDENT NO. NUMBER
	REL <i>R. Clark</i> 3-18-74	C	00779 87307
	DSGN APPD	SCALE	SHEET
	OTHER APPD		

CUSTOMER DRAWING

NUMBER 87307

PRINT DIST 39 (D)