

MODEL NUMBER
TRM-2092-MC-SMA-02

NOTES:

1.0 ELECTRICAL SPECIFICATIONS:

1.1 FREQUENCY RANGE: DC to 8.0 GHz.

1.2 MAXIMUM INPUT POWER:
2 WATTS AT +25°C
1 WATT AT +125°C

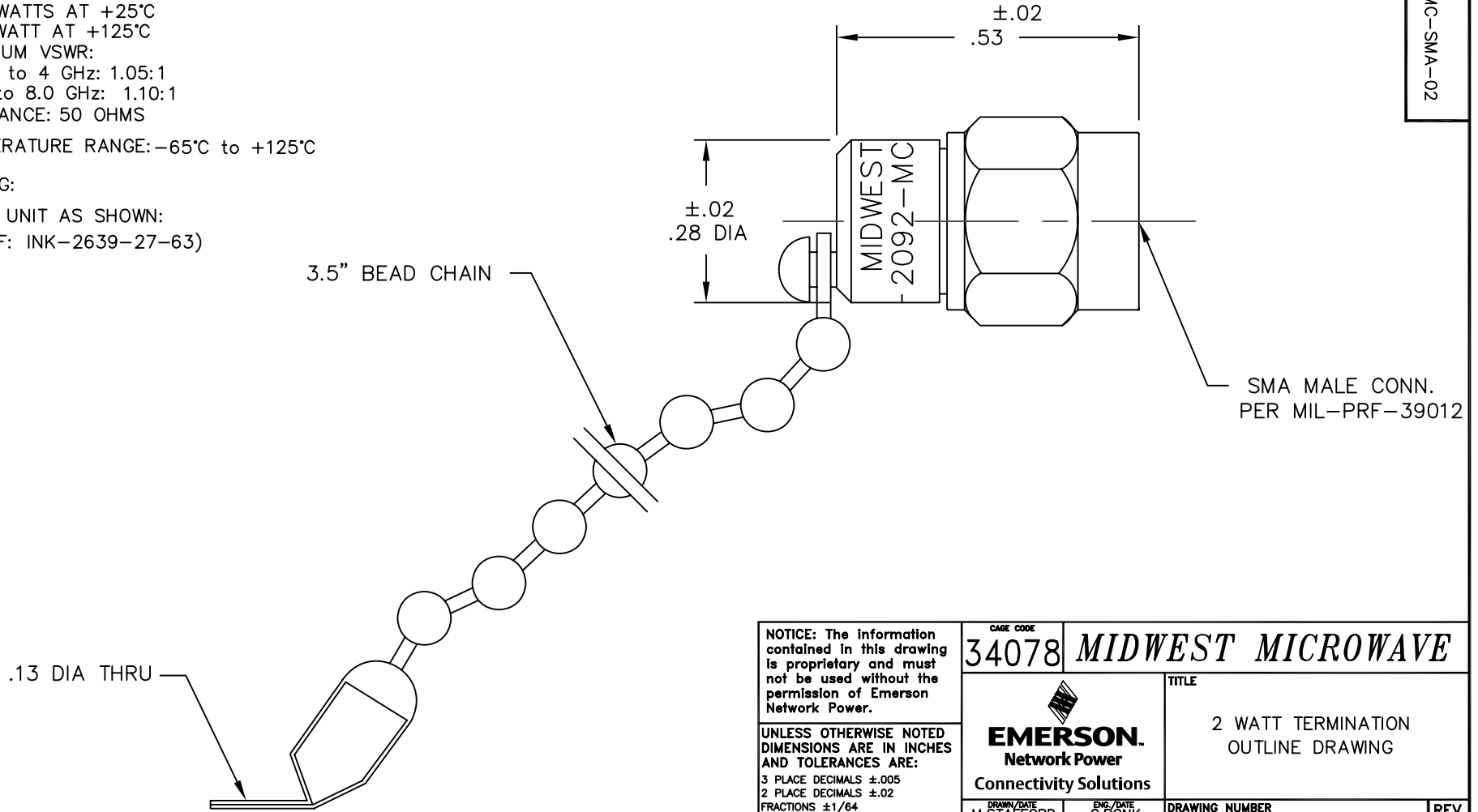
1.3 MAXIMUM VSWR:
DC to 4 GHz: 1.05:1
4 to 8.0 GHz: 1.10:1

1.4 IMPEDANCE: 50 OHMS

1.5 TEMPERATURE RANGE: -65°C to +125°C

2.0 MARKING:

2.1 MARK UNIT AS SHOWN:
(REF: INK-2639-27-63)



REV.	DESCRIPTION	DATE
-	RELEASED	8/14/95
-1	ADDED TITLEBLOCK	10/31/05

NOTICE: The information contained in this drawing is proprietary and must not be used without the permission of Emerson Network Power.

UNLESS OTHERWISE NOTED DIMENSIONS ARE IN INCHES AND TOLERANCES ARE:
3 PLACE DECIMALS ±.005
2 PLACE DECIMALS ±.02
FRACTIONS ±1/64
PARALLELITY: T.I.R. _____
FLATNESS: T.I.R. _____
CONCENTRICITY: T.I.R. _____
ANGLES AND PERPENDICULARITY: ±1'

CAGE CODE 34078		MIDWEST MICROWAVE	
		TITLE 2 WATT TERMINATION OUTLINE DRAWING	
		DRAWN/DATE M.STAFFORD 8/11/95	ENG./DATE C.BONK 8/14/95
DRAWING NUMBER TRM-2092-MC-SMA-02-01		REV. -1	
SCALE: 5=1		SHEET 1 of 1	