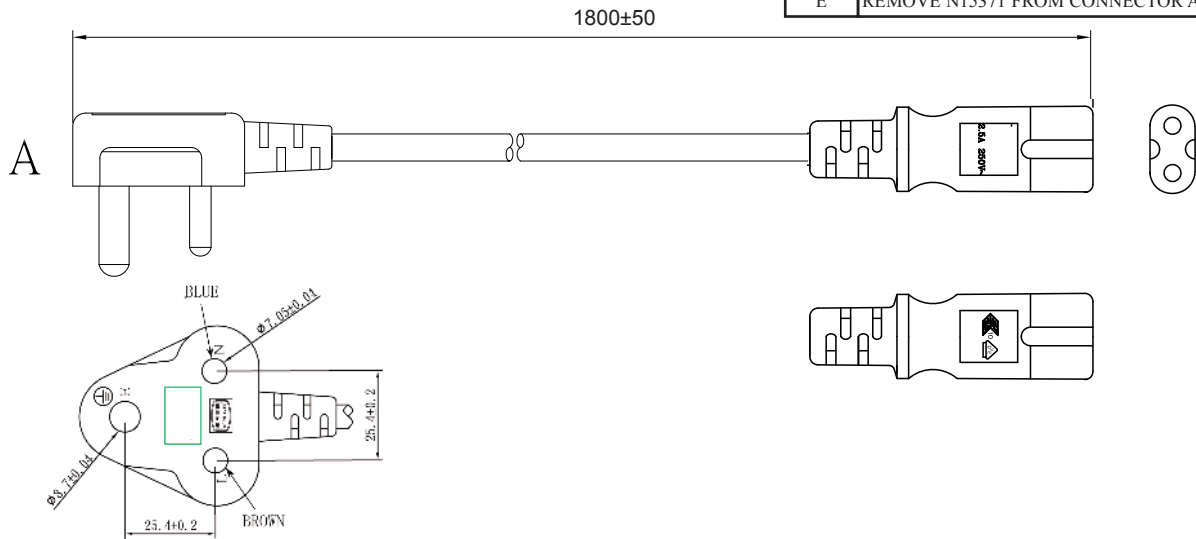


**PROPRIETARY INFORMATION:**  
 PROPRIETARY OF GLOBTEK, INC. ANY REPRODUCTION, DISCLOSURE OR USE OF THIS DRAWING, IN WHOLE OR IN PART, IS HEREBY PROHIBITED EXCEPT AS SPECIFIED IN WRITING BY GLOBTEK, INC.

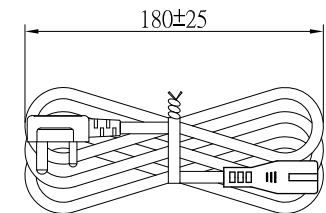
REVISION			
REV	DESCRIPTION	DATE	APPROVED
A	INITIAL RELEASE	03/21/00	BS
B	ADD ROHS, RFS. 14727, EM	10/02/08	BS
C	UPDATE DRAWING, ADD 'SABS', ADD PACKING, RFS.26398, SV	08/03/16	BS
D	UPDATE PLUG DIMENSIONS DRAWING, CHANGE RATING FROM 16A TO 2.5A, RFS.26590, SV	12/13/16	BS
E	REMOVE N15371 FROM CONNECTOR APPROVAL, RFS.27343, BS	05/21/19	BS



**GENERAL SPECIFICATIONS:**

- RATING: 2.5A / 250V AC
- CABLE TYPE / SIZE: H03VVH2-F, 2 x 0.75 mm<sup>2</sup>
- TEMPERATURE RATING: 75°C
- CONDUCTOR COLORS: BROWN / BLUE
- CABLE JACKET COLOR: BLACK
- OVERALL LENGTH (L): 1800 ± 50 mm
- END 'A' PLUG: BS 546
- END 'B' : IEC-320 / C7
- APPROVALS PLUG: SABS
- APPROVALS CABLE: VDE
- APPROVALS CONNECTOR: VDE

**PACKING:**  
 HANKED  
 L = 180 ± 25 mm



- NOTES:**
1. PLUG MUST BE MARKED WITH APPROVAL SYMBOLS OR FILE NUMBER(S).

**RELEASED**  
 By pudxc at 1:24 pm, May 23, 2019



**NOTES:**

1. CONNECTOR MUST BE MARKED WITH APPROVAL SYMBOLS OR FILE NUMBER(S).



Foot Note:  
 Globtek Inc. will not be liable for the safety and performance of these power product if unauthorized access and repair occurs. End user should consult the applicable UL, CSA or EN Standards for proper installation instruction.

Limitation of Use:  
 Globtek product are not authorized for use as mission critical components in life support, hazardous environment, nuclear or aircraft applications without prior written approval from the CEO of Globtek Inc.

Contents of this document are subject to change without prior notice

DASH NO.	PART NO	REV.	DESCRIPTION	NOTES
<b>TABULATION BLOCK</b>				
		<b>TOLERANCES:</b> DECIMALS ANGULAR .xx +/- 0.1 +/- 1° .xxx +/- .005		<b>GlobTek, Inc.</b> 186 Veterans Dr. Northvale, NJ 07647 Tel. 201-784-1000 Fax 201.784.0111 <b>www.globtek.com</b>
		MILLIMETERS ANGULAR .xx +/- 0.3 +/- 1° .xxx +/- .013		
INIT.BY: EM	DATE: 03/21/00	DWG TITLE: INTERNATIONAL DETACHABLE CORDSET		
DRAWN: NF	DATE: 03/21/00	FSCN No.: G, CC	SIZE: A	REV. E
APRVD: DMR	DATE: 03/21/00	SCALE: NONE	PART NO: <b>2084111M8703(R)</b>	SHEET 1/1