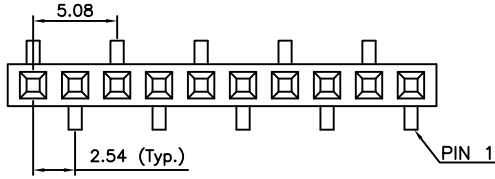
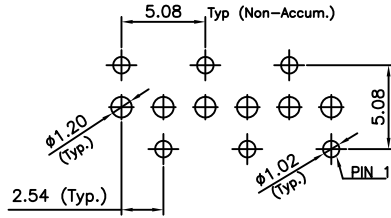


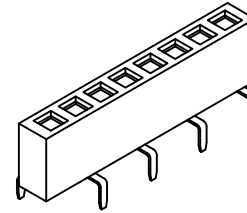
A
B
C
D
E
F
G
H



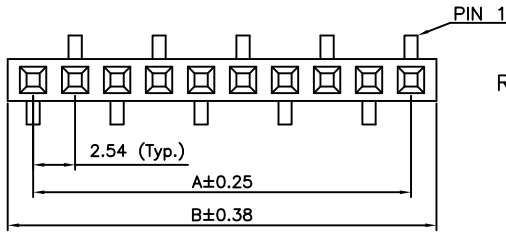
R1 TYPE



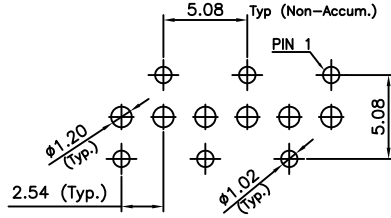
R1 TYPE



R1 TYPE

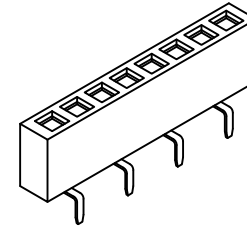


R2 TYPE

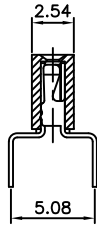
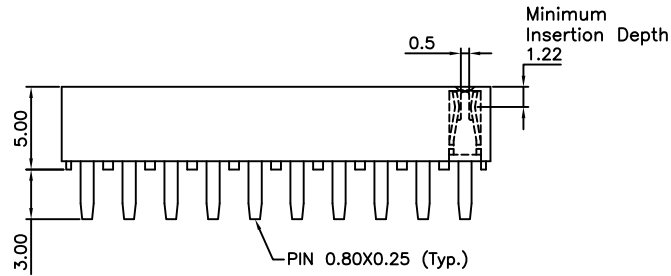


R2 TYPE

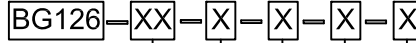
RECOMMENDED PCB LAYOUT



R2 TYPE



Ordering Grid



- No. of Contacts: 02 to 40
- A = Gold Flash All Over
- B = Selective Gold Flash Contact Area/ Tin On Tail
- C = Tin All Over
- G = 10μ" Gold Contact Area/Tin On Tail
- I = 30μ" Gold Contact Area/Tin On Tail
- Standard = Gold Flash All Over**

- Insulator Material:
 - N = Nylon 6T (Standard)**
 - L = LCP
- Type:
 - 1 = R1 Type
 - 2 = R2 Type

REQUEST SAMPLES AND QUOTATION

- Packing Options
- D = Tube (Standard)**
 - F = Tube with Film
 - G = Plastic Box
 - H = Tray
- For 2, 3, 4, 5, 6 and 7 contacts option H only.

SPECIFICATIONS 规格
 CURRENT RATING 电流额定值: 3 AMP
 INSULATOR RESISTANCE 绝缘电阻值: 1000 MΩ Min.
 CONTACT RESISTANCE 接触电阻值: 20mΩ Max.
 DIELECTRIC WITHSTANDING 耐电压: AC 600 V
 OPERATING TEMPERATURE 工作温度: -40°C TO +105°C
 CONTACT MATERIAL 端子物料: COPPER ALLOY
 INSULATOR MATERIAL 绝缘体物料:
 STANDARD 标准物料: POLYAMIDE 聚酰胺, NYLON 6T, UL 94-V0
 OPTIONS 可选物料: POLYESTER 聚酯, LCP, UL 94-V0
 SOLDERING PROCESS 可焊性:
 NYLON 6T (STANDARD 标准物料) -
 IR REFLOW 回流焊: 260°C for 10 sec.
 WAVE 波峰焊: 230°C for 5-10 sec.
 MANUAL SOLDER 人工焊接: 350°C for 3-5 sec
 LCP (OPTION 可选物料) -
 IR REFLOW 回流焊: 260°C for 10 sec.
 WAVE 波峰焊: 250°C for 5-10 sec.
 MANUAL SOLDER 人工焊接: 350°C for 3-5 sec
 MATES WITH 配套之母座 (SUBJECT TO PIN LENGTH 在端子长度适合的条件下):
 BG020 BG030 BG031 BG035 BG055
 BG060 BG075 BG080

CONTACTS	DIMENSIONS	
	A	B
02	2.54	5.58
03	5.08	8.12
04	7.62	10.66
05	10.16	13.20
06	12.70	15.74
07	15.24	18.28
08	17.78	20.82
09	20.32	23.36
10	22.86	25.90
11	25.40	28.44
12	27.94	30.98
13	30.48	33.52
14	33.02	36.06
15	35.56	38.60
16	38.10	41.14
17	40.64	43.68
18	43.18	46.22
19	45.72	48.76
20	48.26	51.30
21	50.80	53.84
22	53.34	56.38
23	55.88	58.92
24	58.42	61.46
25	60.96	64.00
26	63.50	66.54
27	66.04	69.08
28	68.58	71.62
29	71.12	74.16
30	73.66	76.70
31	76.20	79.24
32	78.74	81.78
33	81.28	84.32
34	83.82	86.86
35	86.36	89.40
36	88.90	91.94
37	91.44	94.48
38	93.98	97.02
39	96.52	99.56
40	99.06	102.10

By	BC	CM
DETAIL	DRAWING RELEASE	ECN: B2B packaging -001
REV DATE	A 17/04/07	B 19/10/11



Tolerances (Except as noted)	Part Number:-	Date:-
Dimensions in mm	BG126	17 APR 07
X, ± 0.30	Description:-	
X.X ± 0.20	2.54mm PITCH SOCKET, SINGLE ROW, THROUGH HOLE, VERTICAL, DUAL ENTRY	
X.XX ± 0.15	© THIS DRAWING IS CONFIDENTIAL AND MUST NOT BE COPIED OR DISCLOSED WITHOUT WRITTEN CONSENT	
X.XXX ± 0.10	Scale NTS	
X.° ± 5°	Revision B	
X' ± 2°	Material See Note	
XX' ± 1°	Drawn by BC	
XXX' ± 0.5°	E & OE	
Thrd Angle Projection	Sheet No. 1/1	

GCT

www.globalconnectortechology.com