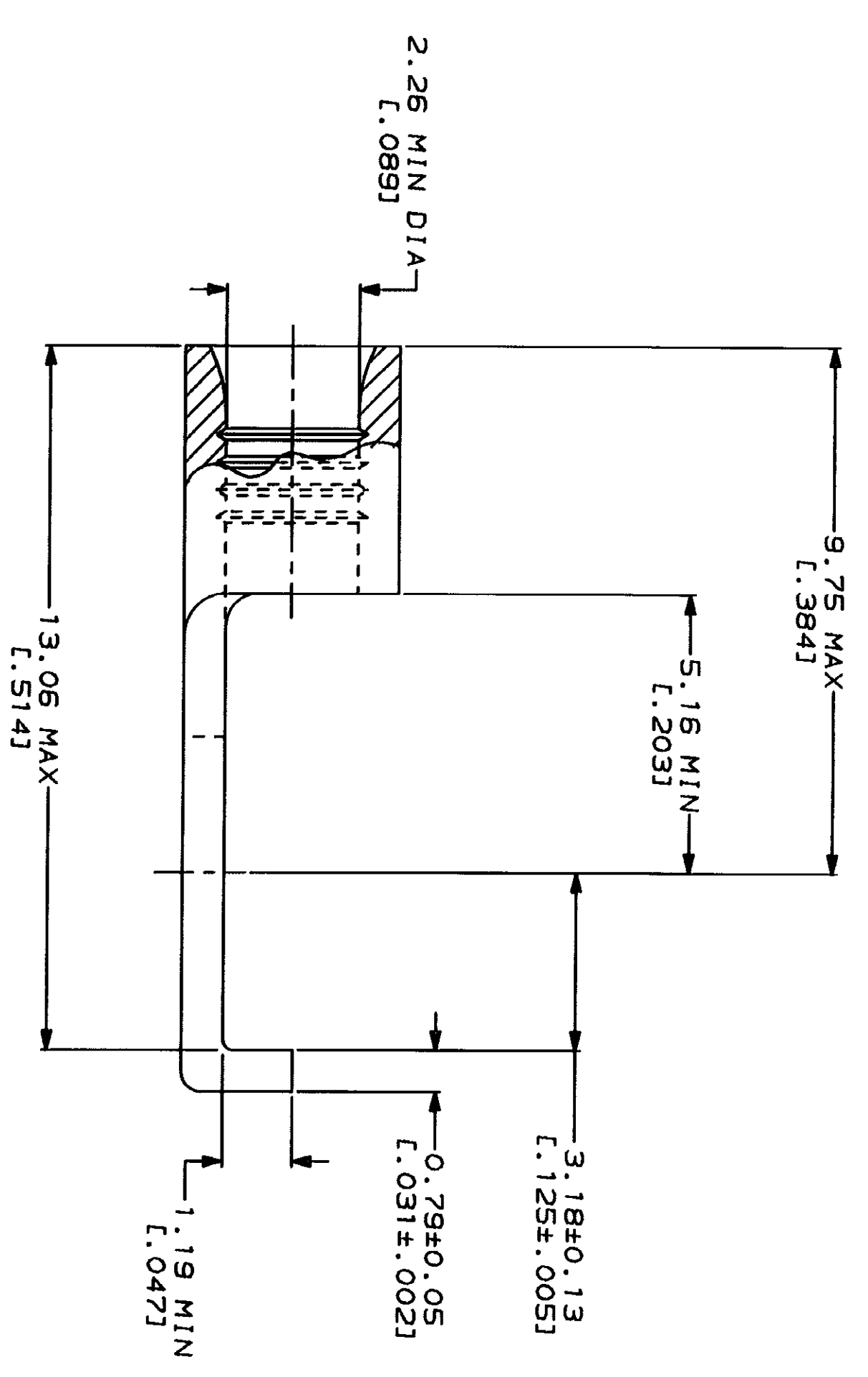
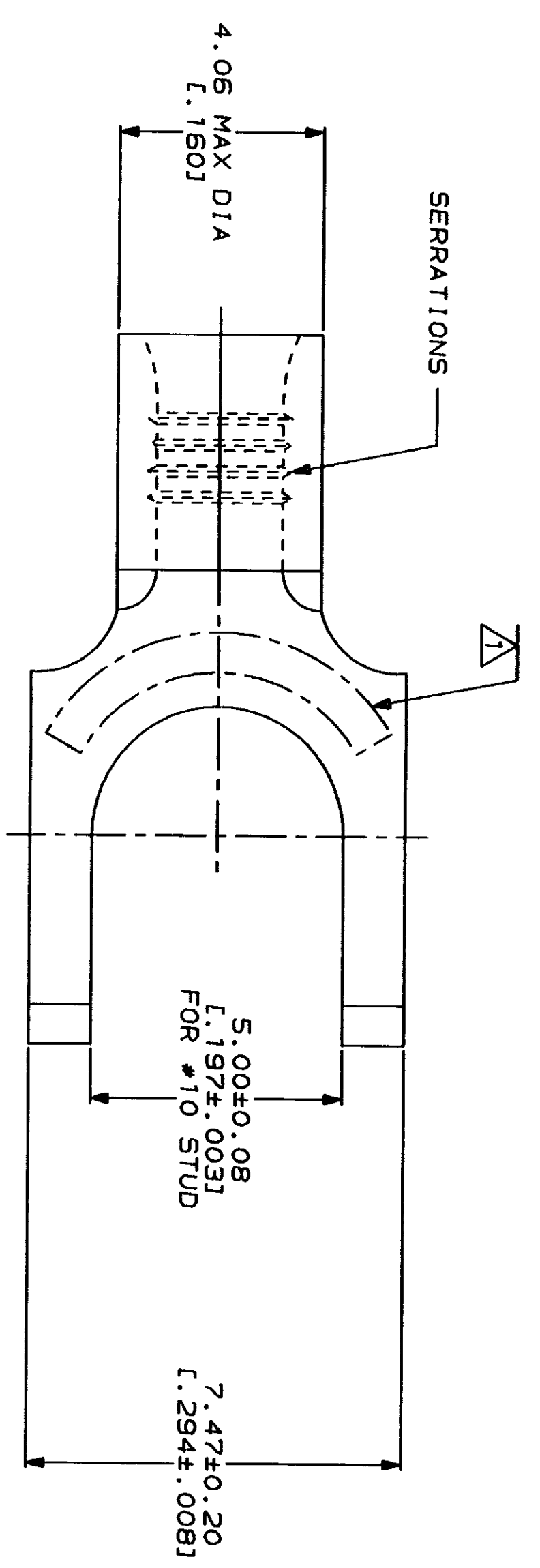


4
THIS DRAWING IS UNPUBLISHED. RELEASED FOR PUBLICATION BY AMP INCORPORATED. ALL INTERNATIONAL RIGHTS RESERVED. 19

LOC	DIST	ZONE	LTR	REVISIONS	DESCRIPTION	DATE	APPD
G	14			A	REVISED PER 0720-0230-93	2/28/94	DAF

METRIC
DIMENSIONS LISTED IN MM [INCHES]



AMP WIRE RANGE 16-14 AWG STRANDED	UL E13288 Listed
LR7189 Certified	MILITARY P/N AND CLASS
NOT CERTIFIED	NOT APPLICABLE

△ STAMP AMP 16-14* APPROX AS SHOWN

AMP INCORPORATED
CUSTOMER SERVICE SYSTEMS

FOR ADDITIONAL
PRODUCT INFORMATION OR
COPIES OF DRAWINGS
AND TECHNICAL DOCUMENTS
1-800-522-6752

FOR APPLICATION
TOOLING INFORMATION
1-800-722-1111

FOR ORDER ENTRY
1-800-526-5142

MAX RECOMMENDED OPERATING
TEMPERATURE:
170°C MAX

VOLTAGE RATING:
NOT APPLICABLE

WIRE CROSS SECTIONAL AREA RANGE:
1.04-2.62mm² [2,050-5,180] CIR MILS
STRANDED

DO NOT SCALE PRINT.
UNLESS SPECIFIED
DIMENSIONS IN mm [INCHES]
TOLERANCES ON:
1 PLG DEC ± .05
2 PLG DEC ± .02
3 PLG DEC ± .01
ANGLES
PATTERNAL

COPPER PER
ASTM B-152
ANNEALED

FINISH
TIN PLATE
0.00254 [L.000100] MIN
THK PER MIL-T-10727

DR 3-3-93
TA BRINKMAN

CHK 3-3-93
DA PATTERSON

APPD 3-3-93
DE MILLER

APPD 3-3-93
JL NECKLEY

PRODUCT SPEC

AMP
AMP Incorporated
Horshurstburg, PA 17105-3608

TERMINAL, FLANGED
SPADE, BUDGET

SIZE CAGE CODE DRAWING NO
SCALE 10:1 00779 320854

WEIGHT APPLICATION SPEC SHEET 1 OF 1