



ANATECH ELECTRONICS INC
RF & Microwave Filters & Products

1176 MHz / 1575 MHz Ceramic Bandpass Filter

Part Number: AM1176-1575D1150



ITEM	L1	L5/E5a
Center Frequency(F0)	1575.42 MHz	1176.45 MHz
-3dB Bandwidth (BW)	18 MHz min	18 MHz min
Insertion Loss (F0)	4.5 dB max	4.5 dB max
Ripple in (F0±5.0 MHz–Peak to Peak)	1.5 dB max	1.5 dB max
Return Loss (BW)	11 dB min	11 dB min
Attenuation	50 dBc min at 100~1535 MHz (F0-1475.42~F0-40.42 MHz)	50 dBc min at 100~1110 MHz (F0-1076.45~F0-66.45 MHz)
	40 dBc min at 1547 MHz (F0-28.42 MHz)	40 dBc min at 1120 MHz (F0-56.45 MHz)
	20 dBc min at 1599 MHz (F0+23.58 MHz)	20 dBc min at 1155MHz (F0-21.45 MHz)
	48 dBc min at 1607 MHz (F0+31.58 MHz)	20 dBc min at 1196 MHz (F0+19.55 MHz)
	48 dBc min at 1626.5~1660.5MHz (F0+51.08 MHz~F0+85.08 MHz)	40 dBc min at 1200~1220 MHz (F0+23.55~F0+43.55 MHz)
	50 dBc min at 1660.5~2100 MHz (F0+85.08 MHz~F0+524.58 MHz)	50 dBc min at 1220~2100 MHz (F0+43.55~F0+923.55 MHz)
In/Out Impedance	50 Ω	50 Ω
Group Delay Variation (F0±9.0 MHz) Absolute delay in BW	40 nsec max 150 nsec max	40 nsec max 150 nsec max
Input Power handling	30 dBm	30 dBm
Operating Temp	-40~+85°C	-40~+85°C
Storage Temp	-55~+100°C	-55~+100°C
PCB Dielectric Constant	FR4	
PCB thickness	1.0mm	
PCB finish	Au	

This product is RoHS compliant.

The component survives assembly done with lead based reflow soldering with two reflow cycles without performance change outside specification or damage

Operating without more than +/-1 dB change of pass band characteristics at the temperature extremes -40°C and +85°C.

The PCB material conforms at least IPC-4101B/129 (indicating a min. level of quality, Tg)

The PCB construction conforms at least IPC-6012B class 3 (indicating e.g. the min. Cu plating thickness of via's applied)

ANT port is DC grounded

Operating without degradation at surrounding air pressure from 170kPa to 9kPa

The DC isolation between all outputs (L1 and L5) to the ground is to be >= +/-10 Volt



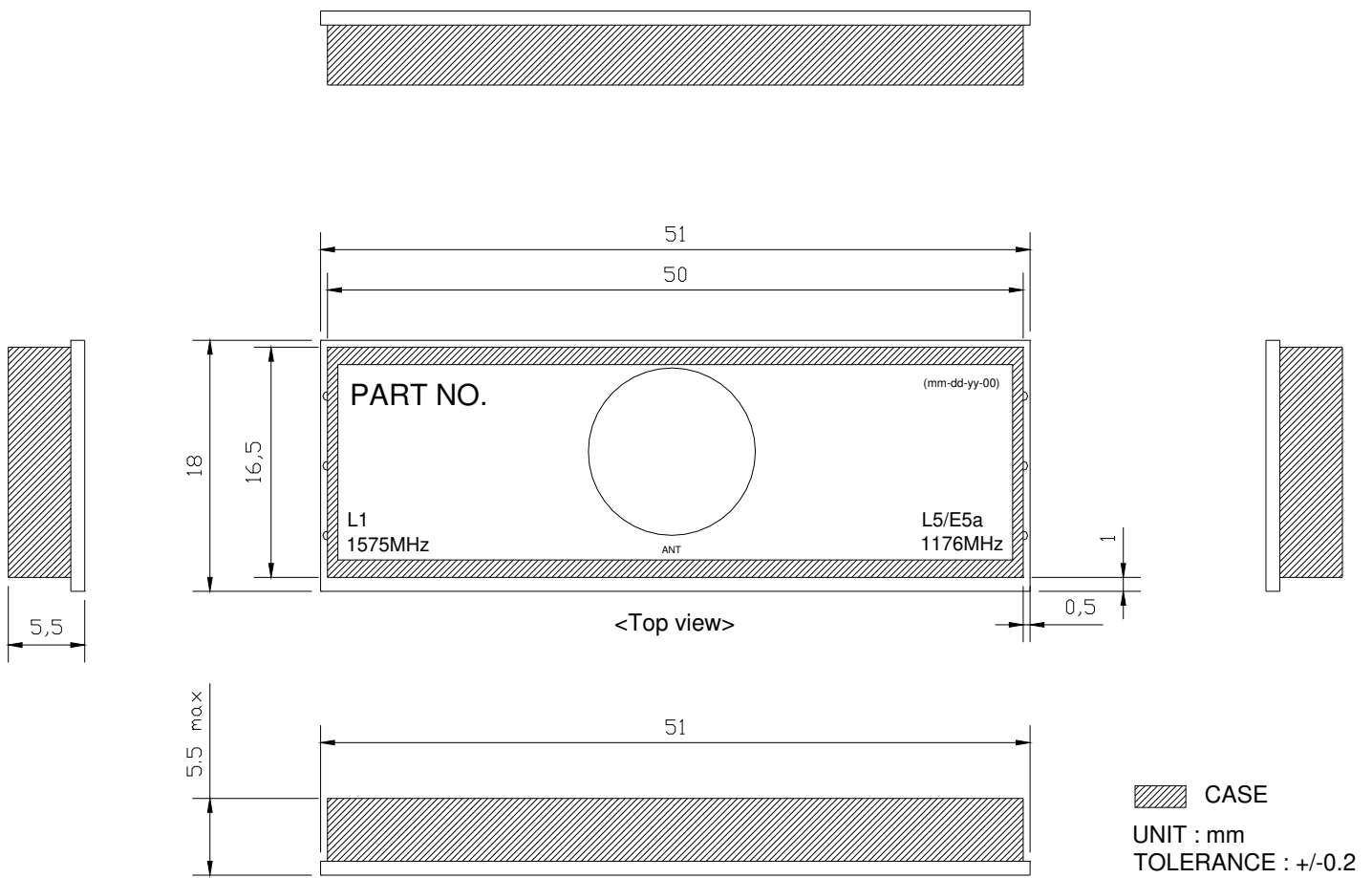
ANATECH ELECTRONICS INC
RF & Microwave Filters & Products

**1176 MHz / 1575 MHz
Ceramic Bandpass Filter**

Part Number: AM1176-1575D1150

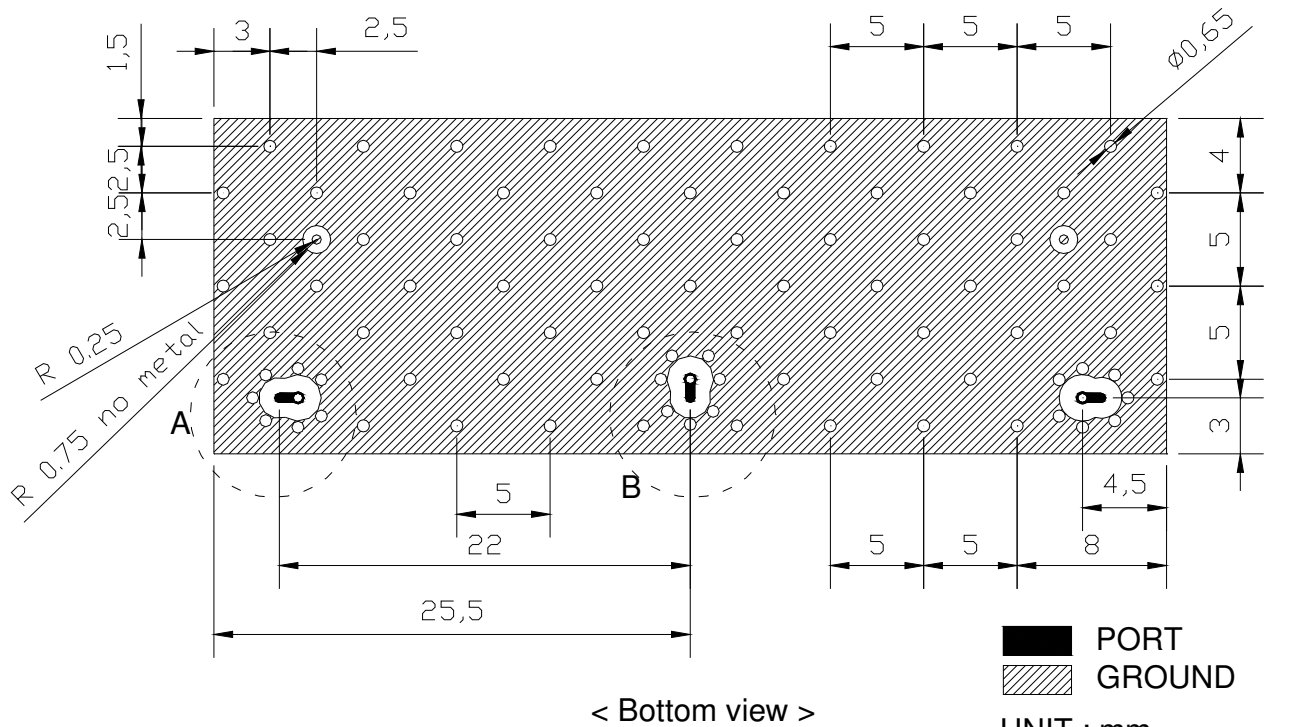


Outline Drawing:





Outline Drawing:



Tolerance on BGA positioning is 0.1 mm max
 PCB thickness tolerance is +/-1mm max
 Misalignment between solder mask and copper is 50µm max
 The max Au thickness is 100nm to reduce the risk for brittle solder bonds

UNIT : mm
 TOLERANCE : +/-0.1



Outline Drawing:

