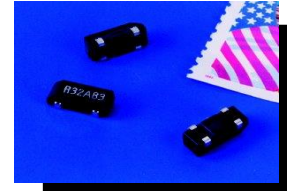
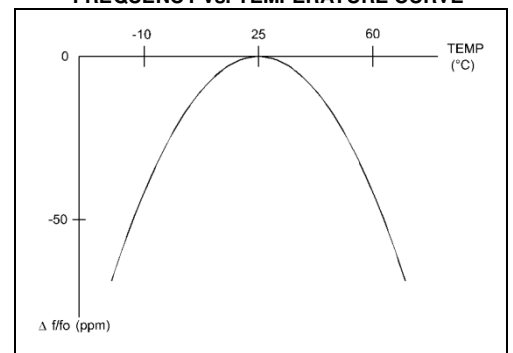


● SPECIFICATIONS

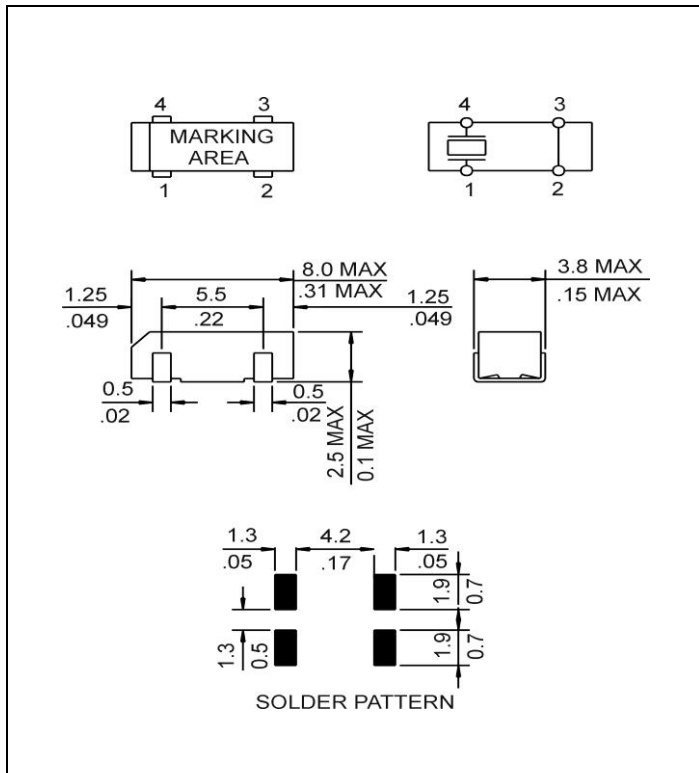
PARAMETER	VALUE
NOMINAL FREQUENCY	32.768 kHz
FREQUENCY TOLERANCE AT 25°C	±15 ppm max
TURNOVER TEMPERATURE	+25°C ±5°C
PARABOLIC CURVATURE CONSTANT	(-0.034 ±0.006) ppm/°C <sup>2</sup>
OPERATING TEMPERATURE RANGE	-40°C to +85°C
STORAGE TEMPERATURE RANGE	-55°C to +125°C
AGING	±3 ppm first year max
LOAD CAPACITANCE	6 pF
EQUIVALENT SERIES RESISTANCE	50 kΩ max
SHUNT CAPACITANCE	1.35 pF typ, 2 pF max
MOTIONAL CAPACITANCE	3 fF typ
CAPACITANCE RATIO	450 typ
DRIVE LEVEL	1 μW max
INSULATION RESISTANCE	500 MΩ min
REFLOW CONDITIONS	260°C for 10 sec max



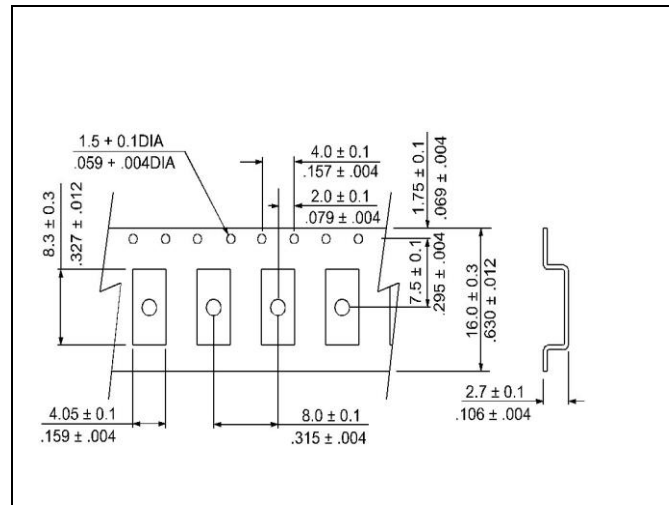
● FREQUENCY vs. TEMPERATURE CURVE



● MECHANICAL SPECIFICATION



● CARRIER TAPE DIMENSIONS



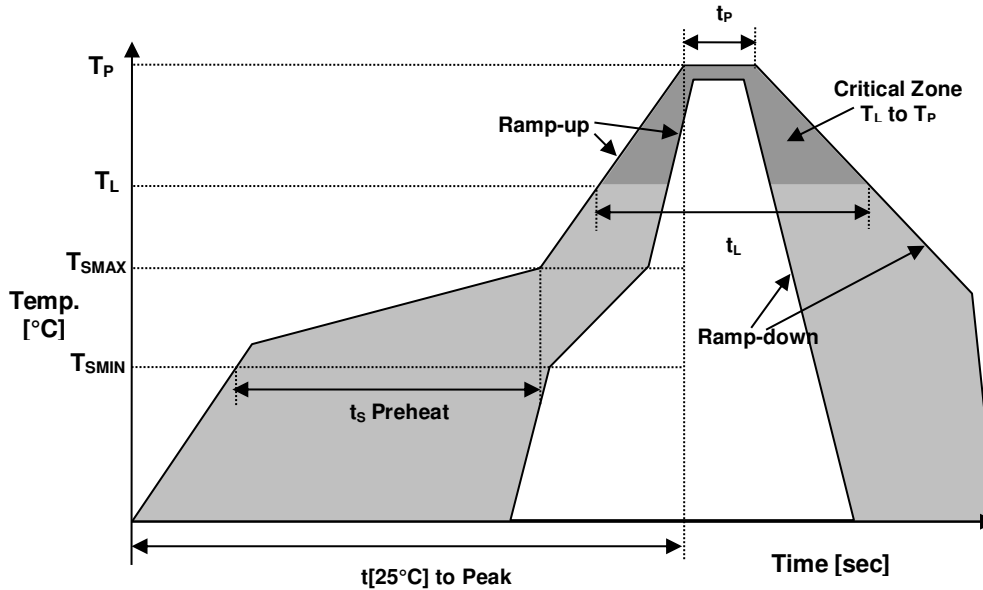
NOTE: REFER TO EIA-481 FOR DIMENSIONS

● PACKAGING

178 mm REEL DIAMETER  
 16 mm TAPE WIDTH, 8 mm PITCH  
 QUANTITY: 3000 PIECES PER REEL

IN ACCORDANCE WITH EIA-481

● REFLOW PROFILE



Reflow profile		
Temperature Min Preheat	$T_{SMIN}$	150°C
Temperature Max Preheat	$T_{SMAX}$	200°C
Time ( $T_{SMIN}$ to $T_{SMAX}$ )	$t_s$	60-180 s
Temperature	$T_L$	217°C
Peak Temperature	$T_P$	260°C
Ramp-up rate	$R_{UP}$	3°C/s max.
Ramp-down rate	$R_{DOWN}$	6°C/s max.
Time within 5°C of Peak Temperature	$t_p$	10 s
Time $t[25^\circ\text{C}]$ to Peak Temperature	$t[25^\circ\text{C}]$ to Peak	480 s
Time	$t_L$	60-150 s

● ENVIRONMENTAL

PARAMETER	VALUE
MOISTURE SENSITIVITY LEVEL	1
RoHS	Compliant
REACH SVHC	Compliant
HALOGEN-FREE	Compliant
ESD CLASSIFICATION LEVEL	N/A
TERMINATION FINISH	Sn





A RAMI TECHNOLOGY Company

MARKING

x36myR

x – Internal Production ID code
m – Month code
y – Year code

Table with 2 columns: MONTH, CODE. Rows include JANUARY (A), FEBRUARY (B), MARCH (C), APRIL (D), MAY (E), JUNE (F), JULY (G), AUGUST (H), SEPTEMBER (J), OCTOBER (K), NOVEMBER (L), DECEMBER (M).

Table with 2 columns: Year, Code. Rows include 2015 (5), 2016 (6), 2017 (7), 2018 (8), 2019 (9), 2020 (0), 2021 (1), 2022 (2), 2023 (3), 2024 (4), 2025 (5).

APPROVAL

Table with 2 columns: Field, Value. Fields: Drawn By (XLiu, December 20, 2019), Approved By (Jlvns, December 20, 2019), Revision (A, Initial Release).

Raltron Electronics / RAMI Technology USA, LLC, including its affiliates, employees, agents and other persons acting on its behalf (collectively Raltron/RAMI Tech), disclaim any and all liability for any errors or inaccuracies contained in this data sheet.

Copyright © 2016, Raltron Electronics / RAMI Technology USA, LLC. All rights reserved. No part of this document may be reproduced in any form without the prior written permission of Raltron Electronics / RAMI Technology USA, LLC.