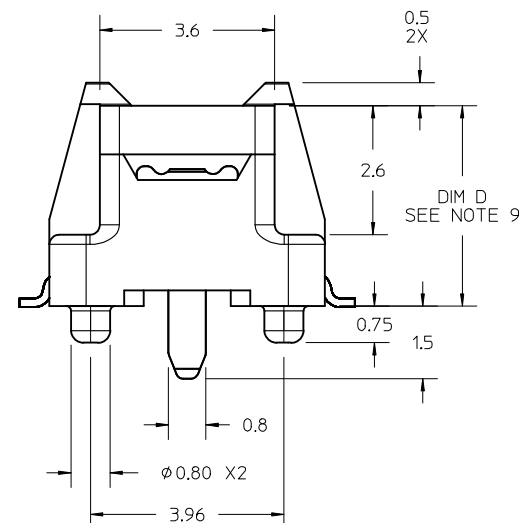
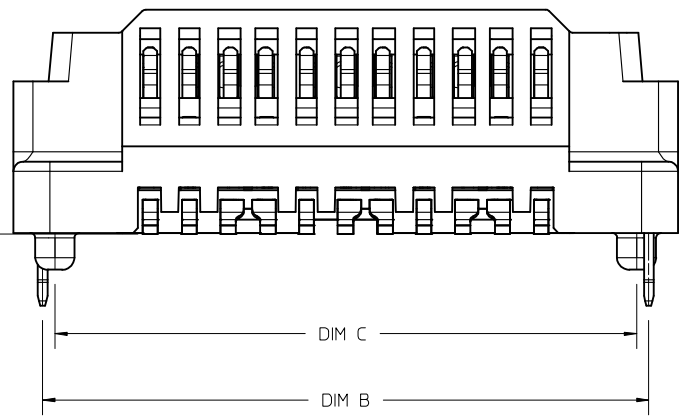
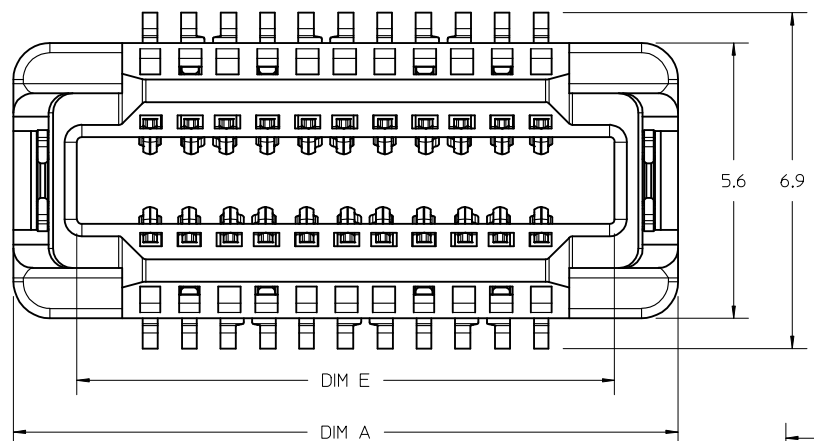


10	9	8	7	6	5	4	3	2	1
PART NUMBER	CKT SIZE	DIFF PAIRS	SPARE CKTS	DIM A	DIM B	DIM C	DIM E	DIM D	
171450-3102	22	6	2	13.6	12.40	11.90	11.0		4.10
171450-3106	60	16	8	28.8	27.60	27.10	26.2		4.10
171450-3114	82	22	10	41.6	40.40	39.90	11.0/ 26.2		4.10

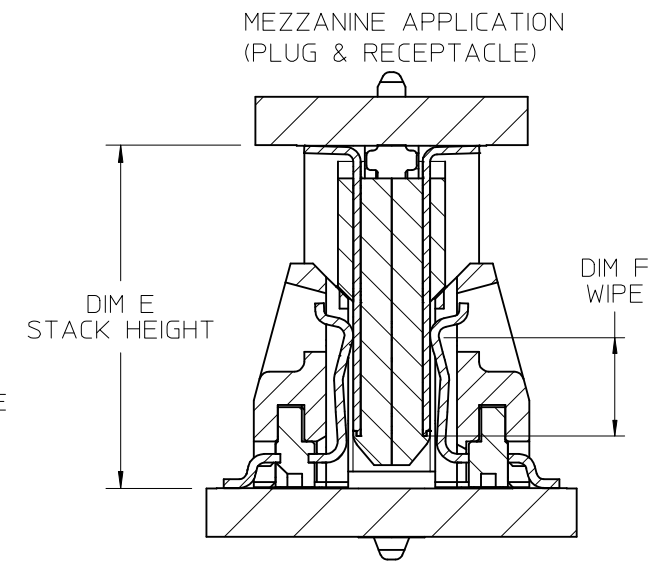
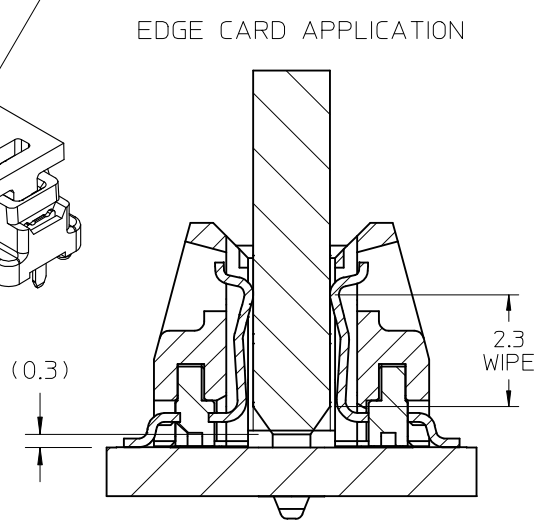
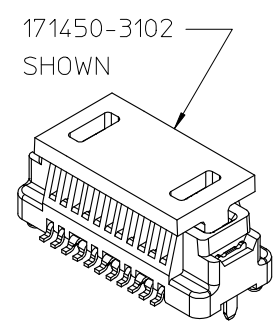
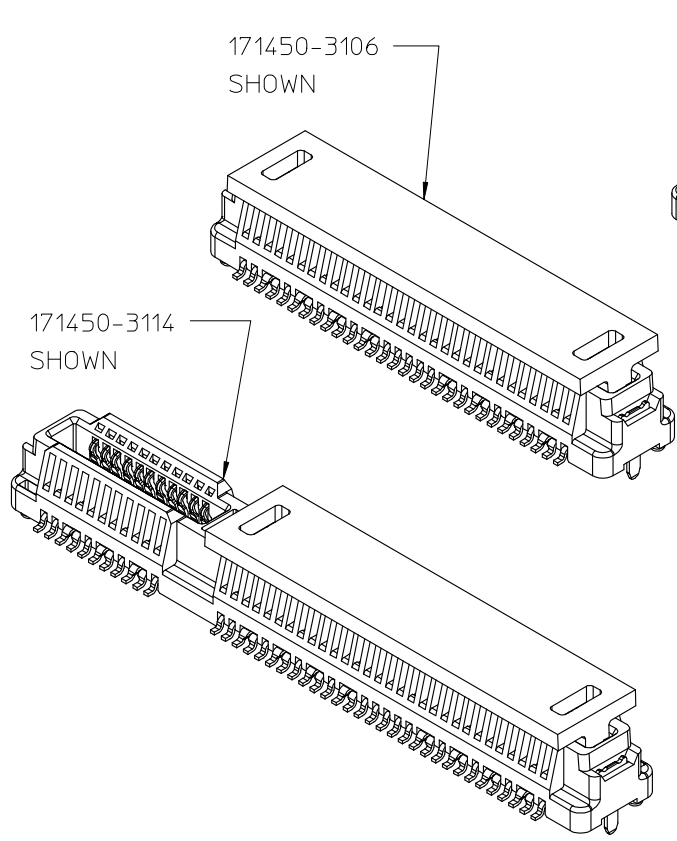


- NOTES:
1. MATERIALS: HOUSING: LCP, UL94V-0, BLACK
CONTACTS: HIGH PERFORMANCE COPPER ALLOY
 2. FINISH: 0.76 μ m MIN SELECT GOLD IN CONTACT AREA,
SELECT MATTE TIN IN TAIL AREA, OVERALL NICKEL.
 3. PRODUCT SPECIFICATION: PS-171446-0001
 4. PACKAGING SPECIFICATION: PK-70873-6002
 5. MATES WITH SPEEDSTACK PLUGS: 171446 & 171810
 6. APPLICATION SPECIFICATION: AS-171450-9999
 7. COSMETIC SPECIFICATION: PS-45499-002 CLASS B
 8. PART STATUS: CONTACT MOLEX
 9. DIM D ON THIS DRAWING PLUS DIM D ON DRAWING # SD-171446-1000
EQUALS THE SYSTEM MATED STACK HEIGHT
 10. PARTS SHIPPED WITH PICK AND PLACE COVERS.

UPDATE EDGE CARD EC NO: UCP2015-5331 DRWN: JB INGHAM 2015/08/24 CHKD: DMC GOWAN 2015/08/24 APPR: DMC GOWAN 2015/09/18	QUALITY SYMBOLS $\nabla = 0$ $\nabla = 0$ $\nabla = 0$	GENERAL TOLERANCES (UNLESS SPECIFIED)		DIMENSION STYLE MM ONLY		SCALE 10:1	DESIGN UNITS METRIC	THIRD ANGLE PROJECTION																				
		<table border="1"> <thead> <tr> <th></th> <th>mm</th> <th>INCH</th> </tr> </thead> <tbody> <tr> <td>4 PLACES</td> <td>\pm---</td> <td>\pm---</td> </tr> <tr> <td>3 PLACES</td> <td>\pm---</td> <td>\pm---</td> </tr> <tr> <td>2 PLACES</td> <td>\pm0.13</td> <td>\pm---</td> </tr> <tr> <td>1 PLACE</td> <td>\pm0.25</td> <td>\pm---</td> </tr> <tr> <td>0 PLACE</td> <td>\pm---</td> <td>\pm---</td> </tr> </tbody> </table>			mm	INCH	4 PLACES	\pm ---	\pm ---	3 PLACES	\pm ---	\pm ---	2 PLACES	\pm 0.13	\pm ---	1 PLACE	\pm 0.25	\pm ---	0 PLACE	\pm ---	\pm ---	DRAWN BY JB INGHAM		DATE 2014/11/11	TITLE SPEEDSTACK RECEPTACLE ASSEMBLY SALES DRAWING			
			mm	INCH																								
		4 PLACES	\pm ---	\pm ---																								
3 PLACES	\pm ---	\pm ---																										
2 PLACES	\pm 0.13	\pm ---																										
1 PLACE	\pm 0.25	\pm ---																										
0 PLACE	\pm ---	\pm ---																										
ANGULAR $\pm 1/2^\circ$ DRAFT WHERE APPLICABLE MUST REMAIN WITHIN DIMENSIONS		CHECKED BY DMC GOWAN		DATE 2014/11/11																								
		APPROVED BY DMC GOWAN		DATE 2015/01/26																								
		MATERIAL NO.		SEE CHART		DOCUMENT NO. SD-171450-3000		SHEET NO. 1 OF 8																				

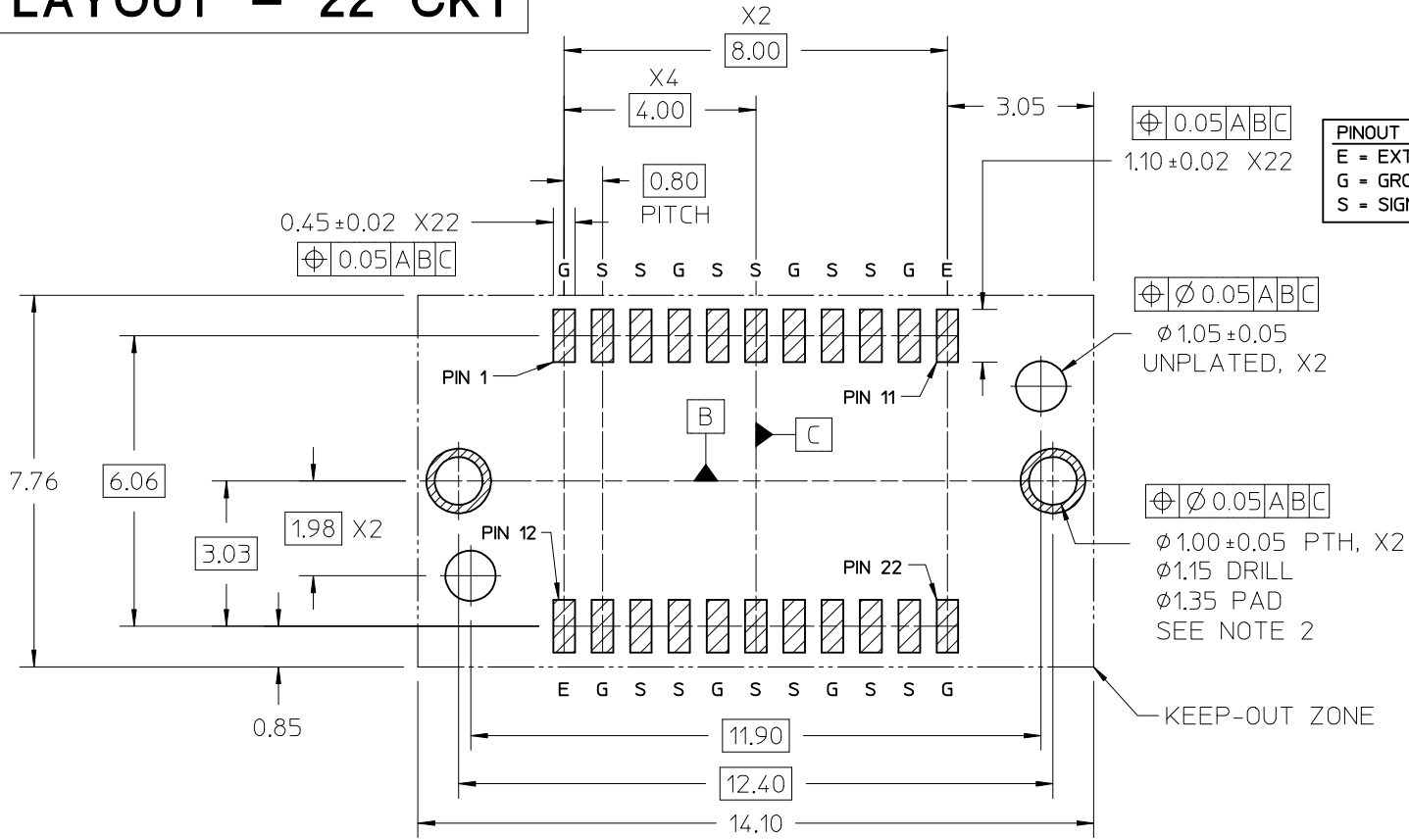
MEZZANINE (PLUG & RECEPTACLE) STACKING CHART

RECEPTACLE OPTIONS	CIRCUITS	MOLEX P/N	HEIGHT	PLUG OPTIONS (1mm WIPE)				PLUG OPTIONS (2mm WIPE)				
				HEIGHT	1mm	2mm	3mm	4mm	1mm	2mm	3mm	4mm
				22 CKT	171446-1101	171446-1102	171446-1103	171446-1104	171446-1105	171446-1106	171446-1107	171446-1108
				60 CKT	171446-1109	171446-1110	171446-1111	171446-1112	171446-1113	171446-1114	171446-1115	171446-1116
22 CKT	171450-3102	4mm	5/1	6/1	7/1	8/1	5/2	6/2	7/2	8/2		
60 CKT	171450-3106											
82 CKT	171450-3114											
				STACK HEIGHT (DIM E)/WIPE (DIM F)								



SEE SHEET 1 EC NO: UCP2015-5331 DRWN: JBINGHAM 2015/08/24 CHKD: DMCGOWAN 2015/08/24 APPR: DMCGOWAN 2015/09/18	QUALITY SYMBOLS ▽/0 ▽/0 ▽/0	GENERAL TOLERANCES (UNLESS SPECIFIED) <table border="1"> <thead> <tr> <th></th> <th>mm</th> <th>INCH</th> </tr> </thead> <tbody> <tr> <td>4 PLACES</td> <td>±---</td> <td>±---</td> </tr> <tr> <td>3 PLACES</td> <td>±---</td> <td>±---</td> </tr> <tr> <td>2 PLACES</td> <td>±0.13</td> <td>±---</td> </tr> <tr> <td>1 PLACE</td> <td>±0.25</td> <td>±---</td> </tr> <tr> <td>0 PLACE</td> <td>±---</td> <td>±---</td> </tr> </tbody> </table>		mm	INCH	4 PLACES	±---	±---	3 PLACES	±---	±---	2 PLACES	±0.13	±---	1 PLACE	±0.25	±---	0 PLACE	±---	±---	DIMENSION STYLE MM ONLY	SCALE 10:1	DESIGN UNITS METRIC	THIRD ANGLE PROJECTION
		mm	INCH																					
	4 PLACES	±---	±---																					
	3 PLACES	±---	±---																					
2 PLACES	±0.13	±---																						
1 PLACE	±0.25	±---																						
0 PLACE	±---	±---																						
DRAWN BY JBINGHAM	DATE 2014/11/11	TITLE SPEEDSTACK RECEPTACLE ASSEMBLY SALES DRAWING																						
CHECKED BY DMCGOWAN	DATE 2014/11/11	molex																						
APPROVED BY DMCGOWAN	DATE 2015/01/26	MATERIAL NO. SEE CHART	DOCUMENT NO. SD-171450-3000	SHEET NO. 2 OF 8	THIS DRAWING CONTAINS INFORMATION THAT IS PROPRIETARY TO MOLEX INCORPORATED AND SHOULD NOT BE USED WITHOUT WRITTEN PERMISSION																			

PCB LAYOUT - 22 CKT



PCB LAYOUT (COMPONENT SIDE)

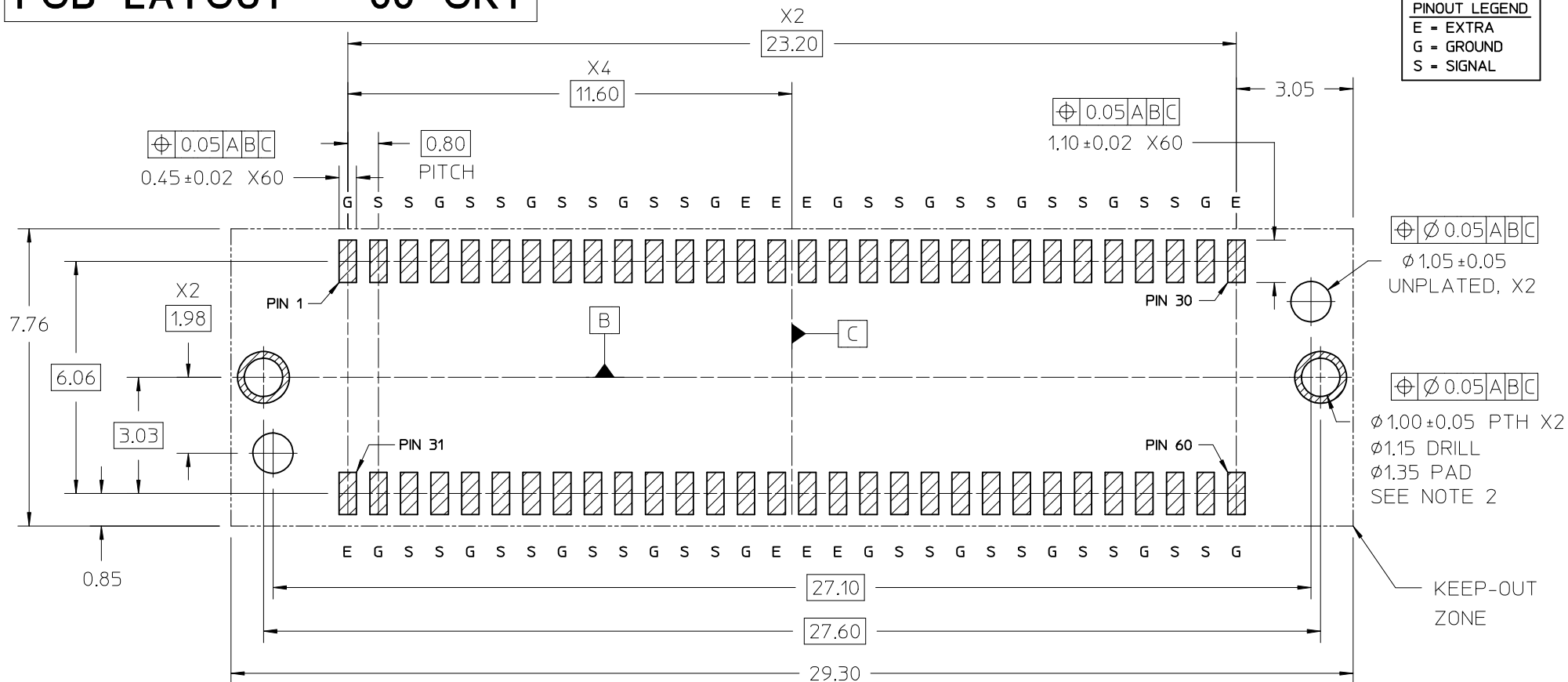
SOLDER PASTE THICKNESS: 0.15 MIN
 DATUM **A** IS THE BOTTOM SURFACE OF THE PCB

NOTES:

- PIN NUMBERING IS FOR REFERENCE ONLY. OTHER PIN NUMBERS WILL NOT AFFECT THE OPERATION OF THE CONNECTOR.
- RETENTION NAIL MUST BE SOLDERED ONTO THE PCB FOR PROPER CONNECTOR FUNCTION.

SEE SHEET 1 EC NO: UCP2015-5331 DRAWN: JBINGHAM 2015/08/24 CHKD: DMCGOWAN 2015/08/24 APPR: DMCGOWAN 2015/09/18	DESCRIPTION REV	QUALITY SYMBOLS	GENERAL TOLERANCES (UNLESS SPECIFIED)	DIMENSION STYLE	SCALE	DESIGN UNITS	THIRD ANGLE PROJECTION		
		$\nabla Z=0$ $\nabla Z=0$ $\nabla Z=0$	mm INCH 4 PLACES ± --- ± --- 3 PLACES ± --- ± --- 2 PLACES ± 0.13 ± --- 1 PLACE ± 0.25 ± --- 0 PLACE ± --- ± ---	MM ONLY	10:1	METRIC	DRAWN BY: JBINGHAM 2014/11/11 CHECKED BY: DMCGOWAN 2014/11/11 APPROVED BY: DMCGOWAN 2015/01/26	TITLE	SPEEDSTACK RECEPTACLE ASSEMBLY SALES DRAWING
		ANGULAR ± 1/2° DRAFT WHERE APPLICABLE MUST REMAIN WITHIN DIMENSIONS	MATERIAL NO. SEE CHART	DOCUMENT NO. SD-171450-3000	SHEET NO. 3 OF 8				
		THIS DRAWING CONTAINS INFORMATION THAT IS PROPRIETARY TO MOLEX INCORPORATED AND SHOULD NOT BE USED WITHOUT WRITTEN PERMISSION							

PCB LAYOUT - 60 CKT



PINOUT LEGEND	
E	= EXTRA
G	= GROUND
S	= SIGNAL

PCB LAYOUT (COMPONENT SIDE)

SOLDER PASTE THICKNESS: 0.15 MIN
 DATUM [A] IS THE BOTTOM SURFACE OF THE PCB

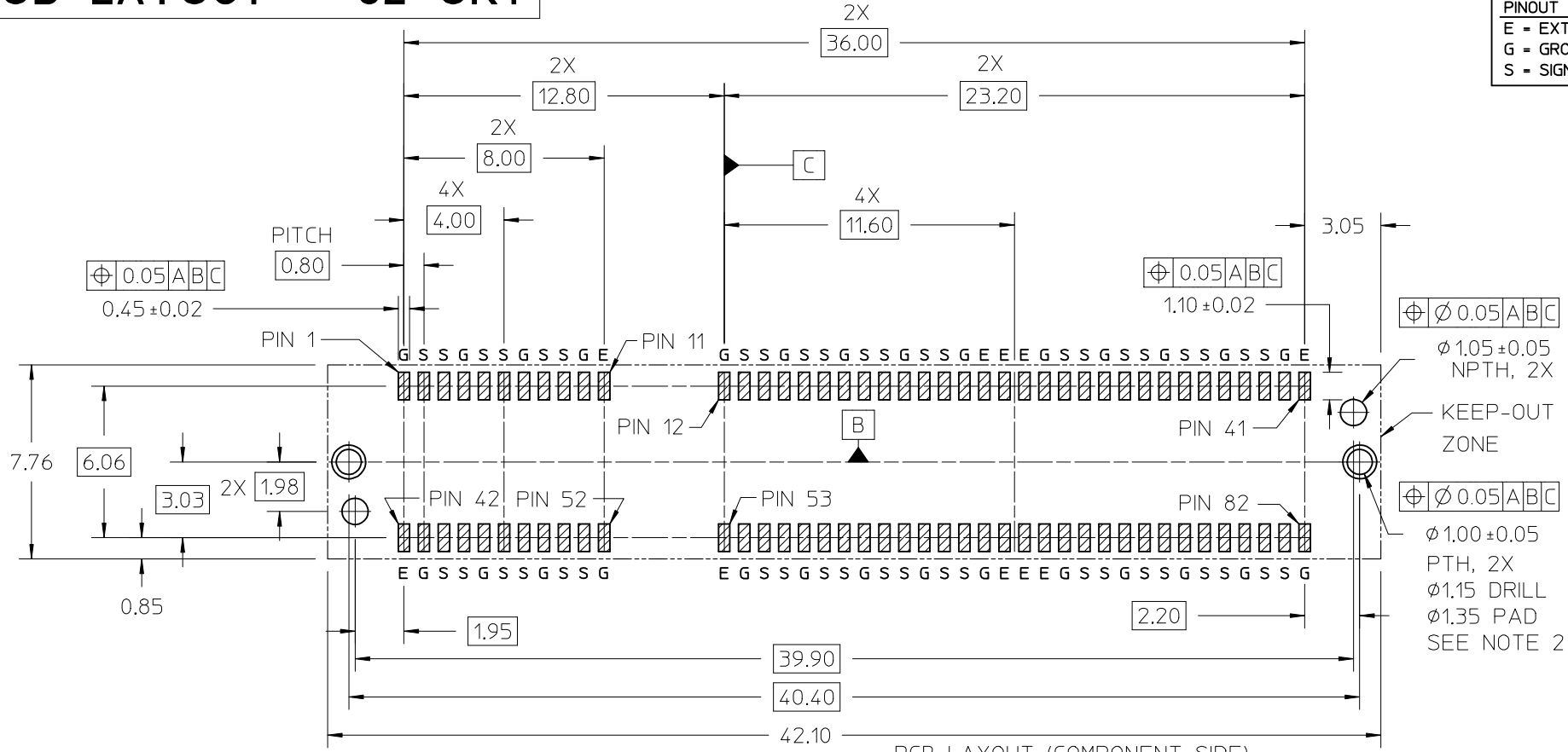
NOTES:

- PIN NUMBERING IS FOR REFERENCE ONLY. OTHER PIN NUMBERS WILL NOT AFFECT THE OPERATION OF THE CONNECTOR.
- RETENTION NAIL MUST BE SOLDERED ONTO THE PCB FOR PROPER CONNECTOR FUNCTION.

SEE SHEET 1 EC NO: UCP2015-5331 DRAWN: JBINGHAM 2015/08/24 CHKD: DMCGOWAN 2015/08/24 APPR: DMCGOWAN 2015/09/18	QUALITY SYMBOLS	GENERAL TOLERANCES (UNLESS SPECIFIED)	DIMENSION STYLE MM ONLY		SCALE 10:1	DESIGN UNITS METRIC	THIRD ANGLE PROJECTION
	▽=0	mm INCH	DRAWN BY JBINGHAM	DATE 2014/11/11	TITLE SPEEDSTACK RECEPTACLE ASSEMBLY SALES DRAWING molex DOCUMENT NO. SD-171450-3000 SHEET NO. 4 OF 8		
	▽=0	4 PLACES ± --- ± ---	CHECKED BY DMCGOWAN	DATE 2014/11/11			
	▽=0	3 PLACES ± --- ± ---	APPROVED BY DMCGOWAN	DATE 2015/01/26			
▽=0	2 PLACES ± 0.13 ± ---	MATERIAL NO.	SEE CHART				
		1 PLACE ± 0.25 ± ---	DRAFT WHERE APPLICABLE MUST REMAIN WITHIN DIMENSIONS		THIS DRAWING CONTAINS INFORMATION THAT IS PROPRIETARY TO MOLEX INCORPORATED AND SHOULD NOT BE USED WITHOUT WRITTEN PERMISSION		
		0 PLACE ± --- ± ---					

PCB LAYOUT - 82 CKT

PINOUT LEGEND	
E	- EXTRA
G	- GROUND
S	- SIGNAL



PCB LAYOUT (COMPONENT SIDE)
 SOLDER PASTE THICKNESS: 0.15 MIN
 DATUM [A] IS THE BOTTOM SURFACE OF THE PCB

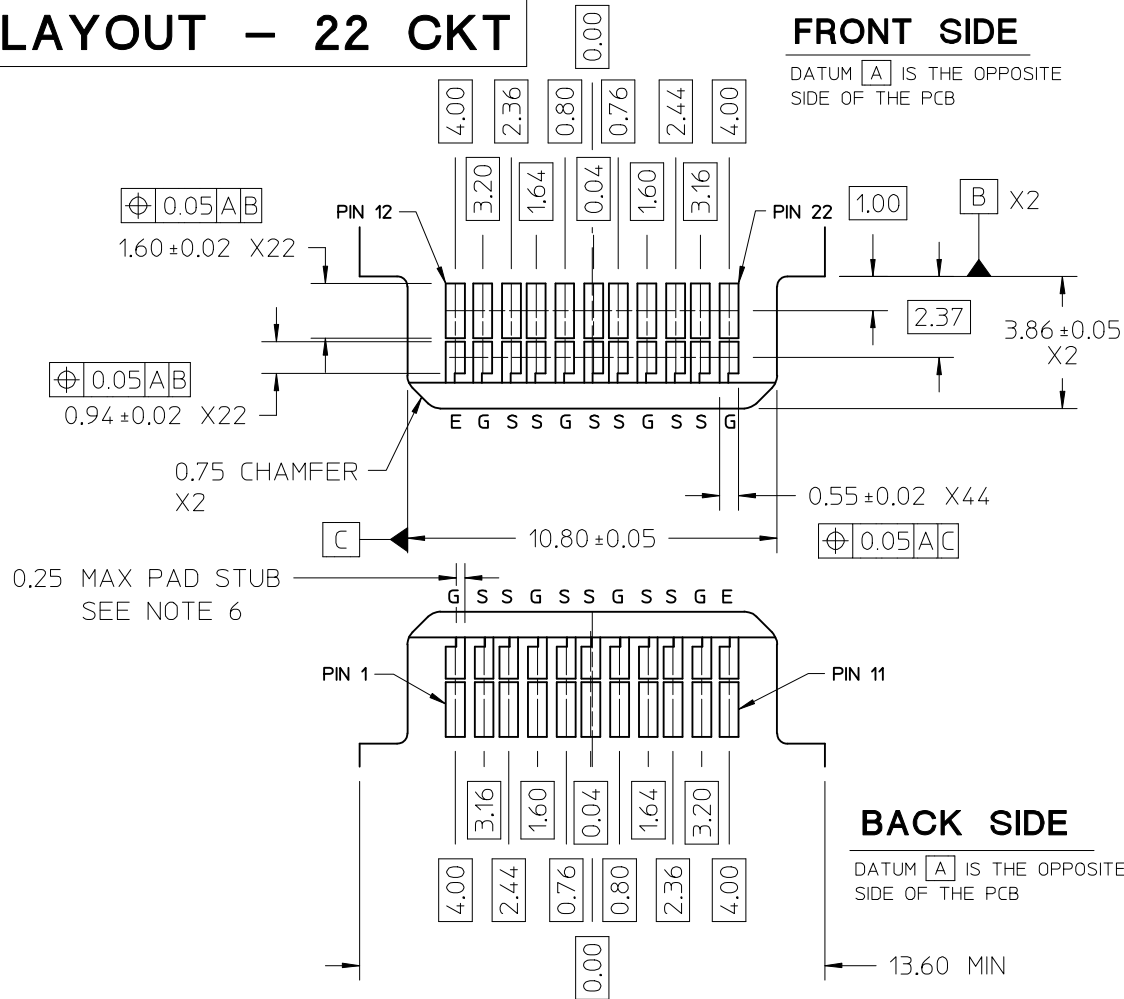
- NOTES:
- PIN NUMBERING IS FOR REFERENCE ONLY. OTHER PIN NUMBERS WILL NOT AFFECT THE OPERATION OF THE CONNECTOR.
 - RETENTION NAIL MUST BE SOLDERED ONTO THE PCB FOR PROPER CONNECTOR FUNCTION.

SEE SHEET 1 EC NO: UCP2015-5331 DRAWN: JBINGHAM 2015/08/24 CHKD: DMCGOWAN 2015/08/24 APPR: DMCGOWAN 2015/09/18 REV: C	QUALITY SYMBOLS	GENERAL TOLERANCES (UNLESS SPECIFIED)		DIMENSION STYLE MM ONLY		SCALE 6:1	DESIGN UNITS METRIC	THIRD ANGLE PROJECTION	
	$\nabla F=0$	mm	INCH	DRAWN BY JBINGHAM	DATE 2014/11/11	TITLE SPEEDSTACK RECEPTACLE ASSEMBLY SALES DRAWING			
	$\nabla E=0$	4 PLACES ±---	±---	CHECKED BY DMCGOWAN	DATE 2014/11/11	molex DOCUMENT NO. SD-171450-3000 SHEET NO. 5 OF 8			
	$\nabla F=0$	3 PLACES ±0.13	±---	APPROVED BY DMCGOWAN	DATE 2015/01/26				
	$\nabla E=0$	2 PLACES ±0.25	±---	MATERIAL NO.					
		1 PLACE ±---	±---	DRAFT WHERE APPLICABLE ANGULAR ±1/2° MUST REMAIN WITHIN DIMENSIONS		SEE CHART		THIS DRAWING CONTAINS INFORMATION THAT IS PROPRIETARY TO MOLEX INCORPORATED AND SHOULD NOT BE USED WITHOUT WRITTEN PERMISSION	

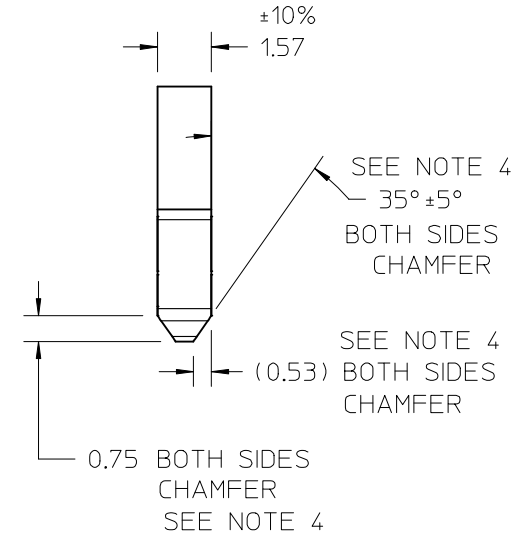
EDGECARD LAYOUT - 22 CKT

FRONT SIDE

DATUM **A** IS THE OPPOSITE SIDE OF THE PCB

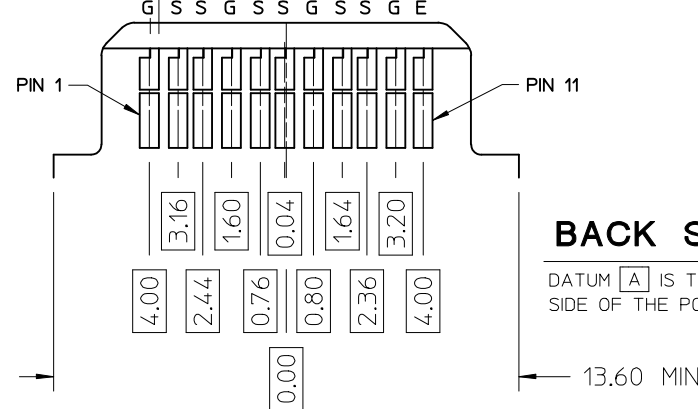


OVER CONTACT PADS



BACK SIDE

DATUM **A** IS THE OPPOSITE SIDE OF THE PCB



PINOUT LEGEND

- E = EXTRA
- G = GROUND
- S = SIGNAL

- NOTES:
- PIN NUMBERING IS FOR REFERENCE ONLY. OTHER PIN NUMBERS WILL NOT AFFECT THE OPERATION OF THE CONNECTOR.
 - EDGE CARD SHOULDERS STOP ON RECEPTACLE SHOULDERS. EDGE CARD BOTTOM DOES NOT CONTACT RECEPTACLE PCB.
 - PAD SET BACK FROM CHAMFER ENOUGH TO ACCOMMODATE LARGEST CHAMFER WITHOUT DAMAGE TO PAD EDGE.
 - CHAMFER DEPTH SHOULD BE AS LARGE AS PRACTICAL TO ENSURE CORRECT MATING TO THE RECEPTACLE.
 - ALL CHAMFERED EDGES SHOULD BE ROUNDED WHERE POSSIBLE.
 - INTERNAL PLATING BRIDGES ARE PREFERRED TO ELIMINATE PAD STUB.

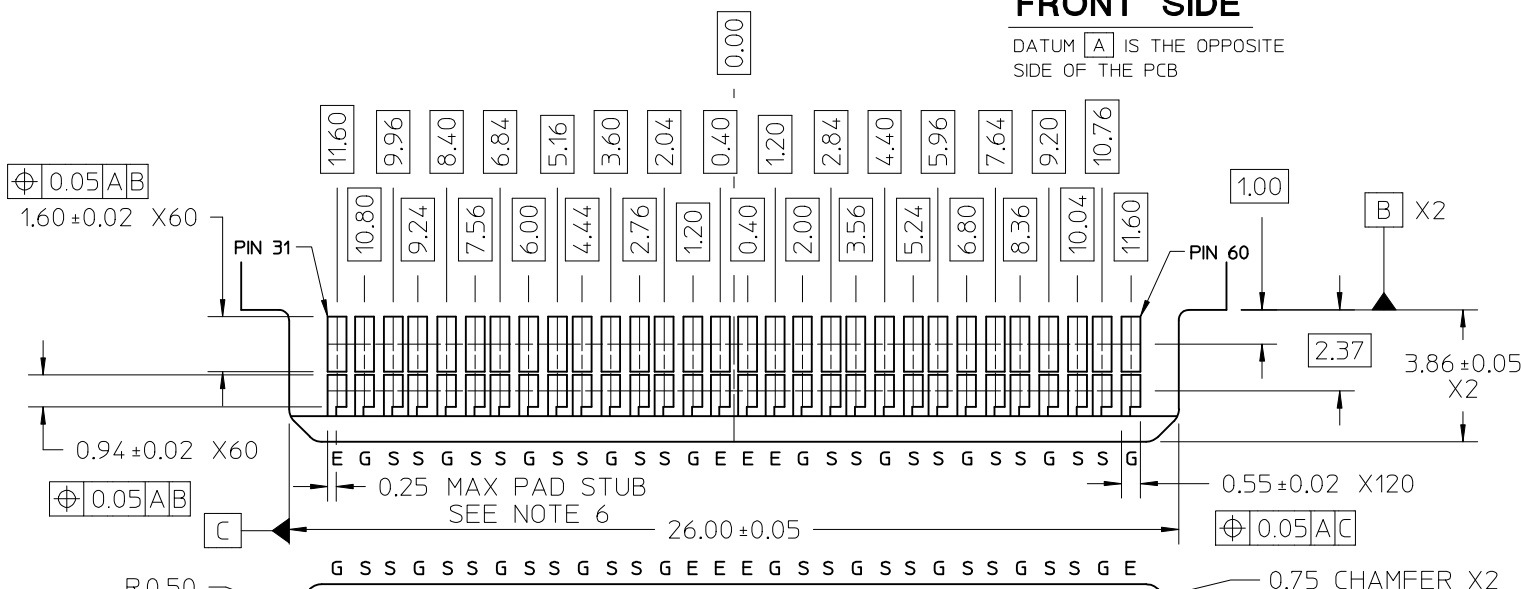
SEE SHEET 1 EC NO: UCP2015-5331 DRAWN: JBINGHAM 2015/08/24 CHKD: DMCGOWAN 2015/08/24 APPR: DMCGOWAN 2015/09/18	QUALITY SYMBOLS ▽=0 ▽=0 ▽=0	GENERAL TOLERANCES (UNLESS SPECIFIED)		DIMENSION STYLE		SCALE	DESIGN UNITS	THIRD ANGLE PROJECTION			
				MM ONLY		7:1	METRIC				
				mm	INCH	DRAWN BY	DATE	TITLE			
				4 PLACES ± --- ± ---	3 PLACES ± --- ± ---	2 PLACES ± 0.13 ± ---	1 PLACE ± 0.25 ± ---	0 PLACE ± --- ± ---	DRAWN BY		DATE
		ANGULAR ± 1/2°		MATERIAL NO.		DOCUMENT NO.		SHEET NO.			
		DRAFT WHERE APPLICABLE MUST REMAIN WITHIN DIMENSIONS		SEE CHART		SD-171450-3000		6 OF 8			
				SIZE B		THIS DRAWING CONTAINS INFORMATION THAT IS PROPRIETARY TO MOLEX INCORPORATED AND SHOULD NOT BE USED WITHOUT WRITTEN PERMISSION					

EDGE CARD LAYOUT - 60 CKT

PINOUT LEGEND	
E	= EXTRA
G	= GROUND
S	= SIGNAL

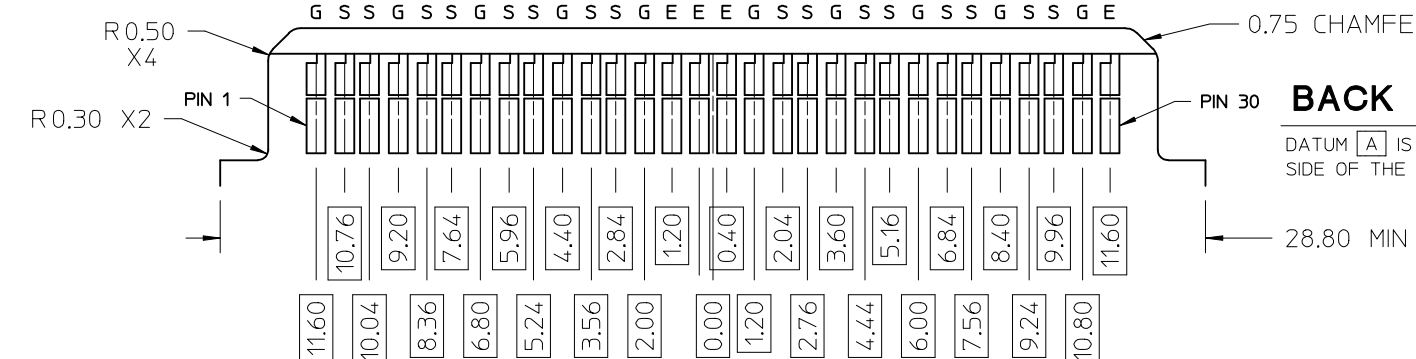
FRONT SIDE

DATUM [A] IS THE OPPOSITE SIDE OF THE PCB



BACK SIDE

DATUM [A] IS THE OPPOSITE SIDE OF THE PCB



NOTES:

- PIN NUMBERING IS FOR REFERENCE ONLY. OTHER PIN NUMBERS WILL NOT AFFECT THE OPERATION OF THE CONNECTOR.
- EDGE CARD SHOULDERS STOP ON RECEPTACLE SHOULDERS. EDGE CARD BOTTOM DOES NOT CONTACT RECEPTACLE PCB.
- PAD SET BACK FROM CHAMFER ENOUGH TO ACCOMMODATE LARGEST CHAMFER WITHOUT DAMAGE TO PAD EDGE.
- CHAMFER DEPTH SHOULD BE AS LARGE AS PRACTICAL TO ENSURE CORRECT MATING TO THE RECEPTACLE.
- ALL CHAMFERED EDGES SHOULD BE ROUNDED WHERE POSSIBLE.
- INTERNAL PLATING BRIDGES ARE PREFERRED TO ELIMINATE PAD STUB.

SEE SHEET 1
EC NO: UCP2015-5331
DRWN: JBINGHAM 2015/08/24
CHKD: DMCGOWAN 2015/08/24
APPR: DMCGOWAN 2015/09/18

QUALITY SYMBOLS
▽ F/0
▽ F/0
▽ F/0

GENERAL TOLERANCES (UNLESS SPECIFIED)		
	mm	INCH
4 PLACES	± ---	± ---
3 PLACES	± ---	± ---
2 PLACES	± 0.13	± ---
1 PLACE	± 0.25	± ---
0 PLACE	± ---	± ---
ANGULAR ± 1/2°		
DRAFT WHERE APPLICABLE MUST REMAIN WITHIN DIMENSIONS		

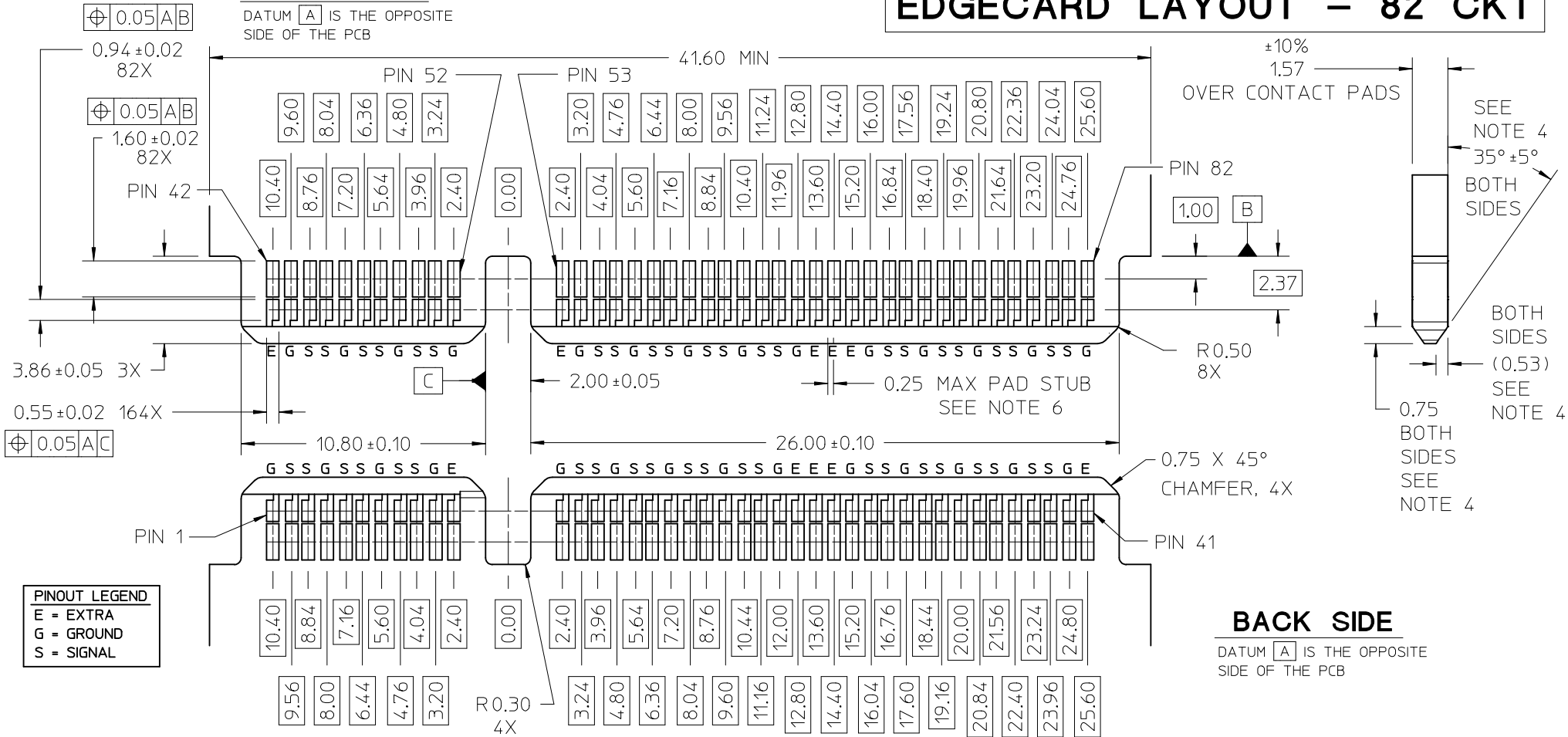
DIMENSION STYLE	
MM ONLY	
DRAWN BY	DATE
JBINGHAM	2014/11/11
CHECKED BY	DATE
DMCGOWAN	2014/11/11
APPROVED BY	DATE
DMCGOWAN	2015/01/26
MATERIAL NO.	SEE CHART
SIZE	B

SCALE	7:1	DESIGN UNITS	METRIC	THIRD ANGLE PROJECTION
TITLE				
SPEEDSTACK RECEPTACLE ASSEMBLY SALES DRAWING				
molex				
DOCUMENT NO.				SHEET NO.
SD-171450-3000				7 OF 8
THIS DRAWING CONTAINS INFORMATION THAT IS PROPRIETARY TO MOLEX INCORPORATED AND SHOULD NOT BE USED WITHOUT WRITTEN PERMISSION				

EDGECARD LAYOUT – 82 CKT

FRONT SIDE

DATUM **A** IS THE OPPOSITE SIDE OF THE PCB



PINOUT LEGEND	
E	= EXTRA
G	= GROUND
S	= SIGNAL

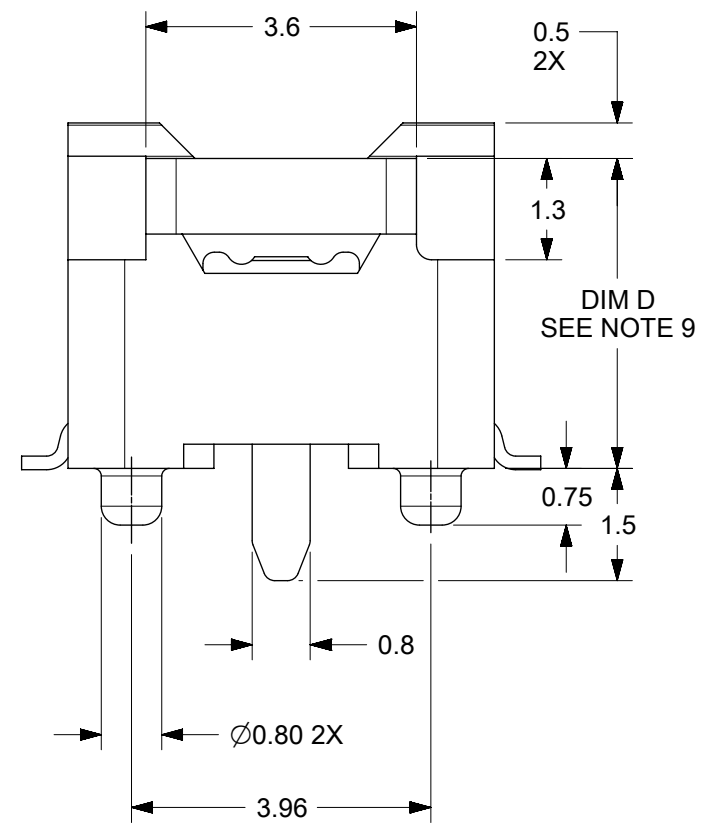
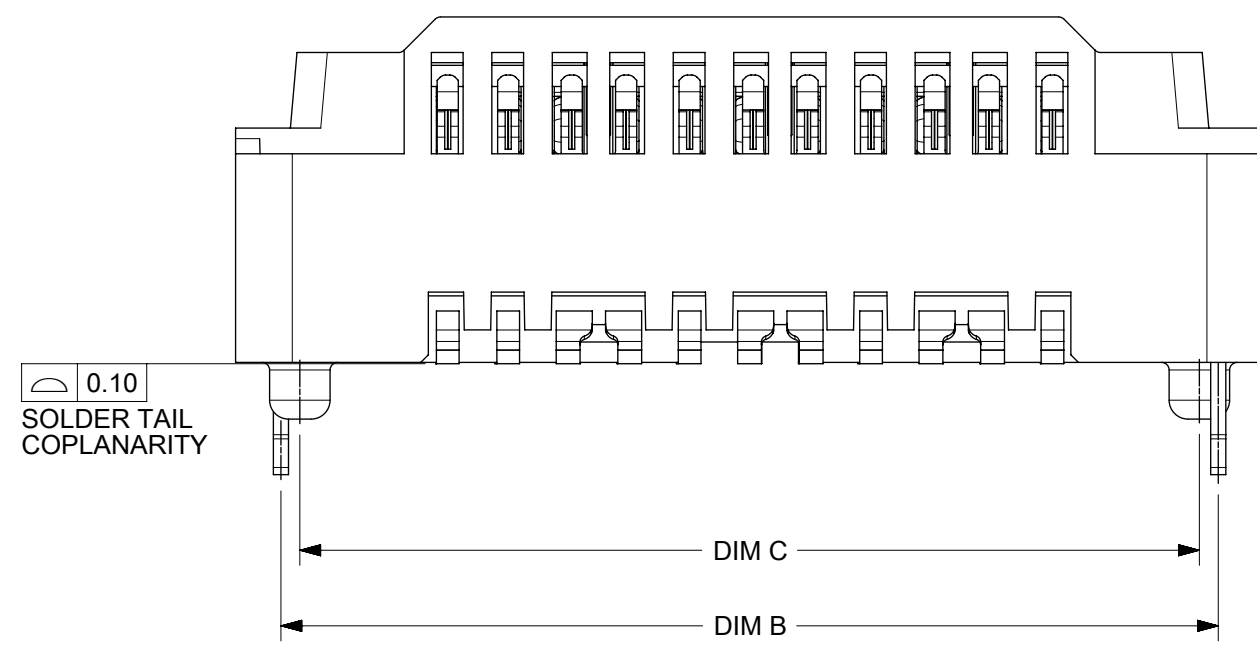
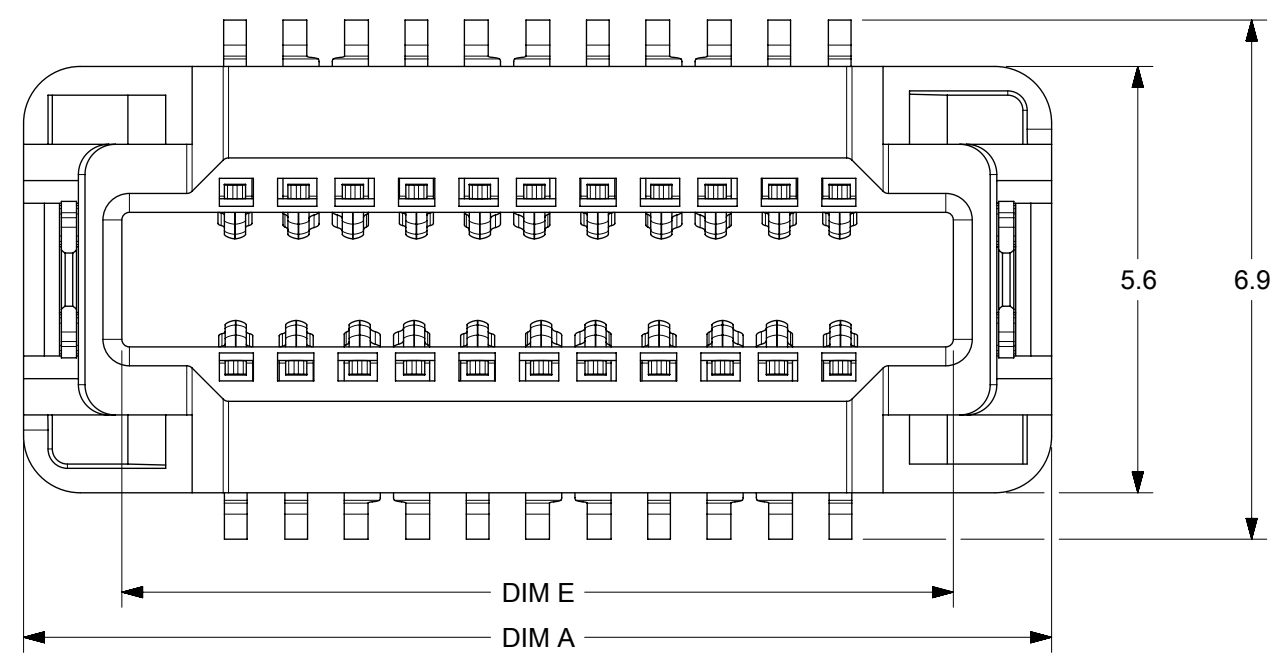
BACK SIDE

DATUM **A** IS THE OPPOSITE SIDE OF THE PCB

- NOTES:
- PIN NUMBERING IS FOR REFERENCE ONLY. OTHER PIN NUMBERS WILL NOT AFFECT THE OPERATION OF THE CONNECTOR.
 - EDGE CARD SHOULDERS STOP ON RECEPTACLE SHOULDERS. EDGE CARD BOTTOM DOES NOT CONTACT RECEPTACLE PCB.
 - PAD SET BACK FROM CHAMFER ENOUGH TO ACCOMMODATE LARGEST CHAMFER WITHOUT DAMAGE TO PAD EDGE.
 - CHAMFER DEPTH SHOULD BE AS LARGE AS PRACTICAL TO ENSURE CORRECT MATING TO THE RECEPTACLE.
 - ALL CHAMFERED EDGES SHOULD BE ROUNDED WHERE POSSIBLE.
 - INTERNAL PLATING BRIDGES ARE PREFERRED TO ELIMINATE PAD STUB.

SEE SHEET 1 EC NO: UCP2015-5331 DRAWN: JB INGHAM 2015/08/24 CHKD: DMC GOWAN 2015/08/24 APPR: DMC GOWAN 2015/09/18	QUALITY SYMBOLS	GENERAL TOLERANCES (UNLESS SPECIFIED)	DIMENSION STYLE	SCALE	DESIGN UNITS	THIRD ANGLE PROJECTION
	$\nabla = 0$ $\nabla = 0$ $\nabla = 0$	mm INCH 4 PLACES ± --- ± --- 3 PLACES ± --- ± --- 2 PLACES ± 0.13 ± --- 1 PLACE ± 0.25 ± --- 0 PLACE ± --- ± ---	MM ONLY	6:1	METRIC	TITLE SPEEDSTACK RECEPTACLE ASSEMBLY SALES DRAWING molex DOCUMENT NO. SD-171450-3000 SHEET NO. 8 OF 8
			DRAWN BY: JB INGHAM DATE: 2014/11/11 CHECKED BY: DMC GOWAN DATE: 2014/11/11 APPROVED BY: DMC GOWAN DATE: 2015/01/26	MATERIAL NO. SEE CHART	THIS DRAWING CONTAINS INFORMATION THAT IS PROPRIETARY TO MOLEX INCORPORATED AND SHOULD NOT BE USED WITHOUT WRITTEN PERMISSION	
			ANGULAR ± 1/2° DRAFT WHERE APPLICABLE MUST REMAIN WITHIN DIMENSIONS	SIZE B		

PART NUMBER	CKT SIZE	DIFF PAIRS	SPARE CKTS	DIM A	DIM B	DIM C	DIM E	DIM D
171450-5102	22	6	2	13.6	12.40	11.90	11.0	4.10
171450-5105	60	16	8	28.8	27.60	27.10	26.2	3.10
171450-5106								4.10
171450-5114	82	22	10	41.6	40.40	39.90	11.0/ 26.2	4.10



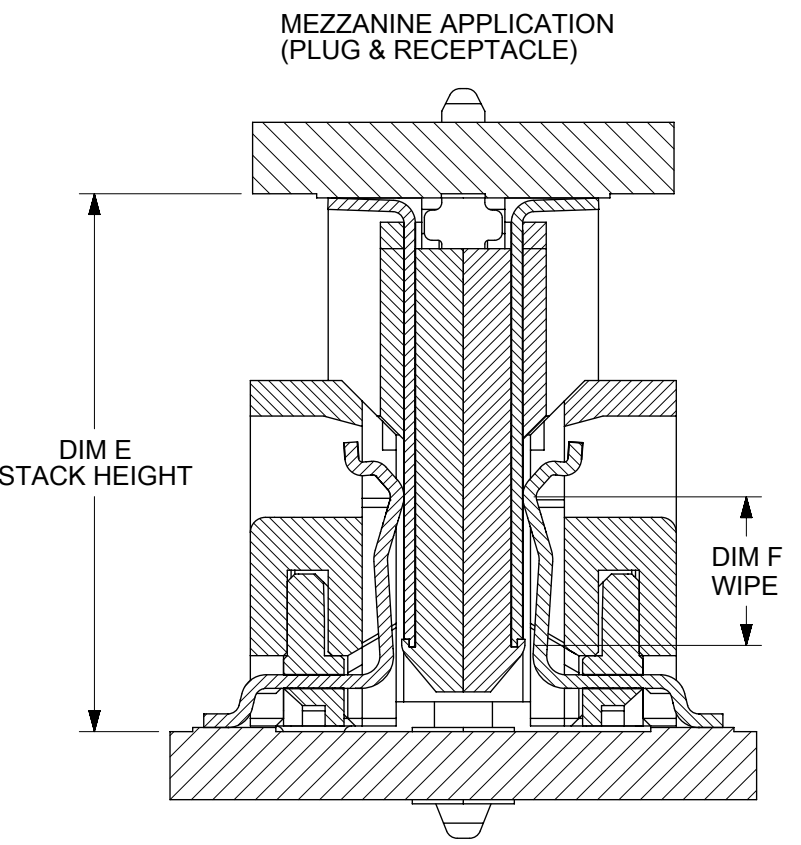
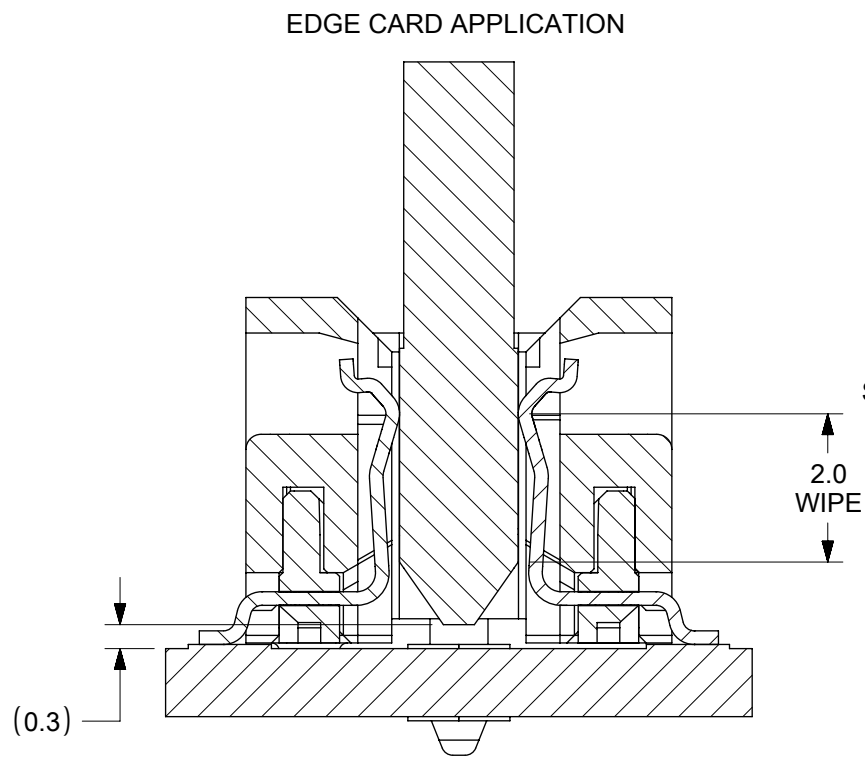
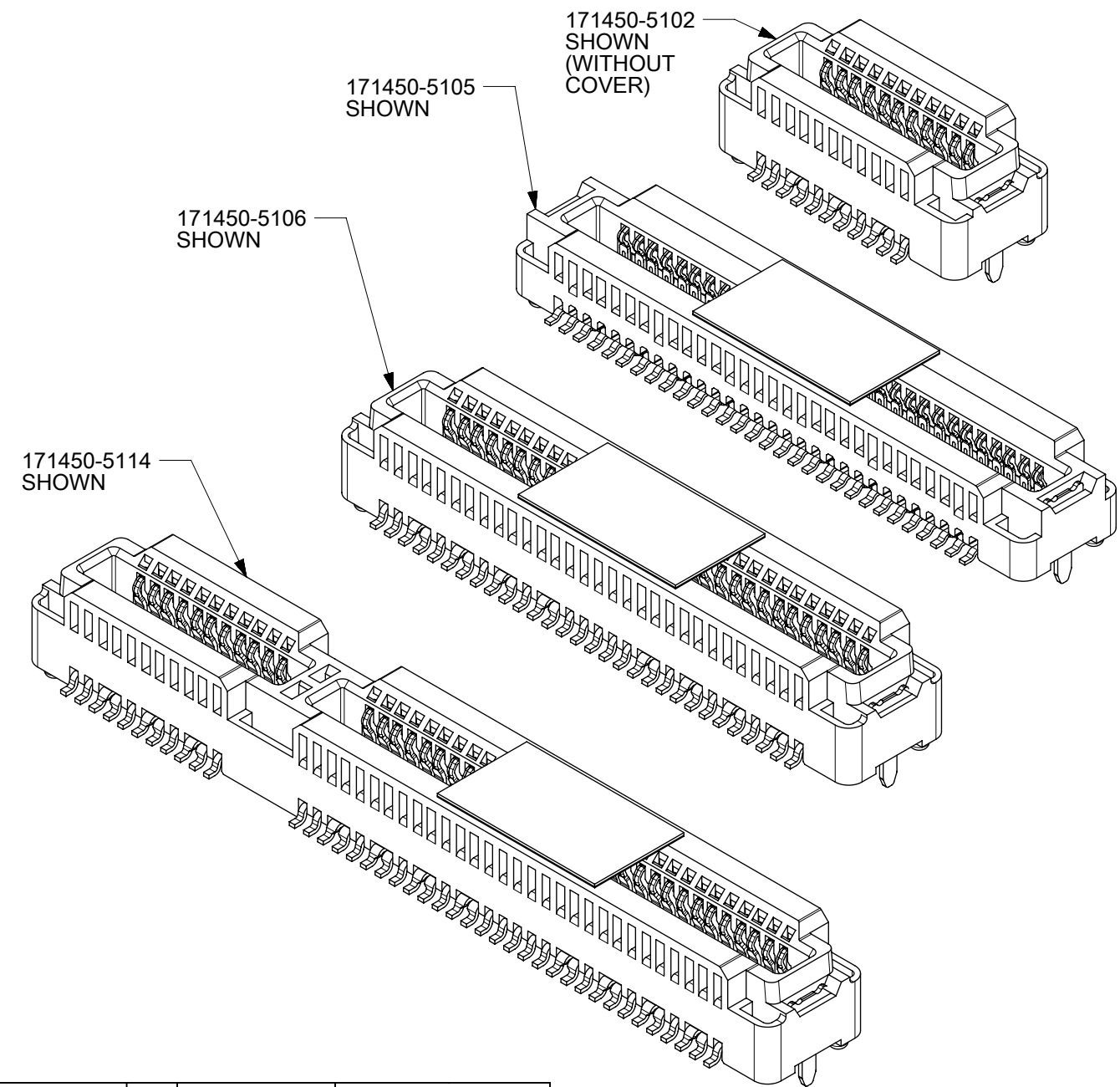
- NOTES:
- MATERIALS: HOUSING: LCP, UL94V-0, BLACK
CONTACTS: HIGH PERFORMANCE COPPER ALLOY
 - FINISH: 0.76 μm MIN SELECT GOLD IN CONTACT AREA,
SELECT MATTE TIN IN TAIL AREA, OVERALL NICKEL.
 - PRODUCT SPECIFICATION: PS-171446-0001
 - PACKAGING SPECIFICATION: PK-70873-6002
 - MATES WITH SPEEDSTACK PLUGS: 171446 & 171810
 - APPLICATION SPECIFICATION: AS-171450-9999
 - COSMETIC SPECIFICATION: PS-45499-002 CLASS B
 - PART STATUS: CONTACT MOLEX
 - DIM D ON THIS DRAWING PLUS DIM D ON DRAWING # SD-171446-1000
EQUALS THE SYSTEM MATED STACK HEIGHT
 - PARTS SHIPPED WITH PICK AND PLACE COVERS.

THIS DRAWING CONTAINS INFORMATION THAT IS PROPRIETARY TO MOLEX ELECTRONIC TECHNOLOGIES, LLC AND SHOULD NOT BE USED WITHOUT WRITTEN PERMISSION

DIMENSION UNITS mm	SCALE 10:1	CURRENT REV DESC: ADD -5105		
GENERAL TOLERANCES (UNLESS SPECIFIED)		<p>molex</p> <p>SPEEDSTACK RECEPTACLE ASSEMBLY SALES DRAWING</p> <p>PRODUCT CUSTOMER DRAWING</p>		
ANGULAR TOL	± 0.5°			
4 PLACES	±			
3 PLACES	±			
2 PLACES	± 0.13			
1 PLACE	± 0.25	EC NO: 623611	2019/09/03	DOCUMENT NUMBER
0 PLACES	±	DRWN: JBINGHAM	2016/08/25	SD-171450-5000
DRAFT WHERE APPLICABLE MUST REMAIN WITHIN DIMENSIONS		CHK'D: KLANG	2019/09/06	DOC TYPE
THIRD ANGLE PROJECTION		APPR: KLANG	2019/09/06	PSD
DRAWING		INITIAL REVISION:		DOC PART
B-SIZE		DRWN: JBINGHAM	2016/08/25	001
SERIES		APPR: JBINGHAM	2016/09/07	REVISION
171450		MATERIAL NUMBER		B
SEE CHART		CUSTOMER		SHEET NUMBER
GENERAL MARKET				1 OF 8

MEZZANINE (PLUG & RECEPTACLE) STACKING CHART

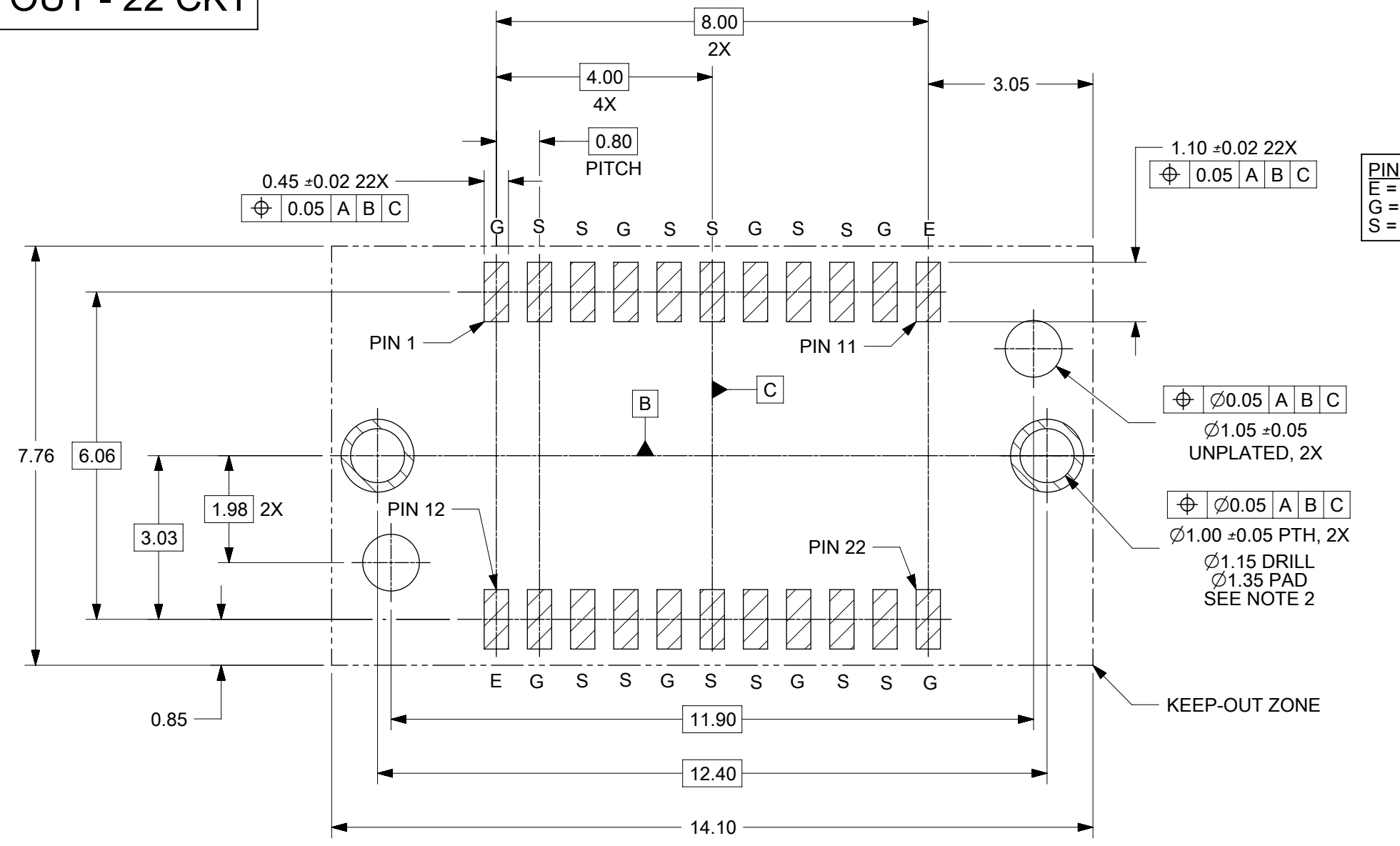
RECEPTACLE OPTIONS		PLUG OPTIONS (1mm WIPE)				PLUG OPTIONS (2mm WIPE)				
		HEIGHT	1mm	2mm	3mm	4mm	1mm	2mm	3mm	4mm
22 CKT	171446-1101	171446-1102	171446-1103	171446-1104	171446-1105	171446-1106	171446-1107	171446-1108		
60 CKT	171446-1109	171446-1110	171446-1111	171446-1112	171446-1113	171446-1114	171446-1115	171446-1116		
60 CKT	171450-5105	3mm	4/1	5/1	6/1	7/1	N/A			
22 CKT	171450-5102	4mm	5/1	6/1	7/1	8/1	5/2	6/2	7/2	8/2
60 CKT	171450-5106									
82 CKT	171450-5114									
CIRCUITS	MOLEX P/N	HEIGHT	STACK HEIGHT (DIM E)/WIPE (DIM F)							



THIS DRAWING CONTAINS INFORMATION THAT IS PROPRIETARY TO MOLEX ELECTRONIC TECHNOLOGIES, LLC AND SHOULD NOT BE USED WITHOUT WRITTEN PERMISSION

DIMENSION UNITS mm	SCALE 10:1	CURRENT REV DESC: ADD -5105				
GENERAL TOLERANCES (UNLESS SPECIFIED)		EC NO: 623611	2019/09/03			
ANGULAR TOL ± 0.5°		DRWN: JBINGHAM	2019/09/06	PRODUCT CUSTOMER DRAWING		
4 PLACES ±		CHK'D: KLANG	2019/09/06	DOCUMENT NUMBER		
3 PLACES ±		APPR: KLANG	2019/09/06	SD-171450-5000		
2 PLACES ± 0.13		INITIAL REVISION:		DOC TYPE	DOC PART	REVISION
1 PLACE ± 0.25		DRWN: JBINGHAM	2016/08/25	PSD	001	B
0 PLACES ±		APPR: JBINGHAM	2016/09/07	SHEET NUMBER		
DRAFT WHERE APPLICABLE MUST REMAIN WITHIN DIMENSIONS	THIRD ANGLE PROJECTION	DRAWING	SERIES	MATERIAL NUMBER	CUSTOMER	
		B-SIZE	171450	SEE CHART	GENERAL MARKET	2 OF 8

PCB LAYOUT - 22 CKT



PINOUT LEGEND
 E = EXTRA
 G = GROUND
 S = SIGNAL

⊕ 0.05 A B C
 Ø1.05 ±0.05
 UNPLATED, 2X

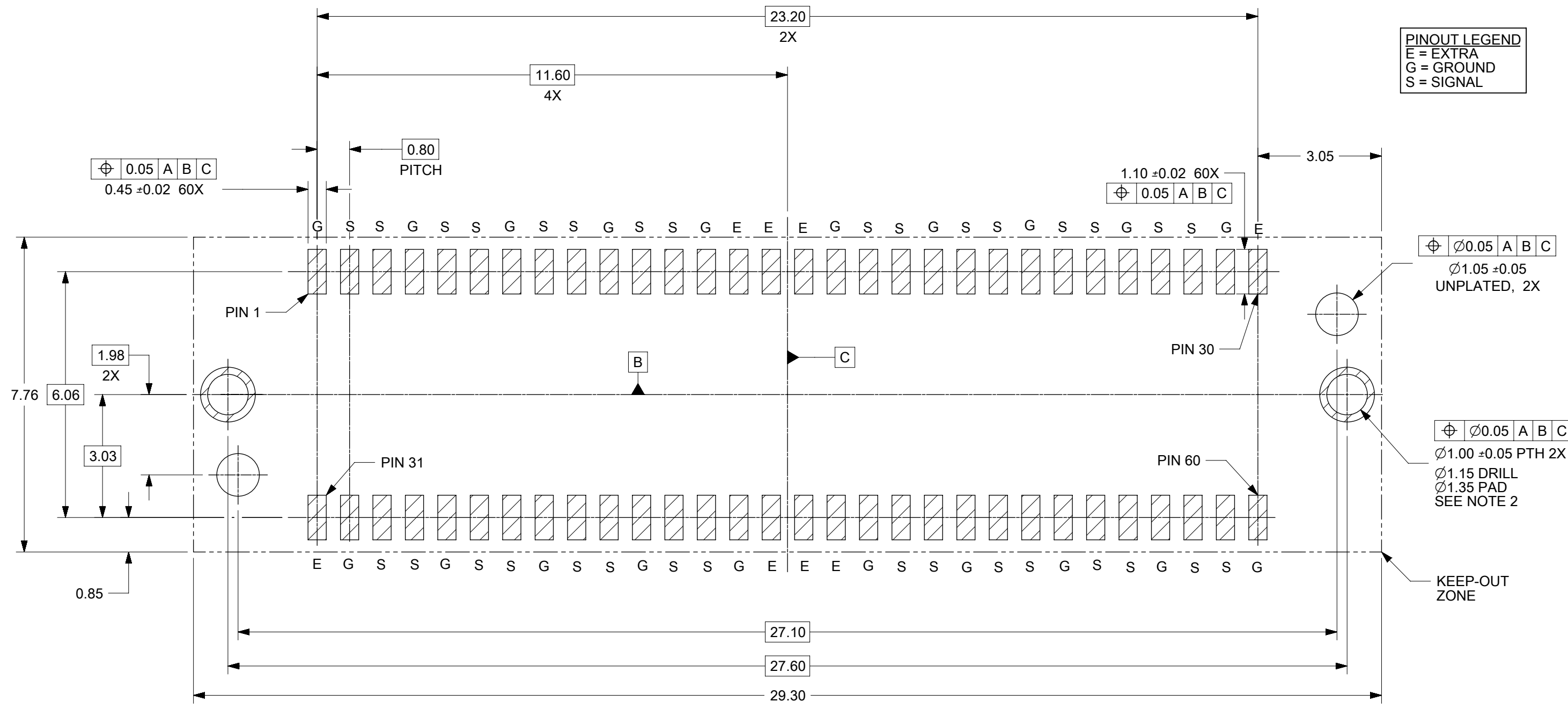
⊕ 0.05 A B C
 Ø1.00 ±0.05 PTH, 2X
 Ø1.15 DRILL
 Ø1.35 PAD
 SEE NOTE 2

PCB LAYOUT (COMPONENT SIDE)
 SOLDER PASTE THICKNESS: 0.15 MIN
 DATUM **A** IS THE BOTTOM SURFACE OF THE PCB

- NOTES:**
- PIN NUMBERING IS FOR REFERENCE ONLY. OTHER PIN NUMBERS WILL NOT AFFECT THE OPERATION OF THE CONNECTOR.
 - RETENTION NAIL MUST BE SOLDERED ONTO THE PCB FOR PROPER CONNECTOR FUNCTION.

THIS DRAWING CONTAINS INFORMATION THAT IS PROPRIETARY TO MOLEX ELECTRONIC TECHNOLOGIES, LLC AND SHOULD NOT BE USED WITHOUT WRITTEN PERMISSION									
DIMENSION UNITS	SCALE	CURRENT REV DESC: ADD -5105							
mm	10:1								
GENERAL TOLERANCES (UNLESS SPECIFIED)									
ANGULAR TOL	± 0.5°	EC NO: 623611 DRWN: JBINGHAM 2019/09/03 CHK'D: KLANG 2019/09/06 APPR: KLANG 2019/09/06							
4 PLACES	±	PRODUCT CUSTOMER DRAWING DOCUMENT NUMBER: SD-171450-5000 DOC TYPE: PSD DOC PART: 001 REVISION: B							
3 PLACES	±								
2 PLACES	± 0.13	INITIAL REVISION: DRWN: JBINGHAM 2016/08/25 APPR: JBINGHAM 2016/09/07							
1 PLACE	± 0.25	MATERIAL NUMBER: SEE CHART CUSTOMER: GENERAL MARKET SHEET NUMBER: 3 OF 8							
0 PLACES	±	DRAFT WHERE APPLICABLE MUST REMAIN WITHIN DIMENSIONS THIRD ANGLE PROJECTION DRAWING: B-SIZE SERIES: 171450							

PCB LAYOUT - 60 CKT



PINOUT LEGEND
 E = EXTRA
 G = GROUND
 S = SIGNAL

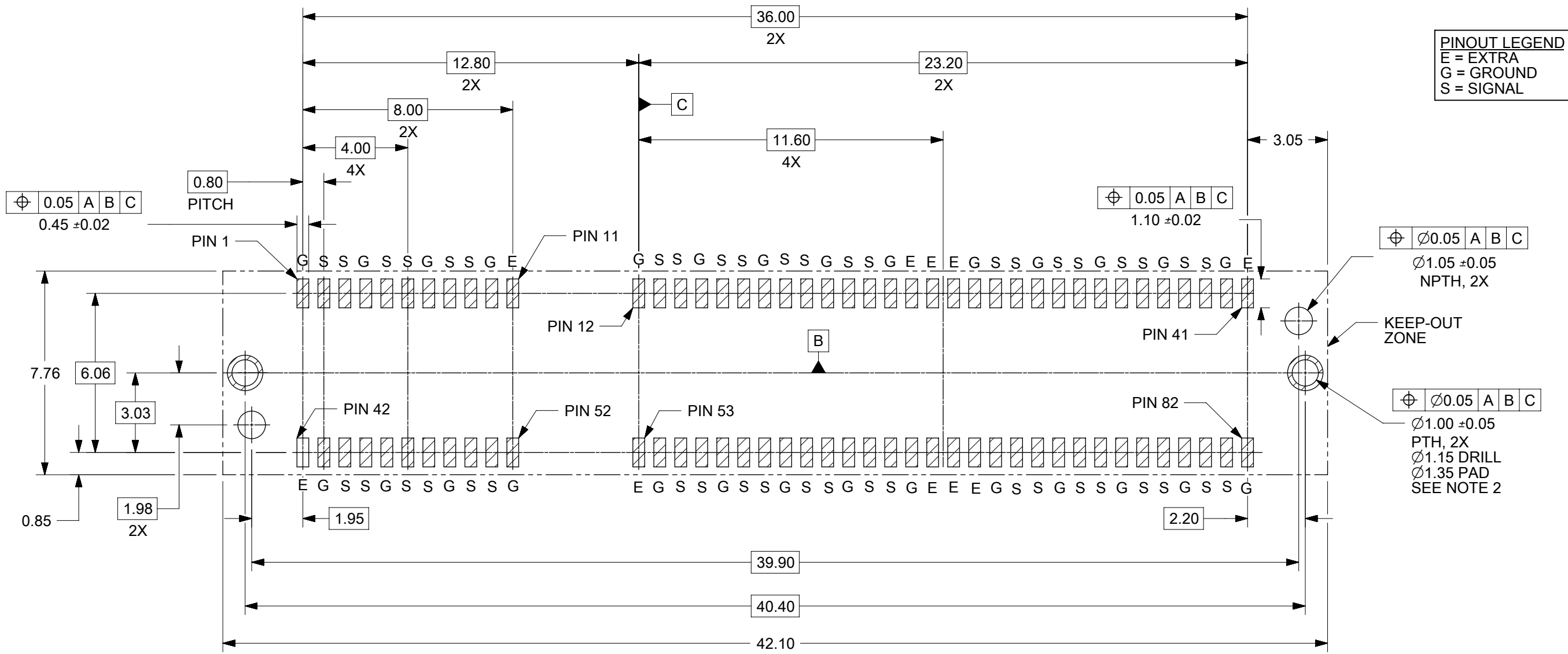
PCB LAYOUT (COMPONENT SIDE)
 SOLDER PASTE THICKNESS: 0.15 MIN
 DATUM **A** IS THE BOTTOM SURFACE OF THE PCB

NOTES:
 1. PIN NUMBERING IS FOR REFERENCE ONLY. OTHER PIN NUMBERS WILL NOT AFFECT THE OPERATION OF THE CONNECTOR.
 2. RETENTION NAIL MUST BE SOLDERED ONTO THE PCB FOR PROPER CONNECTOR FUNCTION.

THIS DRAWING CONTAINS INFORMATION THAT IS PROPRIETARY TO MOLEX ELECTRONIC TECHNOLOGIES, LLC AND SHOULD NOT BE USED WITHOUT WRITTEN PERMISSION									
DIMENSION UNITS		SCALE		CURRENT REV DESC: ADD -5105					
mm		10:1		molex SPEEDSTACK RECEPTACLE ASSEMBLY SALES DRAWING PRODUCT CUSTOMER DRAWING					
GENERAL TOLERANCES (UNLESS SPECIFIED)									
ANGULAR TOL ± 0.5°									
4 PLACES ±									
3 PLACES ±									
2 PLACES ± 0.13				EC NO: 623611		2019/09/03		DOCUMENT NUMBER	
1 PLACE ± 0.25				DRWN: JBINGHAM		2019/09/06		SD-171450-5000	
0 PLACES ±				CHK'D: KLANG		2019/09/07		DOC TYPE DOC PART REVISION	
DRAFT WHERE APPLICABLE MUST REMAIN WITHIN DIMENSIONS				APPR: KLANG		INITIAL REVISION:		PSD 001 B	
THIRD ANGLE PROJECTION				DRAWING		SERIES		MATERIAL NUMBER CUSTOMER SHEET NUMBER	
B-SIZE				171450		SEE CHART GENERAL MARKET		4 OF 8	

DOCUMENT STATUS	P1	RELEASE DATE	2019/09/06	02:51:33
-----------------	----	--------------	------------	----------

PCB LAYOUT - 82 CKT



PCB LAYOUT (COMPONENT SIDE)
 SOLDER PASTE THICKNESS: 0.15 MIN
 DATUM **A** IS THE BOTTOM SURFACE OF THE PCB

- NOTES:**
- PIN NUMBERING IS FOR REFERENCE ONLY. OTHER PIN NUMBERS WILL NOT AFFECT THE OPERATION OF THE CONNECTOR.
 - RETENTION NAIL MUST BE SOLDERED ONTO THE PCB FOR PROPER CONNECTOR FUNCTION.

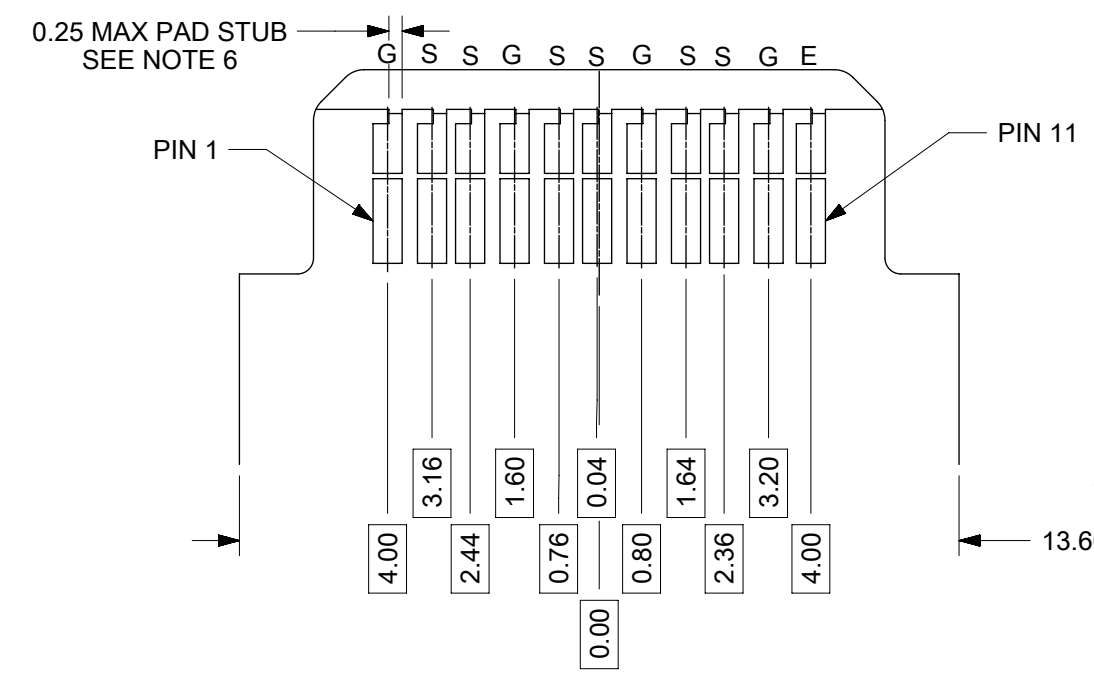
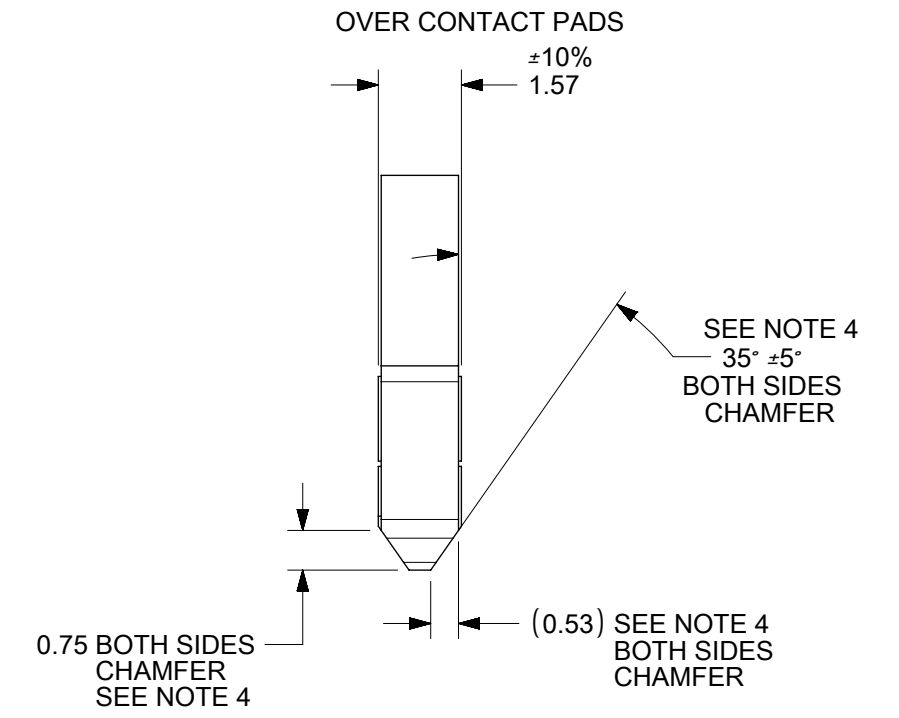
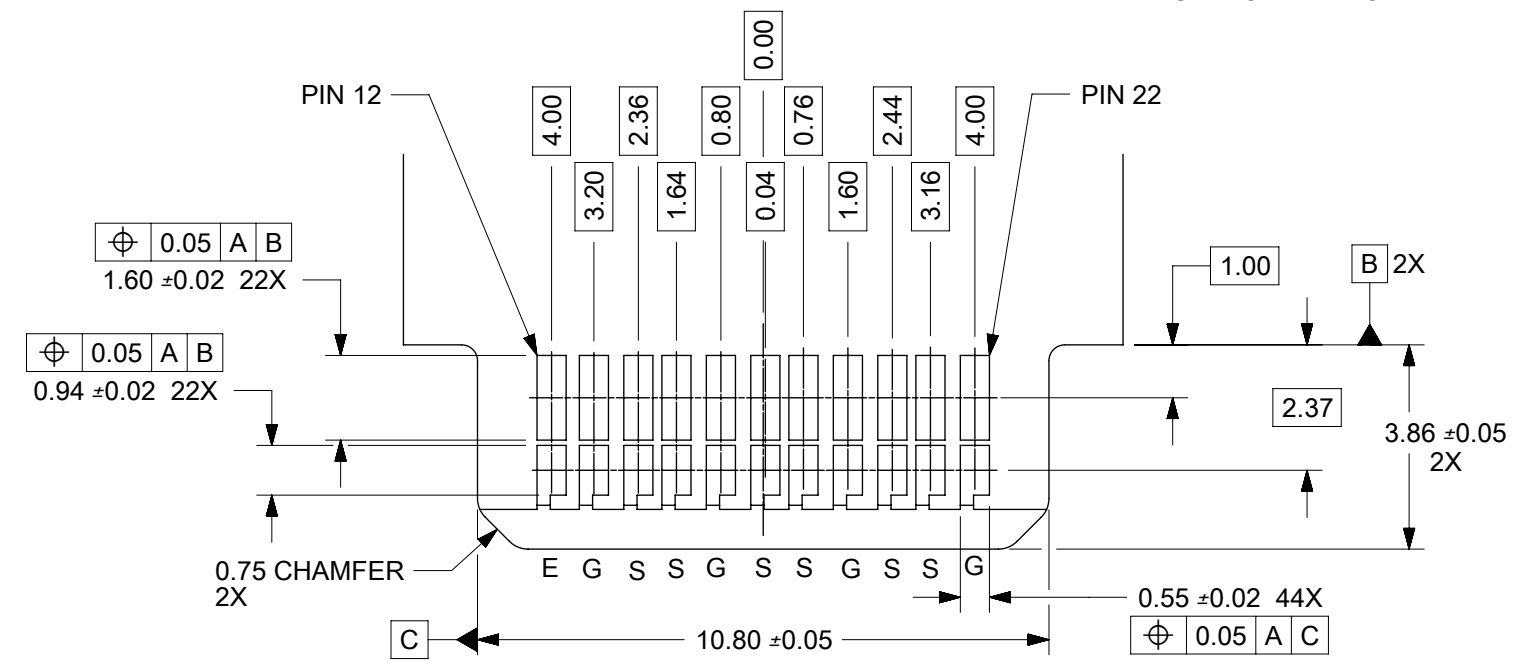
THIS DRAWING CONTAINS INFORMATION THAT IS PROPRIETARY TO MOLEX ELECTRONIC TECHNOLOGIES, LLC AND SHOULD NOT BE USED WITHOUT WRITTEN PERMISSION									
DIMENSION UNITS	SCALE	CURRENT REV DESC: ADD -5105							
mm	6:1								
GENERAL TOLERANCES (UNLESS SPECIFIED)									
ANGULAR TOL	± 0.5°	EC NO: 623611 DRWN: JBINGHAM 2019/09/03 CHK'D: KLANG 2019/09/06 APPR: KLANG 2019/09/06							
4 PLACES	±	INITIAL REVISION: DRWN: JBINGHAM 2016/08/25 APPR: JBINGHAM 2016/09/07							
3 PLACES	±								
2 PLACES	± 0.13	DOCUMENT NUMBER		DOC TYPE		DOC PART		REVISION	
1 PLACE	± 0.25	SD-171450-5000		PSD		001		B	
0 PLACES	±	MATERIAL NUMBER		CUSTOMER		SHEET NUMBER			
DRAFT WHERE APPLICABLE MUST REMAIN WITHIN DIMENSIONS		THIRD ANGLE PROJECTION		DRAWING		SERIES		SEE CHART	
		B-SIZE		171450		GENERAL MARKET		5 OF 8	

DOCUMENT STATUS	P1	RELEASE DATE	2019/09/06	02:51:33
-----------------	----	--------------	------------	----------

EDGECARD LAYOUT - 22 CKT

FRONT SIDE

DATUM **A** IS THE OPPOSITE SIDE OF THE PCB



BACK SIDE

DATUM **A** IS THE OPPOSITE SIDE OF THE PCB

PINOUT LEGEND
 E = EXTRA
 G = GROUND
 S = SIGNAL

- NOTES:**
- PIN NUMBERING IS FOR REFERENCE ONLY. OTHER PIN NUMBERS WILL NOT AFFECT THE OPERATION OF THE CONNECTOR.
 - EDGE CARD SHOULDERS STOP ON RECEPTACLE SHOULDERS. EDGE CARD BOTTOM DOES NOT CONTACT RECEPTACLE PCB.
 - PAD SET BACK FROM CHAMFER ENOUGH TO ACCOMMODATE LARGEST CHAMFER WITHOUT DAMAGE TO PAD EDGE.
 - CHAMFER DEPTH SHOULD BE AS LARGE AS PRACTICAL TO ENSURE CORRECT MATING TO THE RECEPTACLE.
 - ALL CHAMFERED EDGES SHOULD BE ROUNDED WHERE POSSIBLE.
 - INTERNAL PLATING BRIDGES ARE PREFERRED TO ELIMINATE PAD STUB.

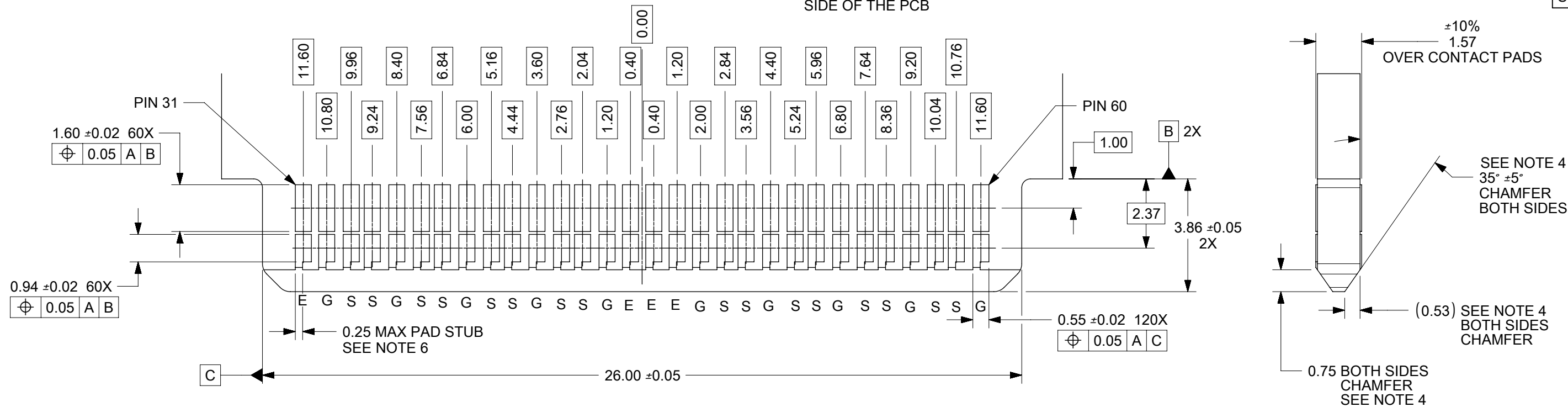
THIS DRAWING CONTAINS INFORMATION THAT IS PROPRIETARY TO MOLEX ELECTRONIC TECHNOLOGIES, LLC AND SHOULD NOT BE USED WITHOUT WRITTEN PERMISSION									
DIMENSION UNITS		SCALE		CURRENT REV DESC: ADD -5105					
mm		7:1		molex SPEEDSTACK RECEPTACLE ASSEMBLY SALES DRAWING PRODUCT CUSTOMER DRAWING					
GENERAL TOLERANCES (UNLESS SPECIFIED)									
ANGULAR TOL ± 0.5°									
4 PLACES ±									
3 PLACES ±									
2 PLACES ± 0.13				EC NO: 623611		2019/09/03		DOCUMENT NUMBER	
1 PLACE ± 0.25				DRWN: JBINGHAM		2019/09/06		SD-171450-5000	
0 PLACES ±				APPR: KLANG		2019/09/07		PSD 001 B	
DRAFT WHERE APPLICABLE MUST REMAIN WITHIN DIMENSIONS		THIRD ANGLE PROJECTION		DRAWING		SERIES		SHEET NUMBER	
		B-SIZE		171450		SEE CHART		GENERAL MARKET 6 OF 8	

EDGECARD LAYOUT - 60 CKT

FRONT SIDE

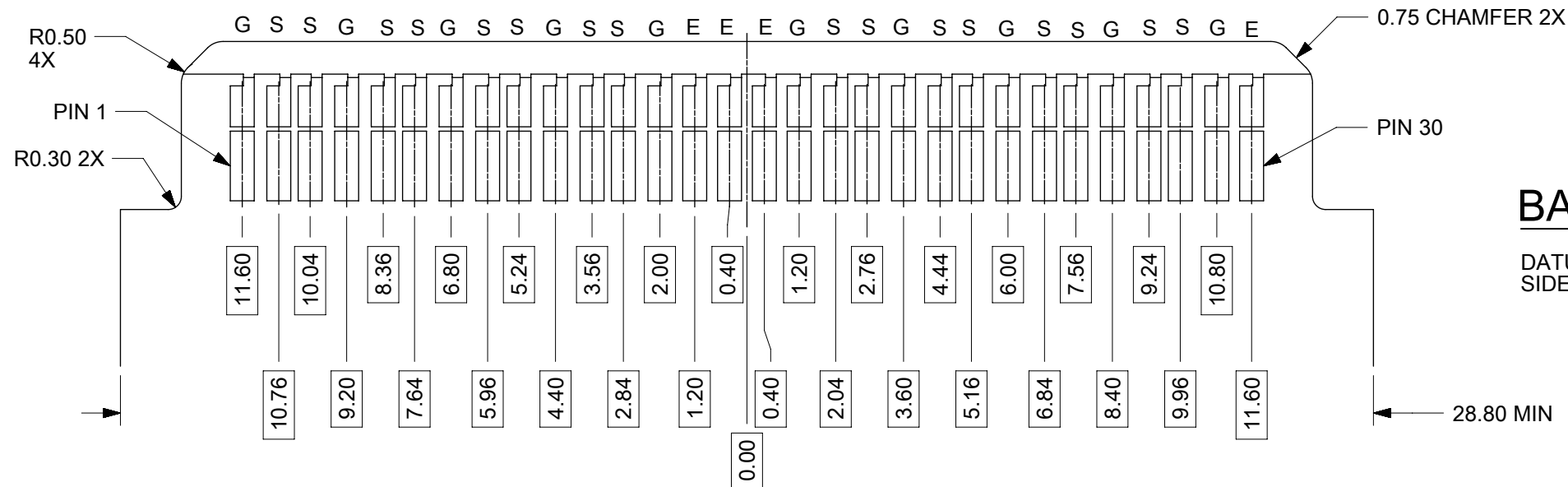
DATUM **A** IS THE OPPOSITE SIDE OF THE PCB

PINOUT LEGEND
 E = EXTRA
 G = GROUND
 S = SIGNAL



BACK SIDE

DATUM **A** IS THE OPPOSITE SIDE OF THE PCB



NOTES:

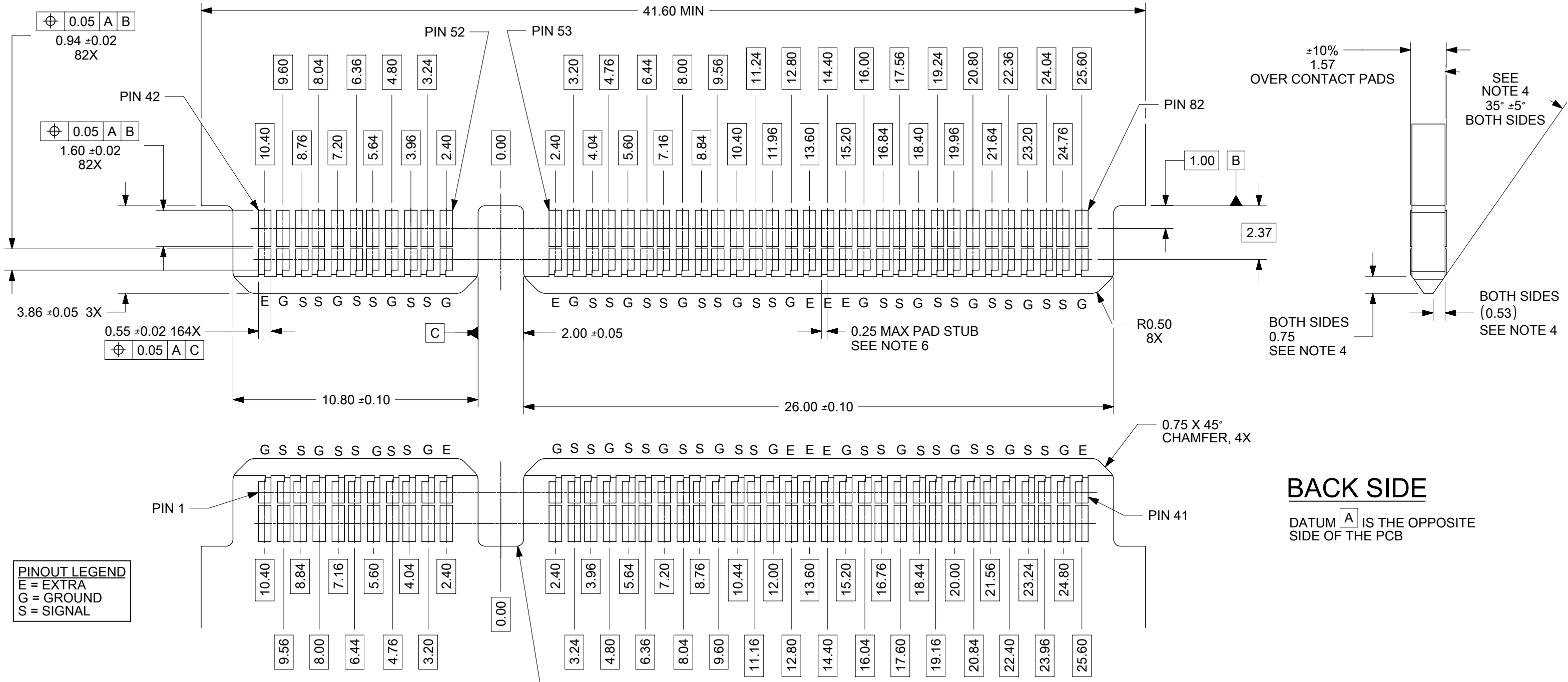
- PIN NUMBERING IS FOR REFERENCE ONLY. OTHER PIN NUMBERS WILL NOT AFFECT THE OPERATION OF THE CONNECTOR.
- EDGE CARD SHOULDERS STOP ON RECEPTACLE SHOULDERS. EDGE CARD BOTTOM DOES NOT CONTACT RECEPTACLE PCB.
- PAD SET BACK FROM CHAMFER ENOUGH TO ACCOMMODATE LARGEST CHAMFER WITHOUT DAMAGE TO PAD EDGE.
- CHAMFER DEPTH SHOULD BE AS LARGE AS PRACTICAL TO ENSURE CORRECT MATING TO THE RECEPTACLE.
- ALL CHAMFERED EDGES SHOULD BE ROUNDED WHERE POSSIBLE.
- INTERNAL PLATING BRIDGES ARE PREFERRED TO ELIMINATE PAD STUB.

THIS DRAWING CONTAINS INFORMATION THAT IS PROPRIETARY TO MOLEX ELECTRONIC TECHNOLOGIES, LLC AND SHOULD NOT BE USED WITHOUT WRITTEN PERMISSION											
DIMENSION UNITS		SCALE		CURRENT REV DESC: ADD -5105							
mm		7:1									
GENERAL TOLERANCES (UNLESS SPECIFIED)				EC NO: 623611						SPEEDSTACK RECEPTACLE ASSEMBLY SALES DRAWING	
ANGULAR TOL ± 0.5°				DRWN: JBINGHAM 2019/09/03							
4 PLACES ±				CHK'D: KLANG 2019/09/06							
3 PLACES ±				APPR: KLANG 2019/09/06						PRODUCT CUSTOMER DRAWING	
2 PLACES ± 0.13				INITIAL REVISION:							
1 PLACE ± 0.25				DRWN: JBINGHAM 2016/08/25						DOCUMENT NUMBER	
0 PLACES ±				APPR: JBINGHAM 2016/09/07						SD-171450-5000	
DRAFT WHERE APPLICABLE MUST REMAIN WITHIN DIMENSIONS				THIRD ANGLE PROJECTION		DRAWING		SERIES		MATERIAL NUMBER	
						B-SIZE		171450		SEE CHART	
								CUSTOMER		SHEET NUMBER	
								GENERAL MARKET		7 OF 8	

FRONT SIDE

EDGECARD LAYOUT - 82 CKT

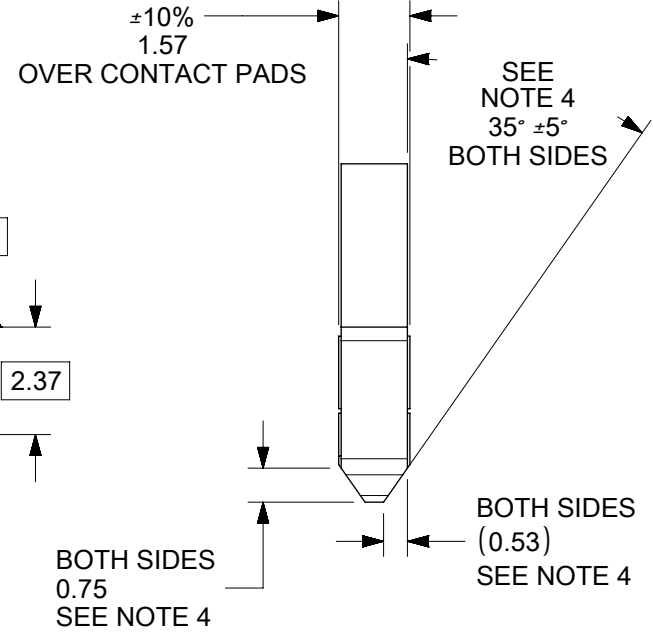
DATUM **A** IS THE OPPOSITE SIDE OF THE PCB



PINOUT LEGEND

- E = EXTRA
- G = GROUND
- S = SIGNAL

- NOTES:**
- PIN NUMBERING IS FOR REFERENCE ONLY. OTHER PIN NUMBERS WILL NOT AFFECT THE OPERATION OF THE CONNECTOR.
 - EDGE CARD SHOULDERS STOP ON RECEPTACLE SHOULDERS. EDGE CARD BOTTOM DOES NOT CONTACT RECEPTACLE PCB.
 - PAD SET BACK FROM CHAMFER ENOUGH TO ACCOMMODATE LARGEST CHAMFER WITHOUT DAMAGE TO PAD EDGE.
 - CHAMFER DEPTH SHOULD BE AS LARGE AS PRACTICAL TO ENSURE CORRECT MATING TO THE RECEPTACLE.
 - ALL CHAMFERED EDGES SHOULD BE ROUNDED WHERE POSSIBLE.
 - INTERNAL PLATING BRIDGES ARE PREFERRED TO ELIMINATE PAD STUB.



BACK SIDE

DATUM **A** IS THE OPPOSITE SIDE OF THE PCB

THIS DRAWING CONTAINS INFORMATION THAT IS PROPRIETARY TO MOLEX ELECTRONIC TECHNOLOGIES, LLC AND SHOULD NOT BE USED WITHOUT WRITTEN PERMISSION

DIMENSION UNITS	SCALE	CURRENT REV DESC: ADD -5105					
mm	6:1	<p>SPEEDSTACK RECEPTACLE ASSEMBLY SALES DRAWING</p>					
GENERAL TOLERANCES (UNLESS SPECIFIED)					EC NO: 623611	2019/09/03	<p>PRODUCT CUSTOMER DRAWING</p> <p>DOCUMENT NUMBER: SD-171450-5000</p> <p>DOC TYPE: PSD</p> <p>DOC PART: 001</p> <p>REVISION: B</p>
ANGULAR TOL	± 0.5°				DRWN: JBINGHAM	2019/09/06	
4 PLACES	±				CHK'D: KLANG	2019/09/06	
3 PLACES	±				APPR: KLANG	2019/09/06	
2 PLACES	± 0.13	INITIAL REVISION:					
1 PLACE	± 0.25	DRWN: JBINGHAM	2016/08/25	<p>MATERIAL NUMBER: SEE CHART</p> <p>CUSTOMER: GENERAL MARKET</p> <p>SHEET NUMBER: 8 OF 8</p>			
0 PLACES	±	APPR: JBINGHAM	2016/09/07				
DRAFT WHERE APPLICABLE MUST REMAIN WITHIN DIMENSIONS		THIRD ANGLE PROJECTION	DRAWING: B-SIZE	SERIES: 171450			