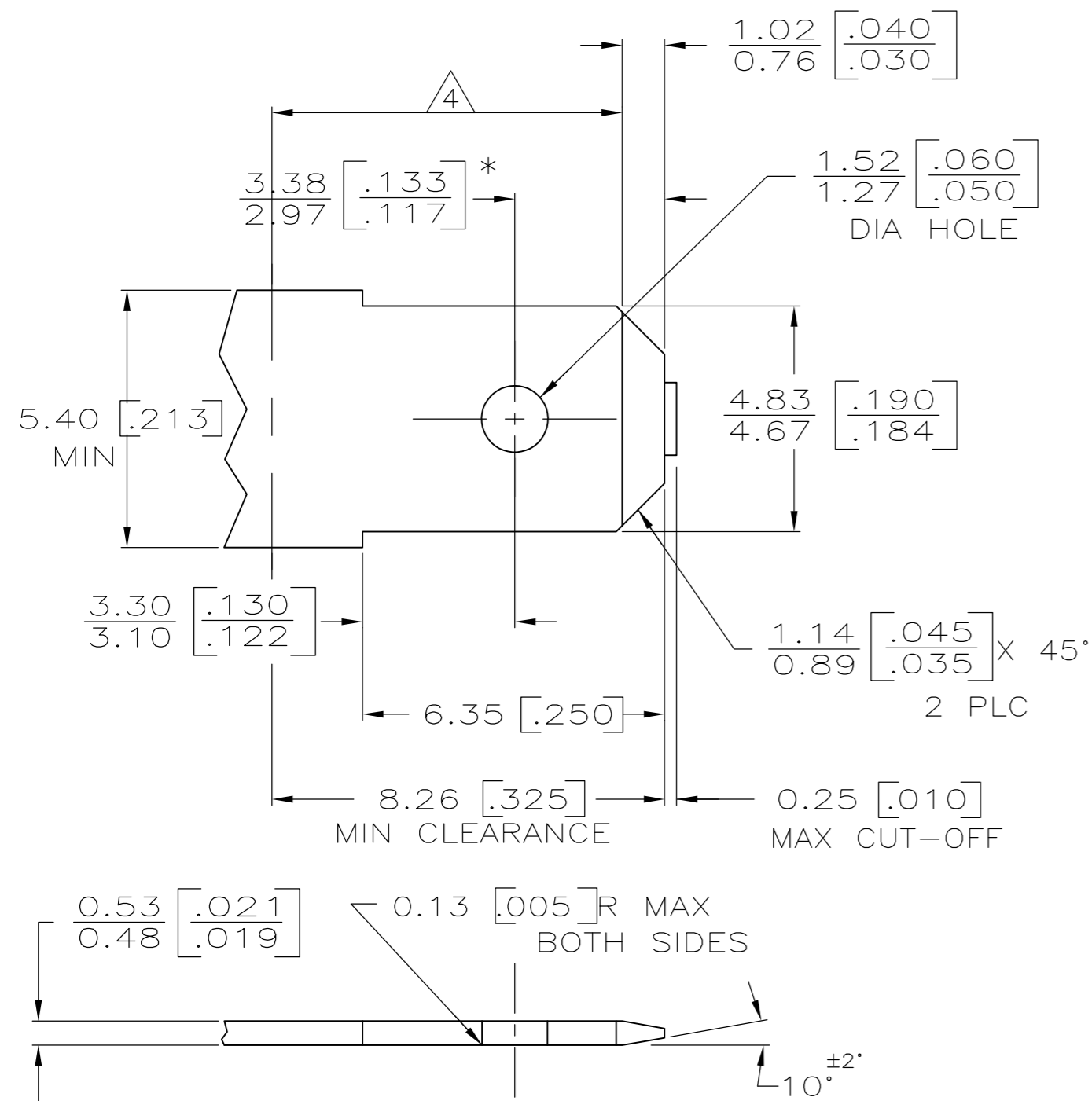


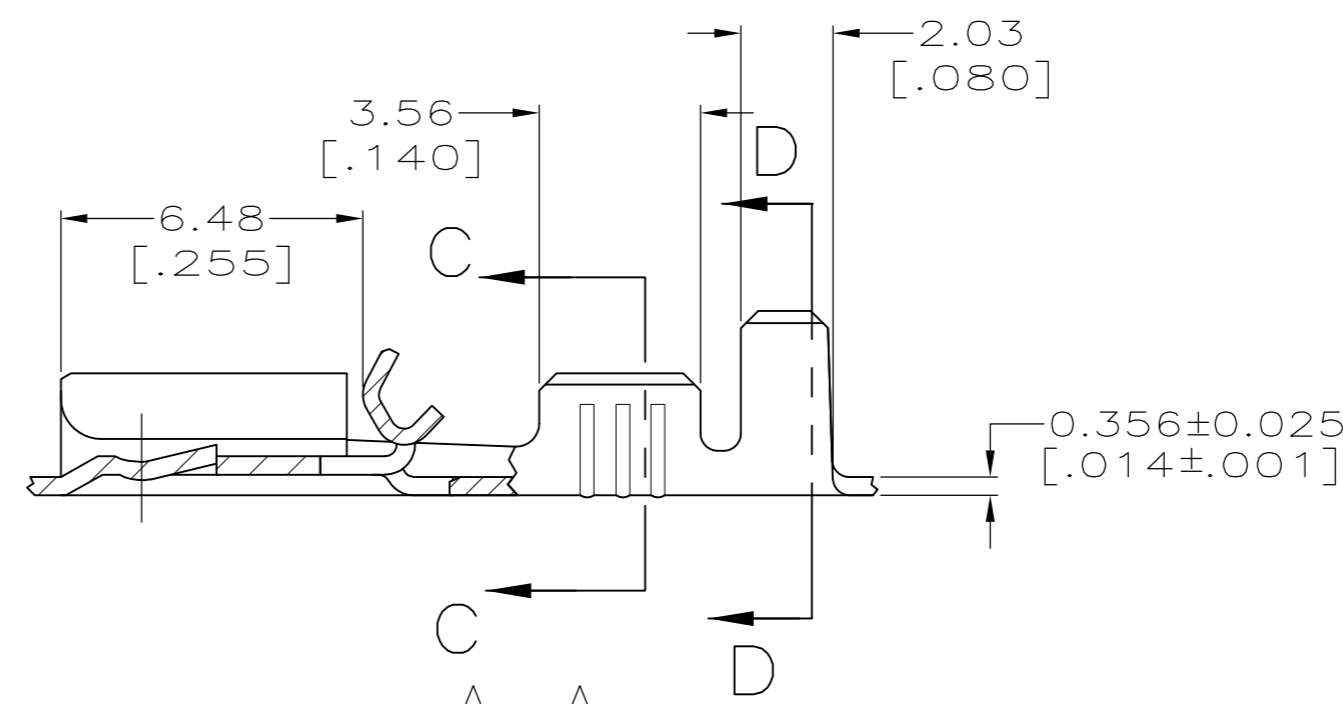
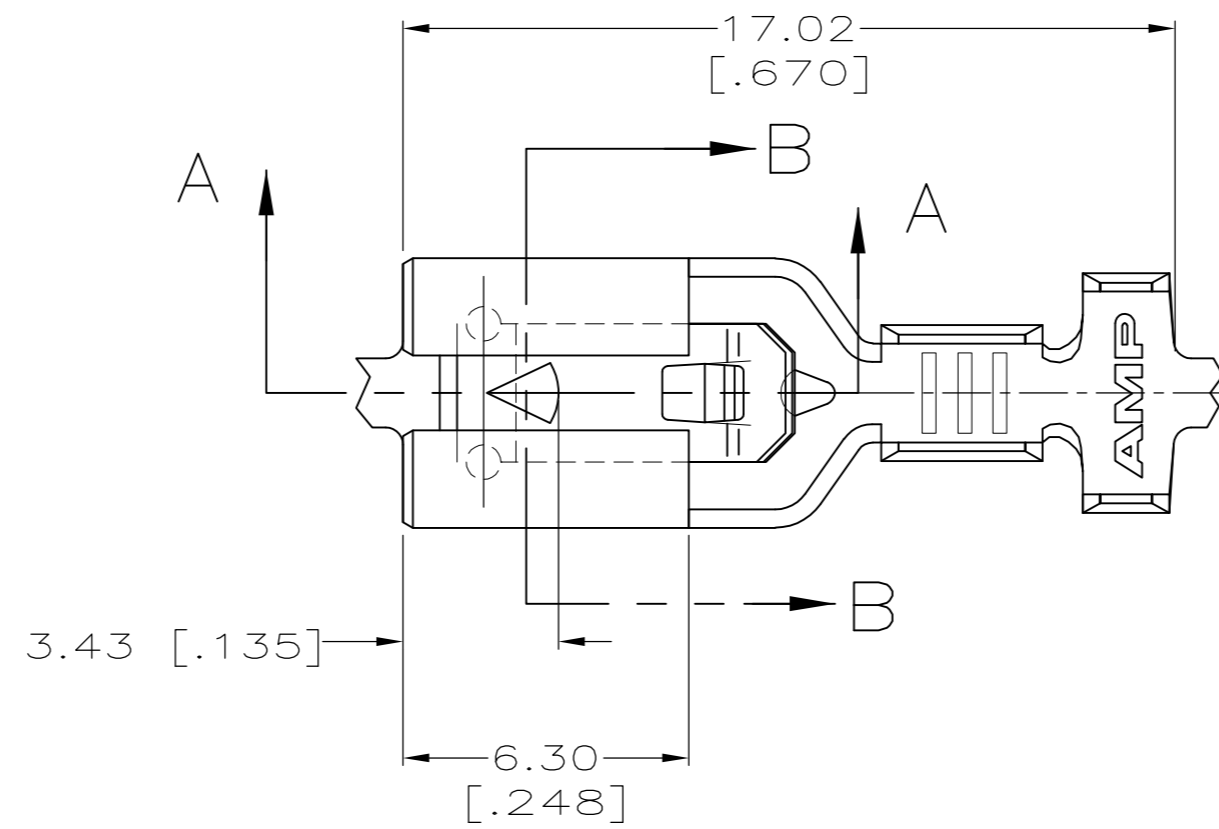
THIS DRAWING IS UNPUBLISHED. RELEASED FOR PUBLICATION
 © COPYRIGHT - By - ALL RIGHTS RESERVED.

| LOC | | DIST | | REVISIONS | | | |
|-----|-----|-------------|---------------------------|-----------|------|----|--|
| P | LTR | DESCRIPTION | DATE | DWN | APVD | | |
| AF | 50 | | | | | | |
| | | E | REVISED PER ECR-12-013486 | 10JAN13 | KH | KR | |

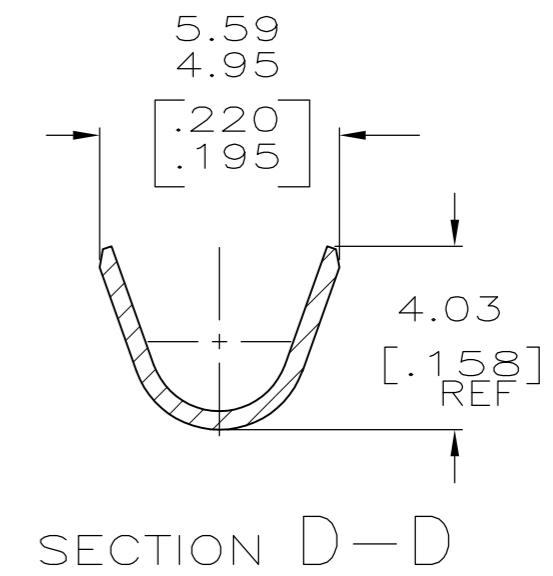
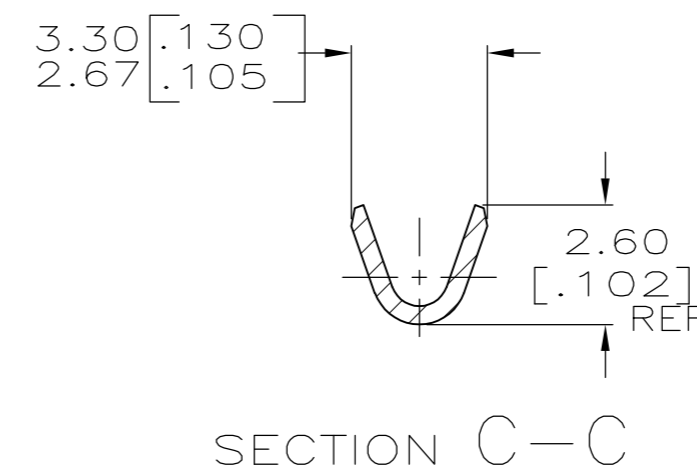
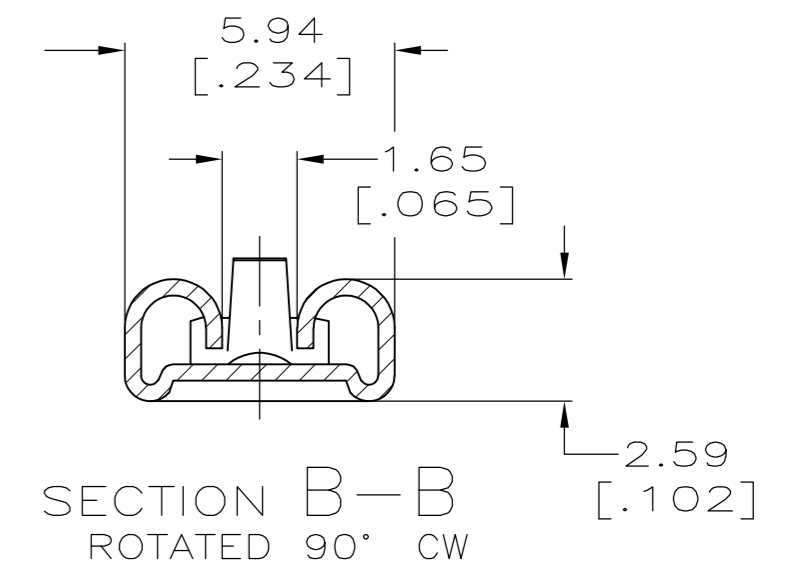
SUGGESTED MATING TAB



- MATL: #2 HARD BRASS OR NICKEL PLATE STEEL.
 - NO BURRS PERMISSIBLE AT HOLE.
 - TIN PLATING IS REQUIRED ON BRASS WHEN TERMINAL TEMPERATURE IS OVER 225°F
 - MUST BE FLAT WITHIN 0.076 [.003] OVER THIS LENGTH.
 - HOLE MUST BE SYMMETRICAL ABOUT TAB ϕ WITHIN 0.076 [.003].
- * TO BE USED ONLY WHEN SHOULDER IS ELIMINATED.



- CONTINUOUS STRIP ON REELS.
- ACCEPTS #22-#18 SINGLE WIRE SIZES, WIRE CRIMP IS 2.03 [.080], F TYPE.
- FITS INSULATION RANGE 2.29-3.30 [.090-.130] DIA, INSULATION CRIMP IS 3.94 [.155] F TYPE.



| | |
|--------|-----------|
| TIN | 1217113-2 |
| - | 1217113-1 |
| FINISH | PART NO. |

| | | | | |
|--|---------------|------------------|-----------|---------|
| THIS DRAWING IS A CONTROLLED DOCUMENT. | | DWN | JR RUTH | 9/17/98 |
| DIMENSIONS: mm [INCHES] | | CHK | MS FEHER | 9/17/98 |
| TOLERANCES UNLESS OTHERWISE SPECIFIED: | | APVD | E HOWARD | 9/17/98 |
| 0 PLC | ± - | PRODUCT SPEC | | |
| 1 PLC | ± - | APPLICATION SPEC | | |
| 2 PLC | ± 0.25 [.010] | | | |
| 3 PLC | ± - | | | |
| 4 PLC | ± - | | | |
| ANGLES | ± - | | | |
| MATERIAL | FINISH | WEIGHT | | |
| BRASS | SEE TABLE | | | |
| | | CUSTOMER DRAWING | SCALE | 6:1 |
| | | SIZE | A2 | 00779 |
| | | DRAWING NO | C=1217113 | |
| | | SHEET | 1 | OF 1 |
| | | REV | E | |

TE TE Connectivity
 RECEPTACLE, POSITIVE-LOCK, MARK III, 4.75 [.187] SERIES