

Element / Universal



Detailed product information can be found on www.bopla.de



- 12 sizes of the Element; 3 sizes of the Universal
- With air vents and/or recessed membrane keypad area, depending on design
- S version with snap lock
- A version with aluminium front panel in lid
- Depending on the model, lid screwing systems from above and quick-release fasteners are available

Colour:

Lid: light grey, similar to RAL 7035; base graphite grey, similar to RAL 7024; special colours on request

Protection class:

Plain: IP 40/DIN EN 60529;
with air vents: IP 30/DIN EN 60529

Enclosure material:

PS (polystyrene); for details see Technical Information

The special geometry of the enclosure half-shells offers easy mounting in the interior



F version: With a recessed area of 1 mm in the lid for the mounting of membrane keypads.



VL version: With vertical, injection-moulded air vents.



A version E 430 A on request: With an aluminium front panel in the cover area of the lid.



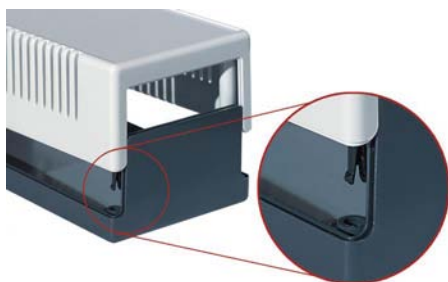
Element: Front panel moulded onto the base – the lid can be removed without dismantling the electronics.



Screwing is from below, so no screws are visible on the surface.



With large sizes supporting domes are provided in the base to give mechanical stability to the PCB.



An optional quick-release fastener – suitable for retrofitting – allows opening and closing of the enclosure without screwing (only with E 435... - E 470...).



As an option, the enclosure can be fixed to the wall using wall brackets – suitable for retrofitting – or a prepared suspension unit.



Universal: Enclosure consisting of two identical half-shells. Circuit boards can be fitted using mounting bosses or guide grooves.

Element | Enclosures



Enclosure, plain

Model	Order no.	A	B	C	c1
E 406	05406000	65	50	30	24
E 408	05408000	65	50	45	39
E 410	05410002	100	50	25	19
E 420	05420002	100	50	40	34
E 430	05430002	120	65	40	34
E 435	05435000	120	65	65	59
E 440	05440002	150	80	55	49
E 445	05445000	150	80	80	74
E 450	05450002	188	110	70	64
E 460	05460000	188	110	100	94
E 470	05470000*	188	110	120	114

Scope of delivery: Lid, base, 4 fixing screws



Enclosure, closed, with membrane keypad area

Model	Order no.	A	B	C	c1
E 406 F	05406700*	65	50	31	24
E 410 F	05410700*	100	50	26	19
E 420 F	05420700*	100	50	41	34
E 430 F	05430700*	120	65	41	34
E 440 F	05440700*	150	80	56	49
E 450 F	05450700*	188	110	71	64

Scope of delivery: Lid, base, 4 fixing screws



Enclosure with air vents in the lid and base

Model	Order no.	A	B	C	c1
E 406 VL	05406900	65	50	30	24
E 440 VL	05440200	150	80	55	49
E 450 VL	05450200	188	110	70	64

Scope of delivery: Lid, base, 4 fixing screws



Enclosure with air vents and membrane keypad area

Model	Order no.	A	B	C	c1
E 410 F VL	05410800*	100	50	26	19
E 420 F VL	05420800*	100	50	41	34
E 430 F VL	05430800*	120	65	41	34
E 440 F VL	05440800*	150	80	56	49
E 450 F VL	05450800*	188	110	71	64

Scope of delivery: Lid, base, 4 fixing screws



Enclosure with snap lock

Model	Order no.	A	B	C	c1
E 434 S	05434000	188	110	40	34

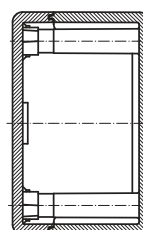
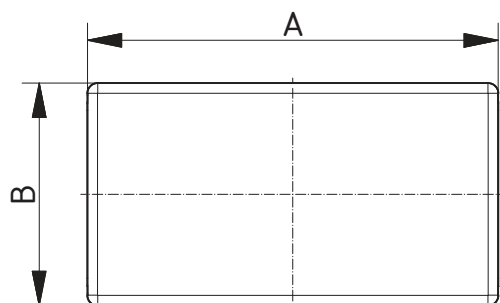
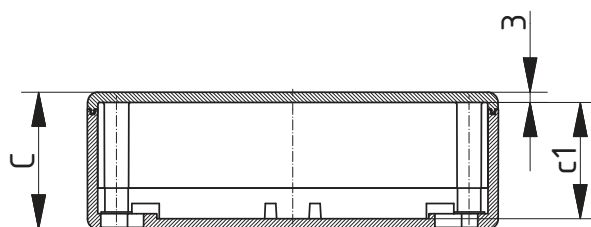
Scope of delivery: Lid, base, moulded-on snap lock

Element | Enclosures

Enclosure with front panel

Model	Order no.	A	B	C	c1
E 430 A	05430500*	120	65	40	33

Scope of delivery: Lid with aluminium front panel, base, 4 fixing screws



Z-2803245

For accessories, please see the end of the chapter

Element | Accessories



Wall brackets, nickel-plated sheet steel

Model	Order no.	Note
E-WL	25001500	For E 406-E 450
E-WL	25001600*	For E 460-E 470

Scope of delivery: 1 set = 4 pieces



Quick-release fastener, polyamide

Model	Order no.	Note
E-SV	25001700	For E 435, E 440 VL, E 445, E 450 VL, E 460, E 470

Scope of delivery: 1 set = 4 pieces



Mounting panel, laminated paper

Model	Order no.	Note
E-M	25000100*	For E 410-E 420
E-M	25000200*	For E 430-E 435
E-M	25000400*	For E 440-E 445
E-M	25000300*	For E 450-E 470, for E 434 S

Scope of delivery: 1 mounting panel



Lid assembly kit from above

Model	Order no.	Note
E-DO	25000500*	For E 430
E-DO	25000600*	For E 435
E-DO	25000700*	For E 440
E-DO	25000800*	For E 445
E-DO	25000910*	For E 450
E-DO	25001000*	For E 460
E-DO	25001100*	For E 470

Scope of delivery: Lid assembly kit from above, 4 screws including inserts for the base

Note: Enclosure must be mechanically processed.



Rubber feet

Model	Order no.	Colour	Note
GF	22009000	Black	Polyurethane, 65-75 Shore
E-F	25002200	White	Rubber, 67 Shore, for E 440-E 470, for E 434 S

Scope of delivery: 1 set = 4 pieces

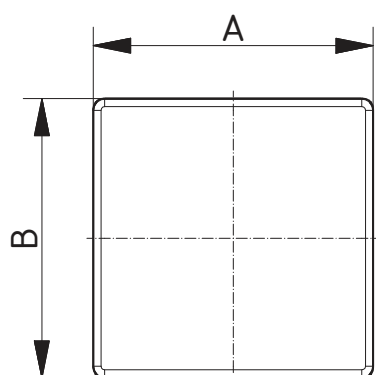
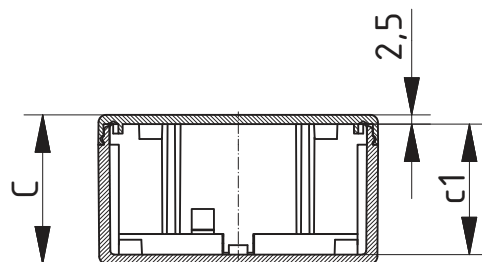
Universal | Enclosures

Enclosure with snap lock

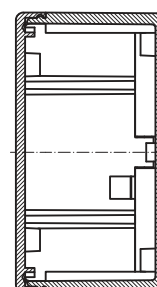
Model	Order no.	A	B	C	c1
U 50	06050000	50	50	30	25
U 75	06075000	75	75	40	35
U 100	06100000	100	100	60	55

Scope of delivery: Lid, base

Note: If required, the locking function can be permanently fixed by means of screws.



Z-2803246



For accessories, please see the end of the chapter