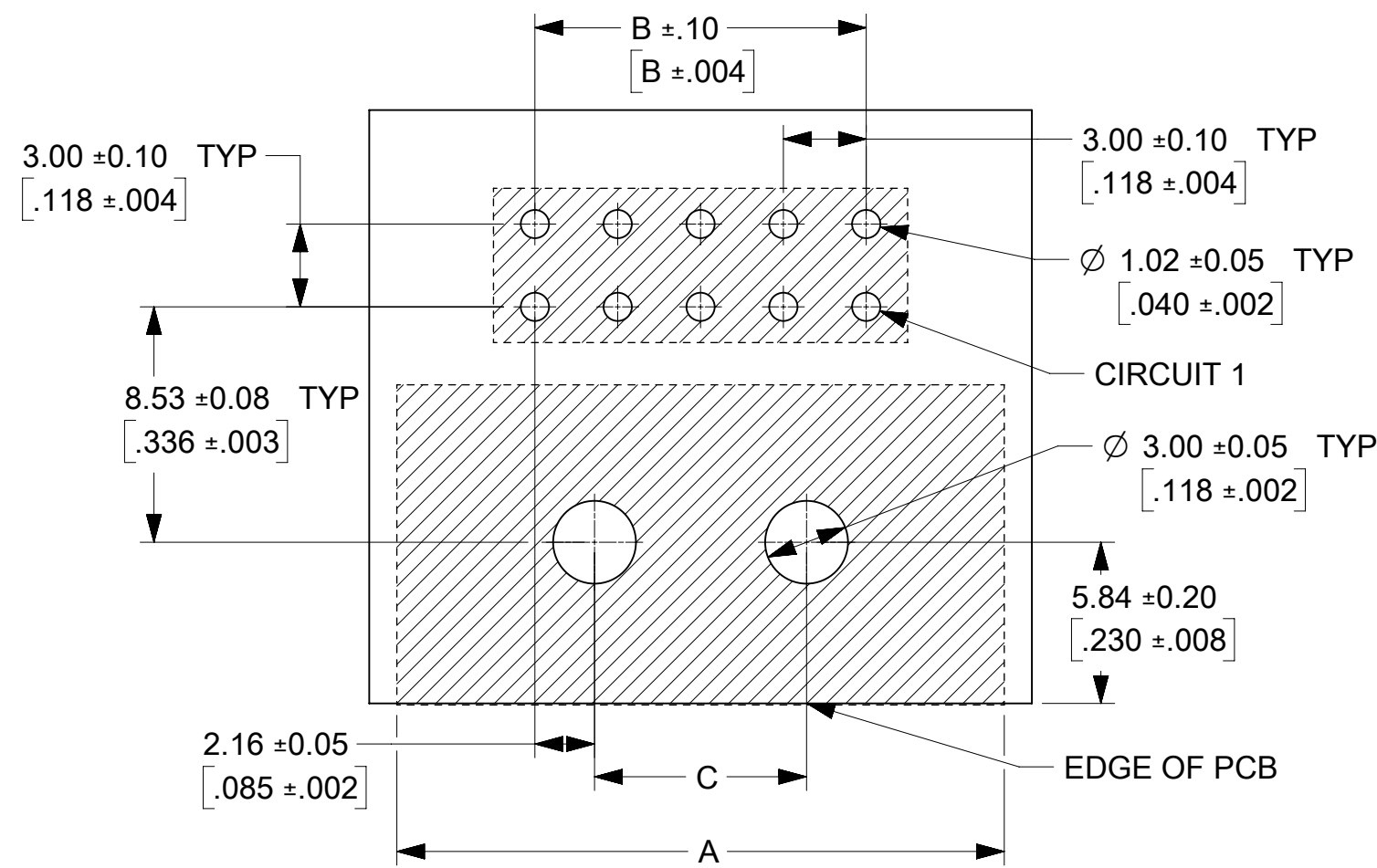
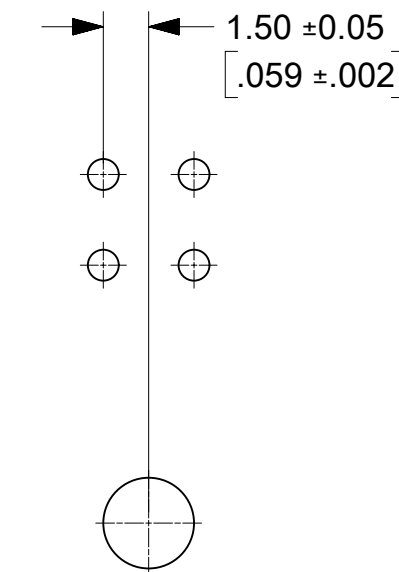


MAKE-FIRST/BREAK-LAST CIRCUIT TYPICAL (SEE SHEET 2 FOR CIRCUIT LOCATIONS)  
SECTION Z-Z



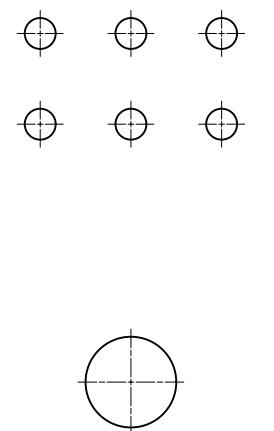
PCB LAYOUT: COMPONENT SIDE  
RECOMMENDED PCB THICKNESS 1.57/0.62

8 THRU 24 CIRCUITS



PCB LAYOUT:  
COMPONENT SIDE

4 CIRCUIT ONLY



PCB LAYOUT:  
COMPONENT SIDE

6 CIRCUIT ONLY

- NOTES :
- MATERIALS -  
HOUSING : LCP, GLASS-FILLED, UL94V-0, COLOR - BLACK  
TERMINAL : BRASS ALLOY  
TERMINAL POSITIONING STRIP : HIGH TEMPERATURE PET LAMINATE  
COLOR - NATURAL
  - FINISH -  
A - 0.00254/(.000100) MIN MATTE TIN OVER 0.00127/(.000050) MIN NICKEL.  
B - 0.00038/(.000015) MIN. SELECT GOLD IN CONTACT AREA,  
0.00254/(.000100) MIN. MATTE TIN ON SOLDER TAILS,  
BOTH OVER 0.00127/(.000050) MIN. NICKEL.  
C - 0.00076/(.000030) SELECT GOLD IN CONTACT AREA,  
0.00254/(.000100) MIN. MATTE TIN ON SOLDER TAILS,  
BOTH OVER 0.00127/(.000050) MIN. NICKEL.
  - PRODUCT SPECIFICATION : PS-44300-001  
EXCEPTION FOR CONTACT WIPE AS FOLLOWS:  
MAKE-FIRST/BREAK-LAST TERMINAL = 0.71/(.028) GREATER THAN PS-44300-001  
ALL OTHER TERMINALS = 0.56/(.022) LESS THAN PS-44300-001.
  - PACKAGING SPECIFICATION : PK-44428-001
  - THIS ASSEMBLY MATES WITH MOLEX BMI PANEL MOUNT RECEPTACLE SERIES 44133  
WITH FEMALE CRIMP TERMINAL SERIES 43030 OR 46235, OR BMI RECEPTACLE  
HEADER SERIES 44764 (RIGHT ANGLE) AND 44769 (VERTICAL).
  - PART CONFORMS TO CLASS 'B' REQUIREMENTS OF COSMETIC SPECIFICATION  
PS-45499-002.

FUNCTIONAL SYMBOLS										THIS DRAWING CONTAINS INFORMATION THAT IS PROPRIETARY TO MOLEX ELECTRONIC TECHNOLOGIES, LLC AND SHOULD NOT BE USED WITHOUT WRITTEN PERMISSION									
DIMENSION UNITS					SCALE					CURRENT REV DESC: FINISH OPTION "A" CHANGED TO 100UM INCH MATTE TIN; ADDED 44428-0841 AND -1233									
MM/INCH					NTS														
GENERAL TOLERANCES (UNLESS SPECIFIED)																			
4 PLACES ±					MM					INCH									
3 PLACES ±					± 0.01														
2 PLACES ±					± 0.25 ± 0.015														
1 PLACE ±					± 0.38 ±														
0 PLACES ±					±														
ANGULAR TOL ± 0.5 °																			
DRAFT WHERE APPLICABLE MUST REMAIN WITHIN DIMENSIONS					THIRD ANGLE PROJECTION					DRAWING SERIES									
					C-SIZE					44428									
DOCUMENT STATUS										PRODUCT CUSTOMER DRAWING									
P1										SD-44428-008									
RELEASE DATE										PSD 000 B									
2021/05/24 16:35:47										SEE CHART GENERAL MARKET 1 OF 2									

				X = MAKE-FIRST / BREAK-LAST																													
MATERIAL NO.	CKTS	FINISH OPTION	RETENTION PEG OPTION	DIM A	DIM B	DIM C	CKT 1	CKT 2	CKT 3	CKT 4	CKT 5	CKT 6	CKT 7	CKT 8	CKT 9	CKT 10	CKT 11	CKT 12	CKT 13	CKT 14	CKT 15	CKT 16	CKT 17	CKT 18	CKT 19	CKT 20	CKT 21	CKT 22	CKT 23	CKT 24			
	04																																
44428-0631	06	A	YES	16.00 .630	6.00 .236	N/A	X			X																							
44428-0640	06	B	YES	16.00 .630	6.00 .236	N/A				X		X																					
44428-0840	08	C	YES	19.00 .748	9.00 .354	4.68 .184	X				X																						
44428-0841	08	C	YES	19.00 .748	9.00 .354	4.68 .184	X							X																			
44428-1031	10	A	YES	22.00 .866	12.00 .472	7.68 .302	X				X	X																					
44428-1038	10	B	YES	22.00 .866	12.00 .472	7.68 .302		X					X																				
44428-1039	10	B	YES	22.00 .866	12.00 .472	7.68 .302					X																						
44428-1041	10	C	YES	22.00 .866	12.00 .472	7.68 .302					X																						
44428-1042	10	A	YES	22.00 .866	12.00 .472	7.68 .302	X																										
44428-1043	10	C	YES	22.00 .866	12.00 .472	7.68 .302	X																				X						
44428-1231	12	A	YES	25.00 .984	15.00 .590	10.68 .420	X					X	X																				
44428-1233	12	C	YES	25.00 .984	15.00 .590	10.68 .420	X							X																			
44428-1237	12	A	YES	25.00 .984	15.00 .590	10.68 .420						X			X																		
	14																																
44428-1631	16	A	YES	31.00 1.220	21.00 .827	16.68 .657	X	X				X	X										X	X									
44428-1636	16	C	NO	31.00 1.220	21.00 .827	16.68 .657	X		X	X		X	X	X	X	X	X	X	X	X			X										
44428-1837	18	A	YES	34.00 1.339	24.00 .945	19.68 .775	X	X	X	X	X	X	X	X	X																		
	20																																
	22																																
	24																																

CKT 1	CKT 2	CKT 3	CKT 4	CKT 5	CKT 6	CKT 7	CKT 8	CKT 9	CKT 10	CKT 11	CKT 12	CKT 13	CKT 14	CKT 15	CKT 16	CKT 17	CKT 18	CKT 19	CKT 20	CKT 21	CKT 22	CKT 23	CKT 24
-------	-------	-------	-------	-------	-------	-------	-------	-------	--------	--------	--------	--------	--------	--------	--------	--------	--------	--------	--------	--------	--------	--------	--------

FUNCTIONAL SYMBOLS	THIS DRAWING CONTAINS INFORMATION THAT IS PROPRIETARY TO MOLEX ELECTRONIC TECHNOLOGIES, LLC AND SHOULD NOT BE USED WITHOUT WRITTEN PERMISSION														
	DIMENSION UNITS		SCALE		CURRENT REV DESC: FINISH OPTION "A" CHANGED TO 100QUINCH MATTE TIN; ADDED 44428-0841 AND -1233										
$F_A = 0$	MM/INCH		NTS		GENERAL TOLERANCES (UNLESS SPECIFIED)										
$F_C = 0$															
$F_P = 0$					EC NO: 663296 DRWN: JEHRISMAN 2020/01/09 CHK'D: SSOUSEK 2021/05/13 APPR: FSMITH 2021/05/24										
DIVISIONAL SYMBOLS															
				INITIAL REVISION: DRWN: NNGUYEN 2013/01/10 APPR: FSMITH 2016/02/15											
				DOCUMENT NUMBER				DOC TYPE		DOC PART		REVISION			
				SD-44428-008				PSD		000		B			
				MATERIAL NUMBER				CUSTOMER				SHEET NUMBER			
				SEE CHART				GENERAL MARKET				2 OF 2			