



ACP PCB Stripline Connector for the 047 Semi-Rigid Cable

Technical Data Sheet

ACP-047-J-PCB Stripline

Description

The ACP Connector assembly is designed for use with the 047 Semi-Rigid Cable. This solderless, compression fit connector is reusable and field replaceable. Operating at a maximum frequency of 110 GHz, the ACP connector sets a new standard in performance, longevity and value in the coaxial connector industry.

Features

Max. Operating Frequency 110 GHz
 Insertion Loss (s₂₁) < 1dB to 98 GHz
 Return Loss (s₁₁) > -15 dB to 85 GHz
 >100,000 Mating Cycle Life
 Small Footprint (Ø9.91mm x 4.57mm)

Configuration

047 Semi-Rigid Cable
 50 Ohms
 2 Hole PCB Mount
 Solderless, Compression Contact
 Field Replaceable

Applications

General Purpose Test
 PCB Applications
 Signal Integrity Measurements

Chip Evaluation
 Test Fixtures
 Transmissions Systems

Performance by Frequency Band

Frequency (GHz)	Return Loss, Max. (dB)	VSWR, Max.	Insertion Loss, Max. (dB)
DC to 18	-29.50	1.06:1	0.052
18 to 27	-26.01	1.10:1	0.082
27 to 40	-22.83	1.11:1	0.067
40 to 50	-20.94	1.19:1	0.098
50 to 67	-18.65	1.26:1	0.161
67 to 85	-15.22	1.41:1	0.408
85 to 99	-11.23	1.83:1	0.946

Mechanical Specifications

Size (Full Assembly):	
Length (MM)	9.91
Width (MM)	4.57
Height (MM)	4.95
Weight (G)	0.49
Mounting Screw Spacing (MM)	7.16
Mounting Screw Type	#0-80
Mating Cycles (Interposer Only)	>100,000

Material Specifications

Component Description

Interposer
 Connector Assembly

Construction Material

Copper
 Brass

Surface Finish

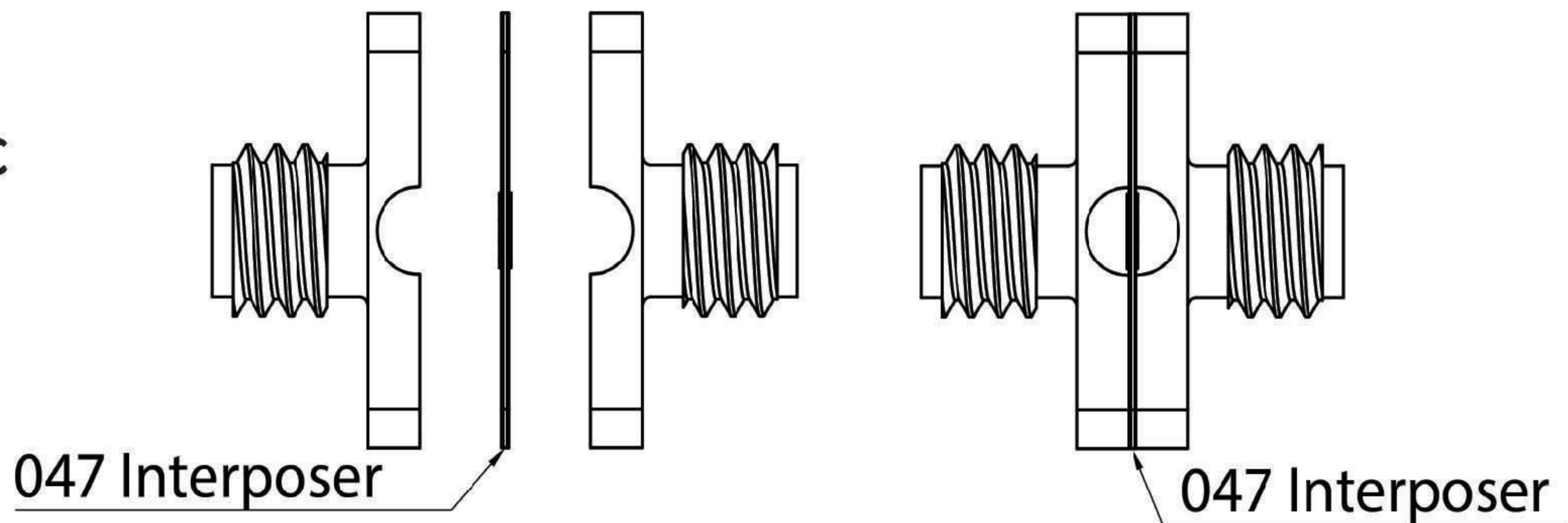
Nickel
 ENIG

Environmental Specifications

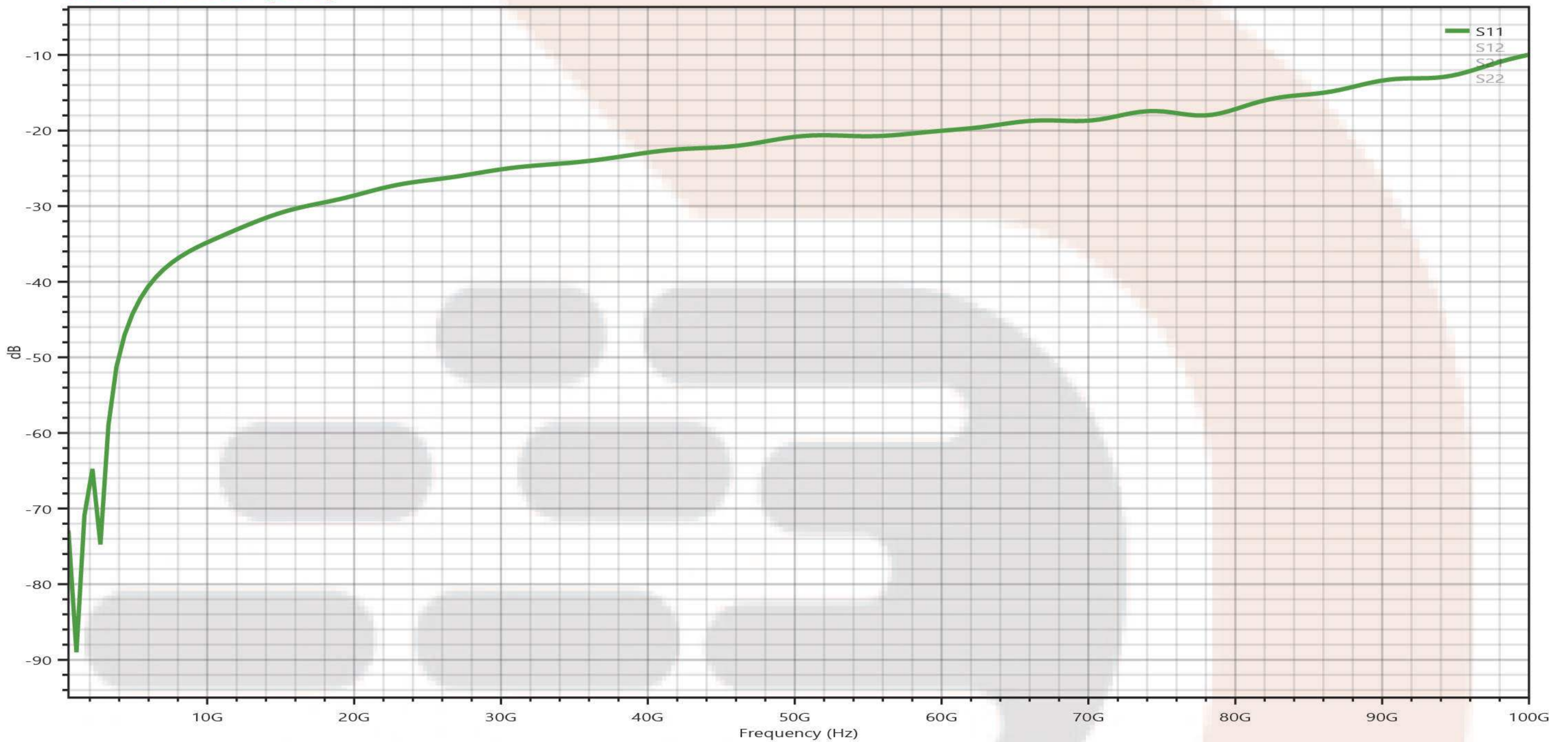
-55 to 140 °C (Continuous Operating Temperature)

**Typical Back-to-Back
Test Data to 100 GHz**

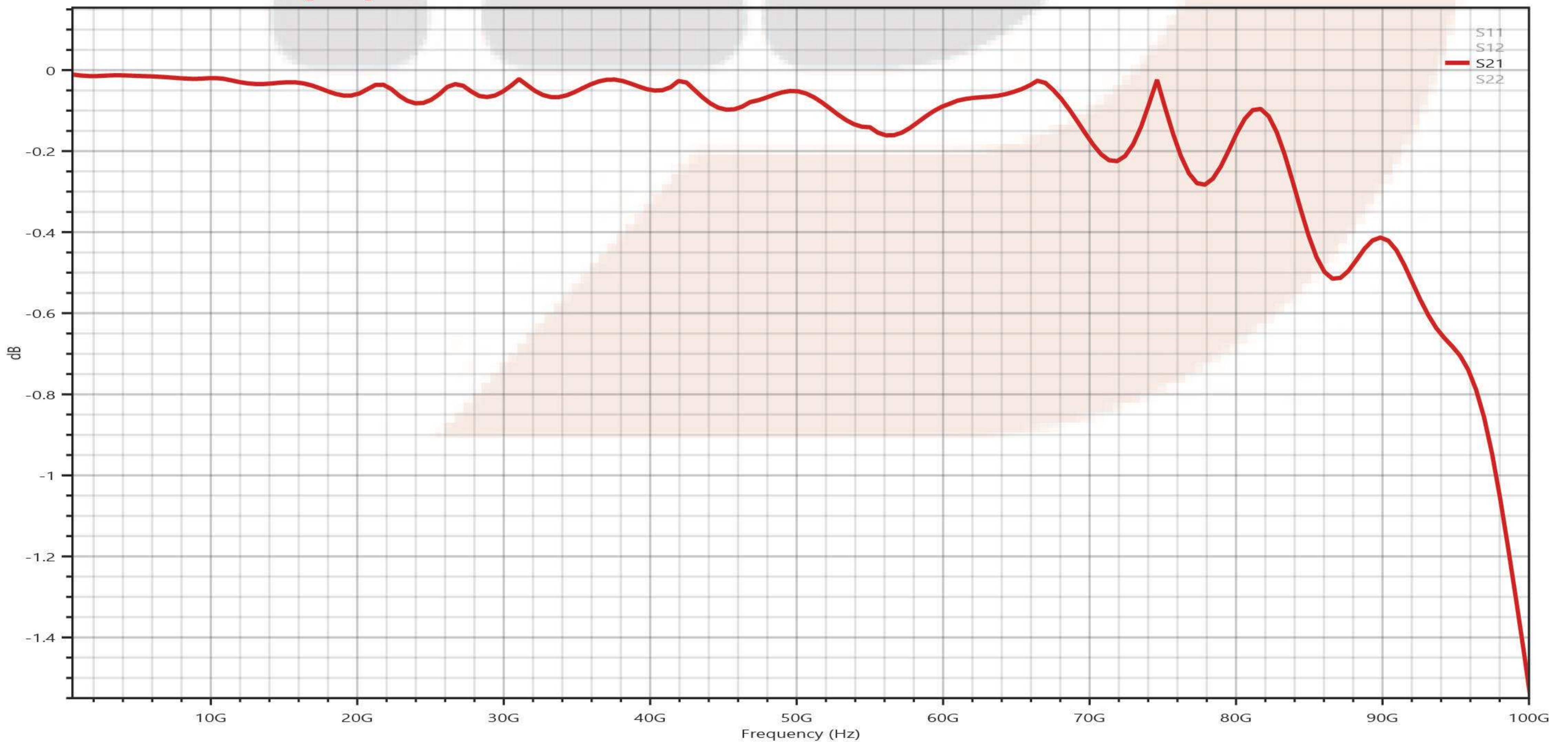
*3rd party Cycling, DC Current Capacity and RF Characterization reports (including s2p files) are available upon request

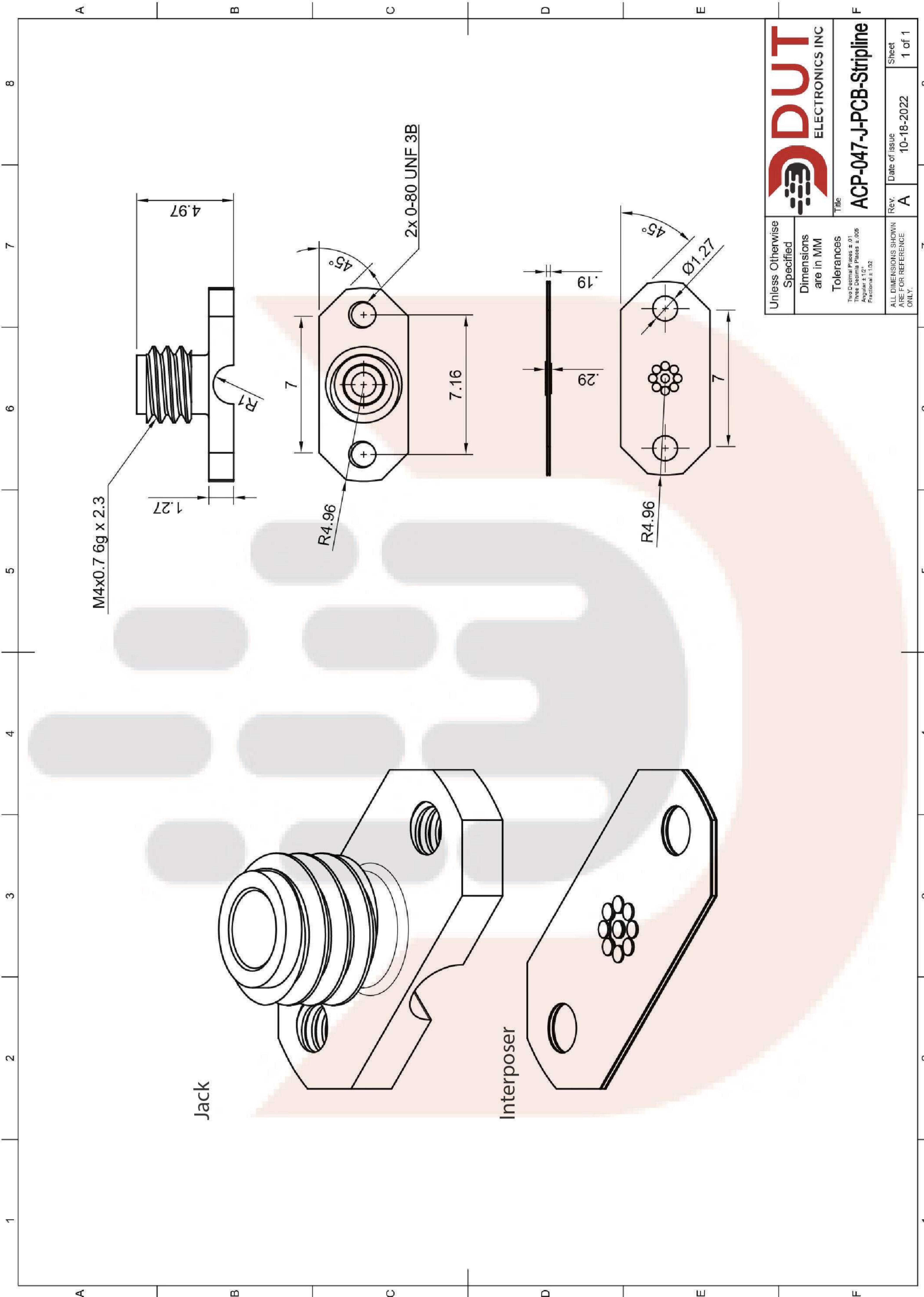


Return Loss (s11)



Insertion Loss (s21)





ACP-047-J-PCB-Stripline

Unless Otherwise Specified	Dimensions are in MM	Tolerances	Two Decimal Places ± .01 Three Decimal Places ± .005 Angular ± 1.2° Fractional ± 1/32
ALL DIMENSIONS SHOWN ARE FOR REFERENCE ONLY.			Rev: A
Date of Issue: 10-18-2022			Sheet: 1 of 1