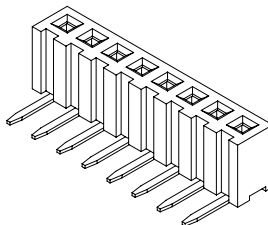




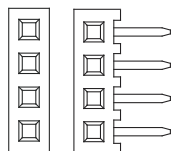
.079" [2.00 mm] Contact Centers, Female Headers, Straight/Right Angle/SMT

SPECIFICATIONS

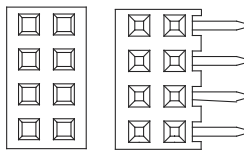
- 2 Amps current rating
- UL Flammability Rating: 94V-0
- Insulator Material: Black Nylon
- Contact Material: Phosphor Bronze



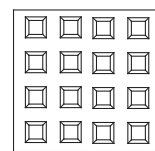
READOUT



SINGLE (1)

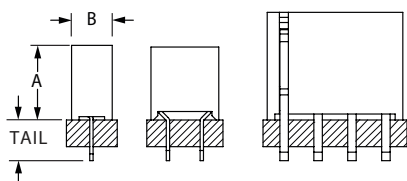


DUAL (2)



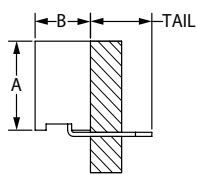
QUAD (4)

TERMINATION TYPE



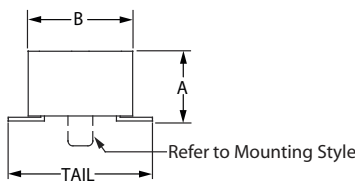
STRAIGHT

| P/N CODE | ROWS | TERMINATION TYPE | A | B | TAIL |
|----------|------|------------------|-------------|-------------|-------------|
| BFC | 1 | STRAIGHT | .173 [4.40] | .094 [2.40] | .094 [2.40] |
| AFC | 2 | STRAIGHT | .169 [4.30] | .157 [4.00] | .094 [2.40] |
| AFE | 2 | STRAIGHT | .169 [4.30] | .157 [4.00] | .110 [2.80] |
| EFC | 4 | STRAIGHT | .250 [6.35] | .315 [8.00] | .094 [2.40] |



RIGHT ANGLE

| P/N CODE | ROWS | TERMINATION TYPE | A | B | TAIL |
|----------|------|------------------|-------------|-------------|-------------|
| FGG | 1 | RIGHT ANGLE | .169 [4.30] | .110 [2.80] | .122 [3.10] |
| FJF | 2 | RIGHT ANGLE | .283 [7.20] | .191 [4.85] | .118 [3.00] |



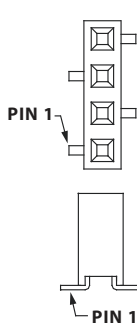
SMT

| P/N CODE | ROWS | TERMINATION TYPE | A | B | TAIL |
|----------|-----------------|------------------|-------------|-------------|-------------|
| BFL | 1 | SMT | .181 [4.60] | .094 [2.40] | .157 [4.00] |
| BHL | 1 | SMT | .169 [4.30] | .094 [2.40] | .157 [4.00] |
| GFN | 2 | SMT | .110 [2.80] | .165 [4.20] | .228 [5.80] |
| GHN | Replaced by GFN | | | | |
| FFK | 2 | SMT | .173 [4.40] | .157 [4.00] | .228 [5.80] |

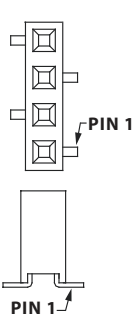
MOUNTING STYLE



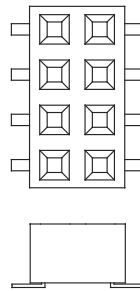
Straight or Right Angle (N)



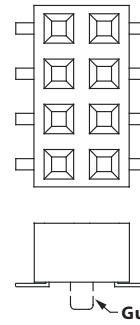
Single Row SMT, Pin 1 Left (C)



Single Row SMT, Pin 1 Right (D)



Dual Row SMT, Without Guide Posts (S)



Dual Row SMT, With Guide Posts (P)



.079" [2.00 mm] Contact Centers, Female Headers, Straight/Right Angle/SMT

PART NUMBER OPTIONS

MATERIALS (INSULATOR/CONTACT)
 NP = Nylon /Phosphor Bronze

CONTACT FINISH - RoHS Compliant

| Contact Surface | Termination |
|-------------------|-------------------------------|
| P = Gold Flash | Gold Flash (For 1 and 2 Rows) |
| R = .000020" Gold | .000100" Tin (For 4 Rows) |

Consult factory for other plating options.

CONTACT CENTERS
 N = .079" [2.00 mm]

NUMBER OF POSITIONS

| Positions Available | Termination |
|---|-------------|
| 2 Thru 40 = AFC, AFE, BFL, FFK, FGG, FJF, GFN | |
| 3 Thru 40 = BFC, BHL | |
| 5 Thru 30 = EFC | |

NUMBER OF ROWS (Opposite Page)

1 = One Row
 2 = Two Rows
 4 = Four Rows

RoHS COMPLIANT
 Consult Factory For Modifications

MOUNTING STYLE

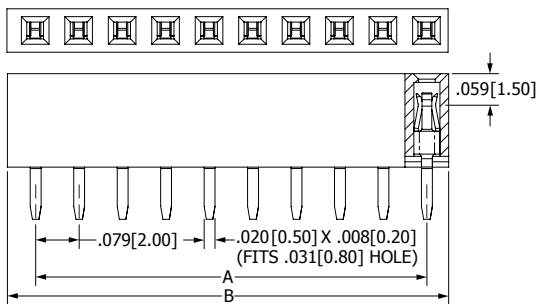
N = No Mounting
 C = SMT, Single row female, pin 1 Left
 D = SMT, Single row female, pin 1 Right
 P = Surface mount with guide Posts
 S = Surface mount without guide Posts

TERMINATION TYPE (Opposite Page)

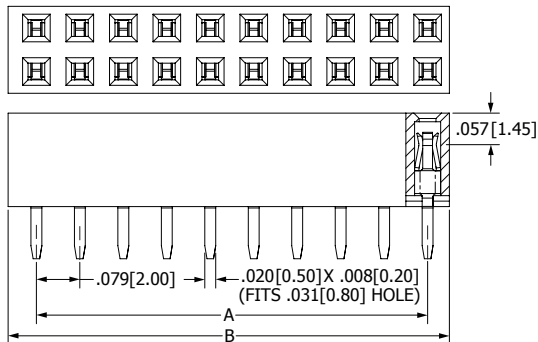
| | |
|-----------------|-------------------------|
| AFC = Thru Hole | Top Entry |
| AFE = Thru Hole | Top Entry/Closed Bottom |
| BFC = Thru Hole | Top Entry |
| EFC = Thru Hole | Top Entry |
| FGG = R/A | Top Entry |
| FJF = R/A | Top Entry |
| BFL = SMT | Top Entry |
| FFK = SMT | Top Entry |
| BHL, GFN = SMT | Top/Bottom Entry |
| GHN = SMT | Replaced by GFN |

DIMENSIONS

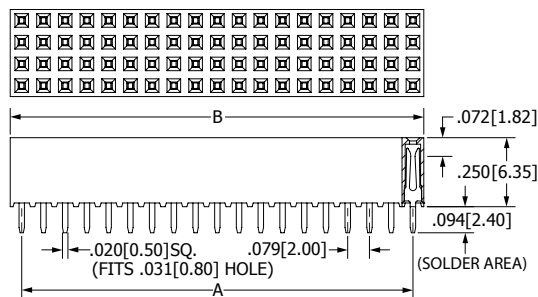
Dimensions in [] are in millimeters, all others are in inches.



**SINGLE READOUT,
 STRAIGHT TAIL SHOWN**



**DUAL READOUT,
 STRAIGHT TAIL SHOWN**



**QUAD READOUT,
 STRAIGHT TAIL SHOWN**

| NUMBER OF CONTACTS SINGLE/DUAL/ QUAD | CENTER TO CENTER LENGTH [A] | | OVERALL LENGTH [B]** | |
|--|-----------------------------|-------|----------------------|-------|
| | in | mm | in | mm |
| 02/04/NA | 0.079 | 2.00 | 0.157 | 4.00 |
| 03/06/NA | 0.157 | 4.00 | 0.236 | 6.00 |
| 04/08/NA | 0.236 | 6.00 | 0.315 | 8.00 |
| 05/10/20 | 0.315 | 8.00 | 0.394 | 10.00 |
| 06/12/24 | 0.394 | 10.00 | 0.472 | 12.00 |
| 07/14/28 | 0.472 | 12.00 | 0.551 | 14.00 |
| 08/16/32 | 0.551 | 14.00 | 0.630 | 16.00 |
| 09/18/36 | 0.630 | 16.00 | 0.709 | 18.00 |
| 10/20/40 | 0.709 | 18.00 | 0.787 | 20.00 |
| 11/22/44 | 0.787 | 20.00 | 0.866 | 22.00 |
| 12/24/48 | 0.866 | 22.00 | 0.945 | 24.00 |
| 13/26/52 | 0.945 | 24.00 | 1.024 | 26.00 |
| 14/28/54 | 1.024 | 26.00 | 1.102 | 28.00 |
| 15/30/60 | 1.102 | 28.00 | 1.181 | 30.00 |
| 16/32/64 | 1.181 | 30.00 | 1.260 | 32.00 |
| 17/34/68 | 1.260 | 32.00 | 1.339 | 34.00 |
| 18/36/72 | 1.339 | 34.00 | 1.417 | 36.00 |
| 19/38/76 | 1.417 | 36.00 | 1.496 | 38.00 |
| 20/40/80 | 1.496 | 38.00 | 1.575 | 40.00 |
| 21/42/84 | 1.575 | 40.00 | 1.654 | 42.00 |
| 22/44/88 | 1.654 | 42.00 | 1.732 | 44.00 |
| 23/46/92 | 1.732 | 44.00 | 1.811 | 46.00 |
| 24/48/96 | 1.811 | 46.00 | 1.890 | 48.00 |
| 25/50/100 | 1.890 | 48.00 | 1.969 | 50.00 |
| 26/52/104 | 1.969 | 50.00 | 2.047 | 52.00 |
| 27/54/108 | 2.047 | 52.00 | 2.126 | 54.00 |
| 28/56/112 | 2.126 | 54.00 | 2.205 | 56.00 |
| 29/58/116 | 2.205 | 56.00 | 2.283 | 58.00 |
| 30/60/120 | 2.283 | 58.00 | 2.362 | 60.00 |
| 31/62/NA | 2.362 | 60.00 | 2.441 | 62.00 |
| 32/64/NA | 2.441 | 62.00 | 2.520 | 64.00 |
| 33/66/NA | 2.520 | 64.00 | 2.598 | 66.00 |
| 34/68/NA | 2.598 | 66.00 | 2.677 | 68.00 |
| 35/70/NA | 2.677 | 68.00 | 2.756 | 70.00 |
| 36/72/NA | 2.756 | 70.00 | 2.835 | 72.00 |
| 37/74/NA | 2.835 | 72.00 | 2.913 | 74.00 |
| 38/76/NA | 2.913 | 74.00 | 2.992 | 76.00 |
| 39/78/NA | 2.992 | 76.00 | 3.071 | 78.00 |
| 40/80/NA | 3.071 | 78.00 | 3.150 | 80.00 |

** Dimension 'B' as shown are for 'FFK', Consult factory for other termination.