

LOC	DIST	REVISIONS					
EA	51	P	LTR	DESCRIPTION	DATE	DWN	APVD
		G		REVISED PER EC OAO0-0434-03	26NOV03	SM	PD

NOTE:
 1. CONNECTOR KEYING CONFORMS TO ANSI X3T9.5/84-48.
 ▲ LED IS 'ON' WHEN IN INSERTED STATE.

SPECIFICATIONS:

SWITCH LEGEND	
PI = PRIMARY IN	PTx = PRIMARY TRANSMIT
SO = SECONDARY OUT	STx = SECONDARY TRANSMIT
PO = PRIMARY OUT	PRx = PRIMARY RECEIVE
SI = SECONDARY IN	SRx = SECONDARY RECEIVE

PART NO.	FIBER TYPE
209163	62.5/125/250

INSERTION LOSS

INSERTION LOSS DATA INCLUDES TWO CONNECTED PAIRS TESTED PER FOTP-34 METHOD A2

OPERATE MODE, POWER ON

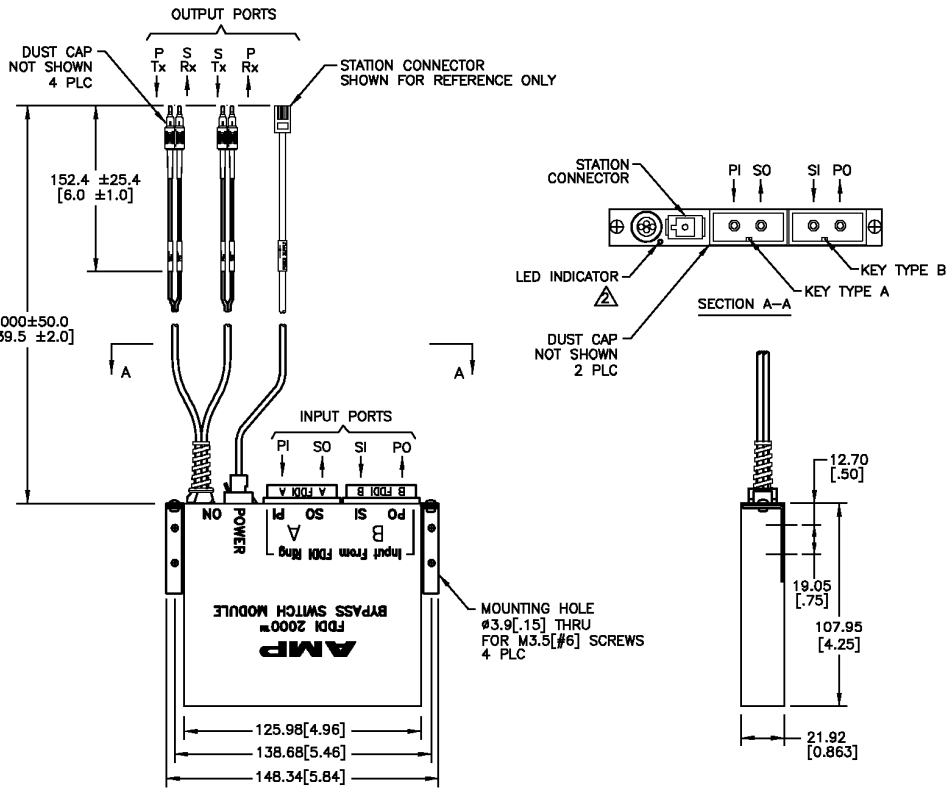
PI LINE TO PRX STATION	2.2 DB MAX
SI LINE TO SRX STATION	2.2 DB MAX
PTX STATION TO PO LINE	2.2 DB MAX
STX STATION TO SO LINE	2.2 DB MAX

BYPASS MODE, POWER OFF

PI LINE TO PO LINE	2.2 DB MAX
SI LINE TO SO LINE	2.2 DB MAX
PTX STATION TO PRX STATION	5.0 DB MAX
STX STATION TO SRX STATION	5.0 DB MAX

OPTICAL CROSSTALK	< / = -45 DB, PER FOTP-42
OPERATING WAVE LENGTH	750 TO 1450nm
TESTED WAVELENGTH	1300nm
POWER REQUIREMENTS	4.0 TO 5.5 VDC
	190 MA MAX AT 5.0 VDC W/ LED
SWITCHING SPEED	10 MILLISECONDS MAX

	KIT P/N	MODULE P/N	POWER CORD P/N	STATION CONNECTOR TYPE
OBSOLETE	209163-1	209662-3	209501-1	6 POS. MTE RECEPTACLE
OBSOLETE	209163-2	209662-3	209502-1	6 POS. SHIELDED DIN PLUG
	209163-3	209662-3	209503-1	6 POS. SHIELDED MOD PLUG
	209163-4	209662-3	209504-1	6 POS. SHIELDED MINI DIN
OBSOLETE	209163-5	209662-3	209505-1	9 POS. SUB-D
	209163-6	209662-3	209506-1	4 POS. MOD PLUG
OBSOLETE	209163-7	209662-3	209507-1	25 POS. SHIELDED HDE PLUG



THIS DRAWING IS A CONTROLLED DOCUMENT.		DWN	R. MONTANEZ	03/16/99	 Tyco Electronics Corporation Harrisburg, PA 17105-3608	
DIMENSIONS: MM [inches]		CHK	E. ANDERSON	03/16/99		
TOLERANCES UNLESS OTHERWISE SPECIFIED:		APVD	H. BAUM	03/16/99		
0 PLC ± . 1 PLC ± 1.27 2 PLC ± .13 3 PLC ± . 4 PLC ± . ANGLES ± 2'		PRODUCT SPEC				
MATERIAL		APPLICATION SPEC	NAME BYPASS SWITCH KIT FSD MIC ADAPTOR/DUPLEX SC PIGTAIL			
FINISH		WEIGHT	SIZE	CAGE CODE	DRAWING NO	RESTRICTED TO
			A3	00779	©-209163	
CUSTOMER DRAWING			SCALE	NONE	SHEET	1 OF 1
					REV	G