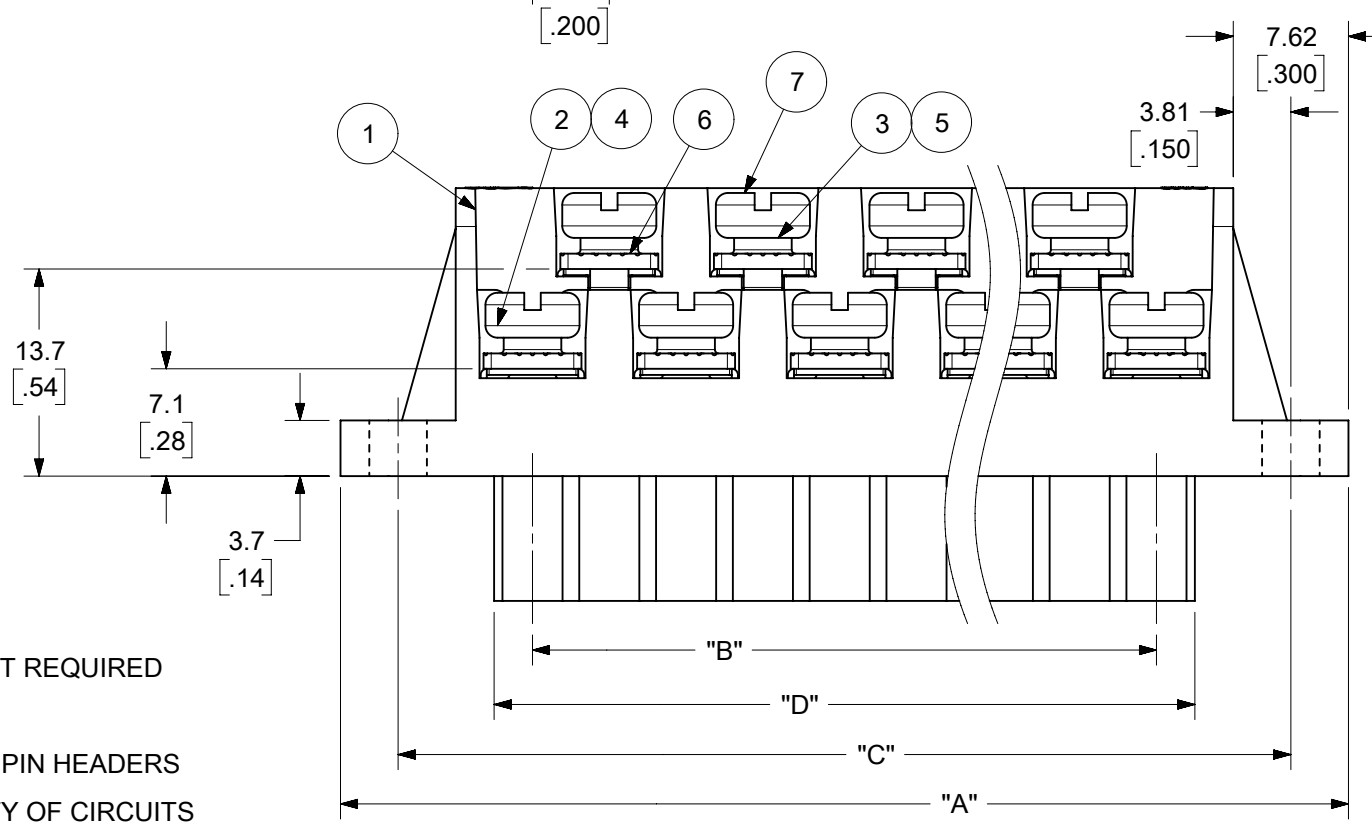


EVEN CIRCUIT, RWE ODD CIRCUIT, RWE
AUXILIARY VIEWS
SCALE 1:1



ODD CIRCUIT CONFIGURATION SHOWN

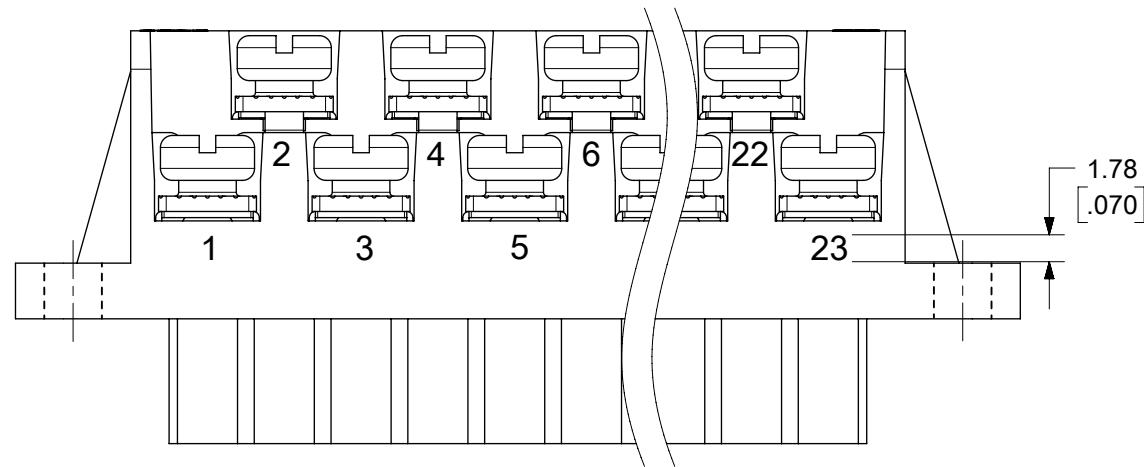
- NOTES:
1. MATERIAL: SEE TABLE
 2. FINISHES: SEE TABLE
 3. PRODUCT SPECIFICATION: NOT REQUIRED
 4. PACKAGING: NOT REQUIRED
 5. MATES WITH: MOST 5.08 [.200] PIN HEADERS
 6. "XX" REFERS TO THE QUANTITY OF CIRCUITS
 7. ROHS COMPLIANT

7	XX	XX	SCREW, M3.5 X .280	STEEL	ZINC CHROMATE
6	XX	XX	NUT, M3.5, HEX	STEEL	ZINC CHROMATE
5	XX/2	(XX-1)/2	REAR ROW TERMINAL (-G30 OPT.)	PHOS. BRONZE	SELECTIVE GOLD
4	XX/2	(XX+1)/2	FRONT ROW TERMINAL (-G30 OPT.)	PHOS. BRONZE	SELECTIVE GOLD
3	XX/2	(XX-1)/2	REAR ROW TERMINAL	PHOS. BRONZE	HOT TIN DIP
2	XX/2	(XX+1)/2	FRONT ROW TERMINAL	PHOS. BRONZE	HOT TIN DIP
1	1	1	BARRIER	THERMOPLASTIC	BLACK
ITEM	QTY. (EVEN NO. OF CIRCUITS)	QTY. (ODD NO. OF CIRCUITS)	DESCRIPTION	MATERIAL	FINISH

THIS DRAWING CONTAINS INFORMATION THAT IS PROPRIETARY TO MOLEX ELECTRONIC TECHNOLOGIES, LLC AND SHOULD NOT BE USED WITHOUT WRITTEN PERMISSION

DIMENSION UNITS	SCALE	CURRENT REV DESC: REMOVED OBSOLETE PART NUMBER AS PER PCN#511689.		
MM/INCH	2:1	<p>molex</p> <p>5.08/.200 PLUG ASSY, RWE WITH BULKHEAD PANEL MTG. ENDS (9478XX)</p>		
GENERAL TOLERANCES (UNLESS SPECIFIED)				
	MM	INCH	<p>EC NO: 745492</p> <p>DRWN: LIKITV 2023/04/19</p> <p>CHKD: GGA 2023/05/25</p> <p>APPR: GGA 2023/05/25</p>	
4 PLACES	±	±	<p>INITIAL REVISION:</p> <p>DRWN: ABENJAMINLW 2021/08/18</p> <p>APPR: PWALTZ 2004/02/03</p>	
3 PLACES	±	± 0.005	<p>DOCUMENT NUMBER</p> <p>SD-39940-001</p>	
2 PLACES	± 0.13	± 0.01	<p>DOC TYPE</p> <p>PSD</p>	
1 PLACE	± 0.3	±	<p>DOC PART</p> <p>001</p>	
0 PLACES	±	±	<p>REVISION</p> <p>E1</p>	
ANGULAR TOL	± 2.0°		<p>MATERIAL NUMBER</p> <p>SEE CHART</p>	
DRAFT WHERE APPLICABLE MUST REMAIN WITHIN DIMENSIONS		THIRD ANGLE PROJECTION	DRAWING	SHEET NUMBER
			B-SIZE	39940
			GENERAL MARKET	1 OF 2

NO. OF CIRC. "XX"	"A"		"B"		"C"		"D" ^{+0.00} _{-.25} [^{+0.000} _{-.010}]		MATERIAL NO. (STANDARD)	MATERIAL NO. (-10A OPT.)
	MM	IN	MM	IN	MM	IN	MM	IN		
03	35.6	[1.40]	10.2	[.40]	27.9	[1.10]	15.2	[.60]	399400603	399401603
04	40.6	[1.60]	15.2	[.60]	33.0	[1.30]	20.3	[.80]	399400604	399401604
05	45.7	[1.80]	20.3	[.80]	38.1	[1.50]	25.4	[1.00]	399400605	399401605
06	50.8	[2.00]	25.4	[1.00]	43.2	[1.70]	30.5	[1.20]	399400606	399401606
07	55.9	[2.20]	30.5	[1.20]	48.3	[1.90]	35.6	[1.40]	399400607	399401607
08	61.0	[2.40]	35.6	[1.40]	53.3	[2.10]	40.6	[1.60]	399400608	399401608
09	66.0	[2.60]	40.6	[1.60]	58.4	[2.30]	45.7	[1.80]	399400609	399401609
10	71.1	[2.80]	45.7	[1.80]	63.5	[2.50]	50.8	[2.00]	399400610	399401610
11	76.2	[3.00]	50.8	[2.00]	68.6	[2.70]	55.9	[2.20]	399400611	399401611
12	81.3	[3.20]	55.9	[2.20]	73.7	[2.90]	61.0	[2.40]	399400612	399401612
13	86.4	[3.40]	61.0	[2.40]	78.7	[3.10]	66.0	[2.60]	399400613	399401613
14	91.4	[3.60]	66.0	[2.60]	83.8	[3.30]	71.1	[2.80]	399400614	399401614
15	96.5	[3.80]	71.1	[2.80]	88.9	[3.50]	76.2	[3.00]	399400615	399401615
16	101.6	[4.00]	76.2	[3.00]	94.0	[3.70]	81.3	[3.20]	399400616	399401616
17	106.7	[4.20]	81.3	[3.20]	99.1	[3.90]	86.4	[3.40]	399400617	399401617
18	111.8	[4.40]	86.4	[3.40]	104.1	[4.10]	91.4	[3.60]	399400618	399401618
19	116.8	[4.60]	91.4	[3.60]	109.2	[4.30]	96.5	[3.80]	399400619	399401619
20	121.9	[4.80]	96.5	[3.80]	114.3	[4.50]	101.6	[4.00]	399400620	399401620
21	127.0	[5.00]	101.6	[4.00]	119.4	[4.70]	106.7	[4.20]	399400621	399401621
22	132.1	[5.20]	106.7	[4.20]	124.5	[4.90]	111.8	[4.40]	399400622	399401622
23	137.2	[5.40]	111.8	[4.40]	129.5	[5.10]	116.8	[4.60]	399400623	399401623
24	142.2	[5.60]	116.8	[4.60]	134.6	[5.30]	121.9	[4.80]	399400624	399401624



**OPTIONAL
10A IMPRINTING**
(ODD CIRCUIT CONFIGURATION SHOWN)

THIS DRAWING CONTAINS INFORMATION THAT IS PROPRIETARY TO MOLEX ELECTRONIC TECHNOLOGIES, LLC AND SHOULD NOT BE USED WITHOUT WRITTEN PERMISSION																	
DIMENSION UNITS MM/INCH		SCALE 2:1		CURRENT REV DESC: REMOVED OBSOLETE PART NUMBER AS PER PCN#511689.													
GENERAL TOLERANCES (UNLESS SPECIFIED)				EC NO: 745492													
				DRWN: LIKITV 2023/04/19				5.08/.200 PLUG ASSY, RWE WITH BULKHEAD PANEL MTG. ENDS (9478XX)									
				CHKD: GGA 2023/05/25													
				APPR: GGA 2023/05/25				PRODUCT CUSTOMER DRAWING									
				INITIAL REVISION:				DOCUMENT NUMBER									
				DRWN: ABENJAMINLW 2021/08/18				SD-39940-001		DOC TYPE		DOC PART					
				APPR: PWALTZ 2004/02/03				PSD		001		E1					
				ANGULAR TOL ± 2.0°		THIRD ANGLE PROJECTION		DRAWING		SERIES		MATERIAL NUMBER		CUSTOMER		SHEET NUMBER	
				DRAFT WHERE APPLICABLE MUST REMAIN WITHIN DIMENSIONS				B-SIZE		39940		SEE CHART		GENERAL MARKET		2 OF 2	