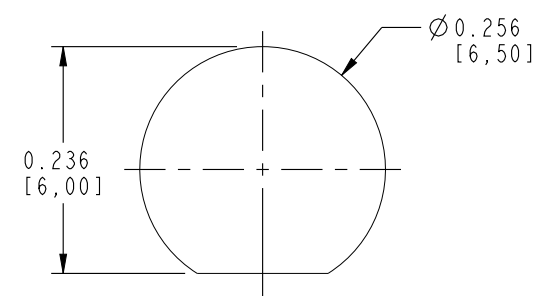


NOTES:

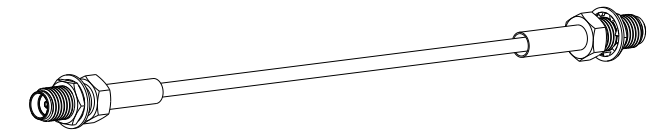
1. MATERIALS AND FINISHES:
SMA STR BHD JACK - BRASS, GOLD PLATING
CABLE - RG 316
2. ELECTRICAL:
A. IMPEDANCE: 50 OHM
3. PACKAGING:
A. QUANTITY: SINGLE PACK
B. MARKING: BAG TO BE MARKED
"AMPHENOL RF, 135113-01-XX.XX AND DATE CODE"

THIRD ANGLE PROJ.

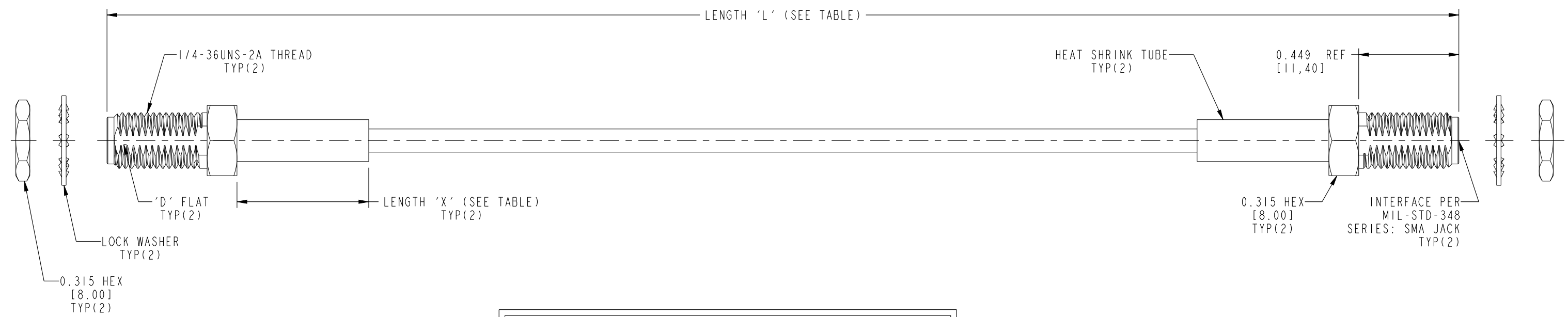
REVISIONS				
REV	DESCRIPTION	DATE	ECO	APPR
--	RELEASE TO MFG.	--	--	--
B	COD SHEET ADDED	28-Jan-19	10386	VR



RECOMMENDED MOUNTING HOLE DIMENSIONS



SCALE 0.700



LENGTH TABLE		
PART NUMBER (IMPERIAL)	LENGTH 'L' IN INCHES [METERS]	LENGTH 'X' IN INCHES [METERS] MIN
135113-01-06.00	6.00 [0.152]	0.75 [0.019]
135113-01-12.00	12.00 [0.305]	
135113-01-18.00	18.00 [0.457]	
135113-01-24.00	24.00 [0.610]	1.50 [0.038]
135113-01-36.00	36.00 [0.914]	

TOLERANCE TABLE	
LENGTH IN INCHES/FT [METERS]	TOLERANCE
0" - 23.90" [0 - 0.607]	±0.25" [0.006]
24.00" - 59.00" [0.610 - 1.499]	±0.50" [0.013]
5.0' - 24.9' [1.524 - 7.617]	±2.5%
25.0' & UP [7.620 & UP]	±5.0%

DESIGN REQUIREMENTS:

FREQUENCY: ____ TO ____ GHz CONTINUITY

VSWR: ____ I MAX. HI-POT: 500 VRMS

INS. LOSS: ____ dB MAX. OTHER

CUSTOMER OUTLINE DRAWING
ALL OTHER SHEETS ARE FOR INTERNAL USE ONLY

UNLESS OTHERWISE SPECIFIED, DIMENSIONS ARE IN INCHES AND TOLERANCES ARE: 2 PLACE DECIMAL 3 PLACE DECIMAL ANGLES ±.015 (0,381 mm) ±.005 (0,127 mm) ± 1°	MATERIAL	DRAWN	DATE	TITLE SMA STR BHD JACK TO SMA STR BHD JACK USING RG 316 CABLE VARIOUS LENGTH SCALE: 2.3:1.0 SHEET 2 OF 2		Amphenol RF www.amphenolrf.com	
	SEE NOTES	VIJAY N M	18-Jan-19				
NOTICE - These drawings, specifications, or other data (1) are, and remain the property of Amphenol corp. (2) must be returned upon request; and (3) are confidential and not to be disclosed to any person other than those to whom they are given by Amphenol Corp. the furnishing of these drawings, specifications, or other data by Amphenol Corp., or to any other person to anyone for any purpose is not to be regarded by implication or otherwise in any manner licensing, granting rights to permitting such holder or any other person to manufacture, use or sell any product, process or design, patented or otherwise, that may in any way be related to or disclosed by said drawings, specifications, or other data.	REFERENCE	ENGINEER	DATE	DRAWING NO. 135113-01-XX-XX ITEM NO. 135113-01-XX-XX		PART NO. 135113-01-XX-XX	
	EAR #	GOPI M	28-Mar-12				
	CONFIGURATION LEVEL: In Work	APPROVED	DATE		DWG SIZE	REV	
FINISH	K.CAPOZZI	28-Jan-19		B	B		