

# ADAM-5013 ADAM-5017 ADAM-5017P

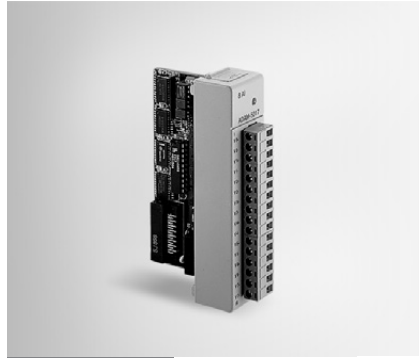
## 3-ch RTD Input Module

## 8-ch Analog Input Module

## 8-ch Analog Input Module with Independent Input Range



ADAM-5013



ADAM-5017



ADAM-5017P



### Specifications

#### General

- **Certification** CE
- **Connectors** 1 x Plug-in screw terminal (# 14 ~ 22 AWG)
- **Enclosure** ABS+PC
- **Power Consumption** 1.1 W (max.)

#### RTD Input

- **Accuracy**  $\pm 0.1\%$  or better
- **Bandwidth** 13.1 Hz @ 50 Hz  
15.72 Hz @ 60 Hz
- **Channels** 3
- **CMR @ 50/60 Hz** 150 dB
- **Input Connections** 2, 3 or 4 wire
- **Input Impedance** 2 M $\Omega$
- **Input Type** PT100 or Ni RTD
- **NMR @ 50/60 Hz** 100 dB
- **Resolution** 16-bit
- **RTD Types and Temperature Ranges**

IEC RTD 100 ohms			
Pt	-100°C	to	+100°C
a=			0.00385
Pt	0°C	to	+100°C
a=			0.00385
Pt	0°C	to	+200°C
a=			0.00385
Pt	0°C	to	+600°C
a=			0.00385
JIS RTD 100 ohms			
Pt	-100°C	to	+100°C
a=			0.00392
Pt	0°C	to	+100°C
a=			0.00392
Pt	0°C	to	+200°C
a=			0.00392
Pt	0°C	to	+600°C
a=			0.00392
Ni RTD			
Ni	-80°C	to	+100°C
Ni	0°C	to	+100°C
- **Sampling Rate** 10 samples/sec. (total)
- **Span Drift**  $\pm 0.01^\circ\text{C}/^\circ\text{C}$
- **Zero Drift**  $\pm 0.015^\circ\text{C}/^\circ\text{C}$

#### Protection

- **Isolation Voltage** 3000 V<sub>DC</sub>

### Ordering Information

- **ADAM-5013** 3-ch RTD Input Module

### Specifications

#### General

- **Certification** CE, FM
- **Connectors** 1 x Plug-in screw terminal (# 14 ~ 22 AWG)
- **Enclosure** ABS+PC
- **Power Consumption** 1.25 W (max.)

#### Analog Input

- **Accuracy** Voltage mode:  $\pm 0.1\%$  or better  
Current mode:  $\pm 0.2\%$  or better
- **Bandwidth** 13.1 Hz @ 50 Hz  
15.72 Hz @ 60 Hz
- **Channels** 8 differential
- **CMR @ 50/60 Hz** 92 dB min.
- **Input Impedance** Voltage: 2 M $\Omega$   
Current: 120 $\Omega$  (Build-in 120 $\Omega$  resistor for Current input)
- **Input Range**  $\pm 150$  mV,  $\pm 500$  mV,  $\pm 1$  V,  $\pm 5$  V,  $\pm 10$  V;  $\pm 20$  mA
- **Resolution** 16-bit
- **Sampling Rate** 10 samples/sec. (total)
- **Span Drift**  $\pm 25$  PPM/ $^\circ\text{C}$
- **Zero Drift**  $\pm 6$   $\mu\text{V}/^\circ\text{C}$

#### Protection

- **Isolation Voltage** 3,000 V<sub>DC</sub>
- **Fault and Overvoltage Protection** Withstands overvoltage up to  $\pm 35$  V

**Note:** The voltage difference between any two pins must not exceed  $\pm 15$  V

### Ordering Information

- **ADAM-5017** 8-ch Analog Input Module

### Specifications

#### General

- **Certification** CE, FCC Class A
- **Connectors** 1 x Plug-in terminal block (#14 ~ 22 AWG)
- **Enclosure** ABS+PC
- **Power Consumption** 1.25 W (max.)

#### Analog Input

- **Accuracy** Voltage mode:  $\pm 0.1\%$  or better  
Current mode:  $\pm 0.2\%$  or better
- **Channels** 8 (differential, each channel can be configured with different range)
- **CMR @ 50/60 Hz** 92 dB min.
- **Input Impedance** Voltage: 800K  $\Omega$   
Current: 120  $\Omega$  (Build-in 120  $\Omega$  resistor for Current Input) for Current Input)
- **Input Range** 0 ~ 150 mV, 0 ~ 500 mV, 0 ~ 1 V, 0 ~ 5 V, 0 ~ 10 V, 0 ~ 15 V,  $\pm 150$  mV,  $\pm 500$  mV,  $\pm 1$  V,  $\pm 5$  V,  $\pm 10$  V,  $\pm 15$  V,  $\pm 20$  mA, 4 ~ 20 mA
- **Resolution** 16-bit
- **Sampling Rate** 10 samples/sec. (total)
- **Span Drift**  $\pm 25$  ppm/ $^\circ\text{C}$
- **Zero Drift**  $\pm 6$   $\mu\text{V}/^\circ\text{C}$
- **High Common Mode** 200 V<sub>DC</sub>

#### Protection

- **Over Voltage Protection**
- **Built-in TVS/ESD Protection**
- **Isolation Voltage** 3,000 V<sub>DC</sub>

**Note:** Does not support ADAM-5510KW series

### Ordering Information

- **ADAM-5017P** 8-ch Analog Input Module w/ Ind. Input Range