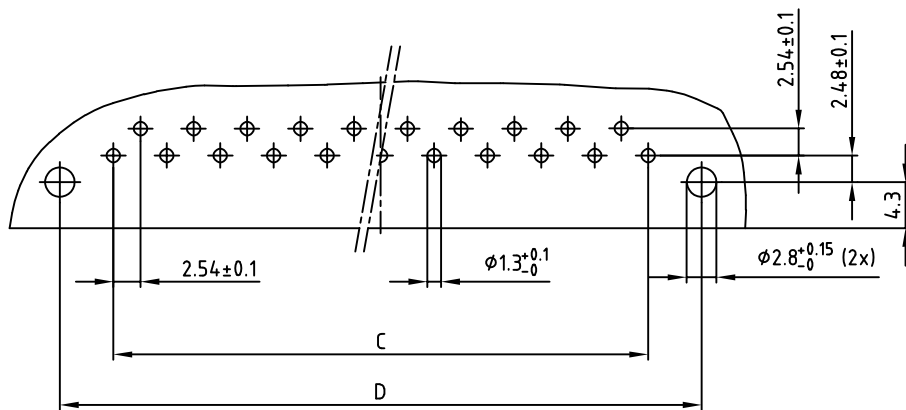


Polzahl No. of pos.	A ±0.2	B ±0.1 (b)	C ±0.1	D ±0.1	Art.-Nr. Part-No
13	45.6	12x2.5=30	12x2.54=30.48	40	101A10089X
21	65.6	20x2.5=50	20x2.54=50.80	60	101A10109X
31	90.6	30x2.5=75	30x2.54=76.20	85	101A10129X

NOTES:

- INSULATOR: PC GF UL 94 V-1, GREY
- CONTACTS: COPPER ALLOY  
PLATING: GOLD OVER NICKEL  
50 MATING CYCLES
- CONNECTOR IS PART MARKED: PART-NÖ CONEC ABC

P.C.B. HOLE DRILLINGS  
(P.C.B. TOP SIDE)



THIS DRAWING MAY NOT BE COPIED OR REPRODUCED IN ANY WAY, AND MAY NOT BE PASSED ON TO A THIRD PARTY WITHOUT WRITTEN PERMISSION. OWNERSHIP AND COPYRIGHT OF CONEC GmbH DO NOT ALTER CAD DRAWING BY HAND	tolerance		dim. in mm		scale: 2:1	
	material: SEE NOTES		title:		MALE CONNECTOR	
	2013 date		name		13pos.-31pos. / 2.54mm	
	drawn 27.06.		Henneboel		with angled solder pins	
	appd. 27.06.		Koch		dwg no:	
norm DIN 41617		1 x c Ä23-0990 26.06.2023 JLE d-old		10K2A028		
2 x b Ä5359 25.09.2014 K.H.		a Original		part no: SEE TABLE		
rev. description date name		CONEC®		DIN-A 3 sh: 1/1		

RoHS compliant